

# LAND FOR SALE



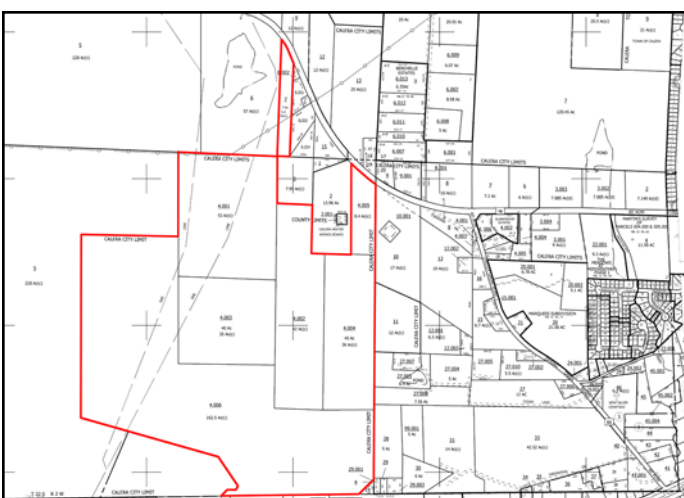
Commercial Real Estate Specialists

Southpace Properties, Inc.

300 N. R. Arrington Blvd, Ste. 900, Birmingham, AL  
205.326.2222 | www.southpace.com

## HIGHWAY 16 AT HIGHWAY 63

Calera, Alabama 35040



### Total Size

- Site size: 342± acres

### Property Features

- All utilities at or near site
- Approximately 2 miles from I-65
- Zoned M-R (municipal reserve)

### Asking Price

- **\$7,518/acre**

For more information contact:

Rhett Loveman, CCIM | [rloveman@southpace.com](mailto:rloveman@southpace.com) or  
Neill Fox, CCIM | [nfox@southpace.com](mailto:nfox@southpace.com) | 205.326.2222