



4487 Mead Road
Macon, Bibb County, Georgia 31206

SALE



- Located at the intersection of Guy Paine Road and Mead Road
- 1± Acre Corner Lot
- 210'± Frontage on Guy Paine Road; 210'± frontage on Mead Road
- Formerly Georgia Timberlands Corporate Office; demolished 2008.
- All public utilities available to the site.
- Zoned M-1, Light Industrial
- Property Tax Bill: \$285.15
- Neighbors: Premier Transportation, Graphic Packaging, Gilmer Warehouse, Chemtrade Logistics, California Cereal, Thompson Lift Trucks, Beverage South Macon, Crown Candy, United Steelworkers

SALES PRICE: \$65,000

CBCMACON.COM

ART BARRY III, SIOR
478.746.8171 Office • 478.731.8000 Cell
abarry@cbcworldwide.com



**COLDWELL BANKER
COMMERCIAL**
EBERHARDT & BARRY

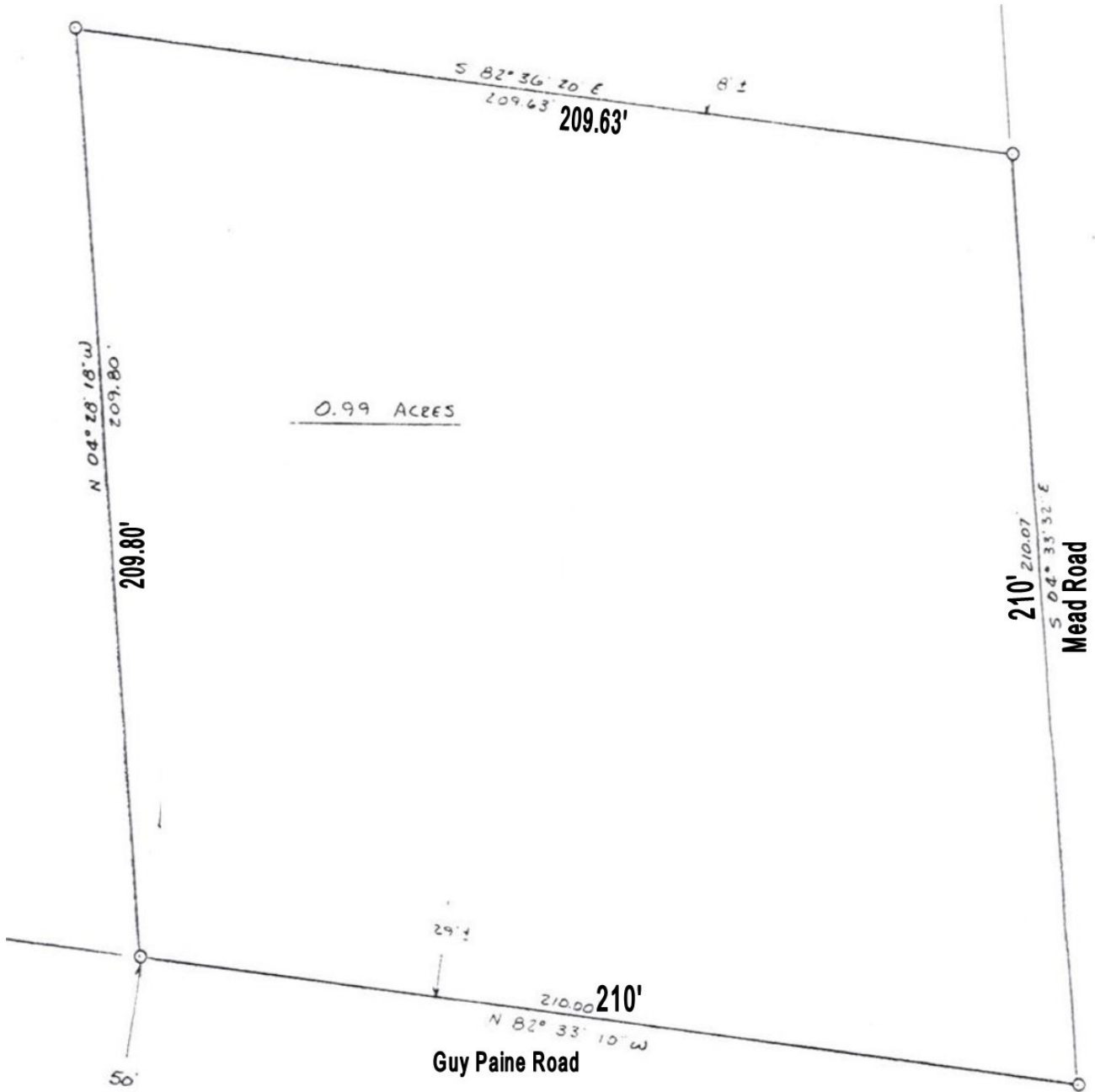
CBCWORLDWIDE.COM

Revised 1/13/22



SURVEY

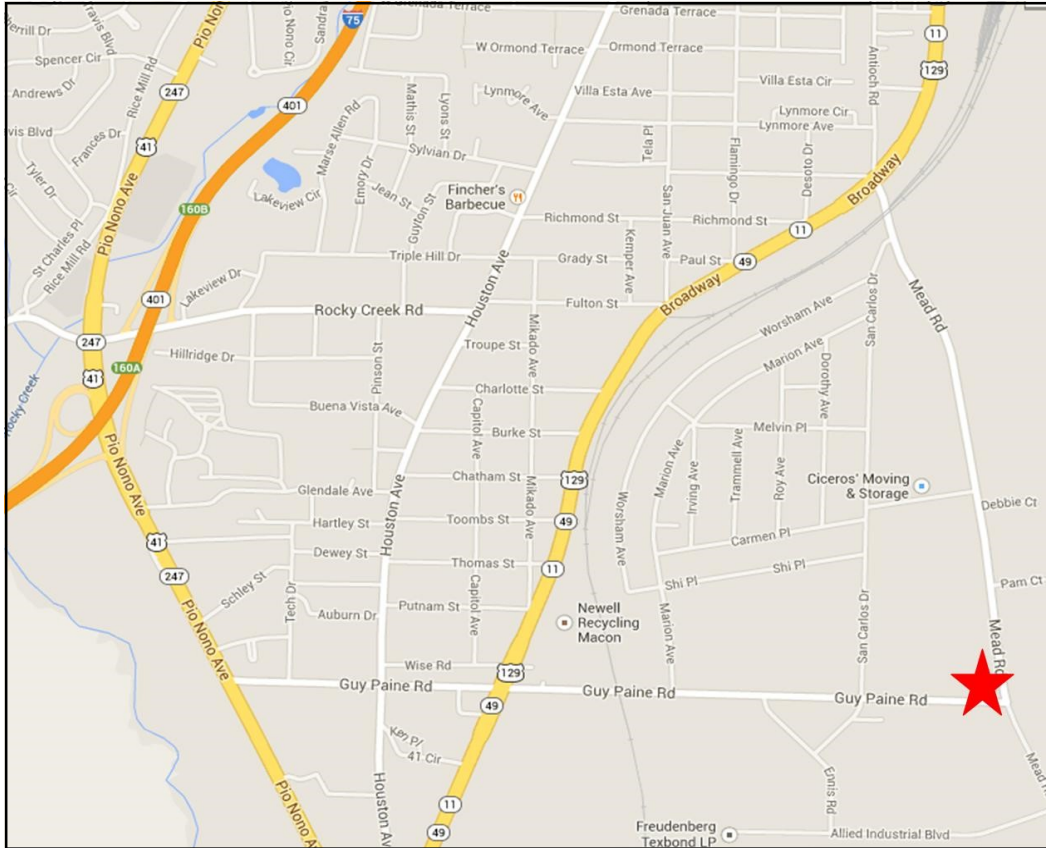
4487 Mead Road
Macon, Bibb County, Georgia 31206





LOCATION MAP / SITE AERIAL

4487 Mead Road
Macon, Bibb County, Georgia 31206





DEMOGRAPHICS - BIBB COUNTY

4487 Mead Road
Macon, Bibb County, Georgia 31206

KEY FACTS

156,935

Population



Average Household Size

37.4

Median Age

\$43,016

Median Household Income

EDUCATION

13%

No High School Diploma



30%

High School Graduate



30%

Some College



27%

Bachelor's/Grad/Prof Degree

BUSINESS



6,469

Total Businesses



87,677

Total Employees

EMPLOYMENT



67%

White Collar



19%

Blue Collar



14%

Services

7.5%

Unemployment Rate

INCOME



\$43,016

Median Household Income



\$25,623

Per Capita Income



\$46,997

Median Net Worth

Households By Income

The largest group: <\$15,000 (17.7%)

The smallest group: \$200,000+ (4.1%)

Indicator ▲	Value	Diff
<\$15,000	17.7%	+7.2%
\$15,000 - \$24,999	10.7%	+1.9%
\$25,000 - \$34,999	13.0%	+4.1%
\$35,000 - \$49,999	14.0%	+1.7%
\$50,000 - \$74,999	14.6%	-3.6%
\$75,000 - \$99,999	10.8%	-1.9%
\$100,000 - \$149,999	10.8%	-4.1%
\$150,000 - \$199,999	4.2%	-2.1%
\$200,000+	4.1%	-3.2%

Bars show deviation from Georgia