



Alabama**LandAgent.com**

Land • Farms • Lake Property

Chad Camp  
205-478-4974



878+/- ACRES

*Odenville, AL - GPS 33.658952, -86.464639*

*878+/- Acres Development Tract with 2 access points. 1st access point on Sanie Road and the 2nd access point in Creekside Cove Subdivision. Miles of trails to explore the valley, ridges and crossing gorgeous rock bed creeks. Thousands of feet on Little Black Creek. Ponds on the Property Too!. Several potential large lake sites and would make a great residential planned community. St. Clair County doesn't have a golf community and lays great with gorgeous natural features for one. This is prime property with a prime opportunity for development. Property is east of Margaret Alabama a fast growing community and Northeast of Moody. Great access to I-59 or I-20,*

*See Map below.*

**Chad Camp**  
**(205) 478-4974**



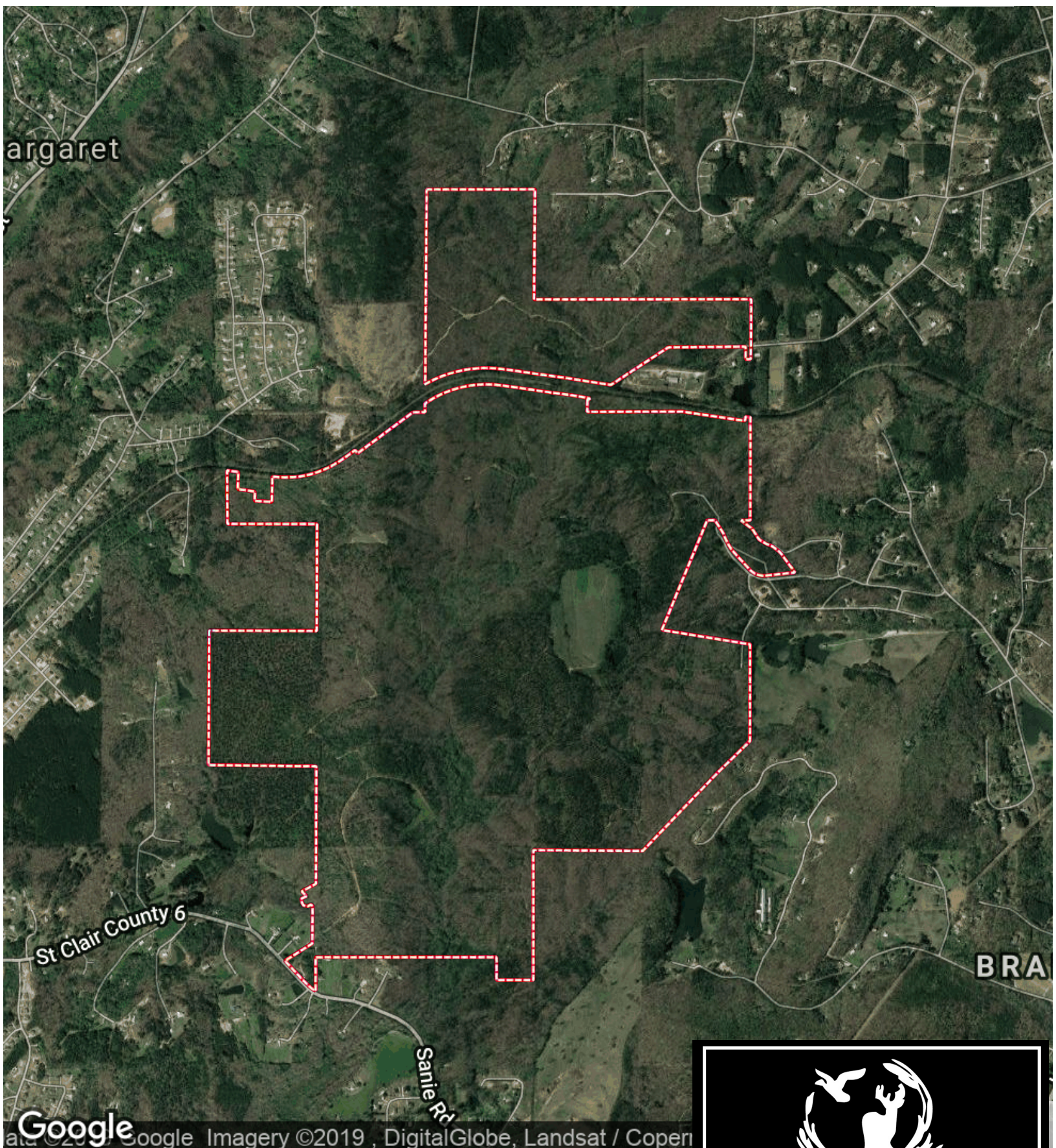
Alabama**LandAgent.com**

Land • Farms • Lake Property





878+/- Acres - Odenville Alabama  
Alabama, AC +/-



Google Imagery ©2019, DigitalGlobe, Landsat / Copernicus

 Boundary



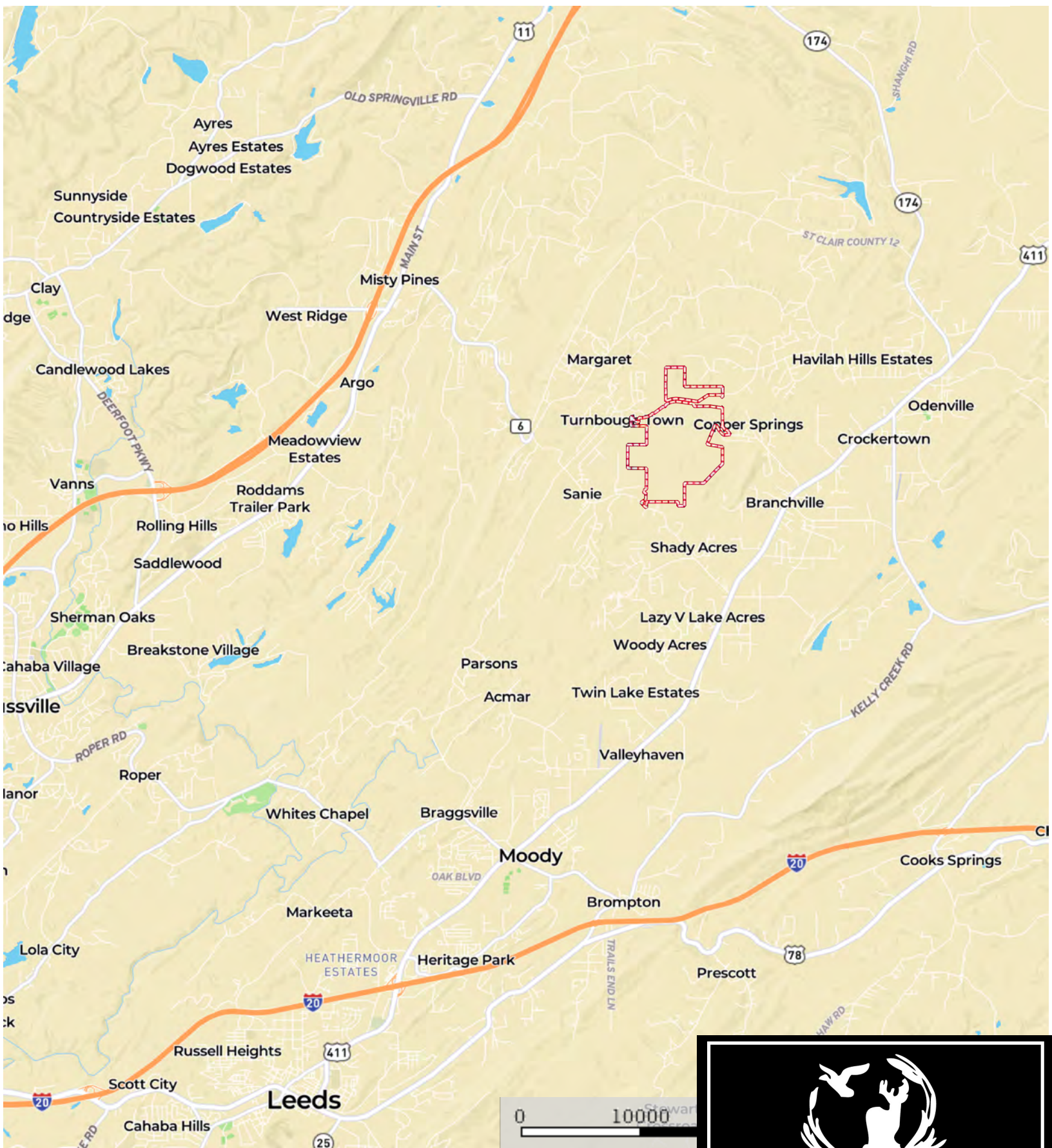
**AlabamaLandAgent.com**  
Land • Farms • Lake Property

Chad Camp  
205-478-4974



# 878+/- Acres - Odenville Alabama

Alabama, AC +/-



 Boundary



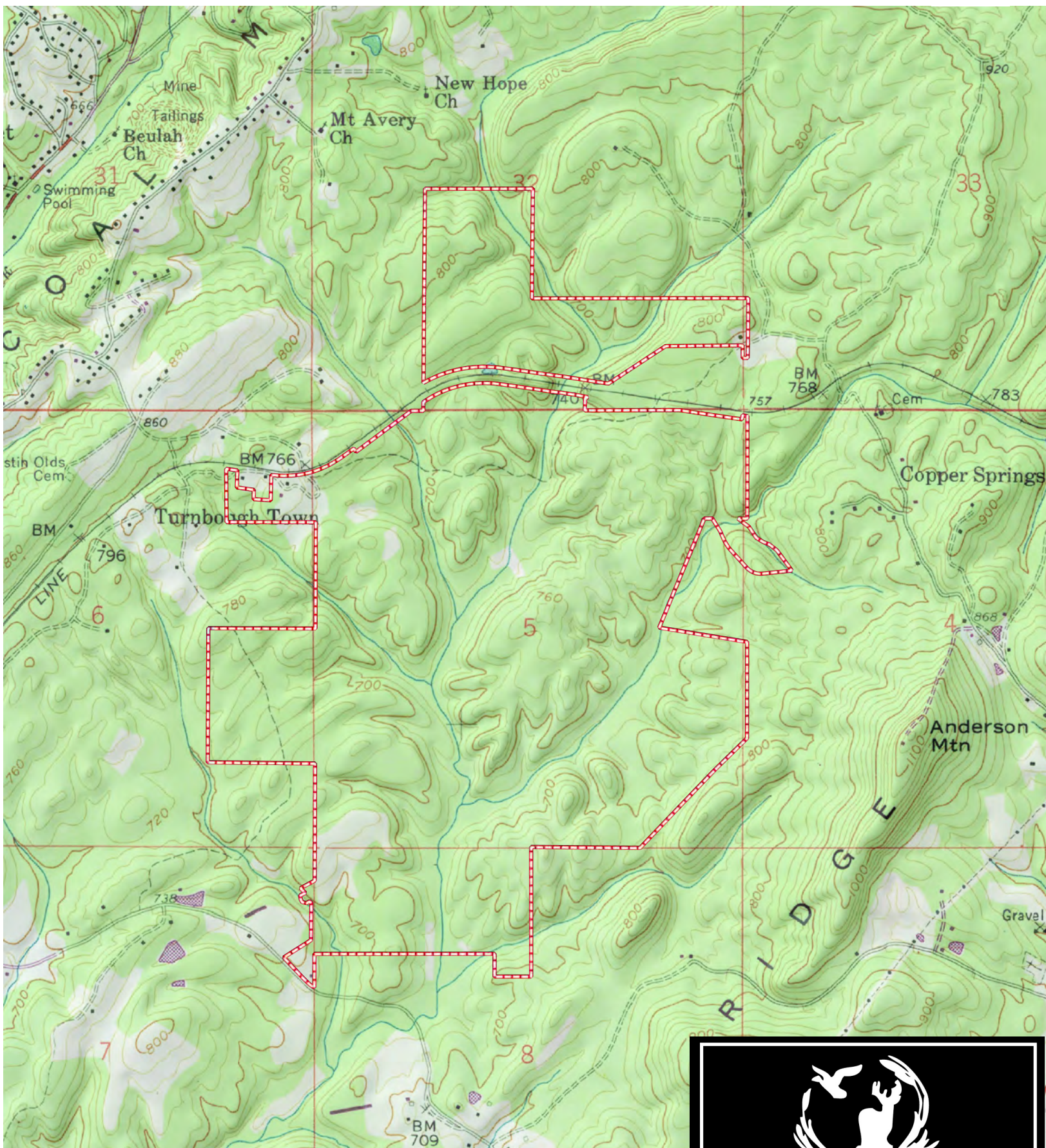
**AlabamaLandAgent.com**  
Land • Farms • Lake Property

Chad Camp  
205-478-4974



# 878+/- Acres - Odenville Alabama

Alabama, AC +/-



 Boundary



**AlabamaLandAgent.com**  
Land • Farms • Lake Property

Chad Camp  
205-478-4974