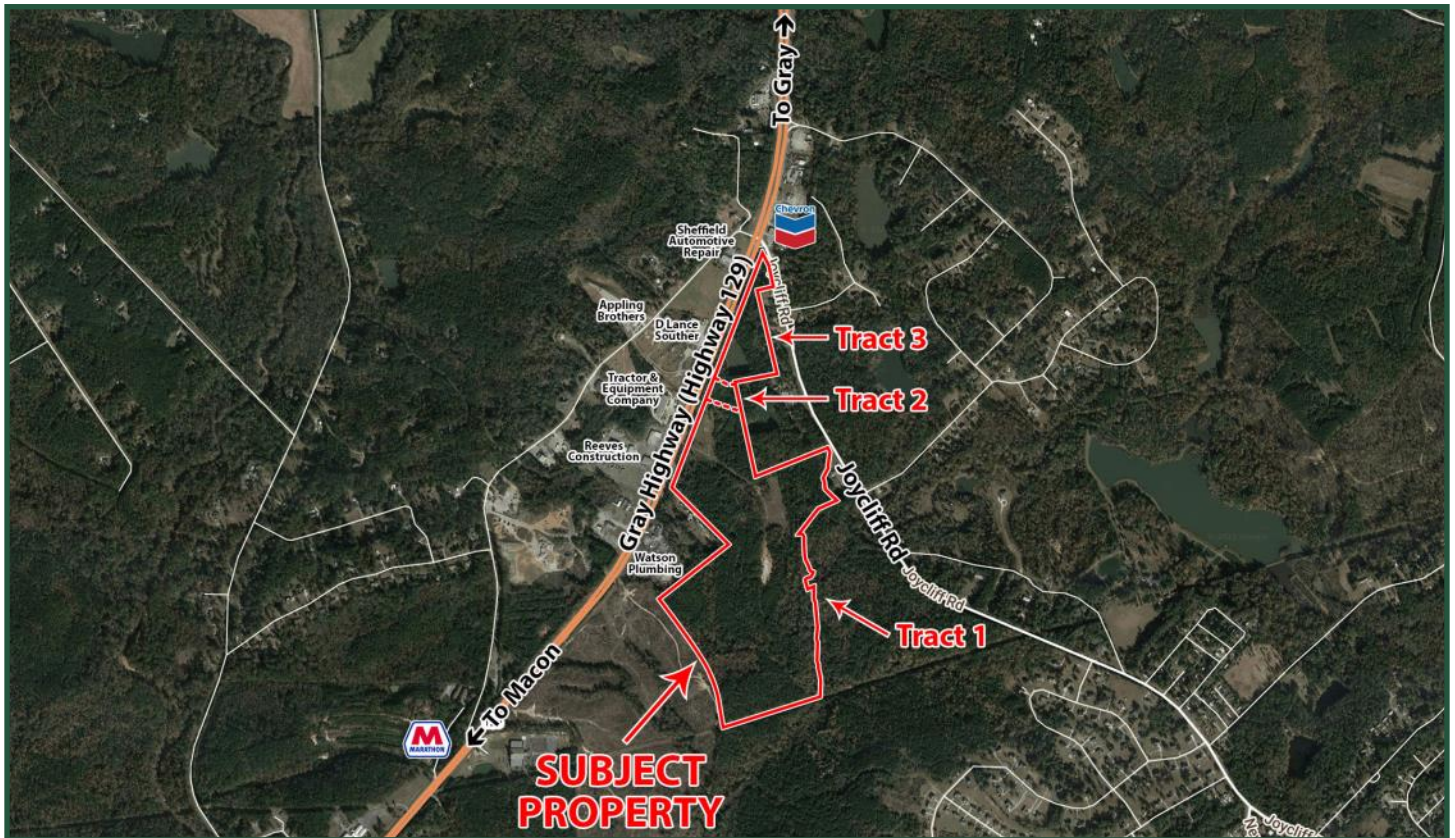


96.36 Acres For Sale

Gray Highway at Joycliff Road

Macon, GA 31211



Lot Size: 96.36 AC
Tract 1: 86.3 AC
Tract 2: 2.02 AC
Tract 3: 8.04 AC

Frontage: 2,720' - Gray Highway (Hwy 129)
390' - Joycliff Road

Utilities: County water & septic

Taxes: \$8,622.54 (2021 est.)

Zoning: C-2, a portion of Tract 3 is also zoned R-1

Traffic: 16,000 VPD

Topography: Rolling

Notes: Property is located 1/3 mile from Bibb County. Property has good visibility.

Neighbors: Watson Plumbing, Appling Brothers, Reeves Construction, Tractor & Equipment Company, Sheffield Auto Repair, Ingles, ACE Hardware, and Tractor Supply (Under Contract).

Reduced Price: \$9,000 Per Acre
~~Sale Price: \$10,000 Per Acre~~

**FOR MORE
INFORMATION
CONTACT**

Trip Wilhoit, CCIM, ALC
478-746-9421 (O)
478-960-4080 (C)
trip@fickling.com

Patty Burns, CCIM, ALC
478-746-9421 (O)
478-951-5100 (C)
patty@fickling.com

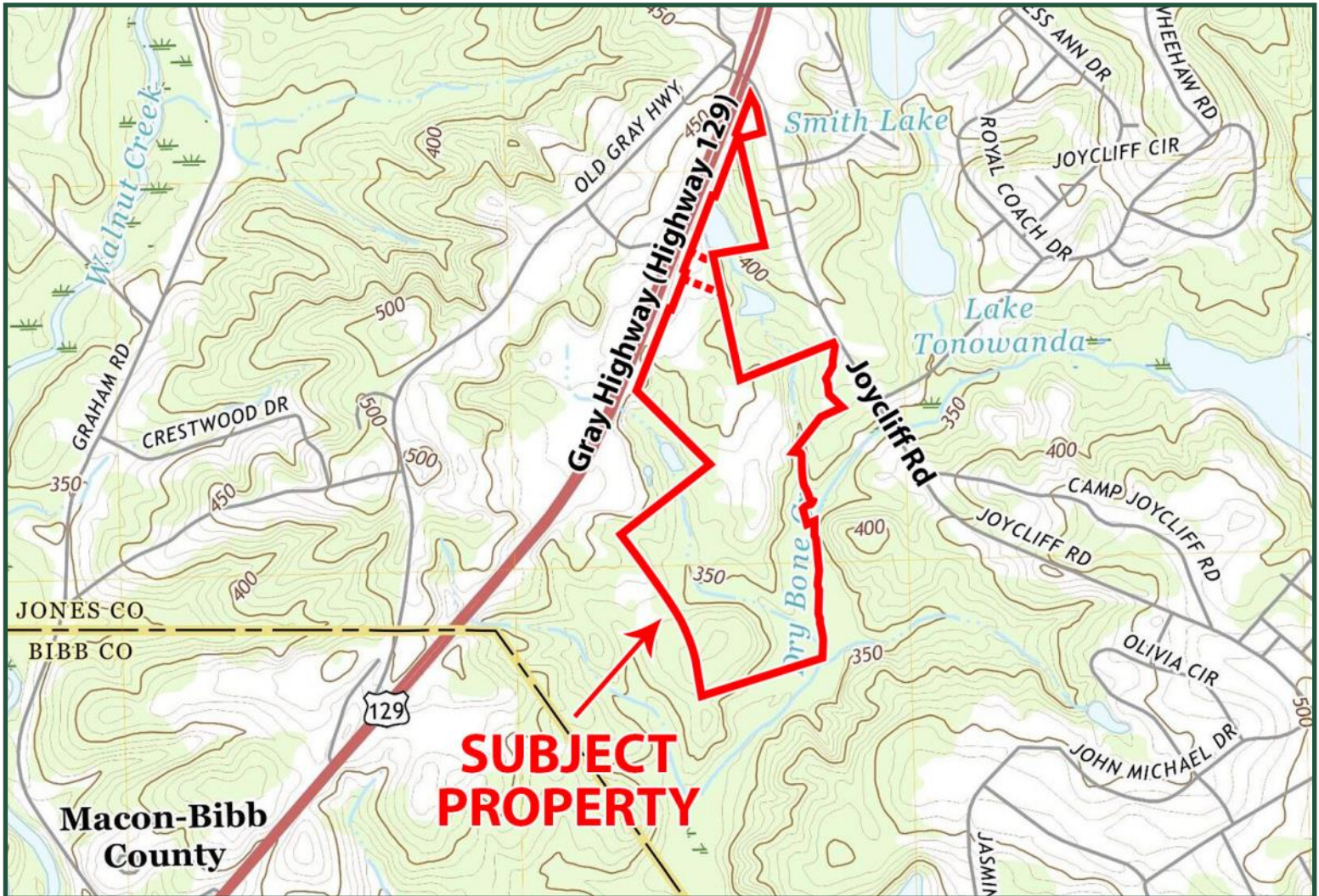
commercial.fickling.com | georgiacommercialrealestate.net

577 Mulberry St, Suite 1100 * P.O. Box 310 * Macon, GA 31202 | Phone (478) 746-9421 | Fax (478) 742-2015

This information is from resources deemed to be reliable, no warranties or guarantees for accuracy are made by Fickling and Company

96.36 Acres For Sale
 Gray Highway at Joycliff Road
 Macon, GA 31211

TOPOGRAPHY & DEMOGRAPHICS



2021 Demographics	3 mile	5 mile	10 mile
Population	16,735	38,677	142,475
Avg. Household Income	\$47,068	\$53,379	\$62,805
Median Age	37.9	38.0	36.7

**FOR MORE
 INFORMATION
 CONTACT**

Trip Wilhoit, CCIM, ALC
 478-746-9421 (O)
 478-960-4080 (C)
trip@fickling.com

Patty Burns, CCIM, ALC
 478-746-9421 (O)
 478-951-5100 (C)
patty@fickling.com

commercial.fickling.com | georgiacommercialrealestate.net

577 Mulberry St, Suite 1100 * P.O. Box 310 * Macon, GA 31202 | Phone (478) 746-9421 | Fax (478) 742-2015

This information is from resources deemed to be reliable, no warranties or guarantees for accuracy are made by Fickling and Company