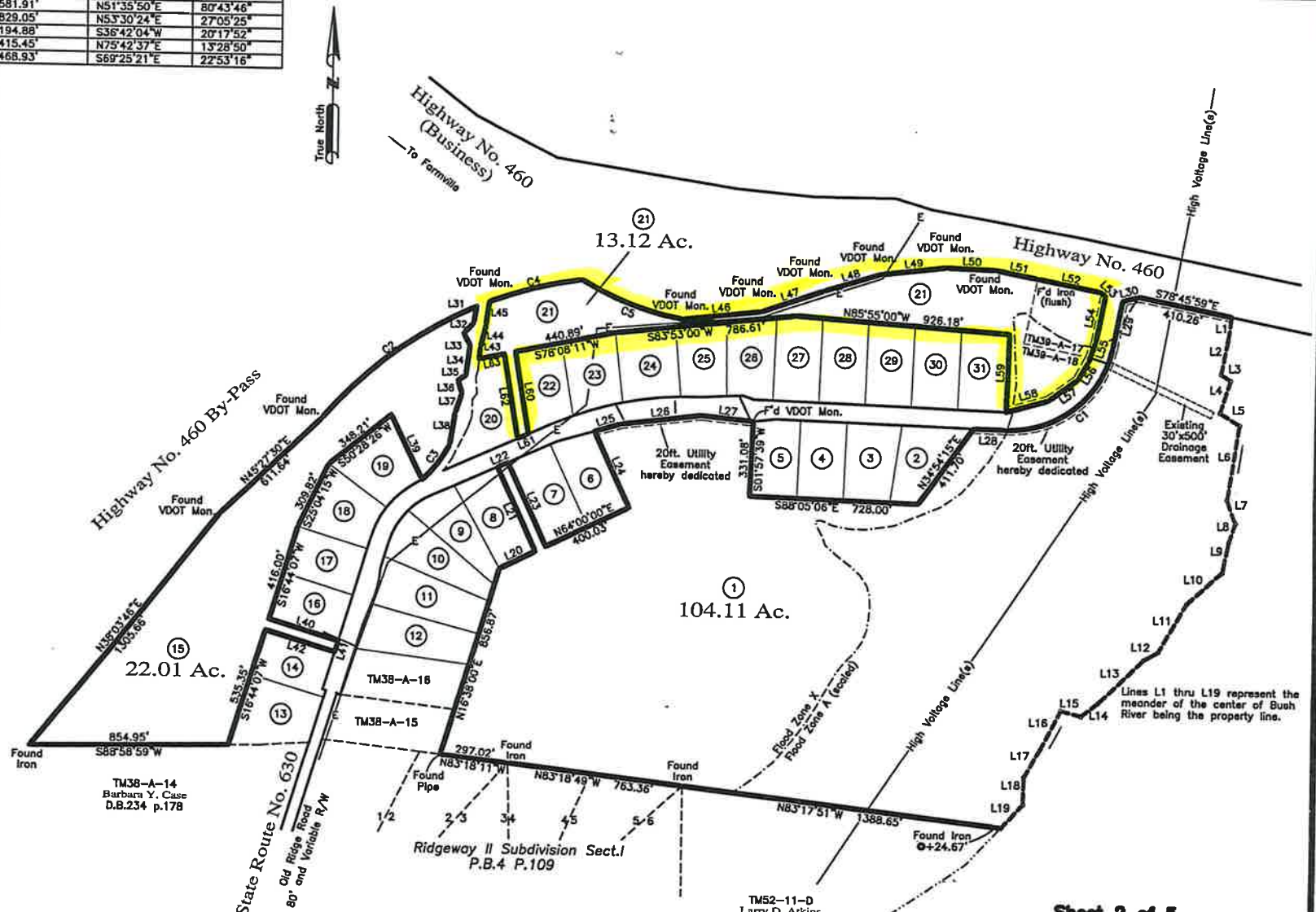


CURVE	RADIUS	ARC LENGTH	CHORD LENGTH	CHORD BEARING	DELTA ANGLE
C1	449.25'	632.99'	581.91'	N51°35'50"E	80°43'46"
C2	1769.87'	836.82'	829.05'	N53°30'24"E	27°05'25"
C3	552.98'	195.90'	194.88'	S36°42'04"W	20°17'52"
C4	1769.87'	418.41'	415.45'	N75°42'37"E	13°28'50"
C5	1181.74'	472.06'	468.93'	S69°25'21"E	22°53'16"

LINE	BEARING	DISTANCE
L1	S08°16'46"W	105.38'
L2	S10°22'28"W	146.40'
L3	S54°53'24"E	49.06'
L4	S17°02'06"W	146.96'
L5	S58°10'49"E	100.40'
L6	S08°28'58"W	333.97'
L7	S19°37'50"E	109.36'
L8	S18°09'32"W	89.92'
L9	S12°02'23"W	128.85'
L10	S47°45'47"W	206.41'
L11	S29°24'39"W	243.81'
L12	S59°34'55"W	69.95'
L13	S44°54'18"W	275.06'
L14	S50°52'36"W	92.49'
L15	N75°26'14"W	90.00'
L16	S26°30'27"W	193.12'
L17	S28°26'19"W	142.97'
L18	S01°32'21"W	119.62'
L19	S41°59'47"W	137.96'
L20	N64°00'00"E	171.83'
L21	N24°29'15"W	404.75'
L22	N65°30'45"E	50.00'
L23	S24°29'15"E	403.43'
L24	N24°29'15"W	369.62'
L25	N73°28'00"E	118.42'
L26	N83°03'30"E	352.16'
L27	S84°13'54"E	225.90'
L28	S88°02'21"E	136.02'
L29	N11°14'01"E	209.69'
L30	N75°07'47"E	71.05'
L31	S10°34'46"W	71.05'
L32	S42°42'54"W	61.03'
L33	S27°16'12"E	61.03'
L34	S07°43'22"W	130.00'
L35	S57°55'00"W	39.05'
L36	S16°43'17"E	60.42'
L37	S18°15'20"W	88.42'
L38	S09°05'22"W	143.26'
L39	N25°52'49"W	316.00'
L40	S73°15'53"E	316.00'
L41	S16°44'07"W	50.00'
L42	N73°15'53"W	316.00'
L43	N04°51'36"E	50.72'
L44	N13°25'58"E	100.50'
L45	N07°43'22"E	100.33'
L46	N83°53'00"E	339.21'
L47	N70°51'22"E	289.19'
L48	N72°43'37"E	260.52'
L49	N83°25'11"E	282.99'
L50	S87°52'54"E	209.48'
L51	S78°46'00"E	182.85'
L52	S78°38'28"E	280.30'
L53	S46°40'16"E	23.26'
L54	S11°14'01"W	202.12'
L55	S18°35'22"W	92.81'
L56	S30°46'03"W	90.00'
L57	S53°38'05"W	154.88'
L58	S74°09'01"W	186.93'
L59	N01°57'39"E	338.67'
L60	S09°41'27"E	361.59'
L61	S65°30'46"W	51.71'
L62	N09°41'27"W	372.91'
L63	S78°08'11"W	111.48'



TM38-A-15  
Sterling Investments, LLC.  
Inst.No.170000868

TM38-A-16  
George J. Collins  
Homer Collins  
Inst.No.201200333  
Plat D.B.146 p.325

TM52-11-D  
Larry D. Atkins  
Inst.No.150001146  
P.C. A. Slide 314#1

**Sheet 2 of 5**  
Survey  
of  
**Old Ridge Estates**

Farmville District, Prince Edward County, Virginia  
August 1, 2017  
Scale: 1in.=300ft.



**Maxey & Associates, P.C.**  
Land Surveyors • Engineers • Planners • Consultants  
P.O. Box 90 • Farmville • Virginia • 23901 • Tel:434-392-8827