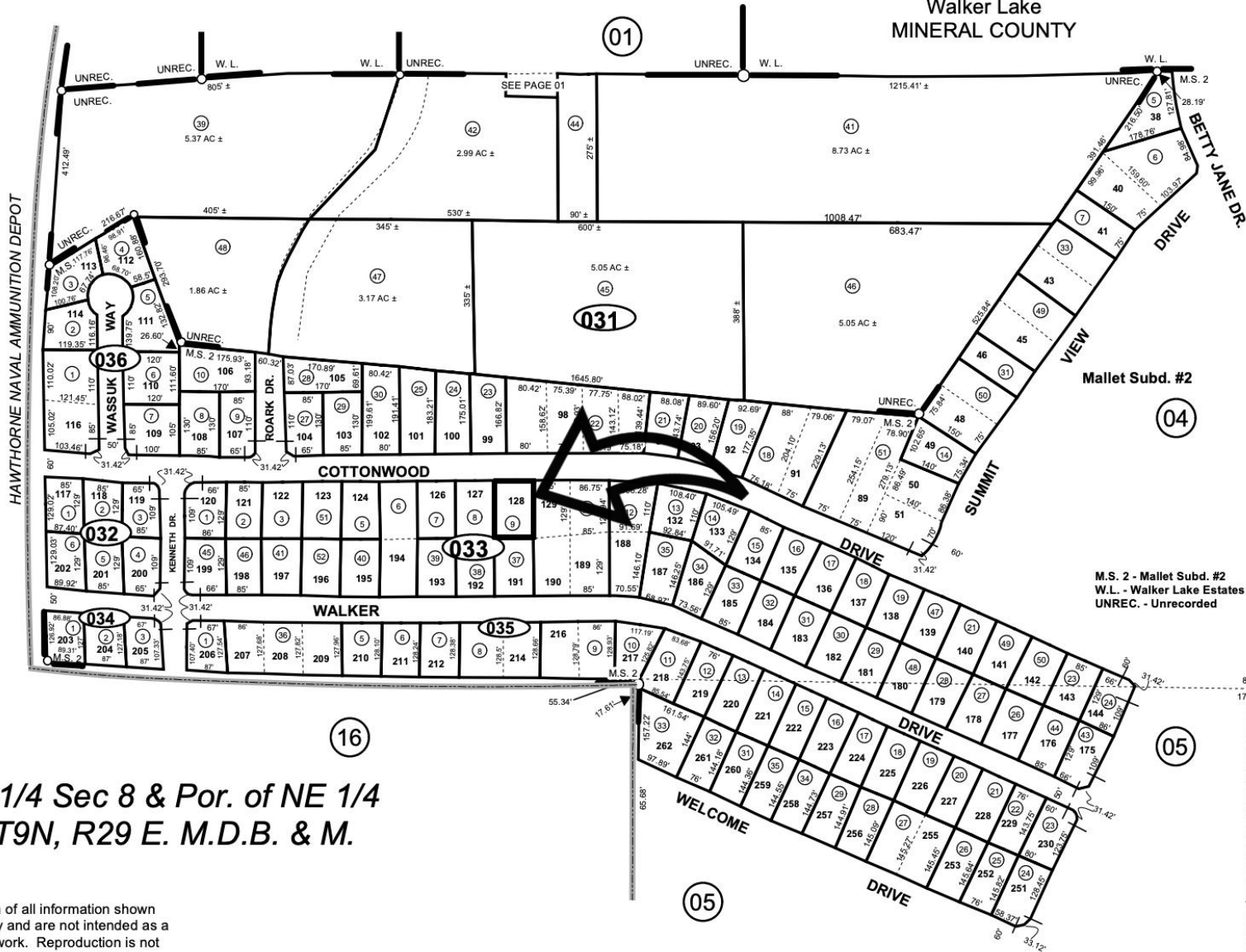


Walker Lake
MINERAL COUNTY



Por. of SE 1/4 Sec 8 & Por. of NE 1/4
Sec. 17, T9N, R29 E. M.D.B. & M.

The scale and configuration of all information shown herein are approximate only and are not intended as a guide for design or survey work. Reproduction is not permitted without prior written permission from the Mineral County Nuclear Projects Office.



- REVISIONS:
- REV/DEC 17/KR
 - REV/AUG 17/KR
 - REV/NOV 13/LM
 - REV/AUG 06/LM
 - REV/NOV 04/LC
 - REV/NOV 99/CK
 - REV/DOAS/FEB 95/DA
 - DOT/DOAS/JAN 85/TEX
 - OT/DOAS/NOV 76/JF

