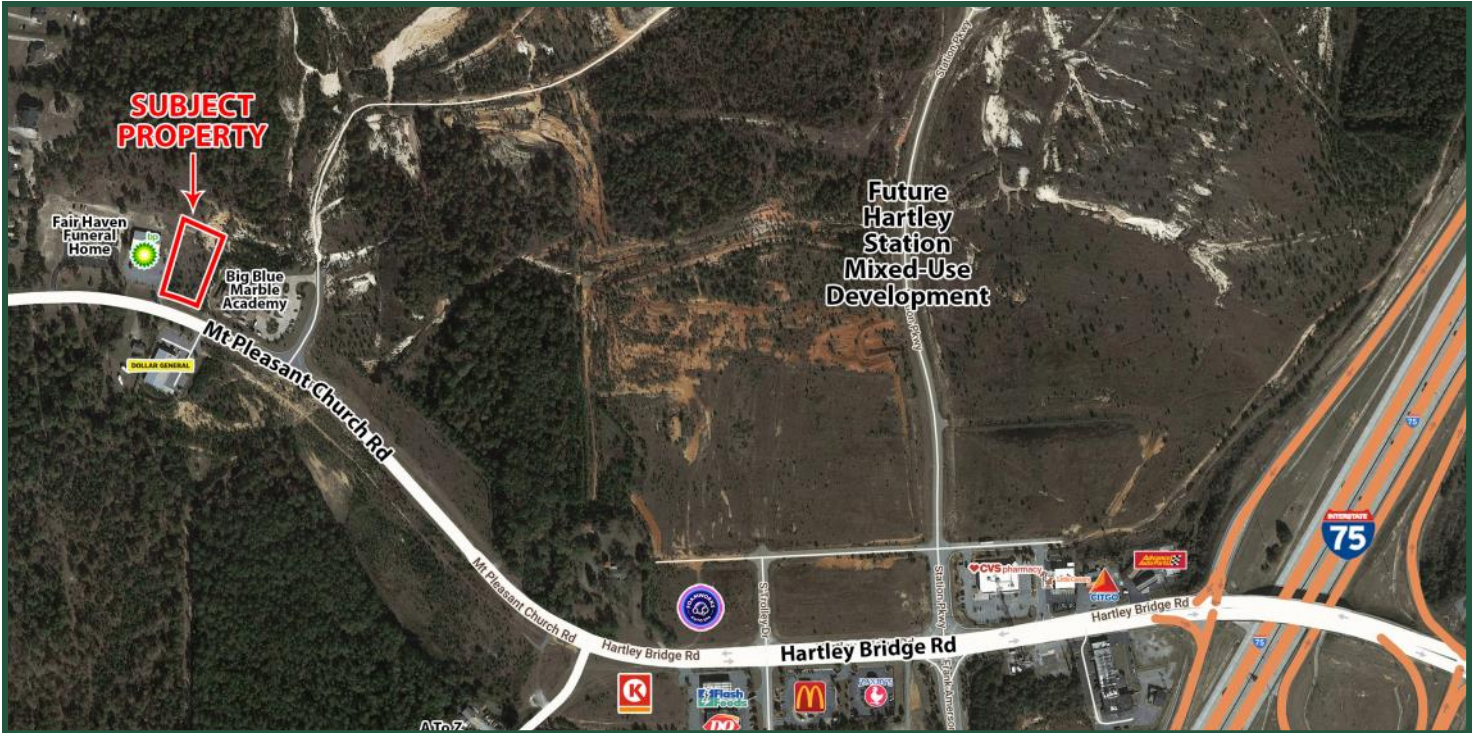


1.07 ACRES - FOR SALE

4945 Mount Pleasant Church Road
Macon, GA 31216



- Lot Size:** 1.07 Acres
- Frontage:** 150' on Mount Pleasant Church Road
- Depth:** 290'
- Utilities:** All Available
- Topography:** Flat
- Zoning:** PDE
- Traffic Count:** 6,960 VPD - Mount Pleasant Church Road
18,500 VPD - Hartley Bridge Road
77,800 VPD - I-75
59,500 VPD - I-475
- Location:** Property is located adjacent to a future mixed-use development on Hartley Bridge Road, west of I-75. Neighbors include Big Blue Marble Academy (preschool), Fair Haven Funeral Home, BP, and Dollar General.

2021 DEMOS	1 Mile	3 Mile	5 Mile
Population	968	13,775	35,457
Median Age	40.0	37.3	35.8
Average HH Income	\$108,474	\$68,264	\$64,251

Sale Price: \$500,000

**FOR MORE
INFORMATION
CONTACT**

Trip Wilhoit, CCIM, ALC
478-746-9421 (O)
478-960-4080 (C)
trip@fickling.com

Patty Burns, CCIM, ALC
478-746-9421 (O)
478-951-5100 (C)
patty@fickling.com

commercial.fickling.com | georgiacommercialrealestate.net

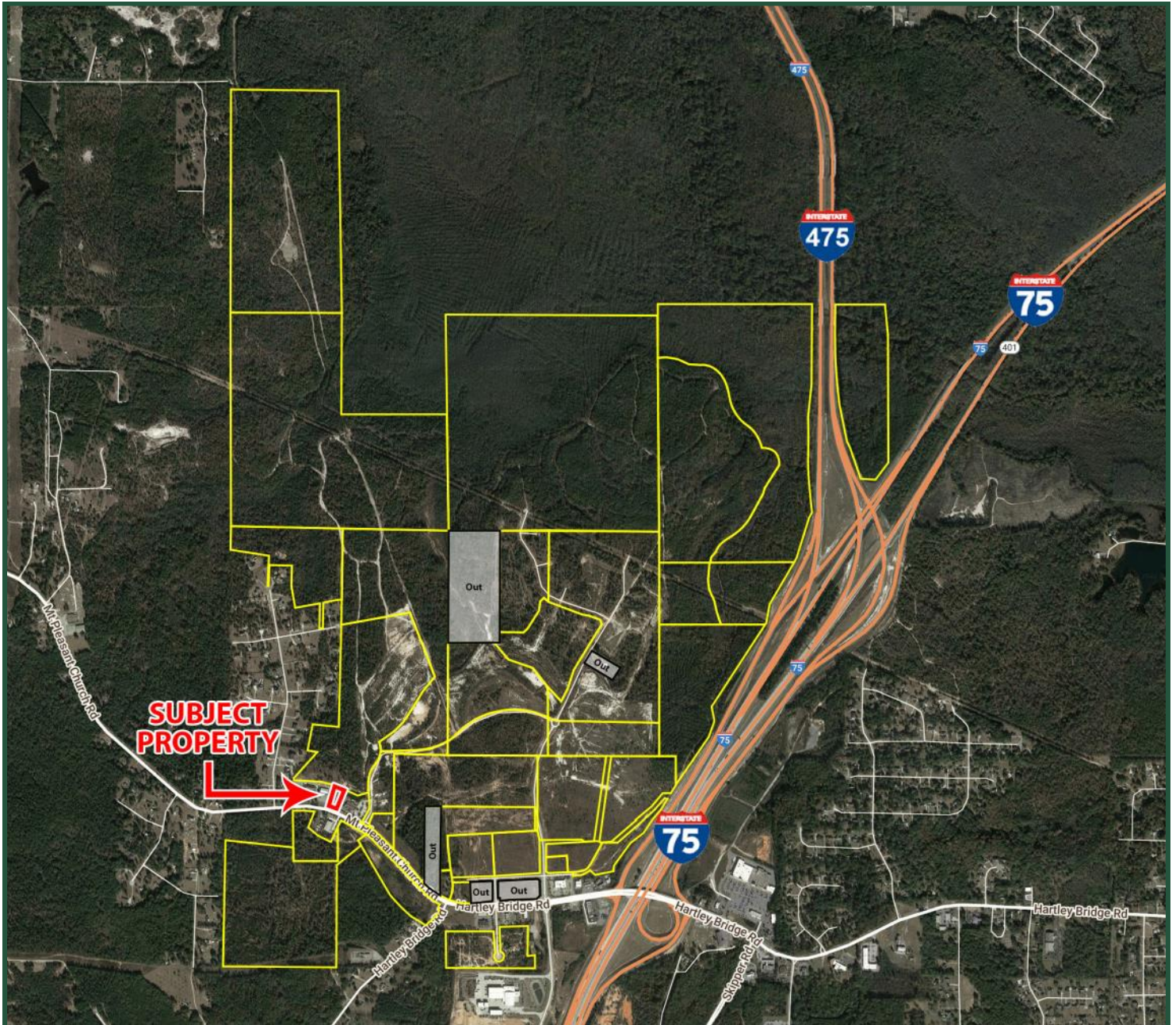
577 Mulberry St, Suite 1100 * P.O. Box 310 * Macon, GA 31202 | Phone (478) 746-9421 | Fax (478) 742-2015

This information is from resources deemed to be reliable, no warranties or guarantees for accuracy are made by Fickling and Company

1.07 ACRES - FOR SALE

4945 Mount Pleasant Church Road
Macon, GA 31216

Future Hartley Station Development



**FOR MORE
INFORMATION
CONTACT**

Trip Wilhoit, CCIM, ALC
478-746-9421 (O)
478-960-4080 (C)
trip@fickling.com

Patty Burns, CCIM, ALC
478-746-9421 (O)
478-951-5100 (C)
patty@fickling.com

commercial.fickling.com | georgiacommercialrealestate.net

577 Mulberry St, Suite 1100 * P.O. Box 310 * Macon, GA 31202 | Phone (478) 746-9421 | Fax (478) 742-2015

This information is from resources deemed to be reliable, no warranties or guarantees for accuracy are made by Fickling and Company