



FOR SALE



SUMMARY

Sale Price:	\$435,000
Acreage:	5 AC
2023 SEV:	\$250,000
2024 Taxes:	\$15,022
Zoning:	BD (Business District Commercial) Pittsfield Twp

PROPERTY OVERVIEW

Discover an exceptional commercial development opportunity with this 5-acre parcel strategically located in Pittsfield Township, between I-94 and US-12 (Michigan Avenue)—a prime corridor for business growth and accessibility.

Preliminary site plan is completed.

Ideal Uses: Office, Indoor Recreation, Light Manufacturing, Technology Centers, Office Research, Basic Research, Design, and Pilot or Experimental Product Development

Utilities: Municipal water and sewer available

This versatile property offers tremendous potential for investors, developers, and businesses looking to establish or expand in a high-demand location.

Building relationships.

208 East Washington Street Ann Arbor, MI 48104

734.663.0501

Charlie Koenn

734.926.0230

CKOENN@SWISHERCOMMERCIAL.COM

Bart Wise

734.358.0354

BARTW@SWISHERCOMMERCIAL.COM

Commercial Development Land for Sale

5801 S. STATE ST, ANN ARBOR, MI 48108



5 Acre Aerial

Building relationships.

208 East Washington Street Ann Arbor, MI 48104

734.663.0501

Charlie Koenn

734.926.0230

CKOENN@SWISHERCOMMERCIAL.COM

Bart Wise

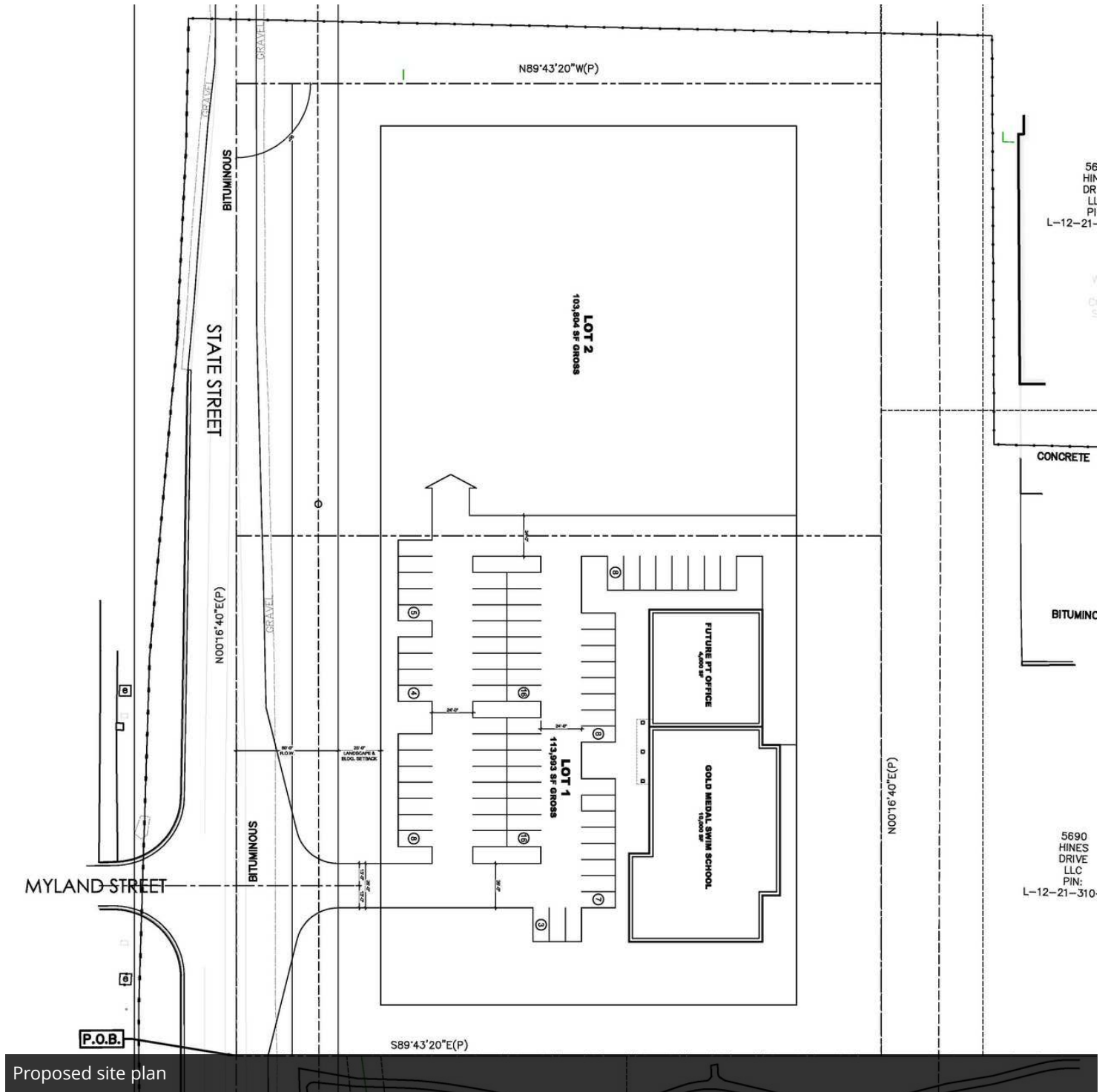
734.358.0354

BARTW@SWISHERCOMMERCIAL.COM

SWISHERCOMMERCIAL.COM

Commercial Development Land for Sale

5801 S. STATE ST, ANN ARBOR, MI 48108



Building relationships.

208 East Washington Street Ann Arbor, MI 48104

734.663.0501

Charlie Koenn

734.926.0230

CKOENN@SWISHERCOMMERCIAL.COM

Bart Wise

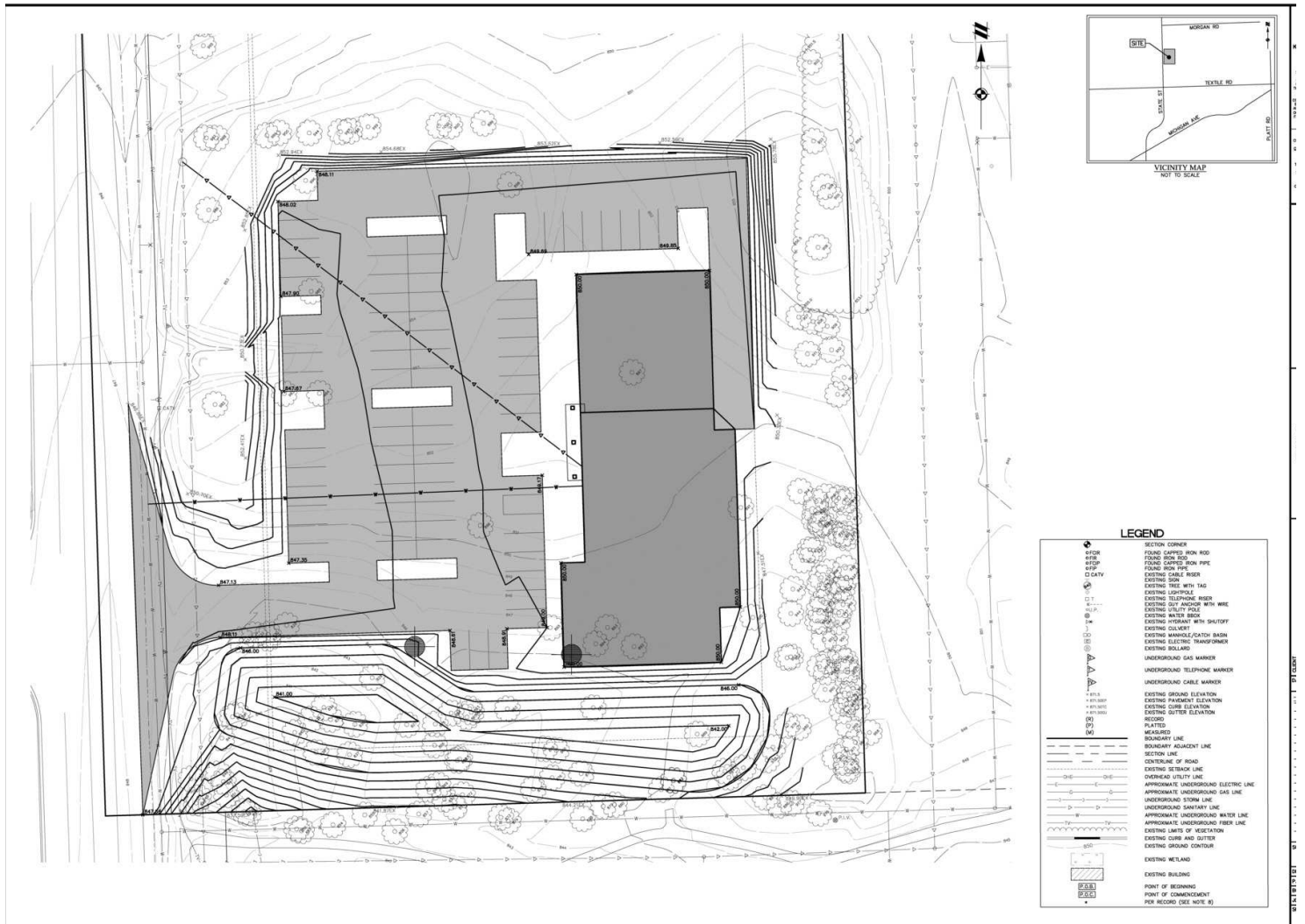
734.358.0354

BARTW@SWISHERCOMMERCIAL.COM

SWISHERCOMMERCIAL.COM

Commercial Development Land for Sale

5801 S. STATE ST, ANN ARBOR, MI 48108



Proposed site plan

Building relationships.

208 East Washington Street Ann Arbor, MI 48104

734.663.0501

Charlie Koenn
Bart Wise

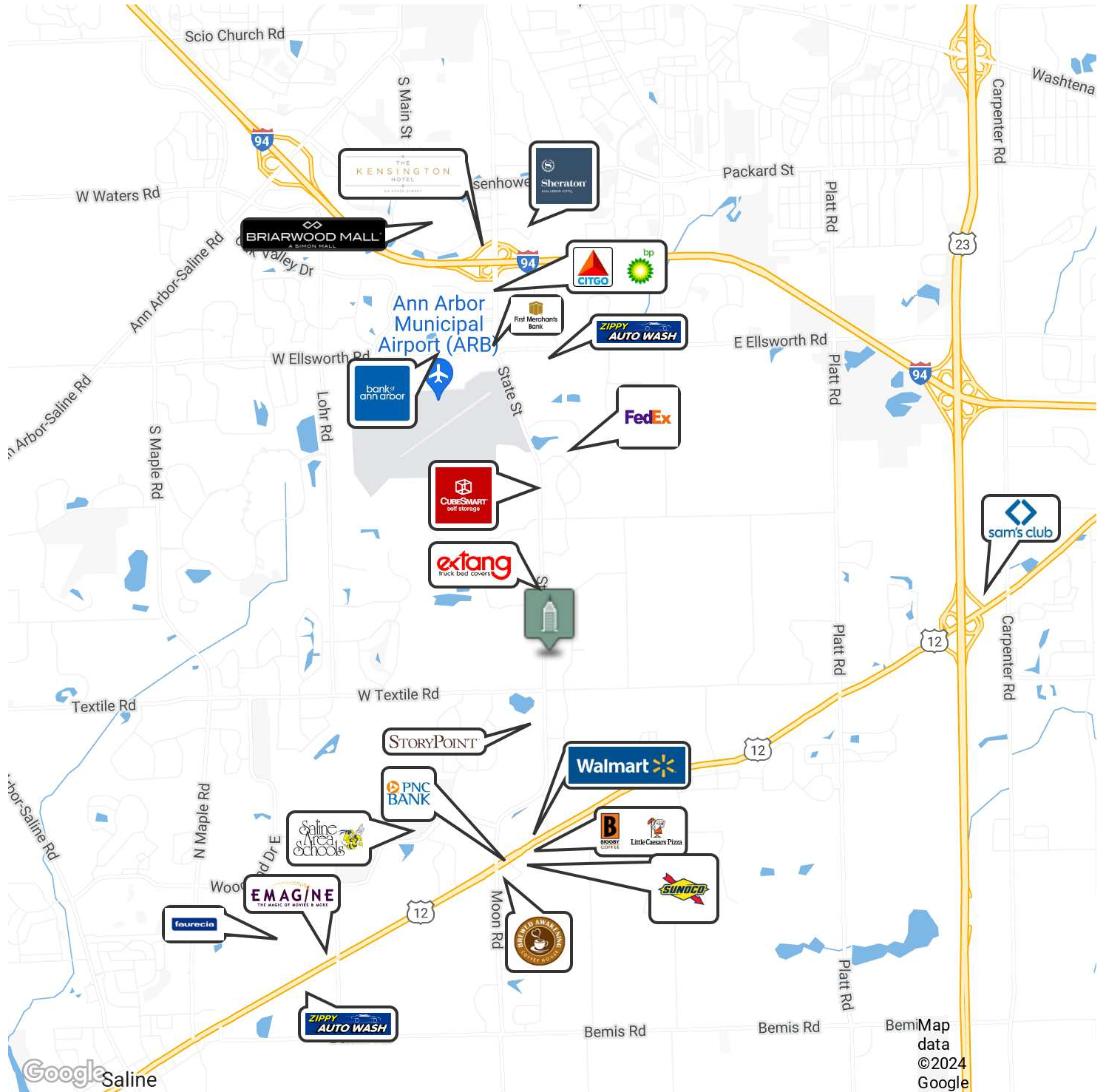
734.926.0230
734.358.0354

CKOENN@SWISHERCOMMERCIAL.COM
BARTW@SWISHERCOMMERCIAL.COM

SWISHERCOMMERCIAL.COM

Commercial Development Land for Sale

5801 S STATE, ANN ARBOR, MI 48108



208 East Washington Street Ann Arbor, MI 48104

734.663.0501

Building relationships.

Charlie Koenn

734.926.0230

CKOENN@SWISHERCOMMERCIAL.COM

Bart Wise

734.358.0354

BARTW@SWISHERCOMMERCIAL.COM

SWISHERCOMMERCIAL.COM

Commercial Development Land for Sale

5801 S STATE, ANN ARBOR, MI 48108



DEMOGRAPHICS	1 MILE	3 MILES	5 MILES
Total population	1,364	20,096	102,058
Median age	38.6	40.0	37.9
Median age (Male)	36.0	37.9	36.3
Median age (Female)	43.3	42.9	38.8
Total households	494	8,368	42,333
Total persons per HH	2.8	2.4	2.4
Average HH income	\$165,891	\$123,118	\$103,056
Average house value	\$713,775	\$568,518	\$353,655

Google

Imagery ©2025 Airbus, CNES / Airbus, Maxar Technologies

Building relationships.

208 East Washington Street Ann Arbor, MI 48104

734.663.0501

Charlie Koenn

734.926.0230

CKOENN@SWISHERCOMMERCIAL.COM

Bart Wise

734.358.0354

BARTW@SWISHERCOMMERCIAL.COM

SWISHERCOMMERCIAL.COM