



BROWNING RANCH SOUTH

CR 707
WEBSTER, FL 33597

Zeb Griffin, ALC
O: 352.504.3445 | C: 352.630.7547
zeb.griffin@svn.com



Sale Price **\$698,625**

OFFERING SUMMARY

Acreage: 125 Acres
Price / Acre: \$5,589
City: Webster
County: Sumter
Property Type: Land: Ranch

PROPERTY OVERVIEW

Browning Ranch South is mostly wooded and is a mixture of oak hammocks and wet prairies. This tract is suited to the outdoorsmen and provides hunting opportunities for deer, turkey, and hog. Wood ducks and teal are also commonly seen in the prairies as well. Much of the wooded portion of the property has large live oaks throughout. There are 150 ± contiguous acres available for sale. Call the listing agent for more details.



SPECIFICATIONS & FEATURES

Land Types:	Ranch
Uplands / Wetlands:	85 ± acres uplands/ 40 ± acres wetlands
Taxes & Tax Year:	2021 - \$1,390
Zoning / FLU:	A10C
Road Frontage:	CR 707 frontage and Access off of Hwy 50



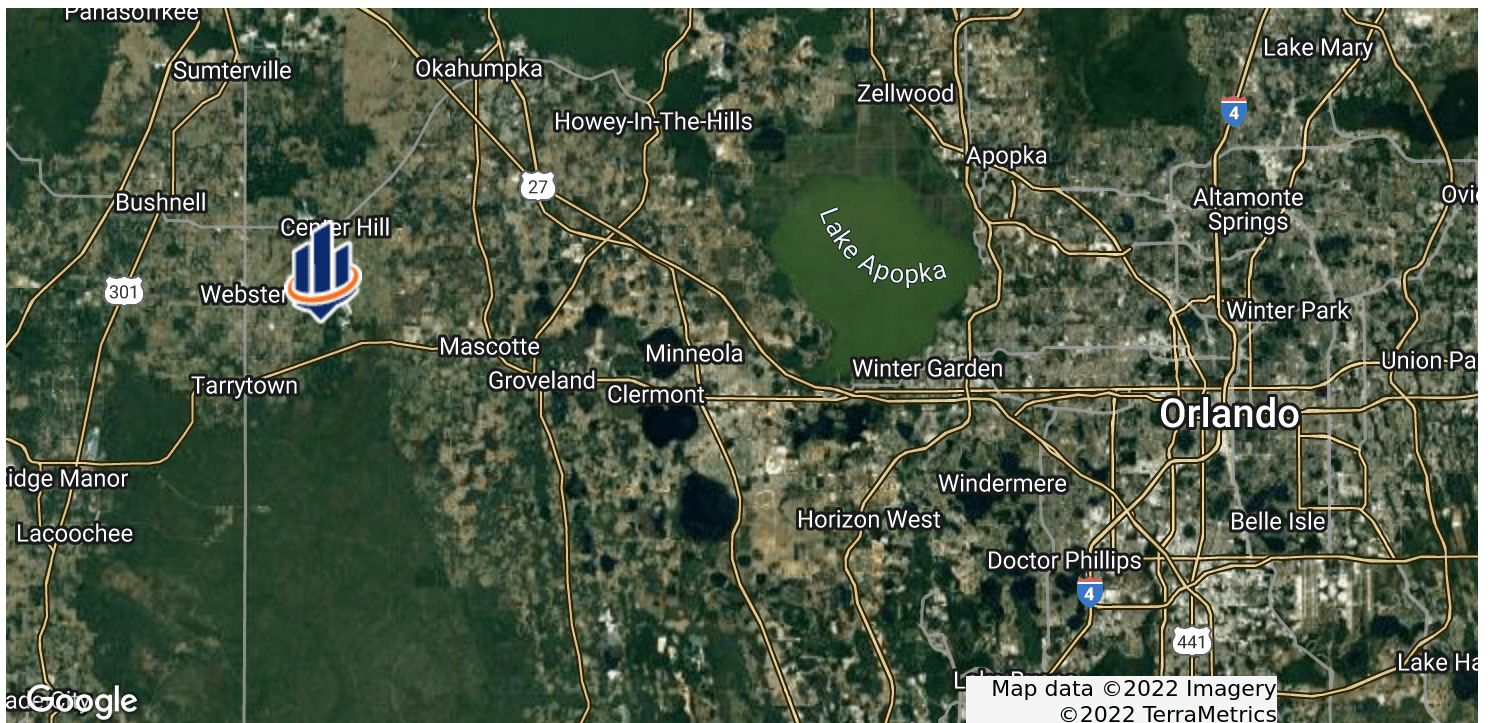
LOCATION & DRIVING DIRECTIONS

Parcel: T10-012 T10-013 T10-010 T11-020 T11-010 T14-036

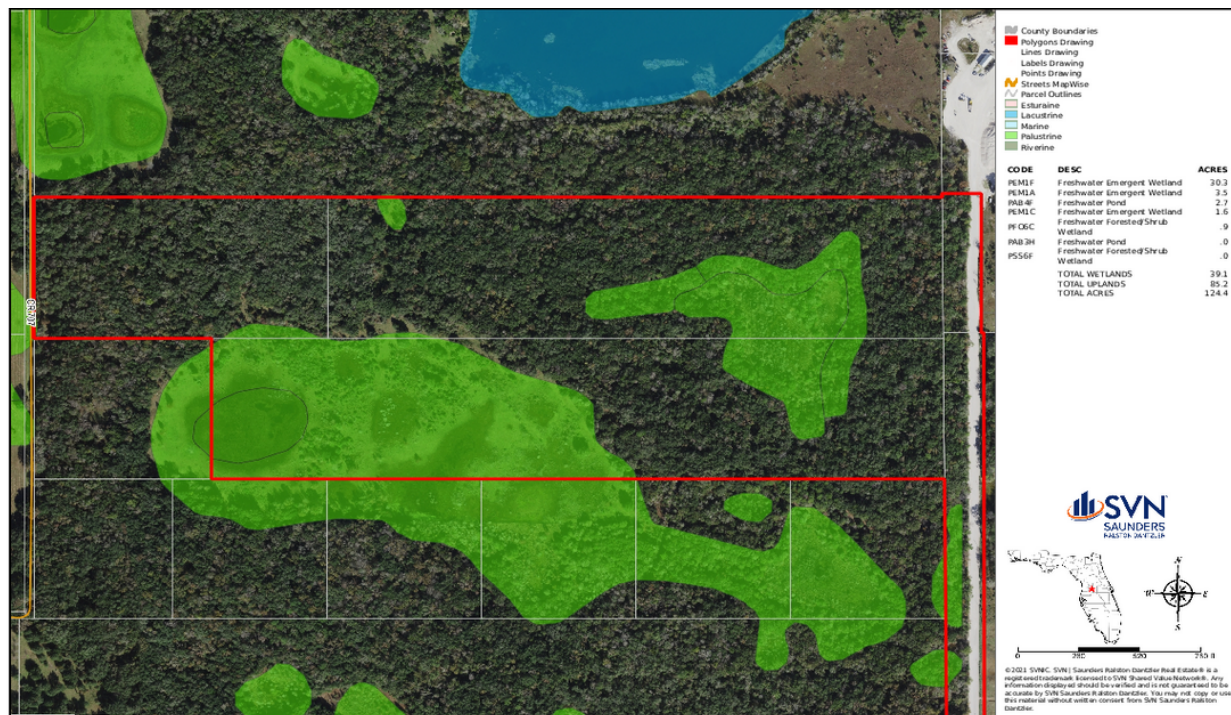
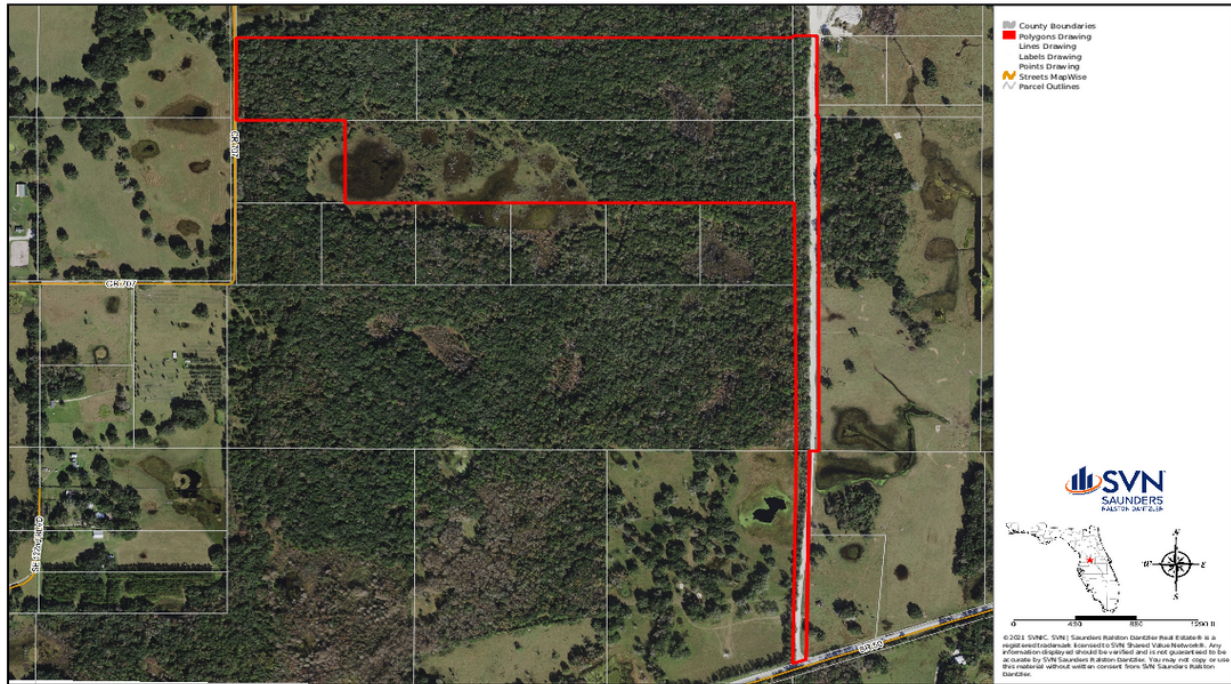
GPS: 28.5882961, -82.000625

Driving Directions:

Showing Instructions: Contact listing agent.



Property Maps









1723 Bartow Rd
Lakeland, Florida 33801
352.504.3445

125 N Broad Street, Suite 210
Thomasville, Georgia 31792
229.299.8600

356 NW Lake City Ave
Lake City, Florida 32055
386.438.5896

www.SVNsaunders.com

All SVN® Offices Independently Owned & Operated | 2022 All Right Reserved

©2021 SVN | Saunders Ralston Dantzler Real Estate. All SVN® Offices Independently Owned and Operated SVN | Saunders Ralston Dantzler Real Estate is a full-service land and commercial real estate brokerage with over \$3 billion in transactions representing buyers, sellers, investors, institutions, and landowners since 1996. We are recognized nationally as an authority on all types of land, including agriculture, ranch, recreation, residential development, and international properties. Our commercial real estate services include marketing, property management, leasing and tenant representation, valuation, business brokerage, and advisory and counseling services for office, retail, industrial, and multi-family properties. Our firm also features an auction company, forestry division, international partnerships, hunting lease management, and extensive expertise in conservation easements. Located at the center of Florida's I-4 corridor, we provide proven leadership and collaborative expertise backed by the strength of the SVN® global platform. To learn more, visit SVNsaunders.com.

