



COX PLACE FARM

CHIEFLAND, FL

David Genho
407.501.5972 | 407.952.9487
dgenho@svn.com

Property Overview



Sale Price **\$6,115,000**

OFFERING SUMMARY

Acreage: 382.2 Acres
Price / Acre: \$15,999
City: Chiefland
County: Levy
Property Type: Farm
Video: [View Here](#)

PROPERTY OVERVIEW

The Cox Place Farm is 382 ± acres of pivot ground located within the city limits of Chiefland, Florida. The farm is on the very northern boundary of the city limits and is within two miles of Winn-Dixie, Wal-Mart, and several other stores. Utilities within the city limits are provided by the City of Chiefland.

The property features two center pivots totaling approximately 233 acres of irrigated farm ground. A mixture of corn, watermelons, winter annuals, and peanuts are grown in the area. This farm can be directly operated or leased out to local farms.

In addition to the farm ground, there are approximately 121 acres of pasture and 28 acres of upland hardwood forest and forest regeneration areas.

Specifications & Features



SPECIFICATIONS & FEATURES

Land Types:

- Farms & Nurseries Properties
- Land Investment
- Ranch
- Transitional
- Vegetables

Uplands / Wetlands:

100% Uplands

Soil Types:

Otela-Candler Complex; Jonesville-Otela-Seaboard Complex

Taxes & Tax Year:

\$5,076 for 2021 and a portion of parcel 0061800000 for \$1,358.55

Water Source & Utilities:

City of Chiefland

Road Frontage:

1.1 Miles Along Old Fannin Road

Nearest Point of Interest:

Manatee Springs State Park
Andrews Wildlife Management Area
Suwannee River

Fencing:

Partially Fenced

Current Use:

Hay Field

Grass Types:

Bermuda

Land Cover:

Improved Pasture; Row Crops; Upland
Hardwood Forest

Water use Permits:

221779 Shared with Other Property

Location



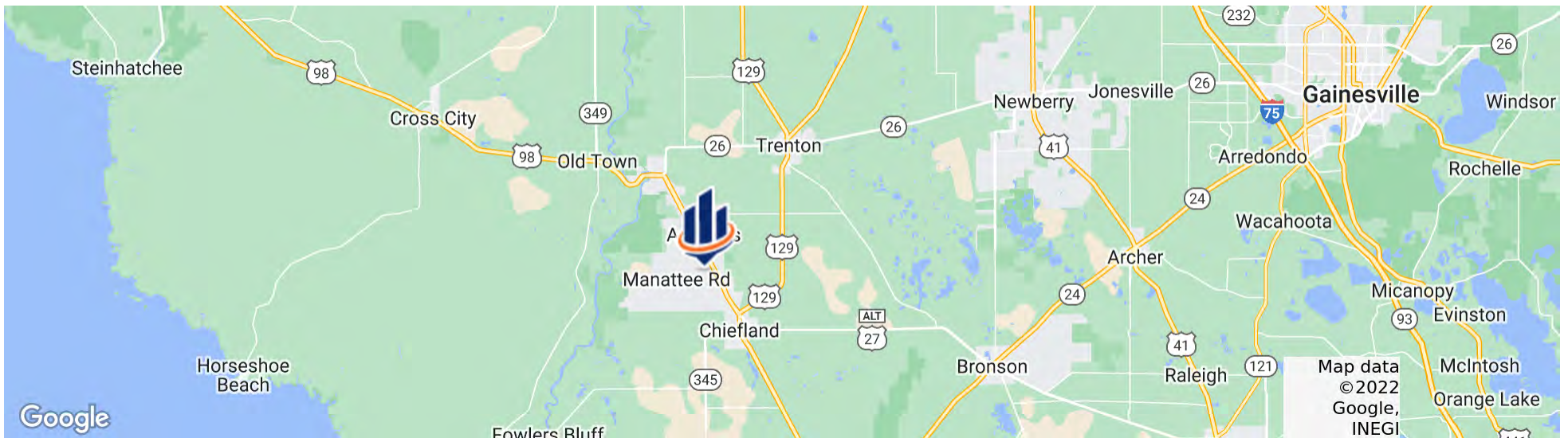
LOCATION & DRIVING DIRECTIONS

Parcel: Multiple in Levy County [3]

GPS: 29.517453, -82.8875854

Driving Directions: From Chiefland Head North on Highway 19; Turn Left on Manatee Springs Road then turn right at the next road NW 14th Street then merge left at Old Fannin Springs Road; The property will be on the left in 1.25 miles

Showing Instructions: Contact David Genho



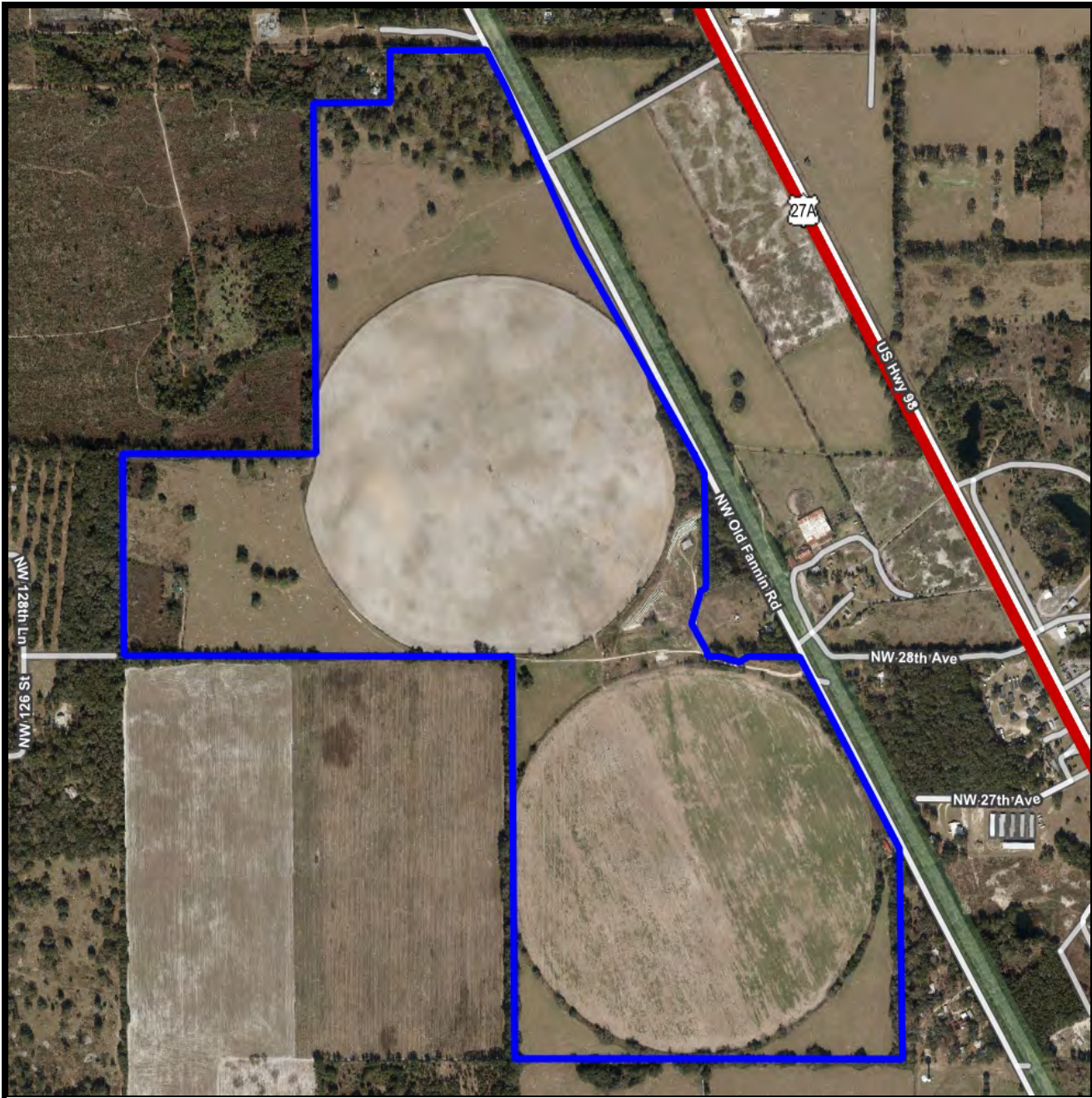
Additional Photos



Additional Photos

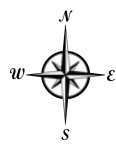




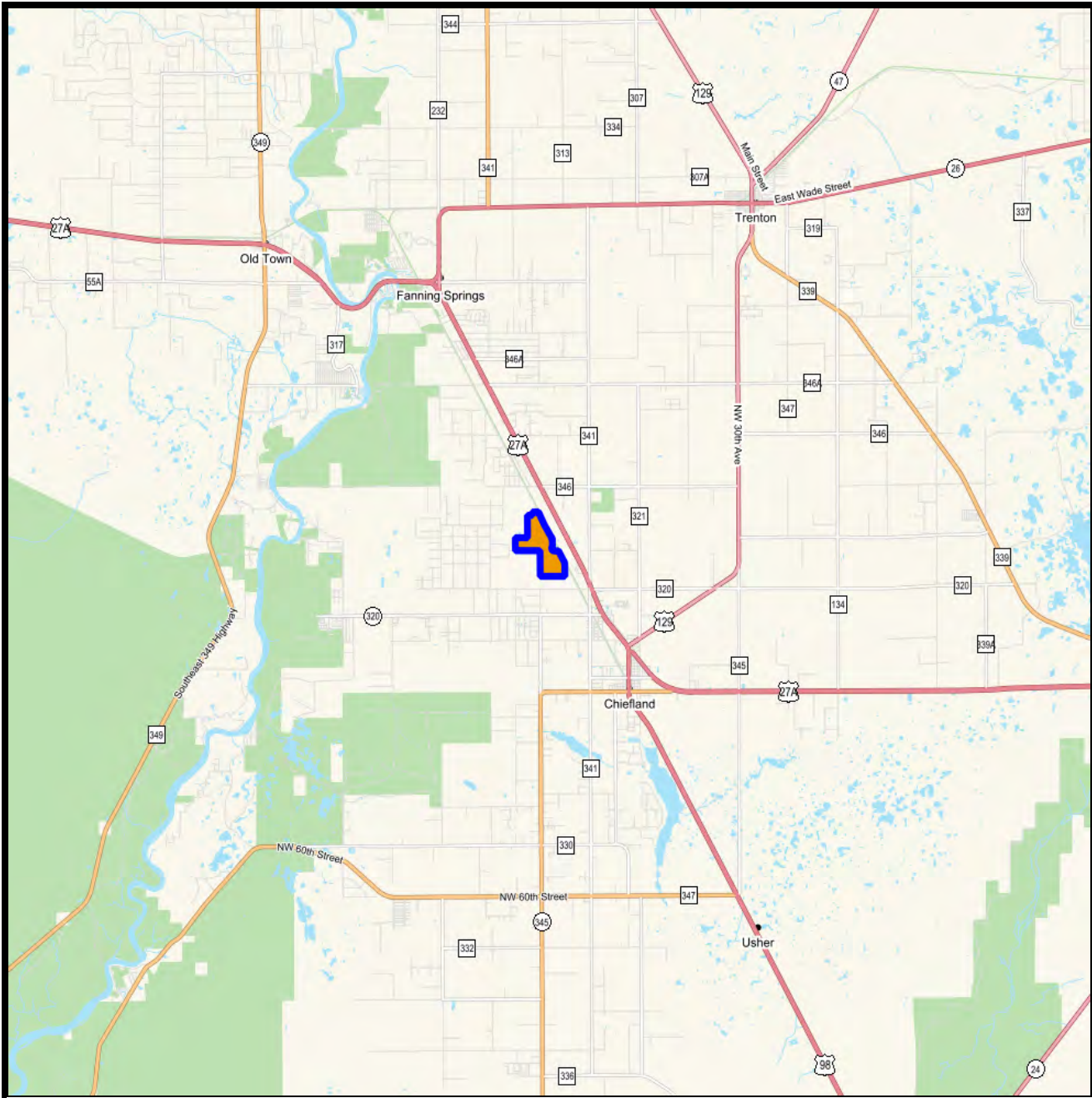


Aerial

- Polygons Drawing
- Lines Drawing
- Labels Drawing
- Points Drawing
- Toll Roads
- Interstates
- US Roads
- State Roads
- County Roads
- Streets MapWise
- Interstates
- Toll Roads
- US Roads
- State Roads
- County Roads
- Managed Lands FNAI
- Water Labels
- Water Labels
- Water Labels

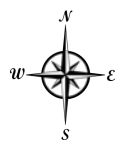


© 2021 SVNIC. SVN | Saunders Ralston Dantzler Real Estate® is a registered trademark licensed to SVN Shared Value Network®. Any information displayed should be verified and is not guaranteed to be accurate by SVN Saunders Ralston Dantzler. You may not copy or use this material without written consent from SVN Saunders Ralston Dantzler.



Vicinity

- Polygons Drawing
- Lines Drawing
- Labels Drawing
- Points Drawing
- ▬ Water Labels
- ▬ Water Labels
- ▬ Water Labels



© 2021 SVNIC. SVN | Saunders Ralston Dantzler Real Estate® is a registered trademark licensed to SVN Shared Value Network®. Any information displayed should be verified and is not guaranteed to be accurate by SVN Saunders Ralston Dantzler. You may not copy or use this material without written consent from SVN Saunders Ralston Dantzler.



DAVID GENHO

Advisor

dgenho@svn.com

Direct: 407.501.5972 | Cell: 407.952.9487

PROFESSIONAL BACKGROUND

David Genho is a Senior Advisor at SVN | Saunders Ralston Dantzler Real Estate in Lakeland, Florida.

David has an extensive background in land and ranch management including enterprise analysis, developing production systems, and strategic planning. Previously, he was the President and General Manager for Alico Conservation and Environmental Resources (Alico Ranch). Prior to working for Alico, David was the Operations Manager for Deseret Cattle & Citrus.

David, as well as two of his sons, is an Eagle Boy Scout and serves in various youth leadership programs. He holds a Bachelor of Science degree in Animal Science & Agribusiness from Brigham Young University and a Master of Science degree in Ranch Management from The King Ranch Institute for Ranch Management (Texas A&M-Kingsville).

David is an active member of both the Florida Cattlemen's and National Cattlemen's Association. He sits on the Florida Beef Council, the Cattle Enhancement Board, various IFAS advisory boards, and the FWC Private Lands Advisory Board. David also serves in leadership roles across various South Florida Water Control Districts and on the Research and Education Committee for the Florida Cattlemen's Association.

David and his wife Leslie reside in Highlands County with their six children.

David specializes in:

- Ranch Land
- Agricultural Properties

SVN | Saunders Ralston Dantzler

1723 Bartow Rd
Lakeland, FL 33801

Advisor & Office LOCATIONS

Our company includes over 70 advisors who are highly credentialed with specialized leadership in organizations across the real estate industry including 11 Certified Commercial Investment Member (CCIM) designees and 9 Accredited Land Consultant (ALC) among many other notable certifications. With offices in Florida and Georgia, we offer increased value to our clients on both sides of the state line.



★ HEADQUARTERS

1723 Bartow Road
Lakeland, Florida 33801
863.648.1528

★ ORLANDO

605 E Robinson Street, Suite 410
Orlando, Florida 32801
407.516.4300

★ NORTH FLORIDA

356 NW Lake City Avenue
Lake City, Florida 32055
386.438.5896

★ GEORGIA

125 N Broad Street, Suite 210
Thomasville, Georgia 31792
229.299.8600



For more information visit SVNsaunders.com

HEADQUARTERS

1723 Bartow Road
Lakeland, Florida 33801
863.648.1528

ORLANDO

605 E Robinson Street, Suite 410
Orlando, Florida 32801
407.516.4300

NORTH FLORIDA

356 NW Lake City Avenue
Lake City, Florida 32055
386.438.5896

GEORGIA

125 N Broad Street, Suite 210
Thomasville, Georgia 31792
229.299.8600

©2022 SVN | Saunders Ralston Dantzler Real Estate. All SVN® Offices Independently Owned and Operated SVN | Saunders Ralston Dantzler Real Estate is a full-service land and commercial real estate brokerage with over \$4 billion in transactions representing buyers, sellers, investors, institutions, and landowners since 1996. We are recognized nationally as an authority on all types of land, including agriculture, ranch, recreation, residential development, and international properties. Our commercial real estate services include property management, leasing and tenant representation, valuation, business brokerage, and advisory and counseling services for office, retail, industrial, and multifamily properties. Our firm also features an auction company, forestry division, international partnerships, hunting lease management, and extensive expertise in conservation easements. Located in Florida and Georgia, we provide proven leadership and collaborative expertise backed by the strength of the SVN® global platform.

