

Development Site For Sale

Highway 56, Clinton, South Carolina 29325



SALE PRICE: \$19,000/ACRE



Back On The Market With New Pricing

Development Site | 65.62 Acres

- Laurens County Tax Map # 617-00-00-015
- **Price Reduced: \$19K/acre**
- Back on the market with New Pricing!
- Laurens County Tax Map # 617-00-00-015
- +-2,440' of frontage on Highway 56 & +-600' on Cambridge Road
- All utilities available including sewer
- Adjacent to Ingles Supermarket
- Less than 1 mile from Presbyterian College campus
- Adjacent to city limits of Clinton
- +-19 acres of merchantable loblolly pine
- +-47 acres of premerchantable loblolly pine
- Gently rolling topography



✉ **Rusty Hamrick**
+1 864 232 9040
rhamrick@naearlefurman.com

No Warranty Or Representation, Express Or Implied, Is Made As To The Accuracy Of The Information Contained Herein, And The Same Is Submitted Subject To Errors, Omissions, Change Of Price, Rental Or Other Conditions, Prior Sale, Lease Or Financing, Or Withdrawal Without Notice, And Of Any Special Listing Conditions Imposed By Our Principals No Warranties Or Representations Are Made As To The Condition Of The Property Or Any Hazards Contained Therein Are Any To Be Implied.

📍 **101 E Washington St**
Greenville, SC 29601
naearlefurman.com

Property Photos

Highway 56 Development Site, Clinton, SC



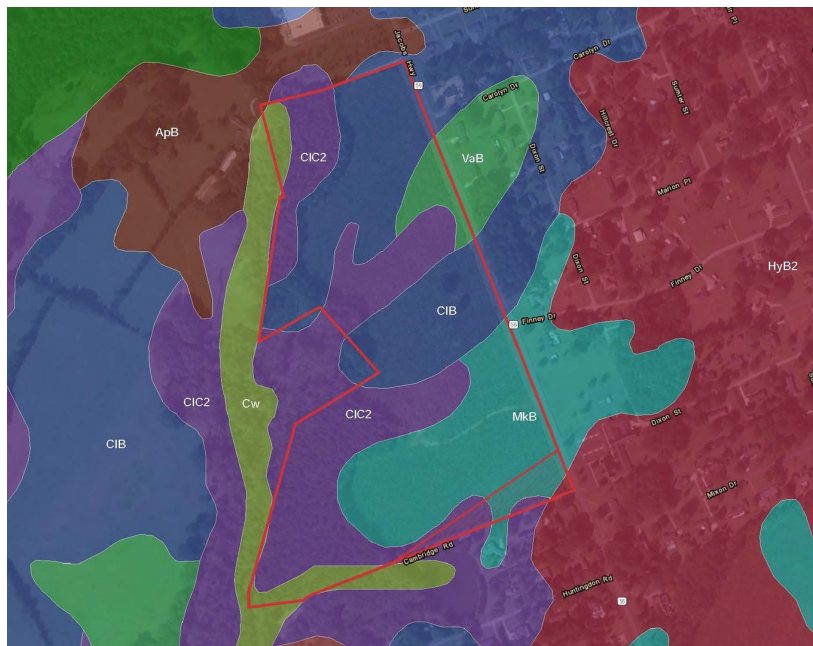
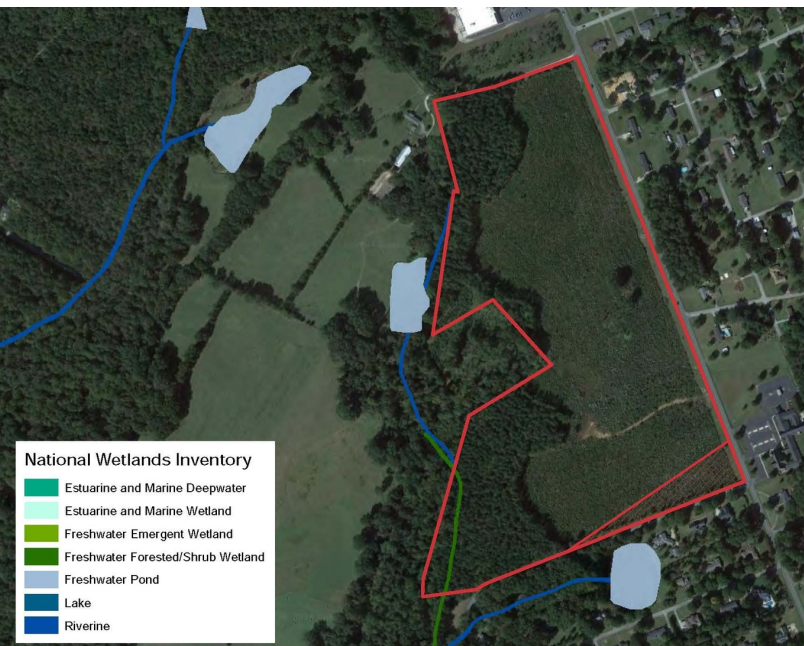
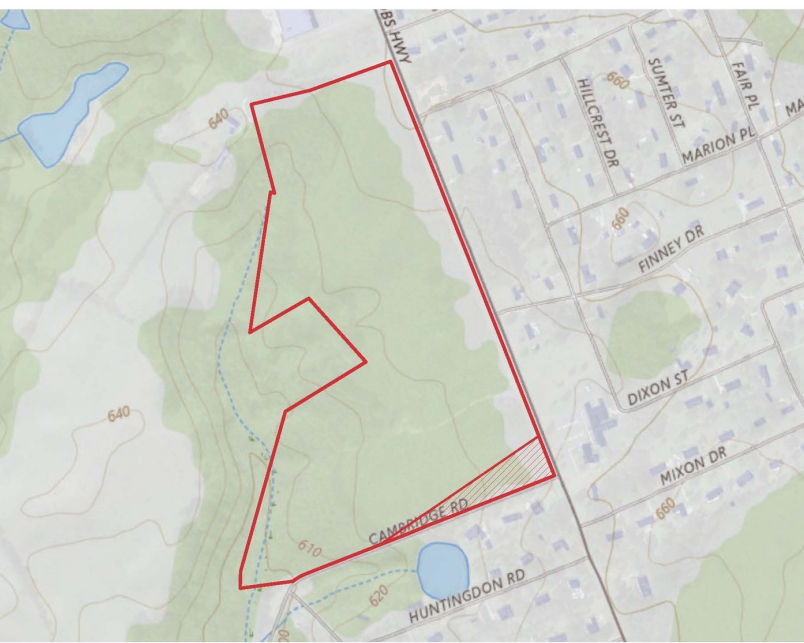
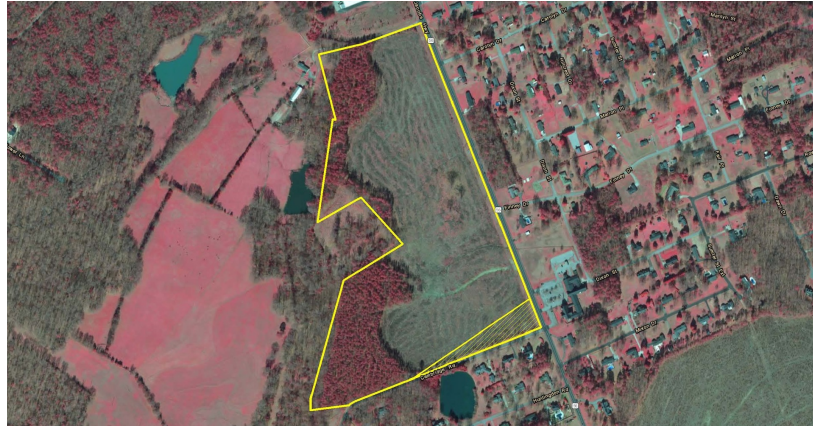
✉ Rusty Hamrick
+1 864 232 9040
rhamrick@naearlefurman.com

No Warranty Or Representation, Express Or Implied, Is Made As To The Accuracy Of The Information Contained Herein, And The Same Is Submitted Subject To Errors, Omissions, Change Of Price, Rental Or Other Conditions, Prior Sale, Lease Or Financing, Or Withdrawal Without Notice, And Of Any Special Listing Conditions Imposed By Our Principals No Warranties Or Representations Are Made As To The Condition Of The Property Or Any Hazards Contained Therein Are Any To Be Implied.

📍 101 E Washington St
Greenville, SC 29601
naearlefurman.com

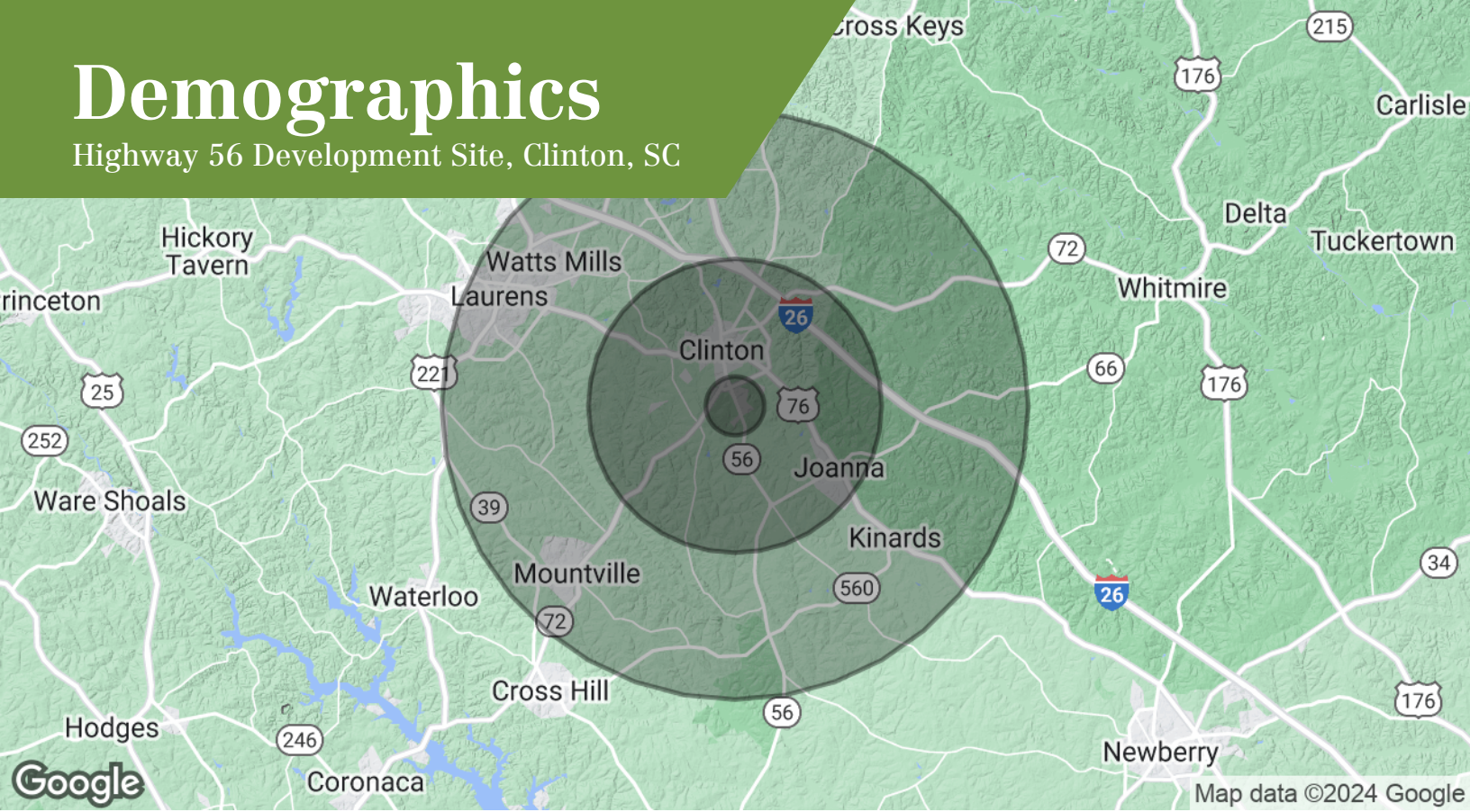
Map Set

Highway 56 Development Site, Clinton, SC



Demographics

Highway 56 Development Site, Clinton, SC



Population

	1 Mile	5 Miles	10 Miles
Total population	553	13,809	29,662
Median age	36.2	37.2	39.0
Median age (male)	31.9	34.1	37.0
Median age (Female)	37.7	39.9	41.0

Households & Income

	1 Mile	5 Miles	10 Miles
Total households	221	6,201	13,557
# of persons per HH	2.5	2.2	2.2
Average HH income	\$61,220	\$46,253	\$45,817
Average house value	\$160,306	\$104,582	\$97,995

* Demographic data derived from 2020 ACS - US Census