

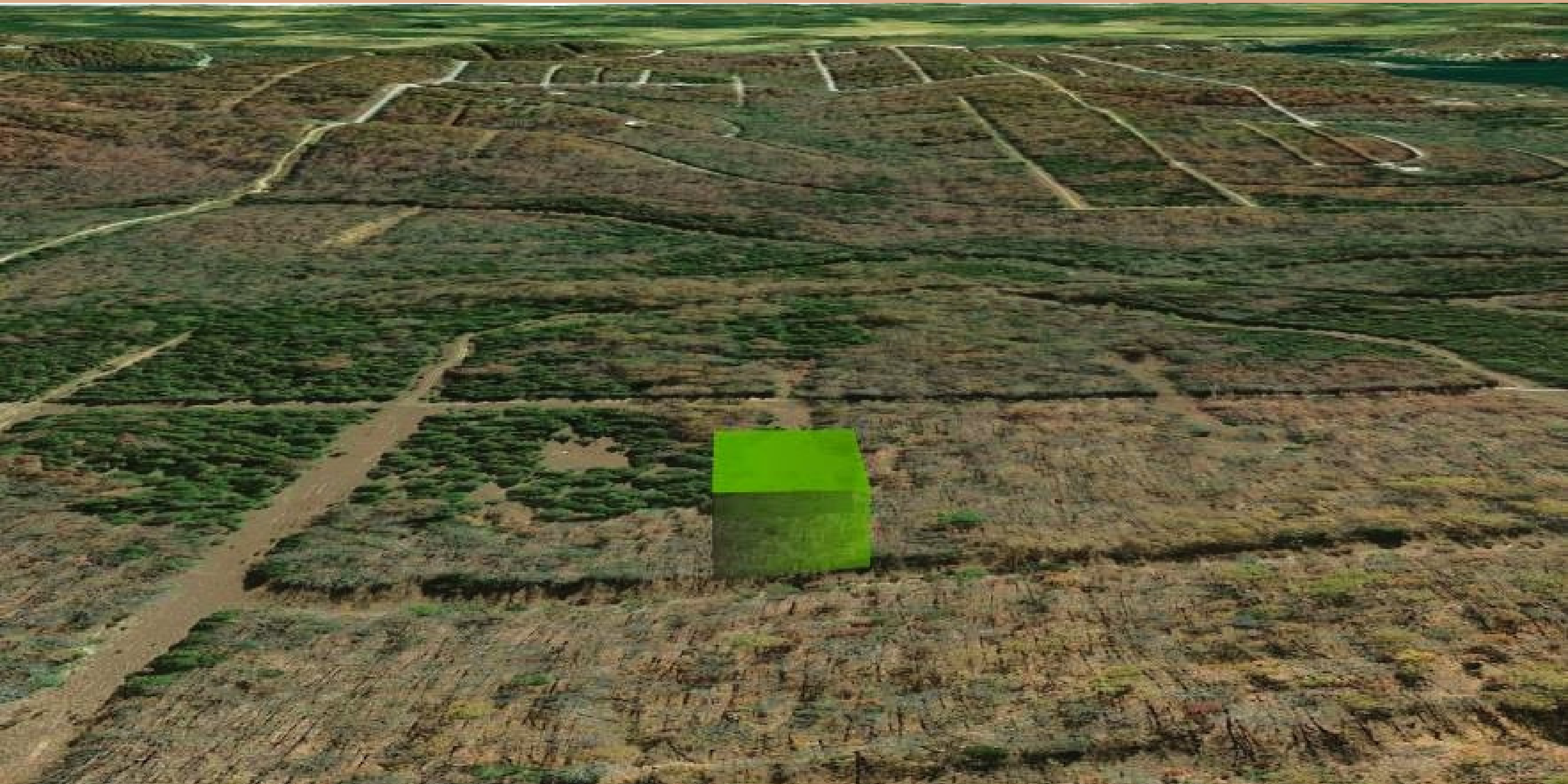
An aerial photograph of a rural landscape in Arkansas. The terrain is a mix of green fields, brownish soil, and some trees. A bright green rectangular highlight is placed on a field in the center of the image. In the bottom left corner, there is a semi-transparent brown rounded rectangle containing white text.

**0.35 acres in peaceful Arkansas!**  
\$129 down payment \$59/month

# Property Highlights

- Peaceful and Quiet
- Private, secluded location

# FACING SOUTH

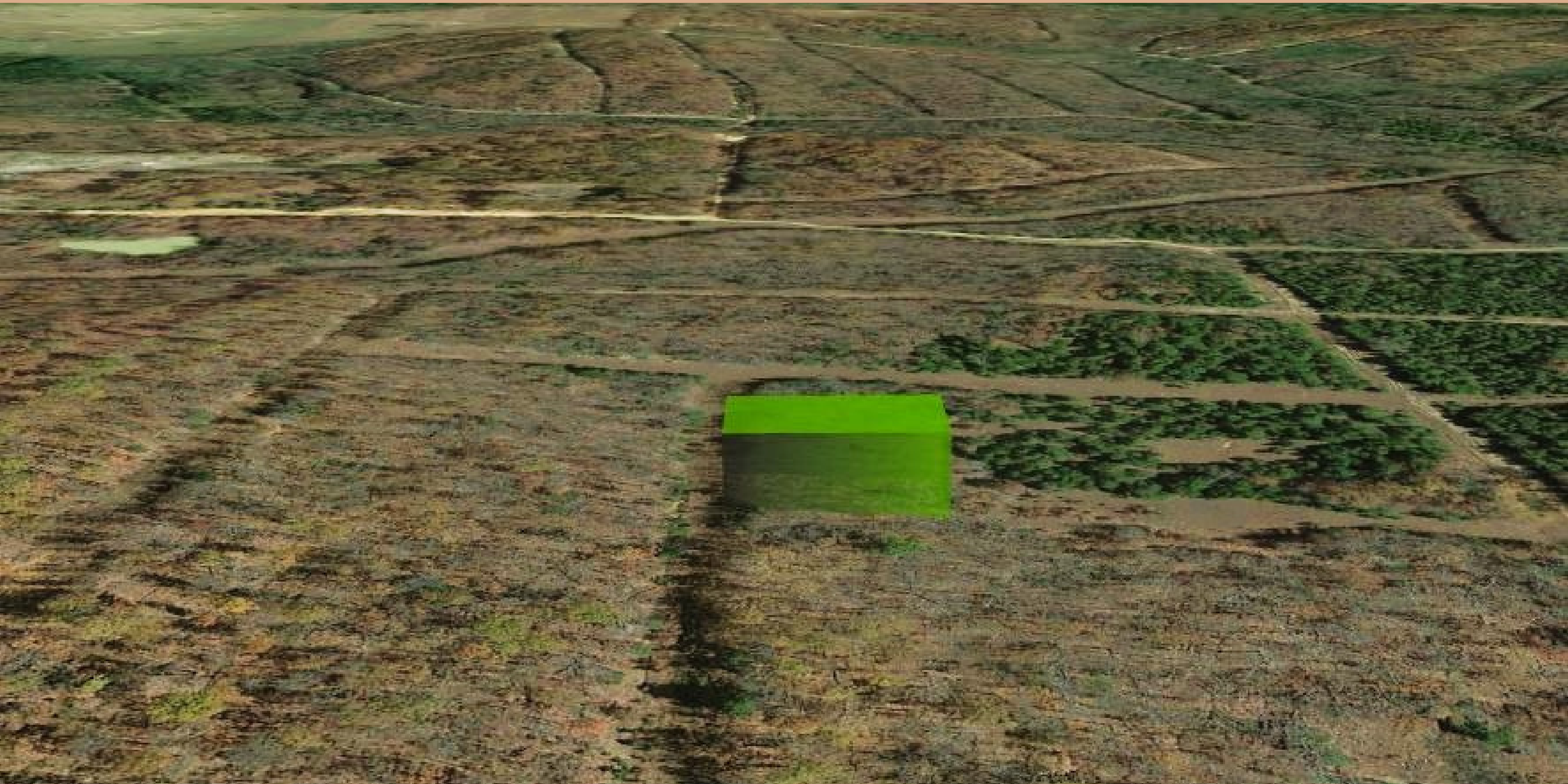




# FACING NORTH



# FACING EAST



# FACING WEST





# Nearby Attractions



**Crown Lake Pier**

**2.0 miles away from property**

**Turkey Mountain Golf Course  
3.4 miles away from property**



**Horseshoe Bend Garden Club  
Park**

**3.1 miles away from property**



# Interested or have questions?

*Contact us today!*



**682-382-9719**



**[sales@lifetimelandusa.com](mailto:sales@lifetimelandusa.com)**

