



LEVY COUNTY ISLANDS AND HOMESITE

1 TIDE OVER IS
YANKEETOWN, FL 34498

Mike Lansdell, ALC
912.409.0925
mike.lansdell@svn.com

Jeremiah Thompson
352.255.3670
jeremiah.thompson@svn.com

Greg Driskell
386.867.2736
greg.driskell@svn.com



Fiddler Ky

Tide Over Is

M. H. Carr Cross FL Greenway

Property Overview



Sale Price **\$2,500,000**

OFFERING SUMMARY

Acreage: **84 Acres**
Price / Acre: \$29,762
City: Yankeetown
County: Levy
Property Type: Island/Recreation, Homesite

PROPERTY OVERVIEW

The Levy County Islands and Homesite feature 84 ± waterfront acres on the Withlacoochee River and the Gulf of Mexico along Florida's Nature Coast. This beautiful piece of old Florida contains a boat ramp, acres of live oak hammocks, an open floor plan home, and quick access to some of the best saltwater flats fishing in the country while still within easy driving distance of Crystal River, Gainesville, and Ocala.

The property is located on Follow That Dream Parkway and is right next to one of the places where the movie 'Follow That Dream' starring Elvis Presley was filmed. Don't miss your opportunity to own an old Florida private island getaway. Contact a listing agent today!

Specifications & Features



SPECIFICATIONS & FEATURES

Land Types:	<ul style="list-style-type: none">• Hunting & Recreation Properties• Waterfront
Uplands / Wetlands:	3% Uplands (30% Normally Dry)
Soil Types:	Waccasassa-Demory and Gator-Terra Ceia in the forested portions
Taxes & Tax Year:	\$7597 for 2022
Zoning / FLU:	RES (Residential Environmentally Sensitive) 1 d.u. per 10 gross acres
Lake Frontage / Water Features:	Bird Creek, Withlacoochee River, Gulf of Mexico
Water Source & Utilities:	Private wells (7 on property), Electric installed
Road Frontage:	4/10 mile along both sides of Hwy 40 W (Follow That Dream Parkway)
Nearest Point of Interest:	Gulf of Mexico, Withlacoochee River, Waccasassa Bay, Crystal River, Goethe State Forest
Current Use:	Private Home & Recreation
Potential Recreational / Alt Uses:	Secluded Residence, Weekend Getaway, Bed & Breakfast, Fish Camp
Structures & Year Built:	1886 SF Home Built In 1970 (1598 SF Air-Conditioned) Multiple Aluminum Car Ports or Storage Barns Hunt/Fish Camp Cook Shed



LOCATION & DRIVING DIRECTIONS

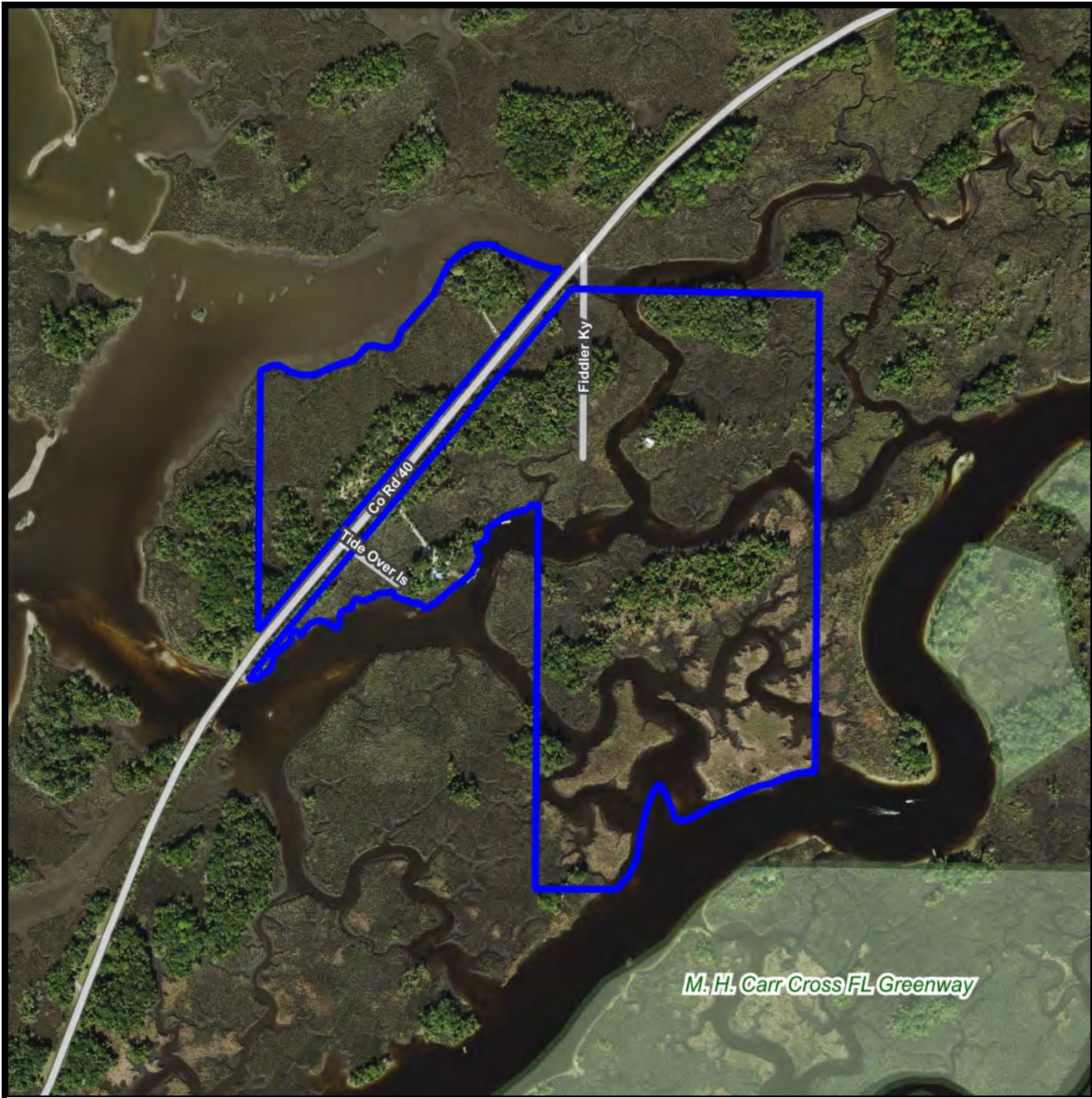
Parcel: 02303-000-00

GPS: 29.0106544, -82.7492319

Driving Directions: From downtown Inglis at US 19/98 and SR 40; Head west on 40 for 5.4 miles; Property is on both sides of the road

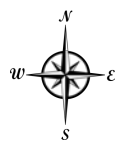
Showing Instructions: Contact Listing Agents



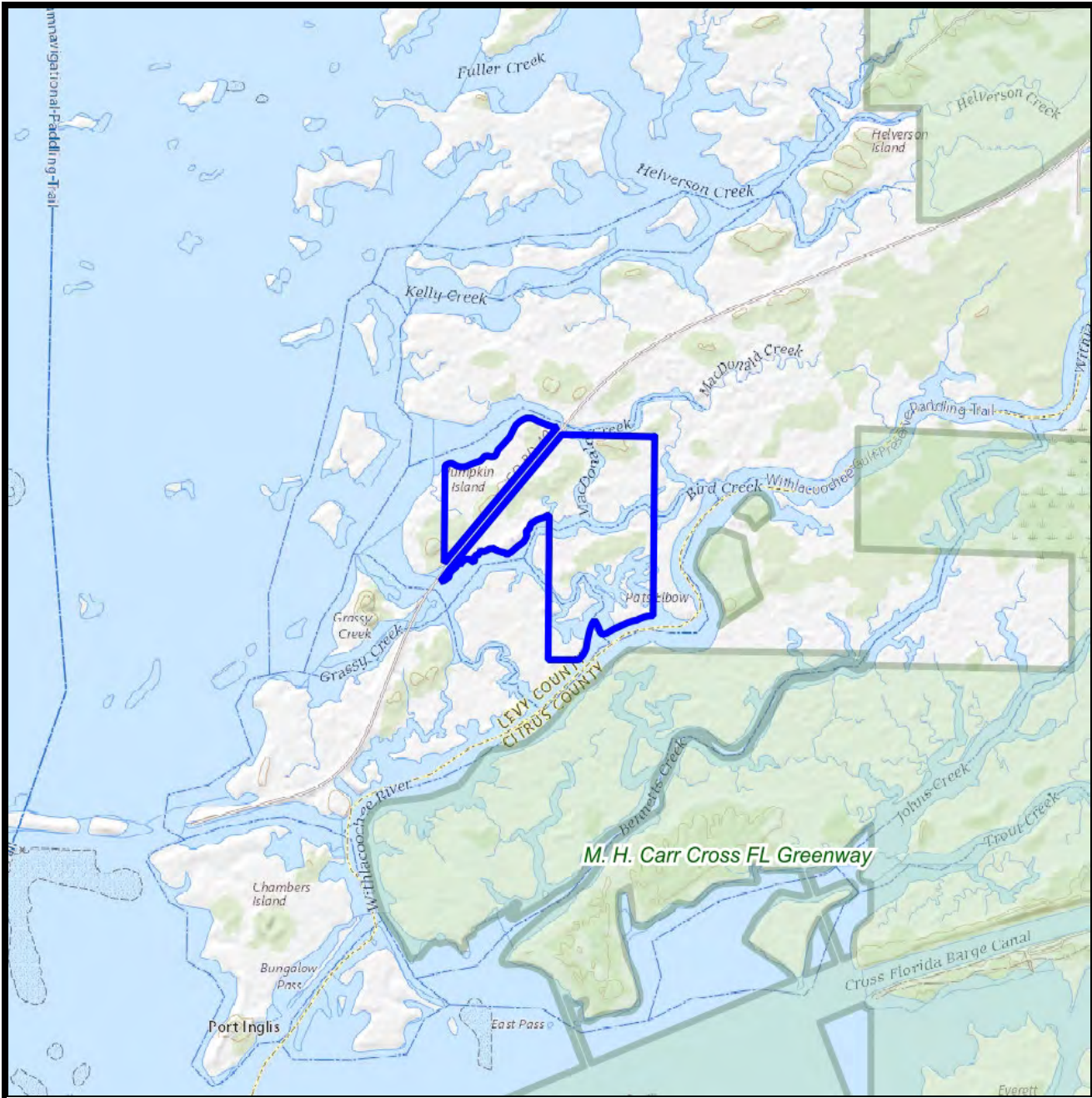


Aerial

- Polygons Drawing
- Lines Drawing
- Text Labels Drawing
- Points Drawing
- Streets MapWise
- Managed Lands FNAI



©2023 SVNIC. SVN | Saunders Ralston Dantzler Real Estate® is a registered trademark licensed to SVN Shared Value Network®. Any information displayed should be verified and is not guaranteed to be accurate by SVN Saunders Ralston Dantzler. You may not copy or use this material without written consent from SVN Saunders Ralston Dantzler.

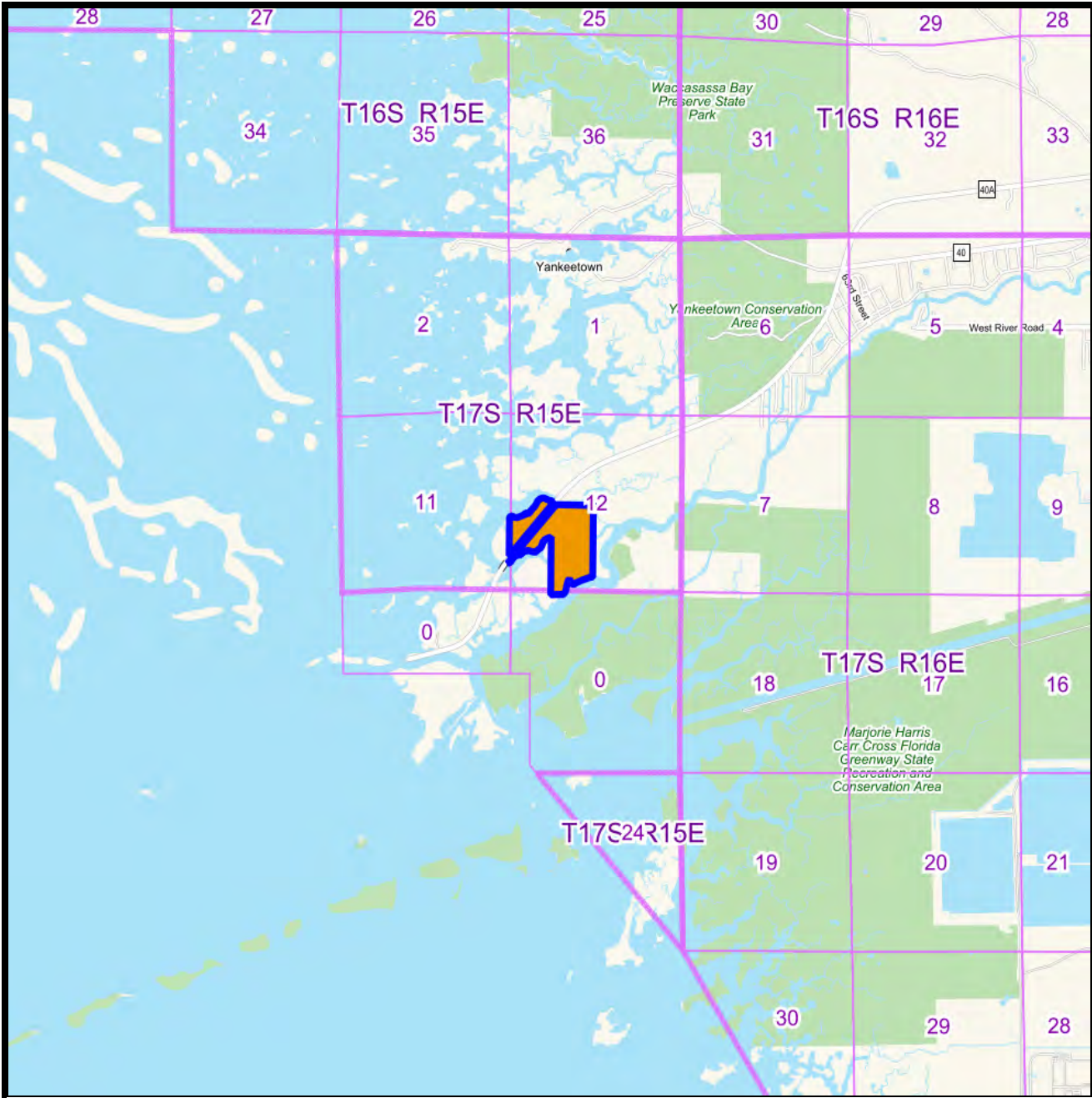


USGS Topo

- Polygons Drawing
- Lines Drawing
- Labels Drawing
- Points Drawing
- Managed Lands FNAI

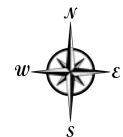


© 2023 SVNIC. SVN | Saunders Ralston Dantzler Real Estate® is a registered trademark licensed to SVN Shared Value Network®. Any information displayed should be verified and is not guaranteed to be accurate by SVN Saunders Ralston Dantzler. You may not copy or use this material without written consent from SVN Saunders Ralston Dantzler.



Vicinity

- Polygons Drawing
- Lines Drawing
- Labels Drawing
- Points Drawing
- ▭ Township and Range
- ▭ Township and Range
- ▭ Section Boundaries



©2023 SVNIC. SVN | Saunders Ralston Dantzler Real Estate® is a registered trademark licensed to SVN Shared Value Network®. Any information displayed should be verified and is not guaranteed to be accurate by SVN Saunders Ralston Dantzler. You may not copy or use this material without written consent from SVN Saunders Ralston Dantzler.



Photos











For more information visit SVNsaunders.com

HEADQUARTERS

1723 Bartow Road
Lakeland, Florida 33801
863.648.1528

ORLANDO

605 E Robinson Street, Suite 410
Orlando, Florida 32801
407.516.4300

NORTH FLORIDA

356 NW Lake City Avenue
Lake City, Florida 32055
352.364.0070

GEORGIA

218 W Jackson Street, Suite 203
Thomasville, Georgia 31792
229.299.8600

©2023 SVN | Saunders Ralston Dantzler Real Estate. All SVN® Offices Independently Owned and Operated SVN | Saunders Ralston Dantzler Real Estate is a full-service land and commercial real estate brokerage with over \$4 billion in transactions representing buyers, sellers, investors, institutions, and landowners since 1996. We are recognized nationally as an authority on all types of land, including agriculture, ranch, recreation, residential development, and international properties. Our commercial real estate services include property management, leasing and tenant representation, valuation, business brokerage, and advisory and counseling services for office, retail, industrial, and multifamily properties. Our firm also features an auction company, forestry division, international partnerships, hunting lease management, and extensive expertise in conservation easements. Located in Florida and Georgia, we provide proven leadership and collaborative expertise backed by the strength of the SVN® global platform.

