



Intermountain Realty, Inc.

Rock Creek Property

Own a piece of Eastern Oregon history. Home of the former Rock Creek Power Plant, the property consists of 78+/- timbered acres just off South Rock Creek Road at the base of the Elkhorn Range of the Blue Mountains. Approximately 18 miles from Baker City and 6 miles west of Haines. Enjoy hiking, hunting, snowmobiling right out the back door. Live water, pond and a variety of wildlife with accessible sloped terrain. The property would make an ideal weekend retreat or the perfect residence for those wanting to live out of town, featuring a modest home consisting of 2 BR, 1 BA on main level and 2 BR, 1 BA in lower level.



The Property

Location:

*12840 S Rock Creek Lane
Haines, OR 97833*

County: Baker County

Property Taxes (2023): \$2,061.66

Lot Size: 78.35 acres m/l

Offered at \$750,000

For additional information contact:

INTERMOUNTAIN REALTY, INC.

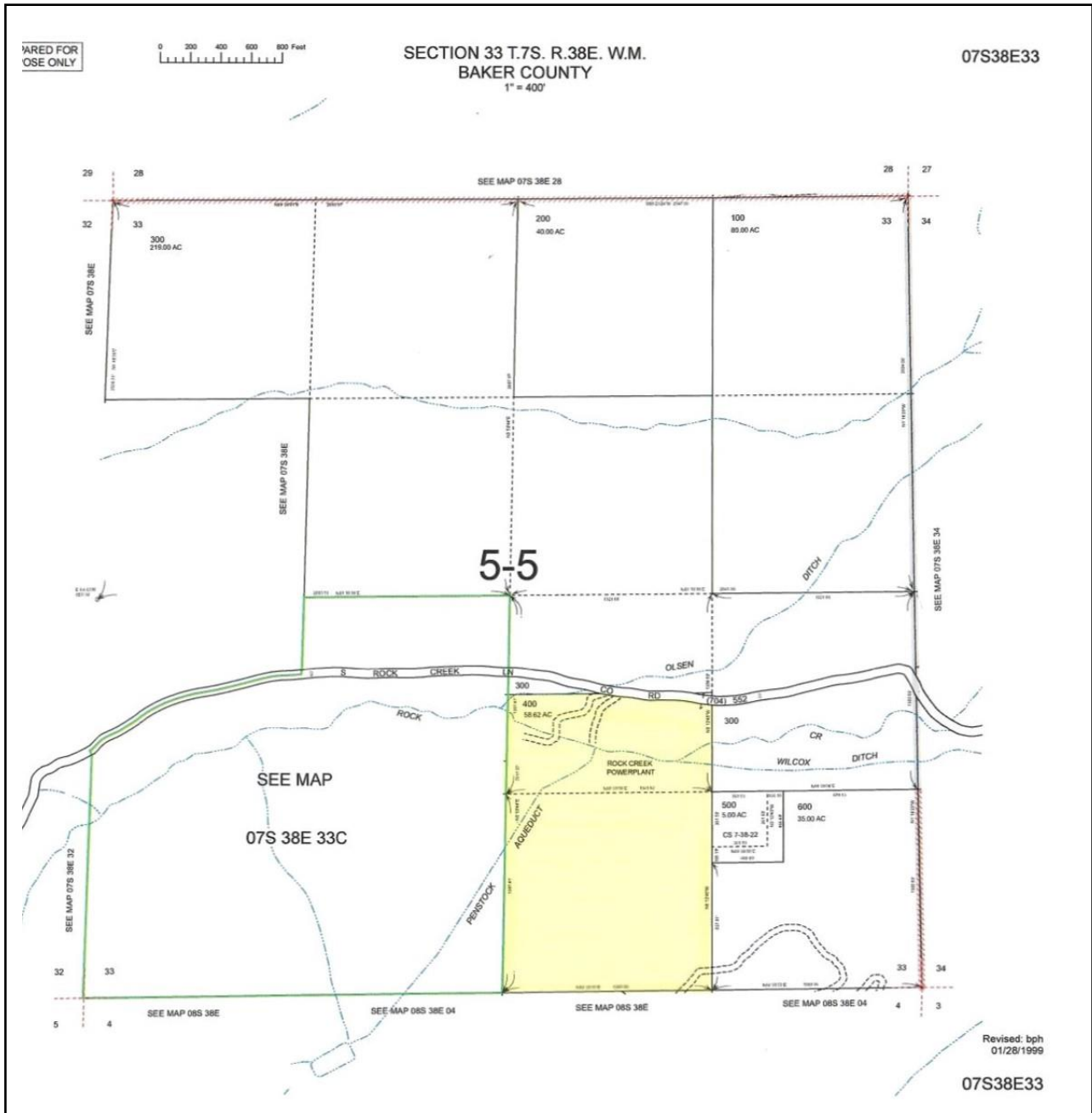
1425 Campbell Street, Baker City, OR 97814

Office: 541.523.4434

Email: info@intermountainland.com

** All information furnished is from sources deemed reliable and is published subject to errors, omissions, changes of conditions, terms, price or withdrawal without notice.*

Rock Creek Property



* All information furnished is from sources deemed reliable and is published subject to errors, omissions, changes of conditions, terms, price or withdrawal without notice.



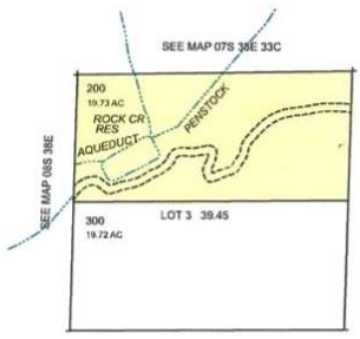
SECTION 4 T.8S. R.38E. W.M.
BAKER COUNTY
1" = 400'

08S38E04

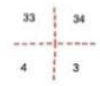
Cancelled
100

33

4

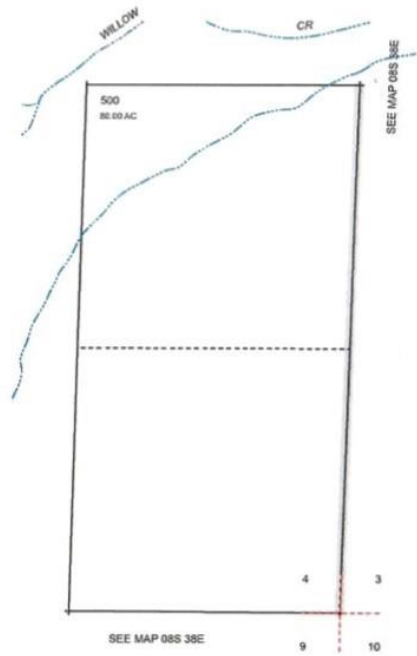


SEE MAP 07S 38E 33



5-5

SEE MAP 08S 38E



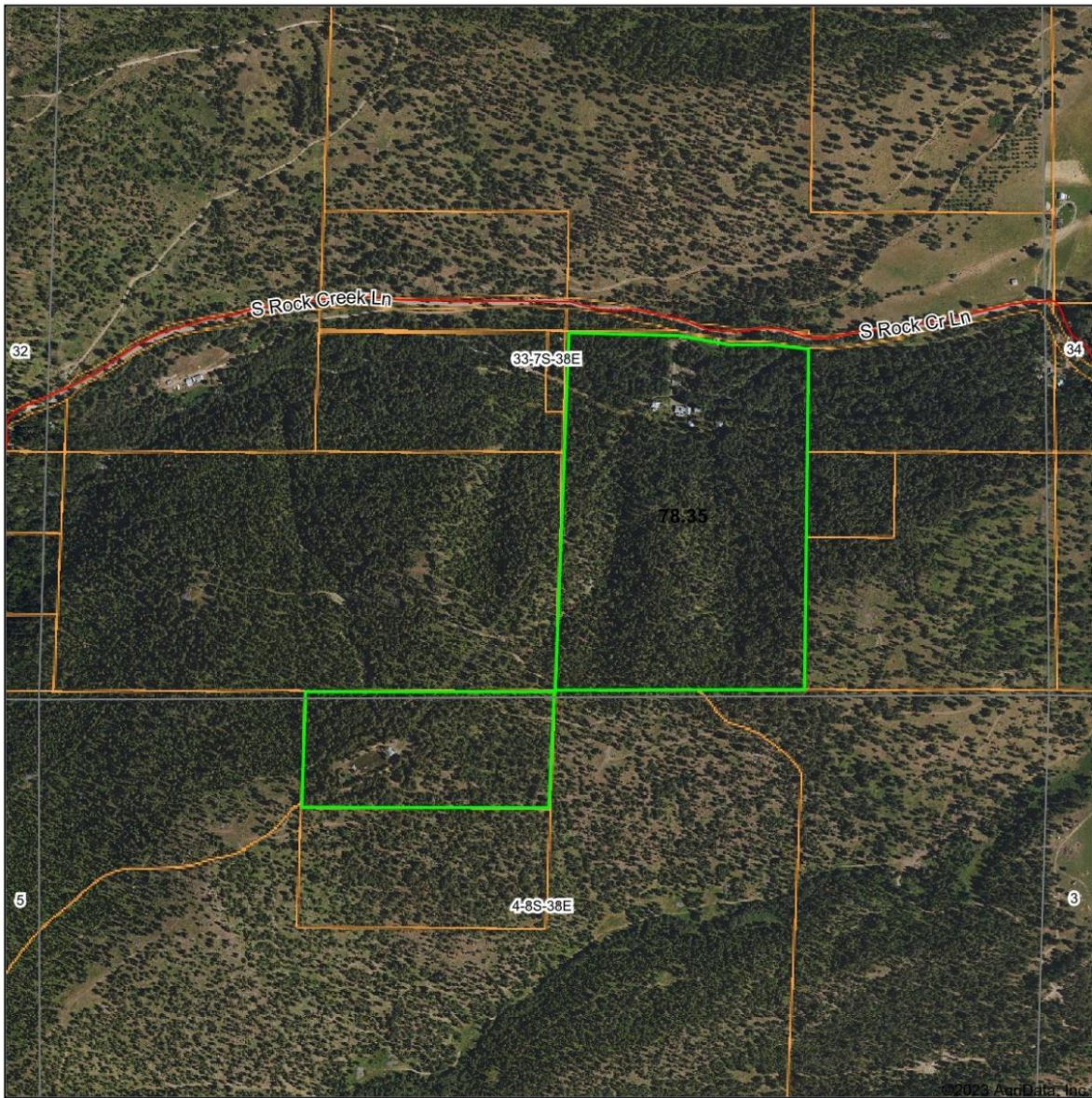
SEE MAP 08S 38E

Revised: MA
09/17/2018

08S38E04

* All information furnished is from sources deemed reliable and is published subject to errors, omissions, changes of conditions, terms, price or withdrawal without notice.

Aerial Map



Map Center: 44° 54' 25.58, -118° 3' 53.16

0ft 852ft 1703ft


Intermountain
Realty, Inc.

Maps Provided By:

surety®
CUSTOMIZED ONLINE MAPPING
© AgriData, Inc. 2023 www.AgrIDataInc.com

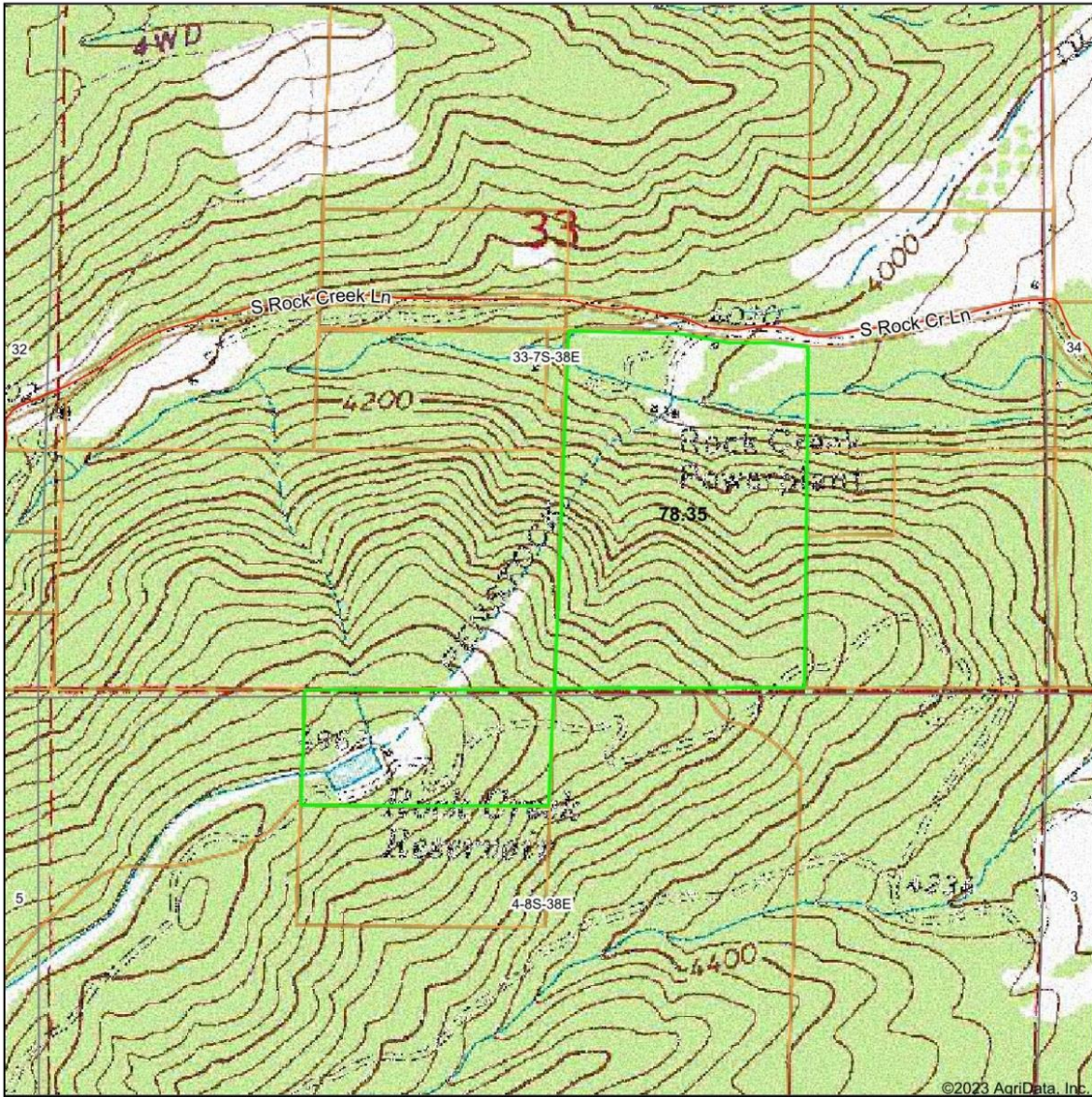
33-7S-38E
Baker County
Oregon



9/27/2023

** All information furnished is from sources deemed reliable and is published subject to errors, omissions, changes of conditions, terms, price or withdrawal without notice.*

Topography Map



©2023 AgriData, Inc.

Map Center: 44° 54' 25.58, -118° 3' 53.16

0ft 852ft 1703ft


Intermountain
Realty, Inc.

Maps Provided By:

CUSTOMIZED ONLINE MAPPING
© AgriData, Inc. 2023 www.AgriDataInc.com

33-7S-38E
Baker County
Oregon



9/27/2023

* All information furnished is from sources deemed reliable and is published subject to errors, omissions, changes of conditions, terms, price or withdrawal without notice.