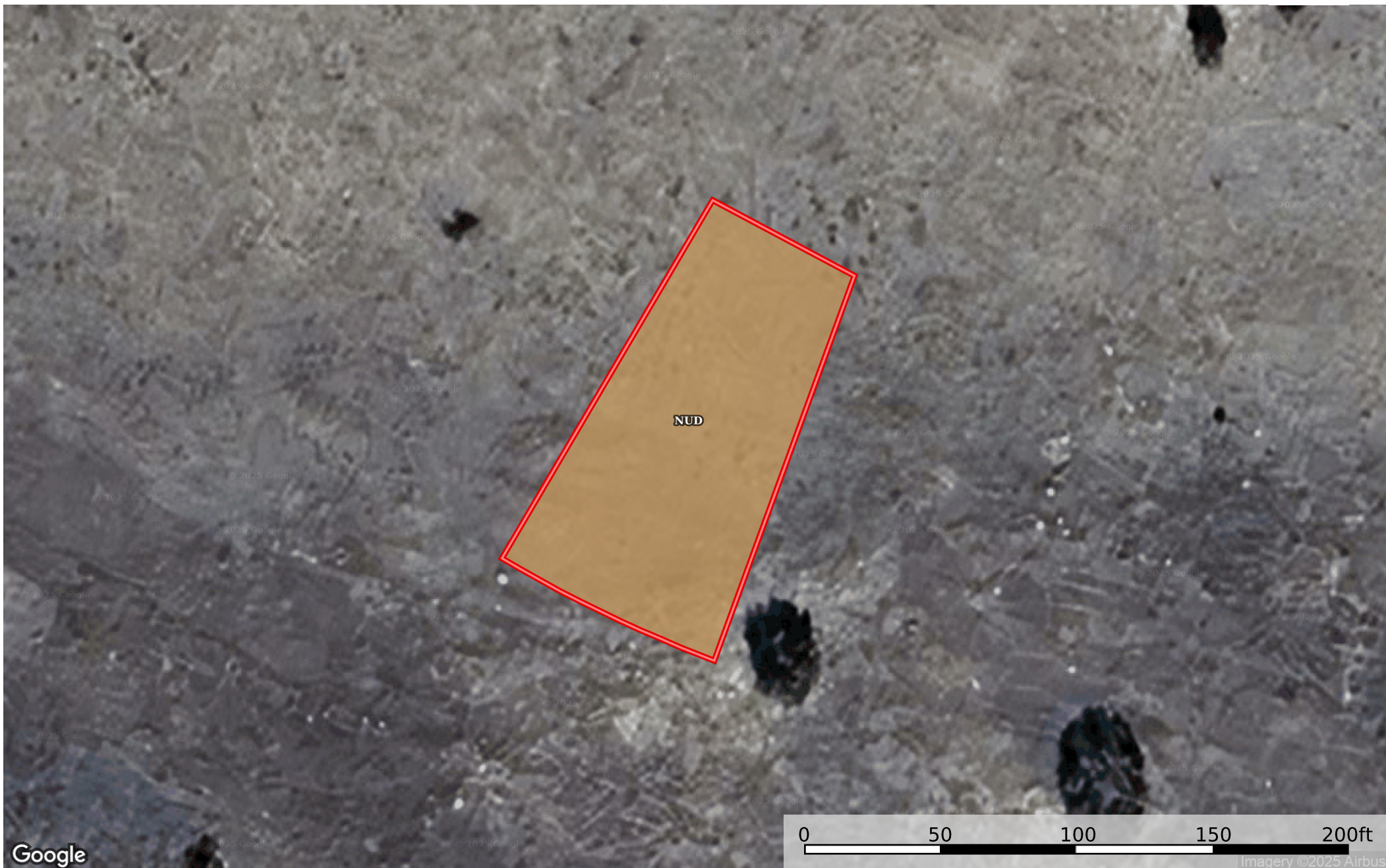


0.26 Acre Colorado City, Pueblo County, CO 4715413193
Pueblo County, Colorado, 0.26 AC +/-



 Boundary

Boundary 0.25 ac

SOIL CODE	SOIL DESCRIPTION	ACRES	%	CPI	NCCPI	CAP
NuD	Nunn clay loam, 3 to 9 percent slopes	0.25	100	0	36	6e
TOTALS		0.25(*)	100%	-	36.0	6

(*) Total acres may differ in the second decimal compared to the sum of each acreage soil. This is due to a round error because we only show the acres of each soil with two decimal.

