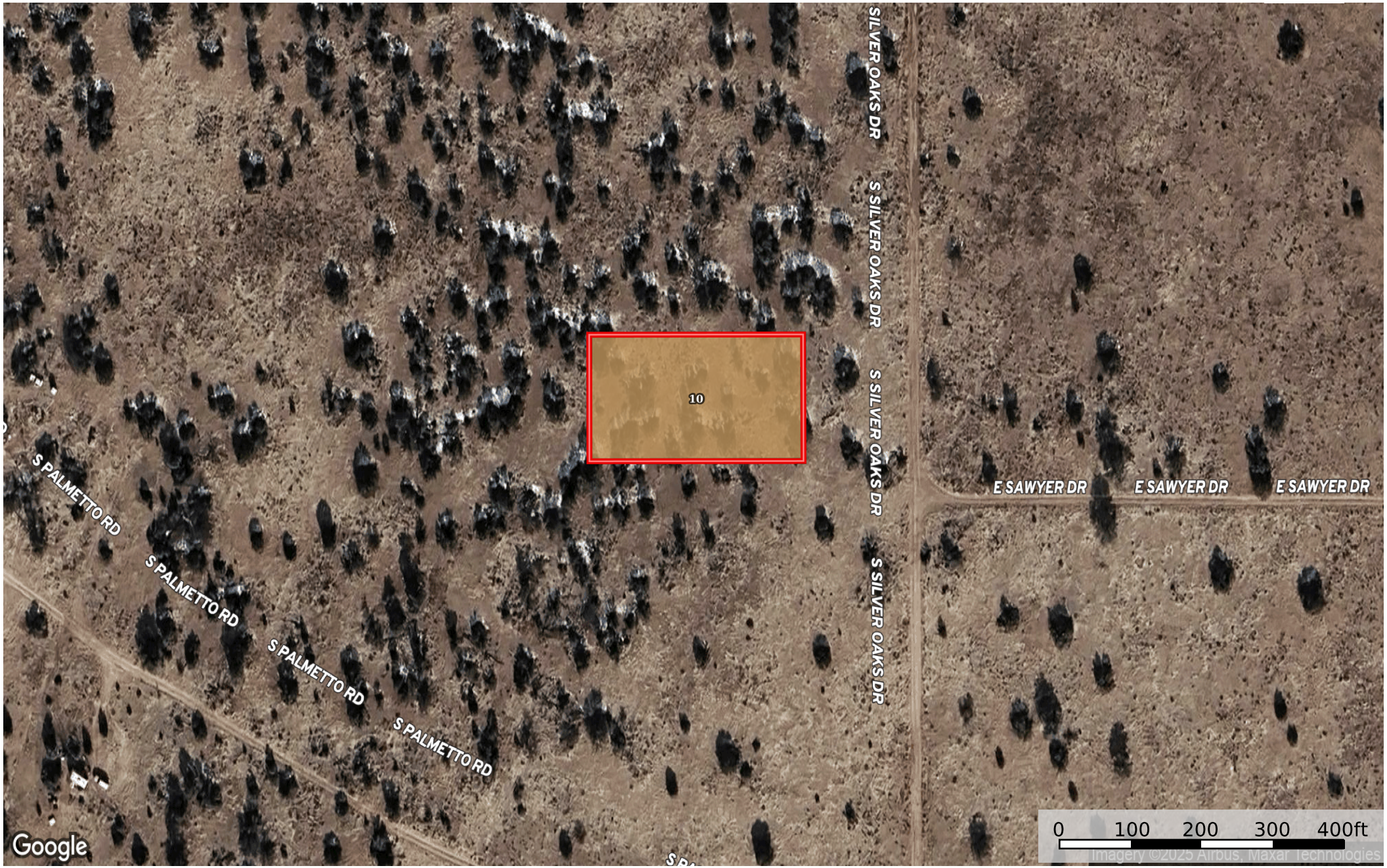


1.03 Acres Williams, Coconino County, AZ 501-60-030
Coconino County, Arizona, 1.03 AC +/-



 Boundary

Boundary 1.04 ac

| SOIL CODE | SOIL DESCRIPTION | ACRES | % | CPI | NCCPI | CAP |
|-----------|---|---------|------|-----|-------|-----|
| 10 | Deama gravelly loam, 2 to 15 percent slopes | 1.04 | 100 | 0 | 13 | 6s |
| TOTALS | | 1.04(*) | 100% | - | 13.0 | 6 |

(*) Total acres may differ in the second decimal compared to the sum of each acreage soil. This is due to a round error because we only show the acres of each soil with two decimal.

