



LAKE LIZZIE PASTURE

RANCH LAKE ROAD
BARTOW, FL 33830

Clay Taylor, ALC
C: 863.224.0835
clay.taylor@svn.com

Daniel Lanier
C: 863.698.2971
daniel.lanier@svn.com

Property Overview



Sale Price **\$1,990,000**

OFFERING SUMMARY

Acreage: **241 Acres**
Price / Acre: \$8,257
City: Bartow
County: Polk
Property Type: Pasture, Ranch,
Agriculture, Recreation,
Land Investment

PROPERTY OVERVIEW

The Lake Lizzie Pasture is a unique property located south east of Bartow, just minutes away from many Central Florida cities. This property has a nice mix of upland improved pastures along with scrub woods and 125 +/- feet of lake frontage on Lake Lizzie. The improved pastures are planted in bahia and other native grasses along with scattered trees, making it perfect to graze cattle and horses. There are many recreational possibilities as well such as hunting deer, hogs, turkey, dove, ducks, fishing or riding atvs.

Specifications & Features



SPECIFICATIONS & FEATURES

Land Types:	Ranch
Lake Frontage / Water Features:	125+/- Feet of frontage on Lake Lizzie
Fencing:	Barbed wire
Current Use:	Cattle Ranch
Grass Types:	Bahia and other native grasses
Potential Recreational / Alt Uses:	Hunting, fishing, atvs, equestrian trail riding.
Land Cover:	Bahia and other native grasses along with scrub oaks and palmettos.
Main Infrastructure:	Barbed wire fenced and cross fenced

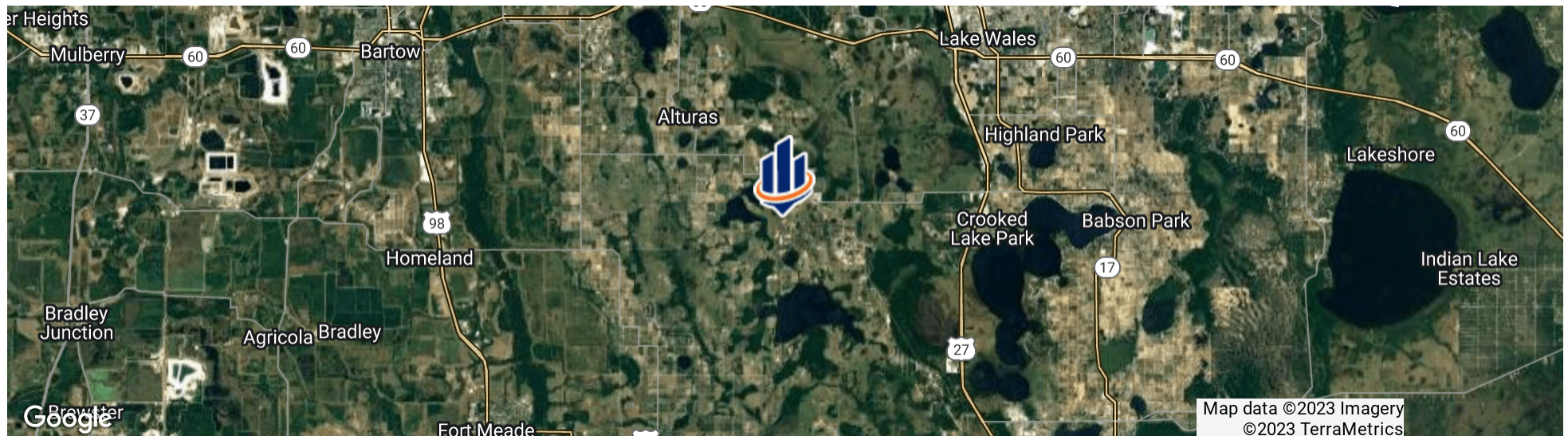


LOCATION & DRIVING DIRECTIONS

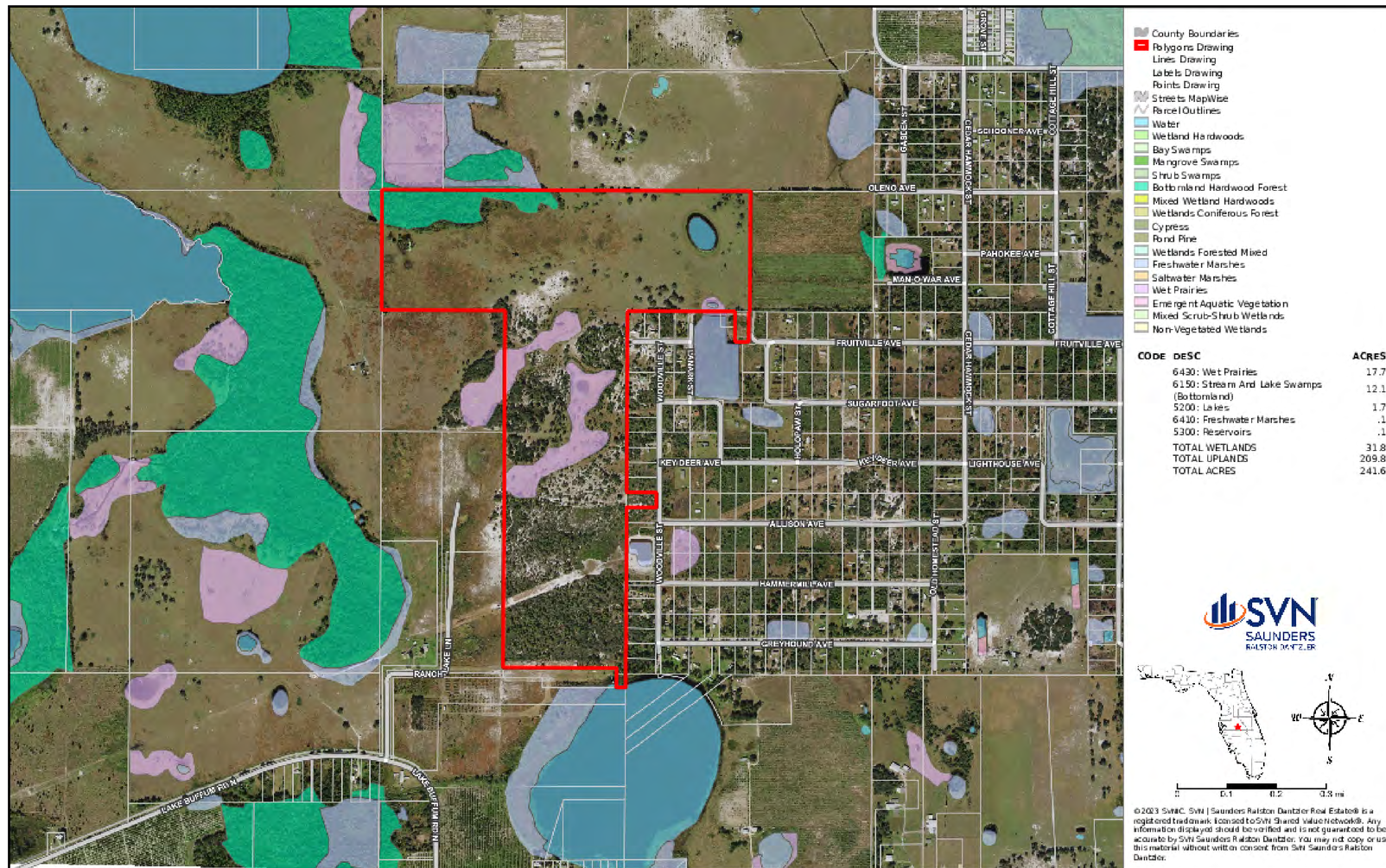
Parcel: 263036000000013000
263036000000023110
263101000000031050
263036000000014110

GPS: 27.8311864, -81.6731754

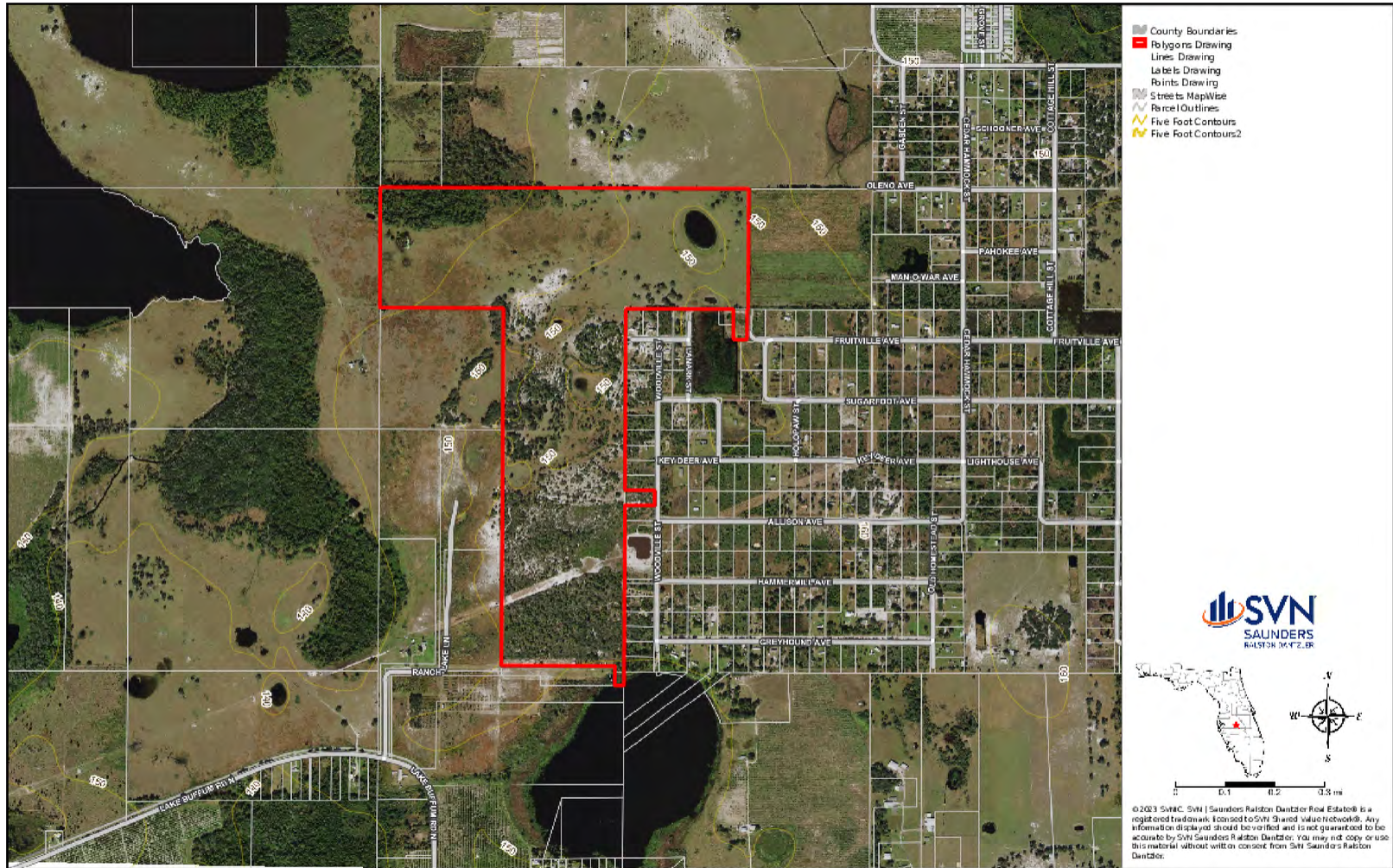
- Driving Directions:
- From US 27 in Lake Wales go west on Alturas Babson Park Cut-Off Rd 4.7 miles to Cedar Hammock Dr
 - Go south .6 miles to Fruitville Ave



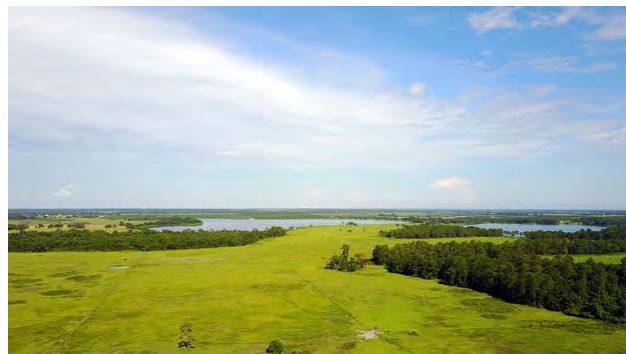
Wetlands Map



Elevation Map



Additional Photos





POLK COUNTY FLORIDA

Founded	1861	Density	386.5 [2019]
County Seat	Bartow	Population	787,404 [2022]
Area	1,875 sq. mi.	Website	polk-county.net

In Florida, Polk County is a leading contributor to the state's economy and politics. Concerning the local economy, industries like citrus, cattle, agriculture, and phosphate have all played extremely vital roles in Polk County. An increase in tourist revenue has also significantly contributed to the county's economic growth in recent years. As the heart of Central Florida, Polk County's location between the Tampa and Orlando Metropolitan Areas has aided in the development and growth of the area. Residents and visitors alike are drawn to the unique character of the county's numerous heritage sites, cultural venues, stunning natural landscapes, and plentiful outdoor activities.



For more information visit www.SVNsaunders.com

HEADQUARTERS

1723 Bartow Rd
Lakeland, FL 33801
863.648.1528

ORLANDO

605 E Robinson Street, Suite 410
Orlando, Florida 32801
386.438.5896

NORTH FLORIDA

356 NW Lake City Avenue
Lake City, Florida 32055
352.364.0070

GEORGIA

218 W Jackson Street, Suite 203
Thomasville, Georgia 31792
229.299.8600

©2023 SVN | Saunders Ralston Dantzler Real Estate. All SVN® Offices Independently Owned and Operated SVN | Saunders Ralston Dantzler Real Estate is a full-service land and commercial real estate brokerage with over \$3 billion in transactions representing buyers, sellers, investors, institutions, and landowners since 1996. We are recognized nationally as an authority on all types of land, including agriculture, ranch, recreation, residential development, and international properties. Our commercial real estate services include marketing, property management, leasing and tenant representation, valuation, business brokerage, and advisory and counseling services for office, retail, industrial, and multi-family properties. Our firm also features an auction company, forestry division, international partnerships, hunting lease management, and extensive expertise in conservation easements. Located at the center of Florida's I-4 corridor, we provide proven leadership and collaborative expertise backed by the strength of the SVN® global platform. To learn more, visit SVNsaunders.com.

