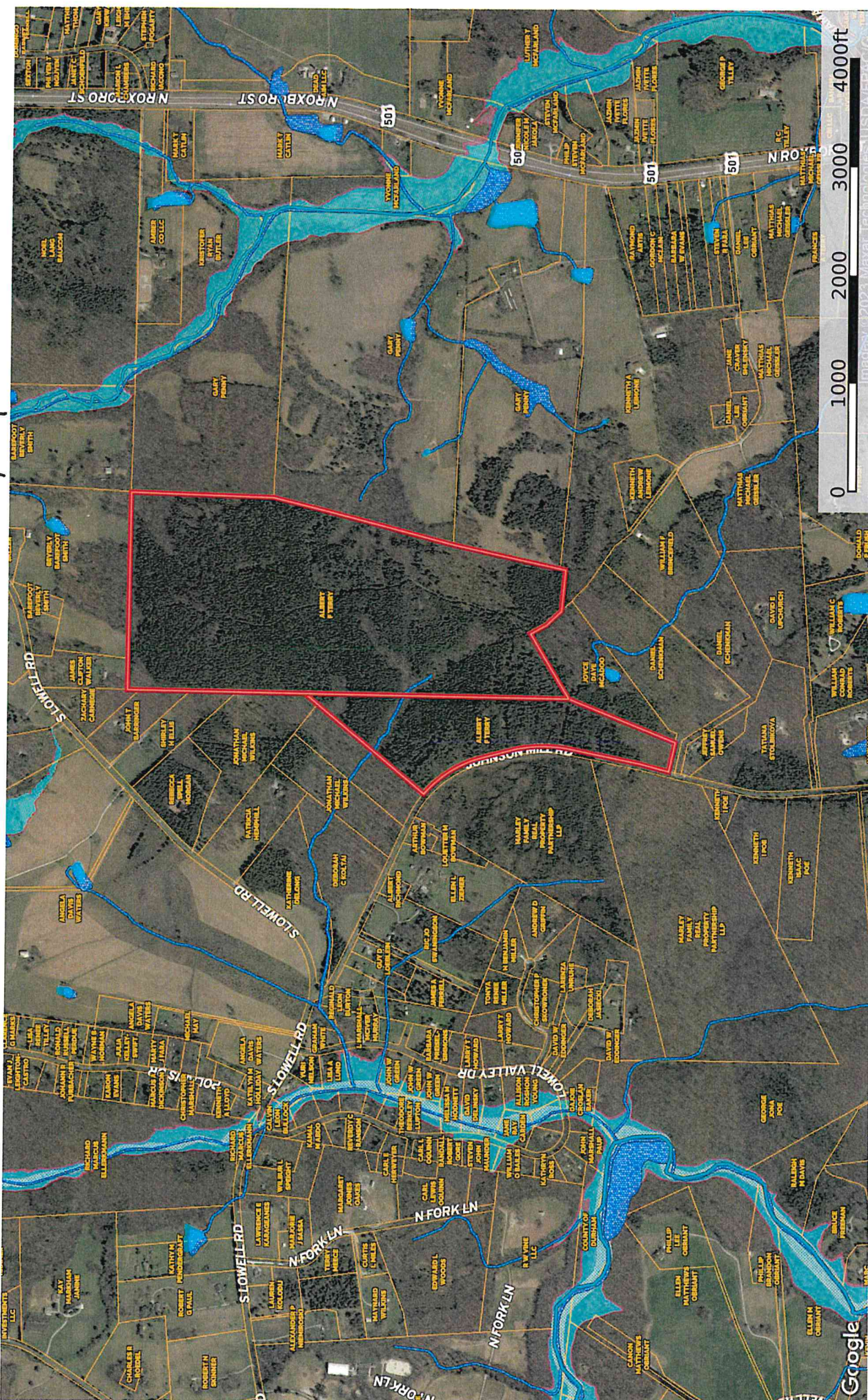


Flood Plain map
Property Not Flood Prone

8710 Johnson Mill Road
North Carolina, AC +/-



Legend:

- Boundary
- 100 Year Floodplain
- 500 Year Floodplain
- Floodway
- Special
- Unmapped/ Not Included
- Wetlands
- Riparian
- Stream, Intermittent
- River/Creek
- Water Body

Scale: 0 1000 2000 3000 4000ft

Google



Engineering and Environmental Services

Good morning,

These two sites (8639 & 8710 Johnson Mill Road) are located in the Neuse River Basin. I was able to locate several intermittent streams by looking at the NRCS Soils map for these two parcels. You can contest the mapped features by first contacting the delegated authority for this regulatory basin (NC DENR) and requesting an onsite determination and letter. The phone number to the Raleigh Regional Office of NC DENR is 919-791-4200. There is no fee that I am aware of for this service; however, you may be required to provide additional information.

Just for clarification purposes, my group (Durham County Engineering and Environmental Services) only has jurisdictional authority to make surface water determinations in the Cape Fear River Basin located outside Durham city limits.

Please send this determination report to Shelton Sullivan with the Division of Water Resources (DWR) at shelton.sullivan@ncdenr.gov or 919-707-3636.

**Any inquiries regarding section 404/401 permits should be directed to DWR (Central Office) at (919) 807-6300, and the USACE (Raleigh Regulatory Field Office) at (919) 554-4884. Central Office Website: [401 & Buffer Permitting Branch | NC DEQ](#)
Raleigh Office Website: [Raleigh Regional Office | NC DEQ](#)**

I hope you find the information helpful. Let me know if I can be of further assistance.

Kind Regards,

Travis Marion
STORMWATER TECHNICIAN



Engineering and
Environmental Services

Cell: (919) 316-8463
201 E. Main Street, 5th Floor
Durham, North Carolina 27701