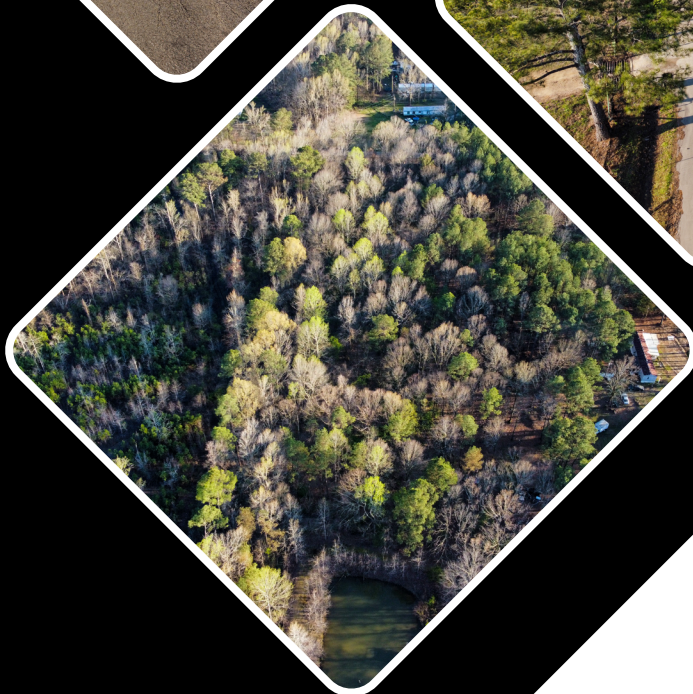
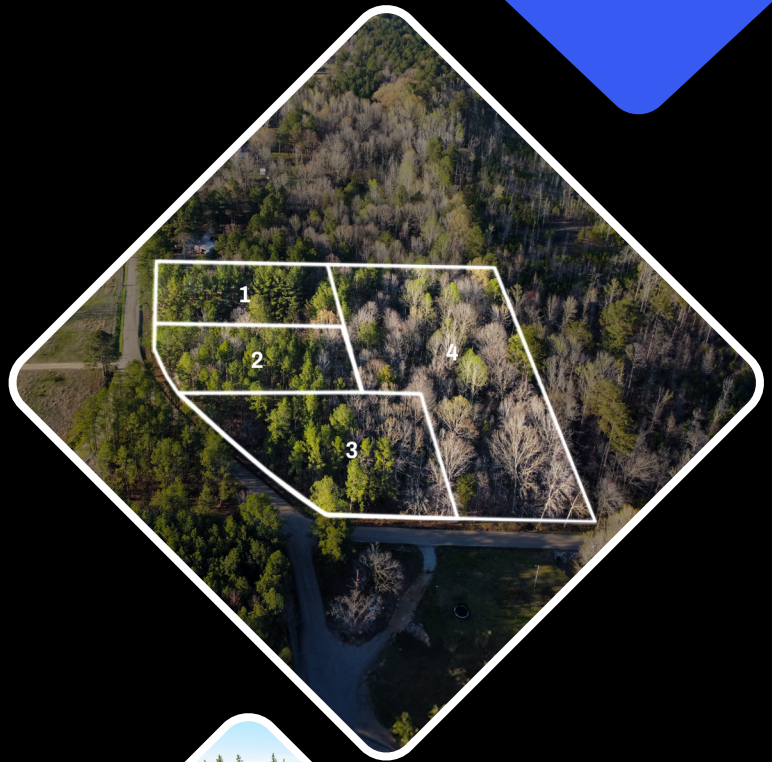


# Lee County Mississippi's **Tranquil Pine Estates**

Nestled in the serene landscapes of Lee County, Mississippi, these generous lots, ranging from 0.47 to 1.37 acres, provide an excellent opportunity to create your ideal retreat amidst nature's beauty, while remaining conveniently close to Nettleton and just a short drive from the lively city of Tupelo, offering the perfect balance of peacefulness and urban accessibility for your dream home or investment goals.



(970) 829-8580



[howdy@debroslan.com](mailto:howdy@debroslan.com)



[www.debroslan.com](http://www.debroslan.com)

**ACREAGE SIZES:**  
0.47 - 1.37 +/-

**STATE:**  
MISSISSIPPI

**COUNTY:**  
LEE

**NEAREST CITY:**  
NETTLETON



**County:**  
Lee, MS



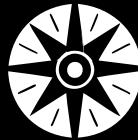
**Trash:**  
Yes



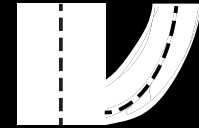
**Elevation:**  
290' - 310'



**Zoning:**  
N/A



**Coordinates:**  
34.118890 °  
-88.570760 °



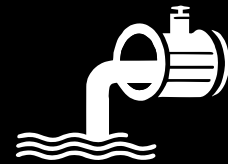
**Access:**  
Paved Road



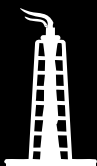
**Power:**  
Yes



**Water:**  
Yes



**Sewage:**  
Requires Septic



**Gas:**  
Alternative - Propane



**Phone & Internet:**  
No



(970) 829-8580

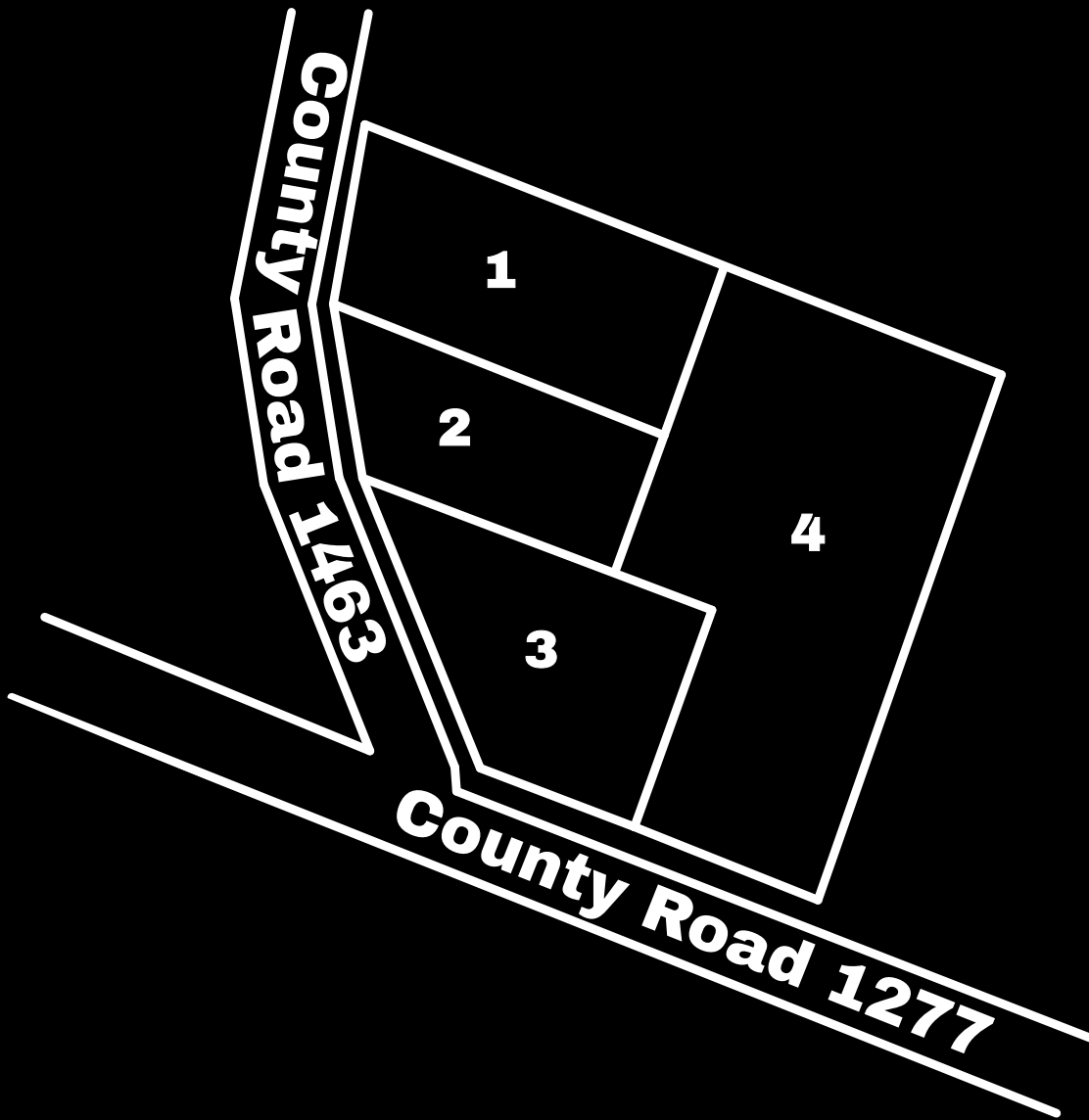


howdy@debrosland.com



www.debrosland.com

# Lee County Mississippi's Whispering Pines Estates



Lot ID	Size
Lee_01_MS	0.64
Lee_02_MS	0.47
Lee_03_MS	0.60
Lee_04_MS	1.37



(970) 829-8580



[howdy@debrosland.com](mailto:howdy@debrosland.com)



[www.debrosland.com](http://www.debrosland.com)



## Utility Information:

---

### Power Information:

Tombigbee EPA  
(662) 842-7635

### Trash Information:

Three Rivers Solid Waste Management  
662-489-2415

### Water Information:

Cason Water District  
(662) 256-2442

### Phone & Internet Information:

BellSouth; Operated by AT&T: <https://www.att.com/>  
800.288.2020

Frontier: <https://internet.frontier.com/>  
1-855-885-5528

Tombigbee Fiber: <https://www.tombigbeefiber.com/>  
(877) 342-3728

## County Information:

---

### Assessor's Office:

<https://leecountyms.com/tax-assessor/>  
(662) 841-9030

### Clerk and Recorder's Office:

<https://leecountyms.com/chancery-clerk/>  
(662) 432-2100

### Treasurer's Office:

<https://leecountyms.com/tax-collectors-office/>  
(662) 432-2200

### Disclosure Statement:

*DeBrosland, its managers, employees and all other affiliates do lengthy research on all properties prior to listing them, in all cases we have not seen the property. All prospective buyers are encouraged to conduct their own due diligence to verify the information provided is accurate and contact the county to confirm that whatever plans you as the buyer have for the property in question are in fact legal, feasible and permitted to your satisfaction. We make no warranties or representations about the land, its condition, or what can be done with the property. Due diligence is encouraged but is the buyer's responsibility and all sales are final. If you visit any of our properties, you are visiting at your own risk and release our company and all its managers, employees and other affiliates from any and all claims or liabilities. To see a full list of our disclosure statement and other notices please visit our [Terms & Conditions](#).*