

+ -167.77 Acres For Sale

901 Bolt Road Gray Court, SC 29645



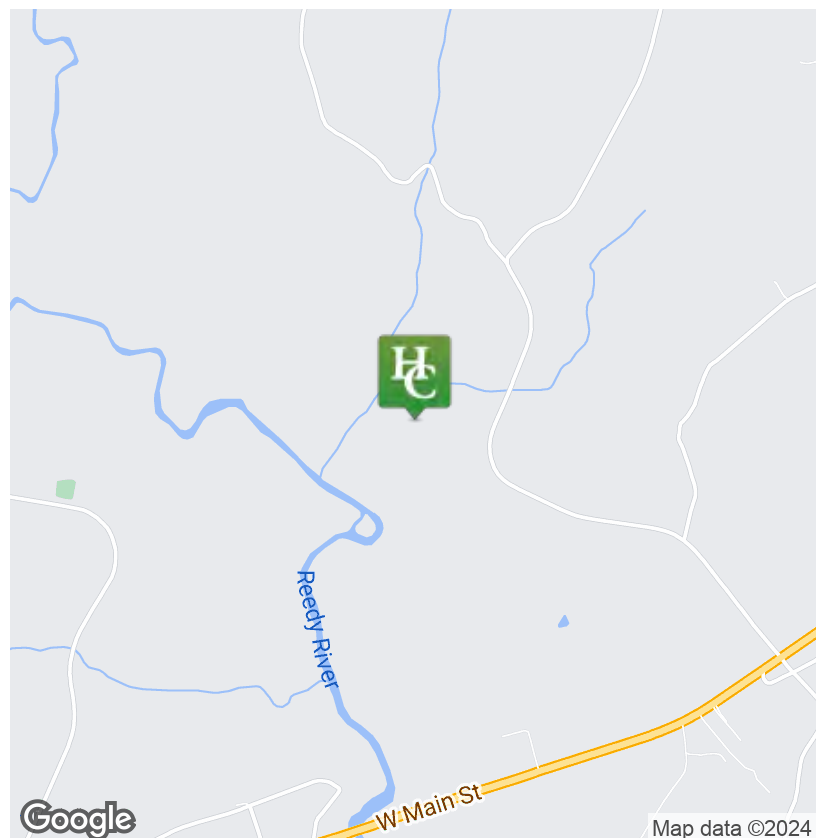
REDUCED: \$1,995,624



Lonesome Dove Farm Drone Video: <https://vimeo.com/928012281?share=copy>

Property Features

- Asking Price: \$11,895/acre
- +-13 acre stocked pond that includes a +-3 acre beaver pond
- +- 1 acre stocked drainage pond
- +-0.5 miles of Reedy River Frontage
- A majority of the timber consists of hardwood that was cut 40+ years ago with some areas of mature pine and hardwood
- Several nice food plots including a +-3 acre field that has been planted for doves in the past
- Excellent hunting and fishing opportunities
- An extensive and well maintained system of roads and interior trails
- 900SF cabin, two pole barns, and a shed
- Located +-24 miles from downtown Greenville (+-40 minute commute)



✉ Rusty Hamrick
+1 864 232 9040
rhamrick@naearlefurman.com

No Warranty Or Representation, Express Or Implied, Is Made As To The Accuracy Of The Information Contained Herein, And The Same Is Submitted Subject To Errors, Omissions, Change Of Price, Rental Or Other Conditions, Prior Sale, Lease Or Financing, Or Withdrawal Without Notice, And Of Any Special Listing Conditions Imposed By Our Principals No Warranties Or Representations Are Made As To The Condition Of The Property Or Any Hazards Contained Therein Are Any To Be Implied.

📍 101 E Washington St
Greenville, SC 29601
naearlefurman.com

Property Description

901 Bolt Road Gray Court, SC 29645



Property Overview

Located along the Reedy River less than a mile from the Greenville/Laurens County line, Lonesome Dove Farm presents a very rare opportunity for the outdoor enthusiast looking for the best hunting and recreational property on the market in the piedmont region of South Carolina. The centerpiece of the property is a picturesque thirteen acre stocked pond with a well-manicured 200 yard dam. Beavers have dammed up a three acre section at the upper end establishing quality waterfowl habitat and the pond has a rich history of trophy largemouth as well. Several nice food plots (currently in a mixture of clover and oats) are located along the property's half a mile of river frontage including a three acre dove field.

Much of the property consists of hardwood cut approximately 40 years ago and some additional timber stands are made up of mature hardwood and pine. Along the southern boundary line, a beautiful hardwood ridge stretches down to a wide creek bottom further enhancing the diversity of the wildlife habitat. The deer and turkey populations are strong along this stretch of the Reedy and Lonesome Dove presents opportunities at trophy bucks and longbeards each season. An extensive and well-maintained system of internal roads and trails are in place as well catering to easy access to the deer stands and food plots.

The cabin is located a quarter mile off Bolt Road and the entrance is quite unassuming, offering an excellent sense of privacy. This low maintenance structure is in solid condition, and it has been used by the current owners for many years for overnight hunting and fishing trips. The large front wooden porch is ideal for outdoor dining, relaxing after a long hunt, or evening festivities including horseshoes and an ax throwing board. Two pole barns and a shed with work benches provide ample storage for tractors, implements, deer stands, jon boats, off road vehicles, mowers, tools, and a 500 gallon diesel tank.

Lonesome Dove is the result of 40 years of land stewardship by dedicated owners with a passion for wildlife and the outdoors. This is truly a generational opportunity to acquire an irreplicable property with a convenient 40 minute commute to downtown Greenville.

Drone Photography

901 Bolt Road Gray Court, SC 29645



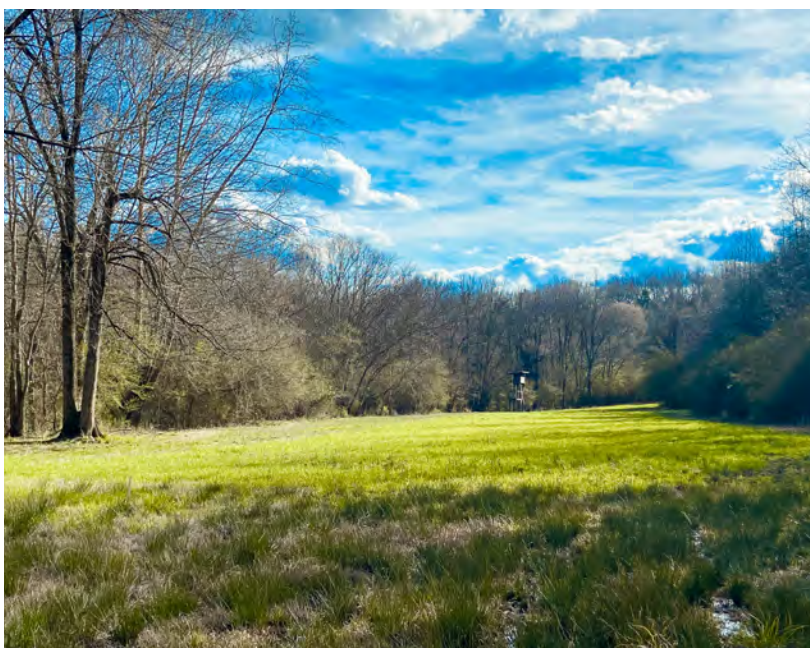
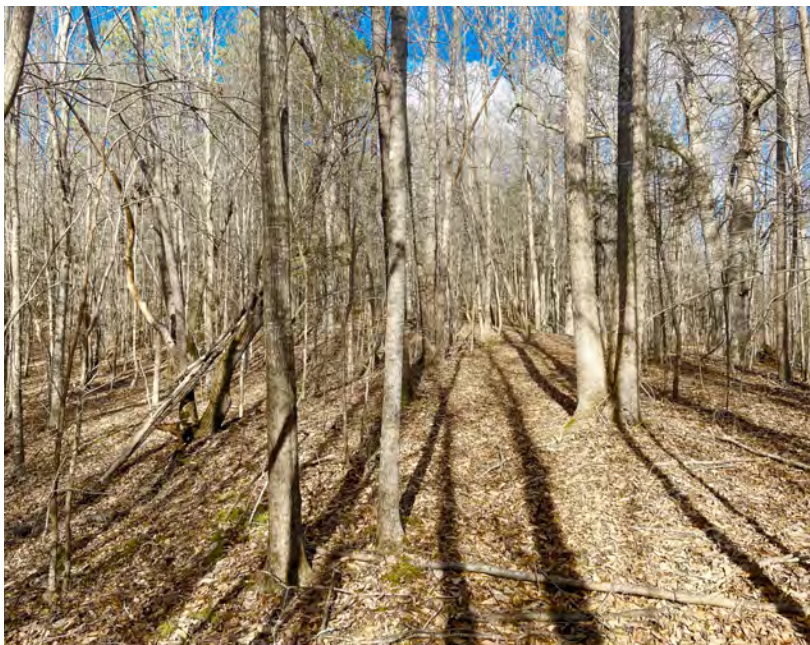
✉ Rusty Hamrick
+1 864 232 9040
rhamrick@naearlefurman.com

No Warranty Or Representation, Express Or Implied, Is Made As To The Accuracy Of The Information Contained Herein, And The Same Is Submitted Subject To Errors, Omissions, Change Of Price, Rental Or Other Conditions, Prior Sale, Lease Or Financing, Or Withdrawal Without Notice, And Of Any Special Listing Conditions Imposed By Our Principals No Warranties Or Rep- resentations Are Made As To The Condition Of The Property Or Any Hazards Contained Therein Are Any To Be Implied.

📍 101 E Washington St
Greenville, SC 29601
naearlefurman.com

Property Photos

901 Bolt Road Gray Court, SC 29645



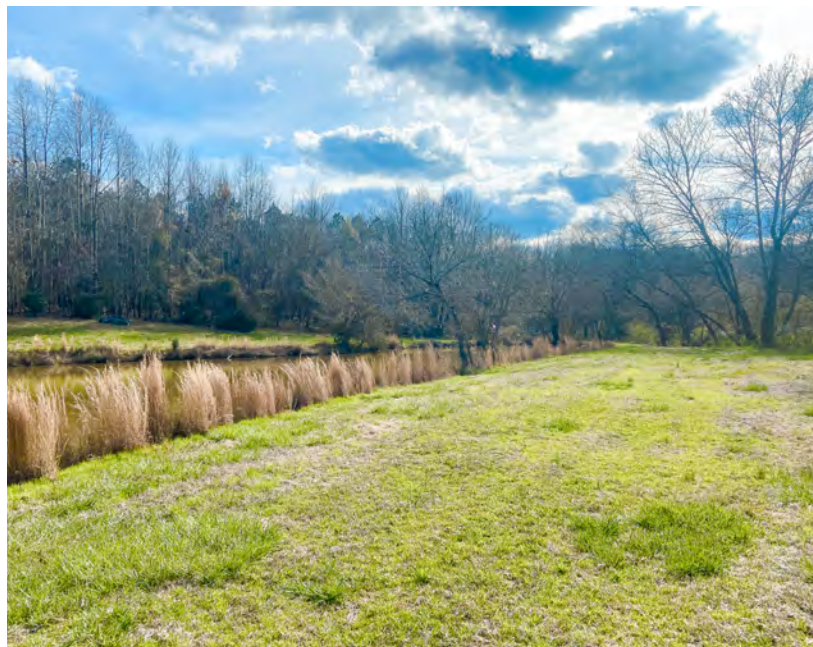
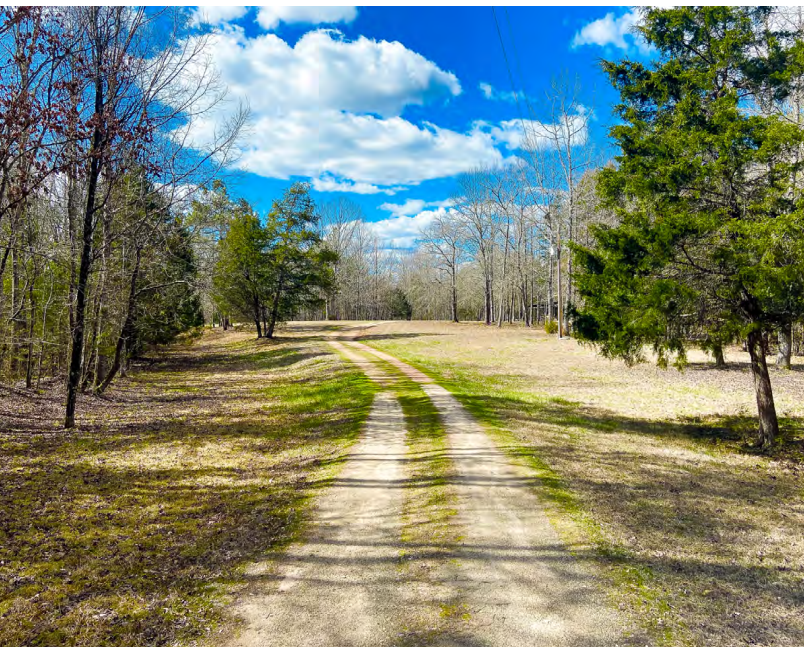
✉ Rusty Hamrick
+1 864 232 9040
rhamrick@naearlefurman.com

No Warranty Or Representation, Express Or Implied, Is Made As To The Accuracy Of The Information Contained Herein, And The Same Is Submitted Subject To Errors, Omissions, Change Of Price, Rental Or Other Conditions, Prior Sale, Lease Or Financing, Or Withdrawal Without Notice, And Of Any Special Listing Conditions Imposed By Our Principals No Warranties Or Representations Are Made As To The Condition Of The Property Or Any Hazards Contained Therein Are Any To Be Implied.

📍 101 E Washington St
Greenville, SC 29601
naearlefurman.com

Property Photos

901 Bolt Road Gray Court, SC 29645



✉ Rusty Hamrick
+1 864 232 9040
rhamrick@naiearlefurman.com

No Warranty Or Representation, Express Or Implied, Is Made As To The Accuracy Of The Information Contained Herein, And The Same Is Submitted Subject To Errors, Omissions, Change Of Price, Rental Or Other Conditions, Prior Sale, Lease Or Financing, Or Withdrawal Without Notice, And Of Any Special Listing Conditions Imposed By Our Principals No Warranties Or Rep- resentations Are Made As To The Condition Of The Property Or Any Hazards Contained Therein Are Any To Be Implied.

📍 101 E Washington St
Greenville, SC 29601
naiearlefurman.com

Property Structures

901 Bolt Road Gray Court, SC 29645



Interior Photos

901 Bolt Road Gray Court, SC 29645



