



# LAFFERTY GROVE

BUFFUM CHURCH ROAD  
FORT MEADE, FL 33841

Daniel Lanier  
C: 863.698.2971  
[daniel.lanier@svn.com](mailto:daniel.lanier@svn.com)

# Property Overview



**Sale Price**

**\$559,875**

## PROPERTY OVERVIEW

The Lafferty Grove is a well maintained citrus grove located between Fort Meade and Frostproof. This very productive citrus grove is planted in Valencia oranges and has been meticulously operated for many years. It is irrigated by a 10" well with a Caterpillar diesel engine. This grove would be a great addition to any citrus grower's operation or an excellent property to begin an investment in the Florida citrus industry.

## OFFERING SUMMARY

<b>Acreage:</b>	<b>44± Acres</b>
Price / Acre:	\$12,500
City:	Fort Meade
County:	Polk
Property Type:	Land: Citrus

# Specifications & Features



## SPECIFICATIONS & FEATURES

Land Types:	Citrus
Uplands / Wetlands:	99% Uplands
Soil Types:	Candler Sand Smyrna Sand Myakka Fine Sand
Current Use:	Productive Citrus Grove
Wells Information:	One 10" well powered by a Cat diesel engine
Irrigation:	Microjet irrigation that waters the entire grove at once

# Location



## LOCATION & DRIVING DIRECTIONS

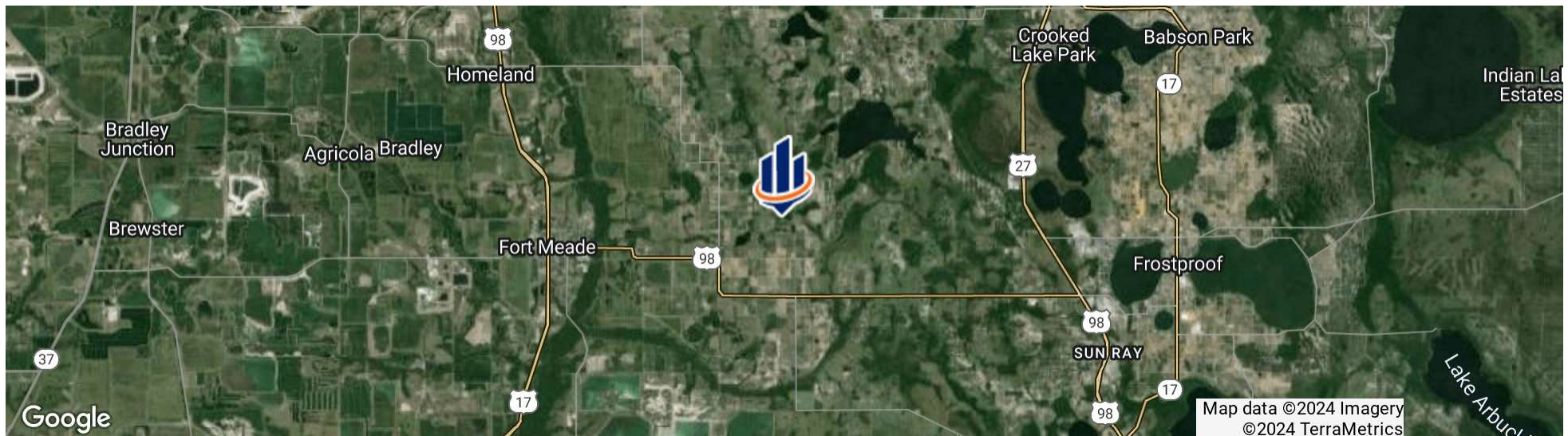
Parcel:

GPS: 27.7611774, -81.6998573

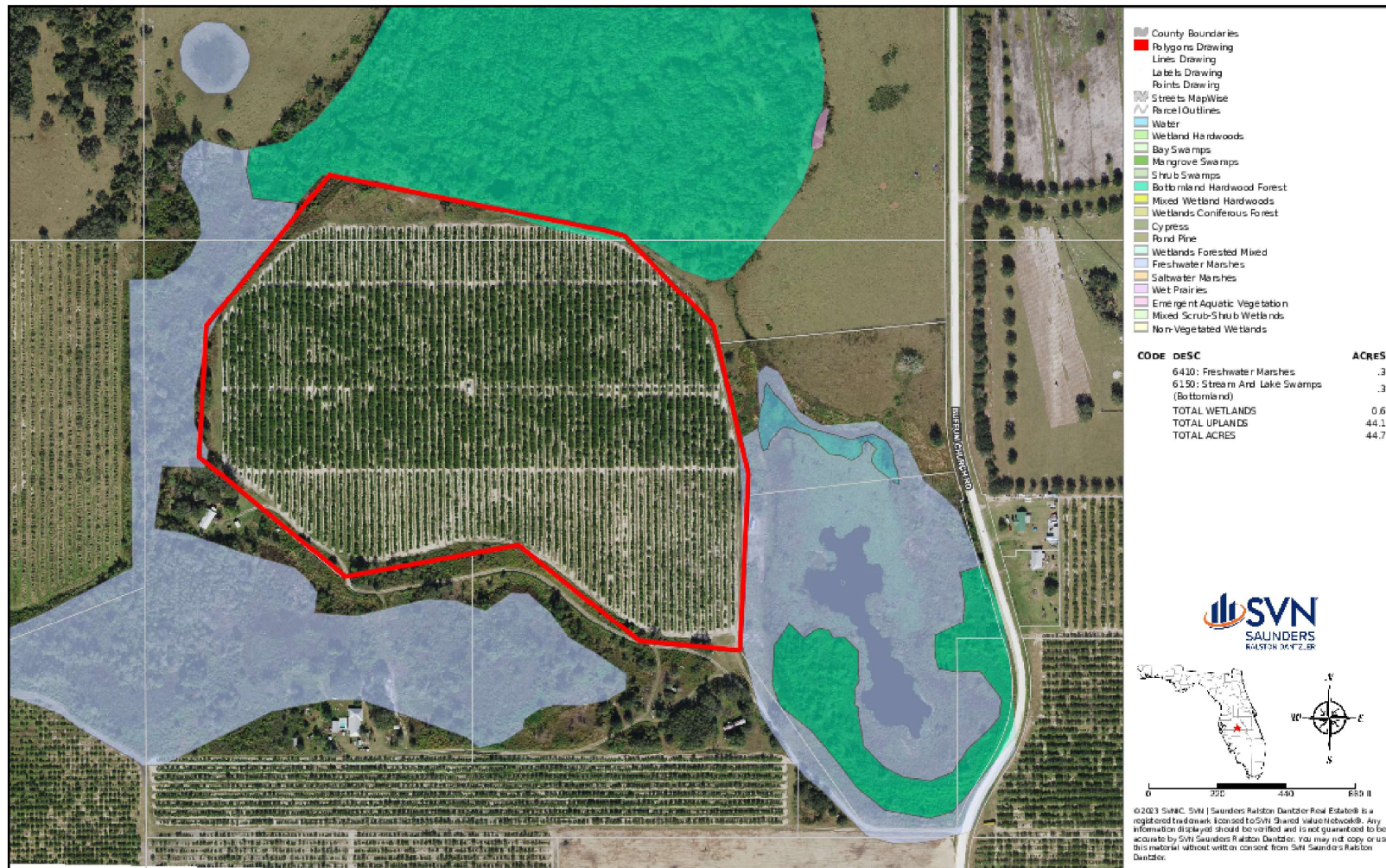
Driving Directions:

- Go east from Fort Meade on US 98 7.6 miles
- Turn north onto Buffum Church Road
- Go North 1.6 miles and turn west onto the dirt drive

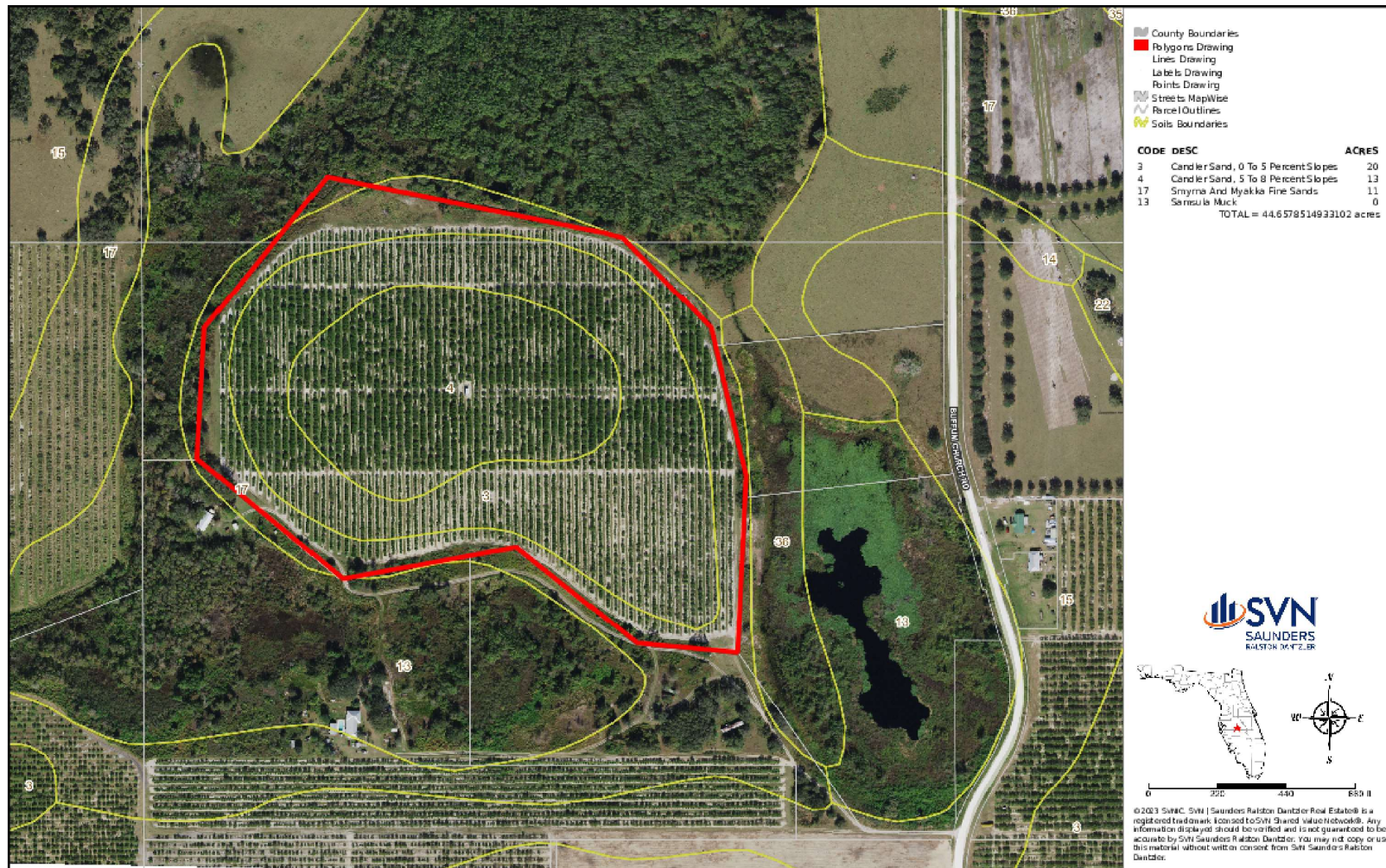
Showing Instructions: Contact Daniel Lanier



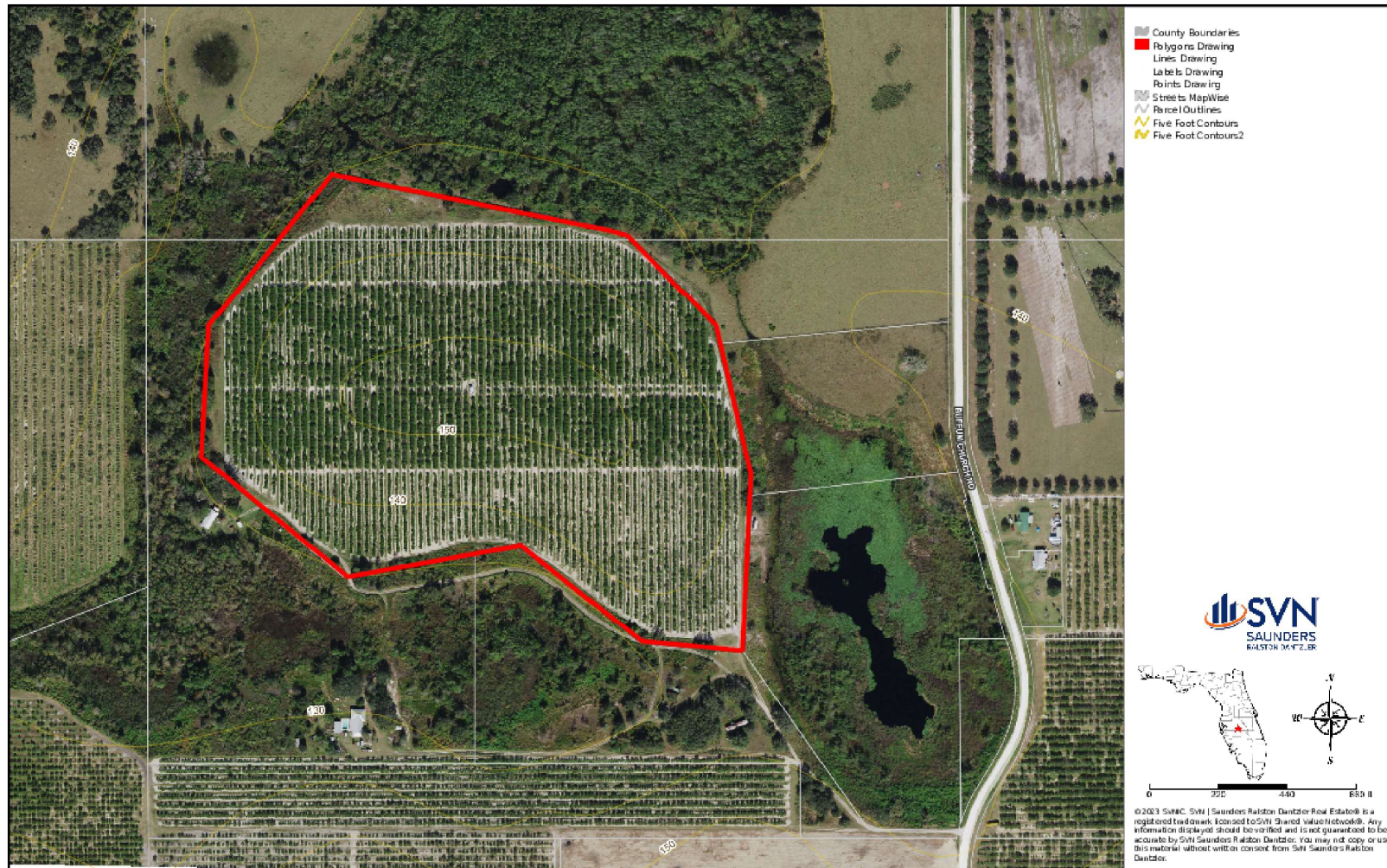
# Wetlands Map

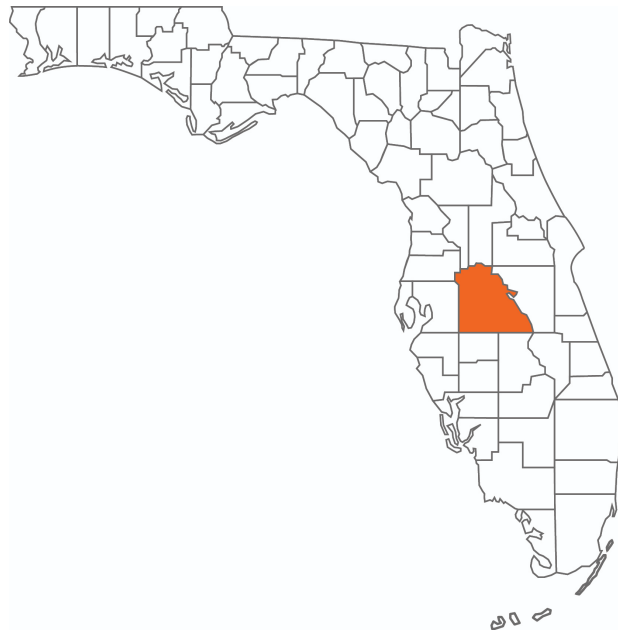


# Soils Map



# Elevation Map





## POLK COUNTY FLORIDA

Founded	1861	Density	386.5 [2019]
County Seat	Bartow	Population	775,084 [2023]
Area	1,875 sq. mi.	Website	polk-county.net

In Florida, Polk County is a leading contributor to the state's economy and politics. Concerning the local economy, industries like citrus, cattle, agriculture, and phosphate have all played extremely vital roles in Polk County. An increase in tourist revenue has also significantly contributed to the county's economic growth in recent years. As the heart of Central Florida, Polk County's location between the Tampa and Orlando Metropolitan Areas has aided in the development and growth of the area. Residents and visitors alike are drawn to the unique character of the county's numerous heritage sites, cultural venues, stunning natural landscapes, and plentiful outdoor activities.





**DANIEL LANIER**

Senior Advisor

daniel.lanier@svn.com

Direct: 877.518.5263 x377 | Cell: 863.698.2971

## PROFESSIONAL BACKGROUND

Daniel Lanier is a Senior Advisor at SVN | Saunders Ralston Dantzler Real Estate in Lakeland, Florida.

Previously, Daniel was a founder and managing partner of Sawmill Citrus Nursery. With years of experience in Central Florida's agricultural industry, his knowledge and expertise extend to and beyond commercial beef cattle, citrus, nursery, and row crop farming.

At SVN SRD, Daniel's specialties encompass a wide range of land types, including ranches, citrus groves, and agricultural land. From livestock to produce, his expertise has assisted clients in various land transactions throughout the Central Florida real estate market.

Daniel has also worked in crop insurance since 2011. This experience, now combined with his role as a real estate advisor, has allowed him to service clients all over the southeastern United States, further solidifying himself as an expert in this field.

Growing up in Central Florida, Daniel graduated from Fort Meade High School and South Florida State College. He and his wife, Randi, have been married since 2015. Together, they are proud parents to both a son and a daughter.

SVN | Saunders Ralston Dantzler  
1723 Bartow Rd  
Lakeland, FL 33801



# ONE OF AMERICA'S BEST BROKERAGES



One of America's  
Best Brokerages



APEX 2022 Top  
National Producer



Most Influential  
Business Leaders



Largest Commercial  
Real Estate Brokers  
in Tampa Bay



Ranked 210 on Inc.  
5000 Regional List



For more information visit [www.SVNsaunders.com](http://www.SVNsaunders.com)

**HEADQUARTERS**

1723 Bartow Rd  
Lakeland, FL 33801  
863.648.1528

**ORLANDO**

605 E Robinson Street, Suite 410  
Orlando, Florida 32801  
386.438.5896

**NORTH FLORIDA**

356 NW Lake City Avenue  
Lake City, Florida 32055  
352.364.0070

**GEORGIA**

203 E Monroe Street  
Thomasville, Georgia 31792  
229.299.8600

©2024 Saunders Ralston Dantzler Real Estate. All SVN® Offices Independently Owned and Operated SVN | Saunders Ralston Dantzler Real Estate is a full-service land and commercial real estate brokerage representing buyers, sellers, investors, institutions, and landowners since 1996. We are recognized nationally as an authority on all types of land, including agriculture, ranch, recreation, and residential development. Our commercial real estate services include property management, leasing and tenant representation, valuation, business brokerage, and advisory and counseling services for office, retail, industrial, and multifamily properties. Our firm also features an auction company, a forestry division, international partnerships, and extensive expertise in conservation easements. Located in Florida, Georgia, and Alabama, we provide proven leadership and collaborative expertise backed by the strength of the SVN® global platform.

