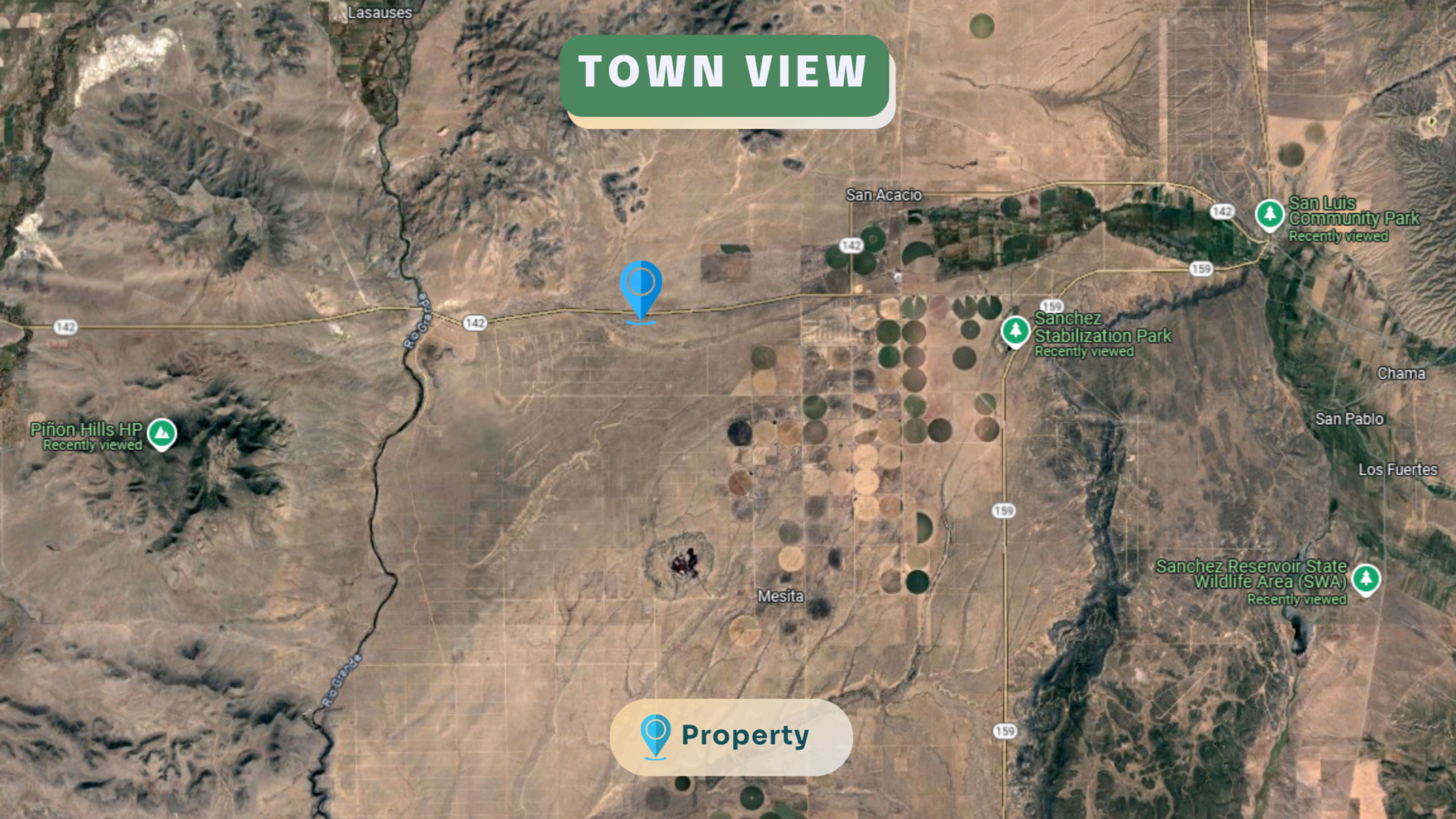


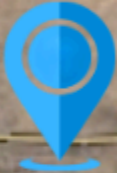
TOWN VIEW



Piñon Hills HP
Recently viewed

San Acacio

San Luis
Community Park
Recently viewed



Sanchez
Stabilization Park
Recently viewed

Chama

San Pablo

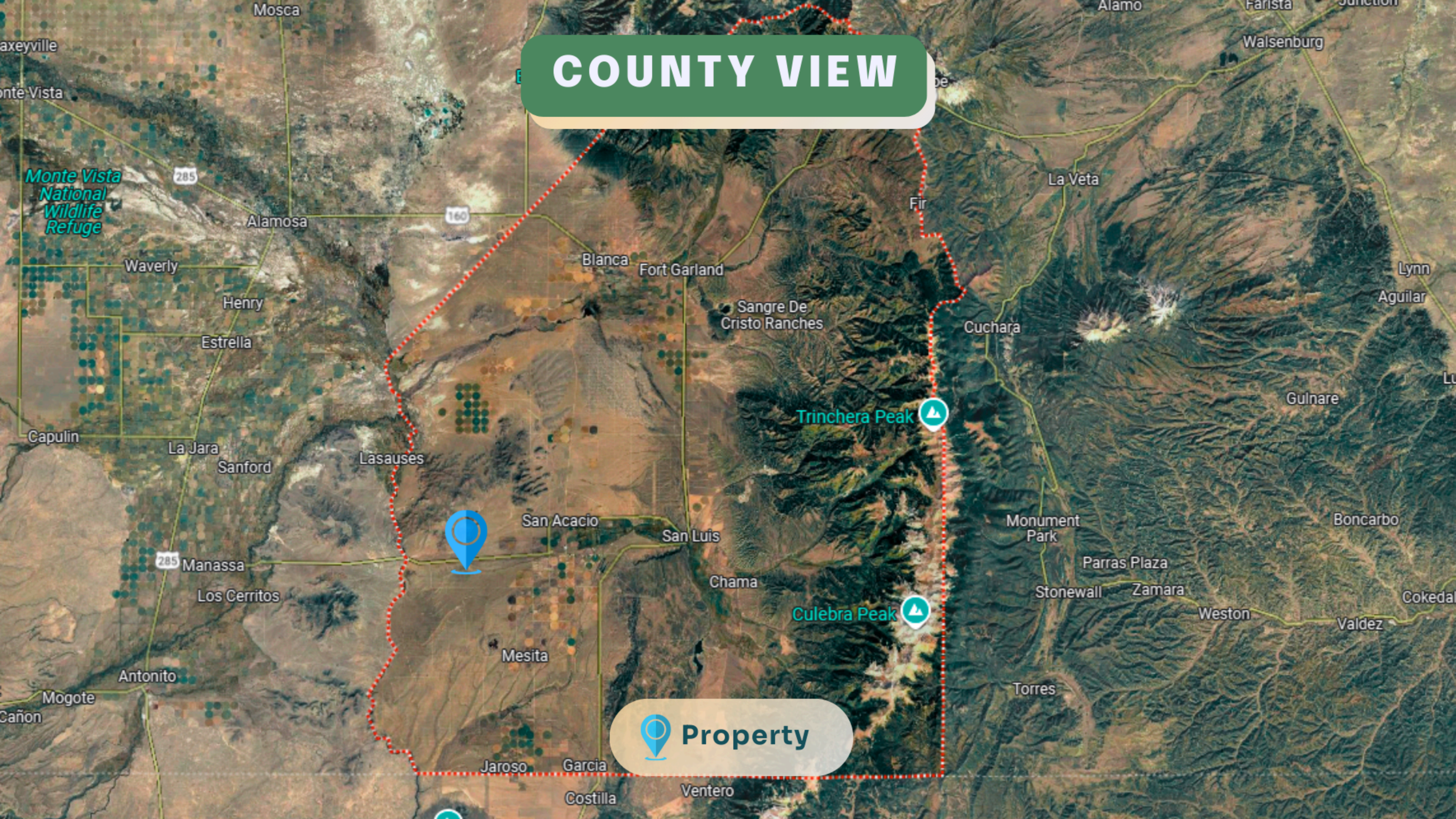
Los Fuertes

Mesita

Sanchez Reservoir State
Wildlife Area (SWA)
Recently viewed

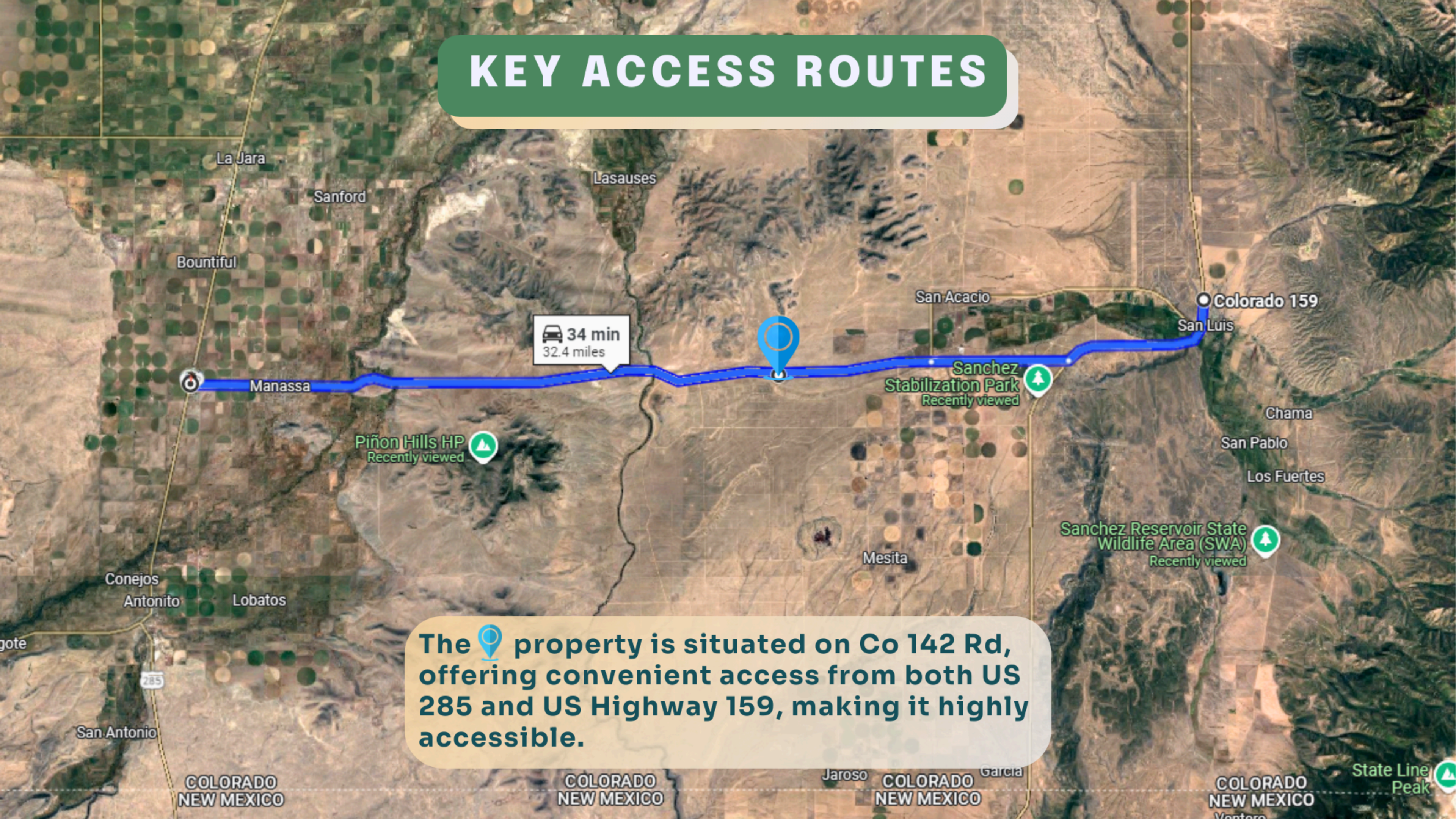
 Property


COUNTY VIEW




Property

KEY ACCESS ROUTES



 34 min
32.4 miles


The  property is situated on Co 142 Rd, offering convenient access from both US 285 and US Highway 159, making it highly accessible.

COLORADO
NEW MEXICO

COLORADO
NEW MEXICO

COLORADO
NEW MEXICO

COLORADO
NEW MEXICO

State Line
Peak 

DRIVING DIRECTIONS




8 min
7.2 miles

Tera's Corner
Recently viewed

Watcher's Rest Campsite
Recently viewed

Sanchez Stabilization Park
Recently viewed

Minute Co - Charro Cour

Head south on Cerritos Rd, turn right onto CO-142 W for 2.5 miles, then stay right on CO-142 W for 4.7 miles. The  property is on the left.