



MCGEE BRANCH EAST TRACT

CR-343

BRONSON, FL 32621

Dean Saunders, ALC, CCIM

C: 863.287.8340

dean@svn.com

John A. "Tony" Wallace, CF

C: 352.538.7356

tony.wallace@svn.com

Greg Driskell

C: 386.867.2736

greg.driskell@svn.com

Property Overview



Sale Price **\$10,319,400**

OFFERING SUMMARY

Acreage: 3,822 Acres
Price / Acre: \$2,700
City: Bronson
County: Levy
Property Type: Timberland

PROPERTY OVERVIEW

The McGee Branch East Tract, 3,822 acres of productive forests located in Levy County, FL, is an exceptional timberland investment opportunity. The property has been professionally managed by several major timber companies over the past decades and features merchantable and premerchantable pine plantations established with seedlings from some of the South's premier tree nurseries using state-of-the-art silvicultural methods on very productive soils. Natural hardwoods and cypress in the wetlands provide excellent wildlife habitat and deer, Osceola wild turkey, hogs and small game are plentiful. A well maintained road system and direct entry CR-343, a two-lane paved highway, provides excellent access for timber management and recreational uses.

- 287 acres of merchantable planted pine
- 1,269 acres of premerchantable planted pine
- 600 acres of harvested areas ready for reforestation
- 1,630 acres of natural timber
- Duke Energy 230-kV transmission line traverses property

Additional timberland/recreational tracts also available at this location.

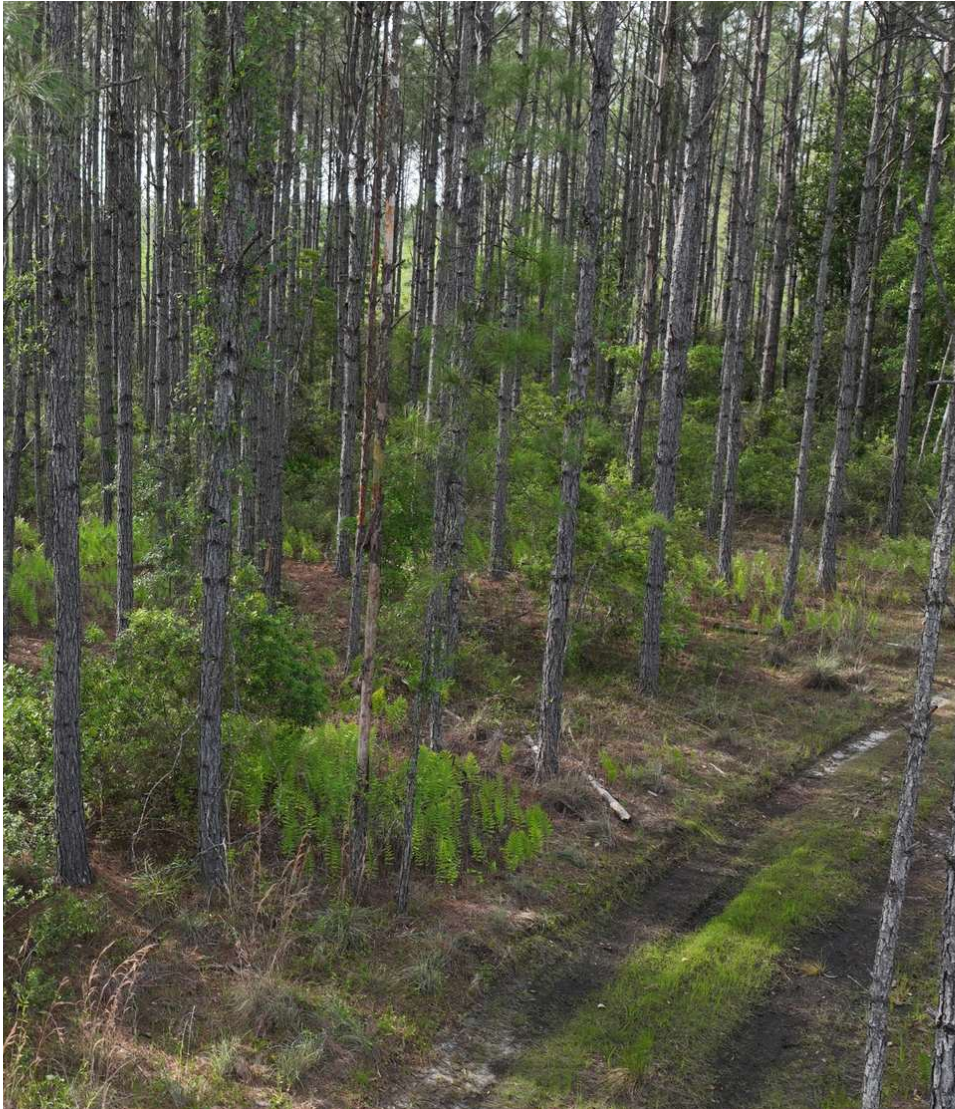
Specifications & Features



SPECIFICATIONS & FEATURES

Land Types:	<ul style="list-style-type: none">• Hunting & Recreation Properties• Land Investment• Timberland
Uplands / Wetlands:	61% uplands, 39% wetlands
Soil Types:	Primarily Smyrna Fine Sands in the uplands.
Taxes & Tax Year:	\$12,790.54 [\$3.35/acre], 2023
Zoning / FLU:	Forestry/Rural Residential
Road Frontage:	Approximately 2.2 miles of frontage on CR-343, a 2-lane paved county highway. Less than 1/2 hour drive to Cedar Key on the Gulf of Mexico and to the Suwannee River. Within an hour drive to Gainesville and Ocala. Adjacent to Goethe State Forest and near the Devil's Hammock Wildlife Management Area, the Upper Waccasassa Conservation Area, and the Lower Suwannee National Wildlife Refuge.
Nearest Point of Interest:	
Current Use:	The property has been in commercial timber production for decades.
Potential Recreational / Alt Uses:	There is an active hunting and recreation program on the property and is licensed to a hunting club at top market rate.
Game Population Information:	Plentiful deer, Osceola wild turkeys, hogs, and small game.

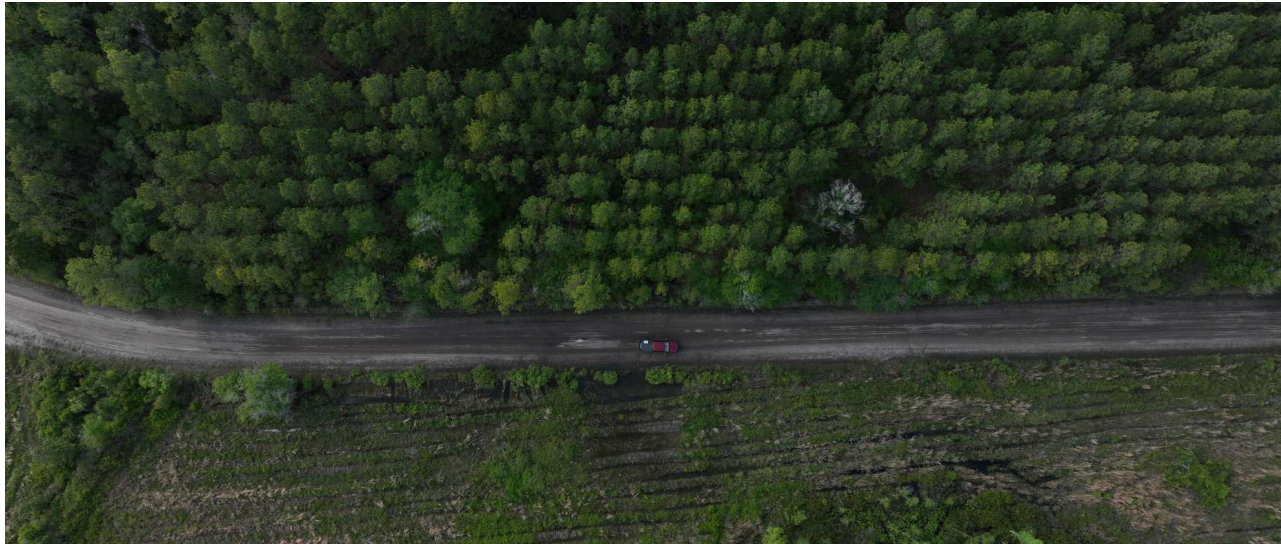
Specifications & Features



Timber Cruise:

GIS shapefiles and associated geodatabase containing timber stand information are available to qualified buyers upon signing a Confidentiality Agreement.

Location



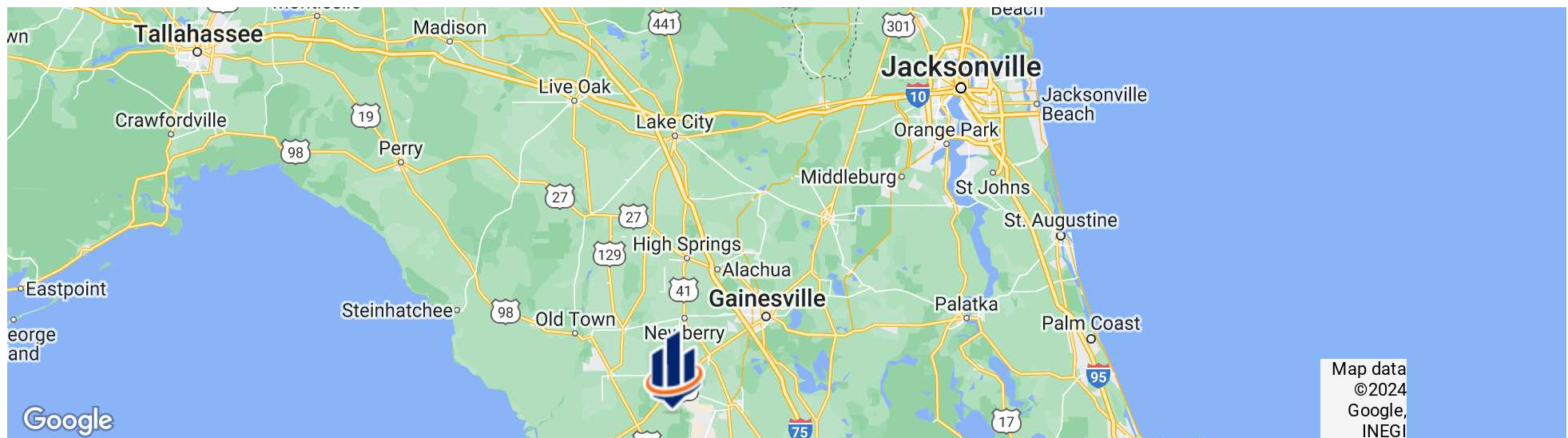
LOCATION & DRIVING DIRECTIONS

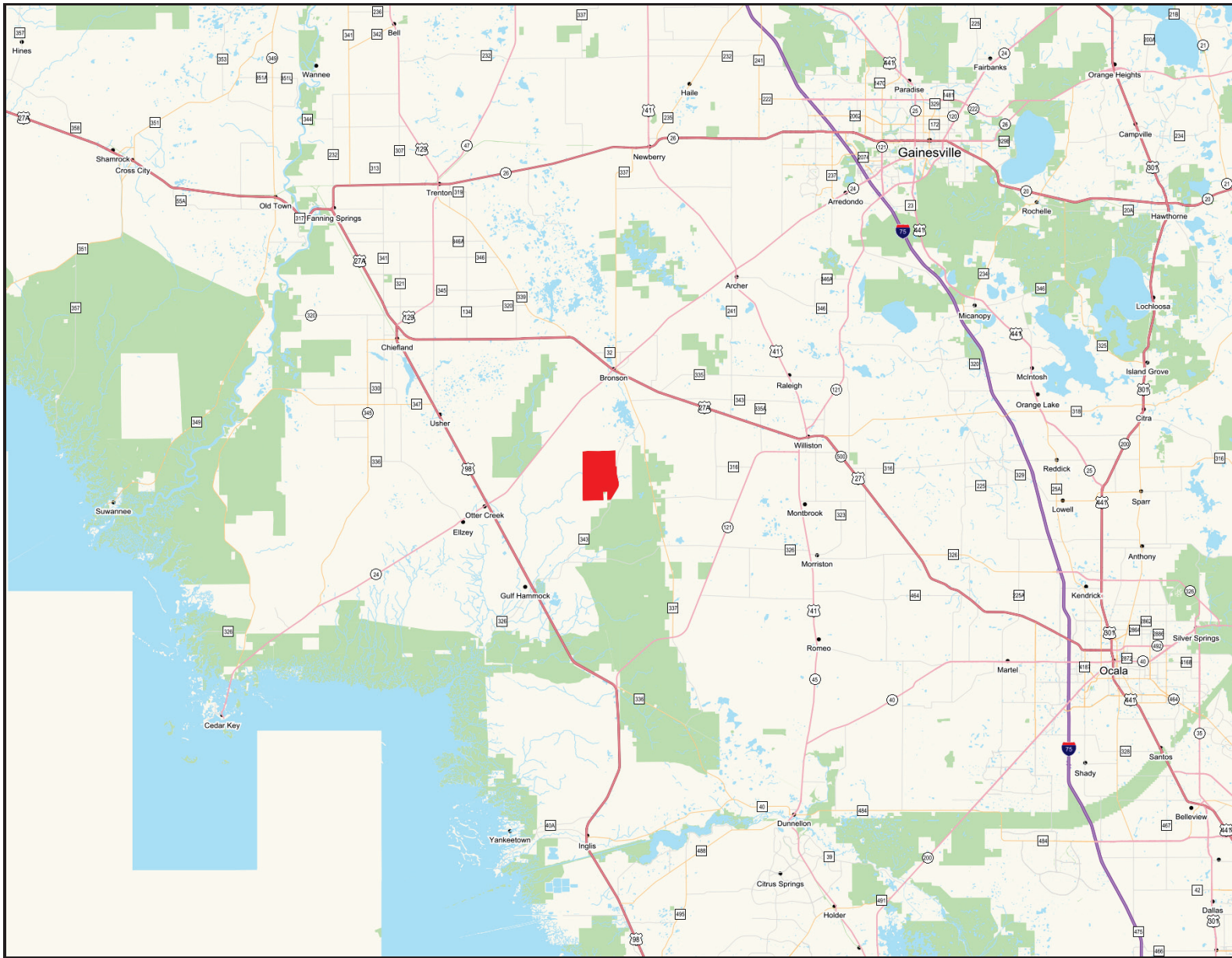
Parcel: 252200000 252300000
254000000 362400000
365300000 365400000
366300000 366800000

GPS: 29.3545922, -82.6388147

Driving Directions: From Bronson take CR-337 south for 3.3 miles then right on CR-343 then 3.6 miles to entrance on the right.

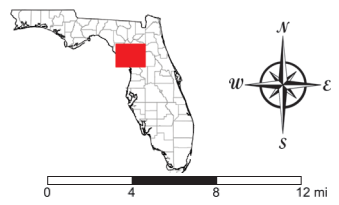
Showing Instructions: Contact listing agent.





McGee Branch East Tract - Location Map

- Polygons Drawing
- Lines Drawing
- Labels Drawing
- Points Drawing



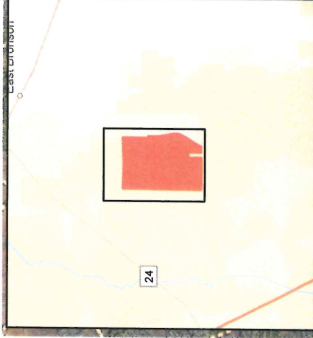
©2023 SVNIC. SVN | Saunders Ralston Dantzier Real Estate® is a registered trademark licensed to SVN Shared Value Network®. Any information displayed should be verified and is not guaranteed to be accurate by SVN Saunders Ralston Dantzier. You may not copy or use this material without written consent from SVN Saunders Ralston Dantzier.

McGee Branch East Timberland Tract

Levy County, Florida

Timber Stand Map

2023 NAIP Aerial Photo



TRACT	STANDARD	STRATA CODE	LAND COVER CLASS	ACRES
McGee Branch East	4	Sp195h	Pine Plantation, Merchantable	86
	5	Sp195h	Pine Plantation, Merchantable	3
	6	Sp195h	Pine Plantation, Merchantable	9
	7	Sp195h	Pine Plantation, Merchantable	5
	8	Sp195h	Pine Plantation, Merchantable	156
	9	U91995h	Pine Plantation, Merchantable	1
	22	Sp2007h	Pine Plantation, Merchantable	44
	26	Sp2009h	Pine Plantation, Merchantable	539
	28	Sp2010h	Pine Plantation, Merchantable	289
	29	Sp2011h	Pine Plantation, Merchantable	184
	38	U92023h	Pine Plantation, Merchantable	37
	39	U92024h	Pine Plantation, Merchantable	1,630
	41	U92024h	Natural Timber, Bottomland, Merchantable	287
	101	HW0nb	Natural Timber, Bottomland, Merchantable	1,269
	990	COM-H-U	Planned Harvest	3
	992	COM-H-U	Planned Harvest	34
	994	ROW	Open, Nonforested	14
	995	CD	Open, Nonforested	139
	997	CD	Open, Nonforested	37
998	COM-H-U	Site Preparation	327	
See Branch East Total				3,272

Boundary

Planned Harvest : 120 Acres

Site Preparation : 366 Acres

Outover Pine : 114 Acres

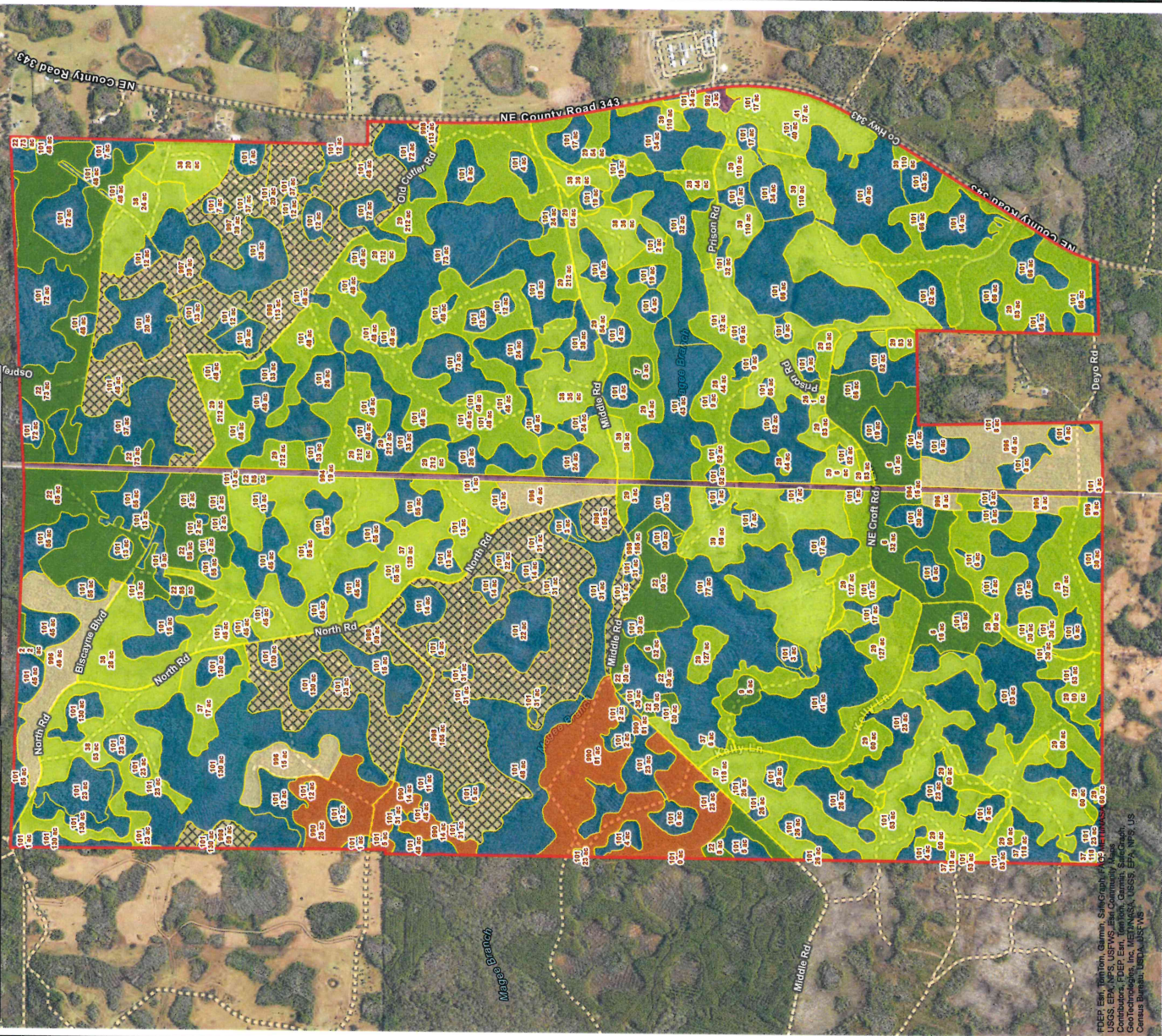
Natural Timber, Bottomland, Merchantable : 1,630 Acres

Open, Nonforested : 37 Acres

Pine Plantation, Merchantable : 287 Acres

Pine Plantation, Premerchantable : 1,269 Acres

Roads

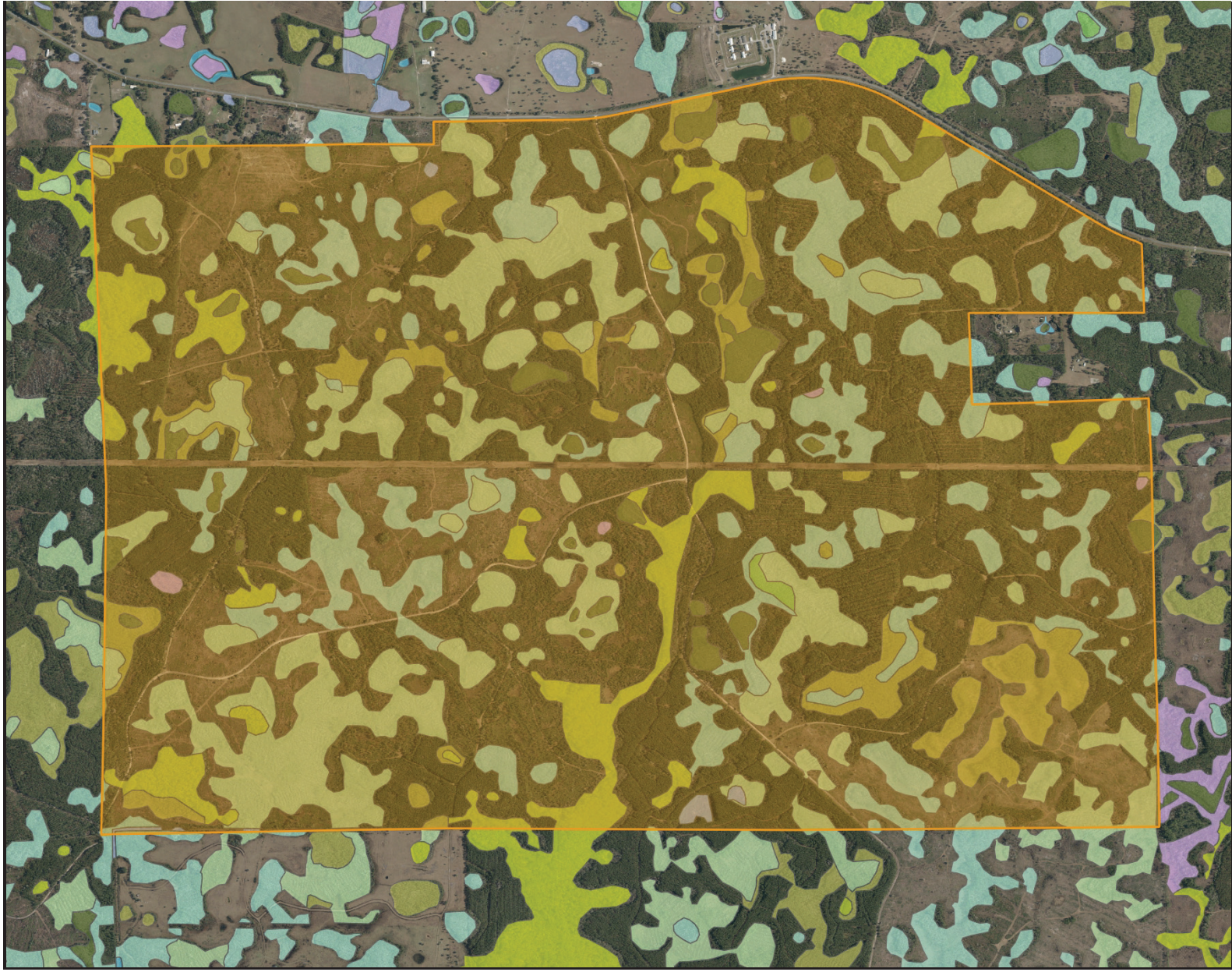


FDEP, ERM, Pamphlet, Summit, Statecraft, Inc., 100 North Ave., Suite 200, Tallahassee, FL 32309
 Geotechnical, Inc., 10000 G.W. Carver, Suite 100, Tallahassee, FL 32309
 Geotechnical, Inc., 10000 G.W. Carver, Suite 100, Tallahassee, FL 32309
 Geotechnical, Inc., 10000 G.W. Carver, Suite 100, Tallahassee, FL 32309
 Geotechnical, Inc., 10000 G.W. Carver, Suite 100, Tallahassee, FL 32309



NATURAL RESOURCE PLANNING SERVICES, INC.
 CONSULTING FORESTERS
 356 NW Lake City Ave.
 Lake City, FL 32055
 (386) 438-5896

NOTICE:
 THIS MAP IS NOT A SURVEY. THEREFORE, ANY DERIVED ACRES NUMBERS ON THIS MAP OR ACCOMPANYING REPORT ARE APPROXIMATE, ROUNDED, AND SHOULD ONLY BE USED FOR PLANNING OR MANAGEMENT. THIS MAP IS NOT SUITABLE FOR ENGINEERING DESIGN OR CONSTRUCTION. THE USER ASSUMES ALL RESPONSIBILITIES FOR ANY ERRORS OR NEGOTIATIONS IS ENTIRELY AT THE RISK OF THE BUYER AND SELLER.
 MAP CREATED BY: J. SAARELA
 MAP CREATED ON: 04/19/2024



**McGee Branch East Tract -
Wetlands Map**

- █ Polygons Drawing
- █ Lines Drawing
- █ Labels Drawing
- █ Points Drawing
- █ Water
- █ Wetland Hardwoods
- █ Bay Swamps
- █ Mangrove Swamps
- █ Shrub Swamps
- █ Bottomland Hardwood Forest
- █ Mixed Wetland Hardwoods
- █ Wetlands Coniferous Forest
- █ Cypress
- █ Pond Pine
- █ Wetlands Forested Mixed
- █ Freshwater Marshes
- █ Saltwater Marshes
- █ Wet Prairies
- █ Emergent Aquatic Vegetation
- █ Mixed Shrub-Shrub Wetlands
- █ Non-Vegetated Wetlands

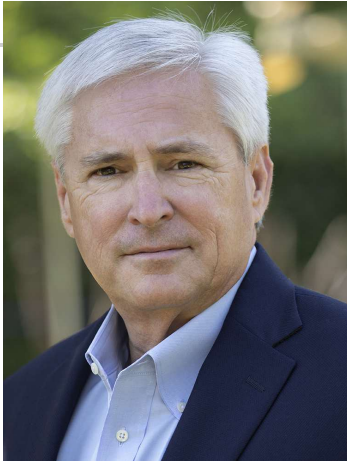
CODE/DESC	ACRES
6460: Mixed Scrub-Shrub Wetland	566.3
6300: Mixed Forested Mixed	452.7
6250: Hydric Pine Flatwoods	190.2
6170: Mixed Wetland Hardwoods	189.4
6210: Cypress Marshes	84.7
6410: Freshwater Marshes	7.3
6430: Wet Prairies	5.7
6130: Gum Swamps	5.0
TOTAL WETLANDS	1,501.2
TOTAL UPLANDS	2,320.6
TOTAL ACRES	3,821.8



Additional Photos



Meet The Team



DEAN SAUNDERS, ALC, CCIM

Managing Director/ Senior Advisor

Direct: 877.518.5263 x306 **Cell:** 863.287.8340
dean@svn.com



JOHN A. "TONY" WALLACE, CF

Senior Advisor

Direct: 877.518.5263 x336 **Cell:** 352.538.7356
tony.wallace@svn.com



GREG DRISKELL

Senior Advisor

Direct: 877.518.5263 x372 **Cell:** 386.867.2736
greg.driskell@svn.com



For more information visit www.SVNsaunders.com

HEADQUARTERS

1723 Bartow Rd
Lakeland, FL 33801
863.648.1528

ORLANDO

605 E Robinson Street, Suite 410
Orlando, Florida 32801
386.438.5896

NORTH FLORIDA

356 NW Lake City Avenue
Lake City, Florida 32055
352.364.0070

GEORGIA

203 E Monroe Street
Thomasville, Georgia 31792
229.299.8600

©2024 Saunders Ralston Dantzler Real Estate. All SVN® Offices Independently Owned and Operated SVN | Saunders Ralston Dantzler Real Estate is a full-service land and commercial real estate brokerage representing buyers, sellers, investors, institutions, and landowners since 1996. We are recognized nationally as an authority on all types of land, including agriculture, ranch, recreation, and residential development. Our commercial real estate services include property management, leasing and tenant representation, valuation, business brokerage, and advisory and counseling services for office, retail, industrial, and multifamily properties. Our firm also features an auction company, a forestry division, international partnerships, and extensive expertise in conservation easements. Located in Florida, Georgia, and Alabama, we provide proven leadership and collaborative expertise backed by the strength of the SVN® global platform.

