

Welcome to **Benford Adcock**, a picturesque piece of land in **Attala County**, Mississippi. With 166.21 acres, this property offers a diverse landscape, including 114 acres of 4-year replanted pines, 40 acres of mixed pine and hardwood Streamside Management Zones, and a powerline easement that provides areas for food plots and long-range visibility. The rolling terrain adds to the beauty, and there's even a prime hilltop location in the Northeast section, perfect for a cabin site, conveniently close to electrical service.

Access across the property is made easy by a interior gravel road. Plus, its location is a definite plus – just 10 miles east of Goodman and 12 miles west of Kosciusko off Highway 14, making it accessible within a short 50-minute drive from the north Jackson Metro area. It sounds like a wonderful opportunity for someone looking to invest in or enjoy the natural beauty and recreational potential of Mississippi land.

\$1850 per acre / \$307,489.00

Contact: J Parker Sartain 601-506-2398

"Guiding Your Land Decisions for Over 60 Years"

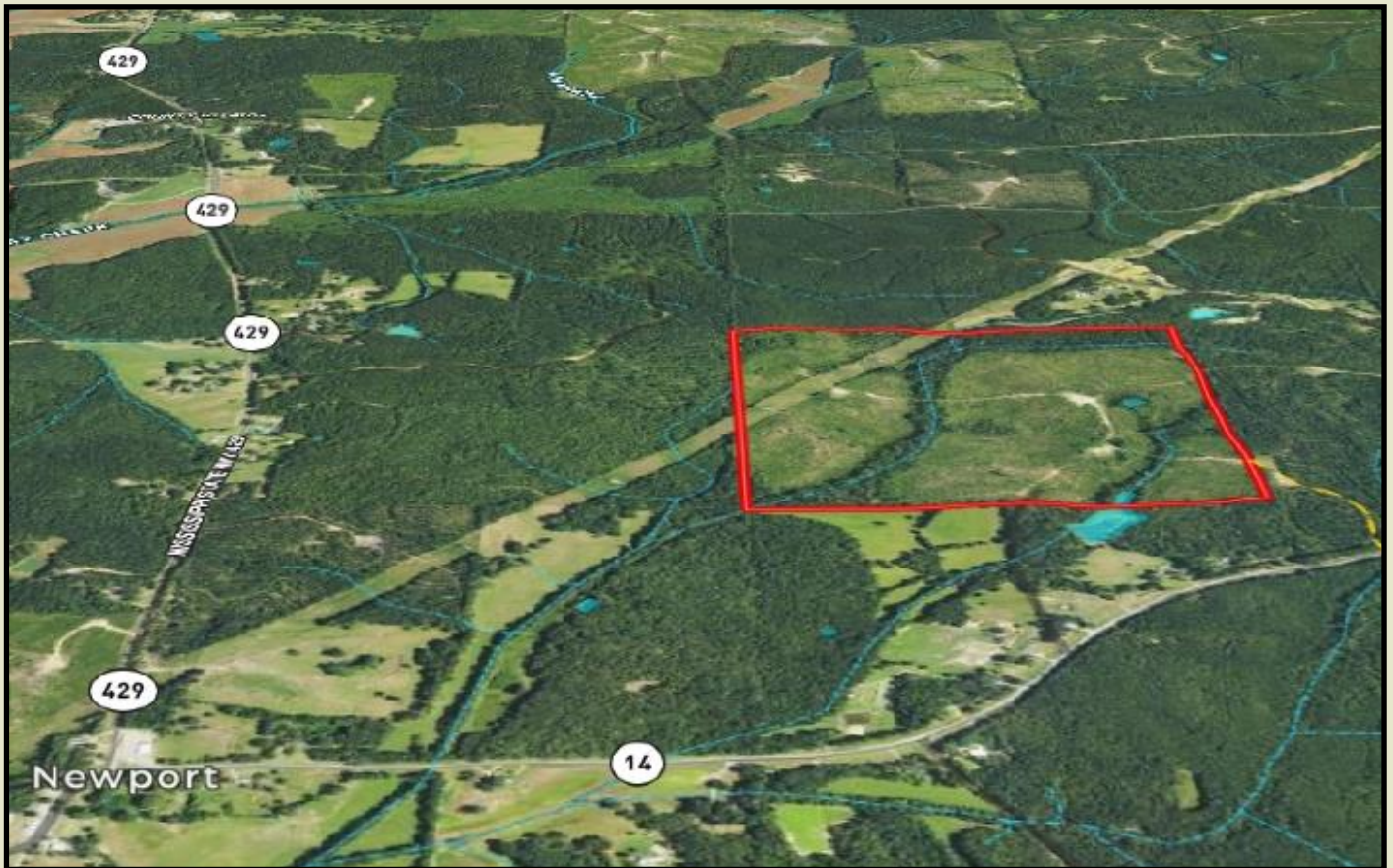
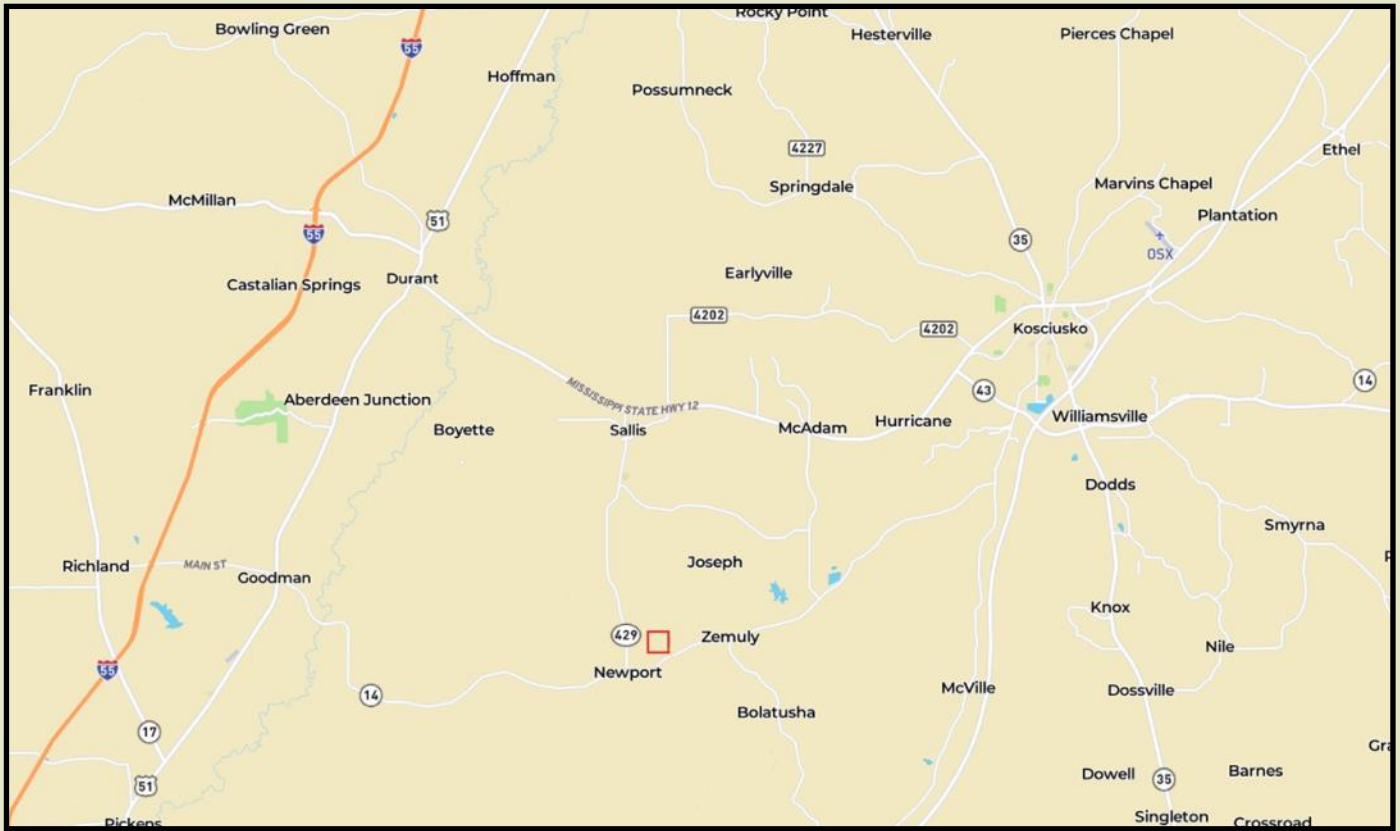
FARM | TIMBER | HUNTING

Sartain's Heritage Properties, LLC

601-856-2720 • www.SartainsHeritage.com

The advertisement features three background images: a green tractor plowing a field on the left, a dense forest of tall trees in the center, and a person in a green jacket and hat hunting in a swampy area on the right.

All information contained herein is supplied by sources deemed reliable, but is not guaranteed by Sartain's Heritage Properties, its Brokers or Agents. Properties are subject to errors, omissions, correction, price change, prior sale or withdrawal without notice. All Buyer's agents are required be identified on the first contact with Broker/Agents of Sartain's Heritage Properties and must accompany the buyer on showings to receive full fee participation. Otherwise, the fee participation shall be at the sole discretion of the Broker and Sartain's Heritage Properties.



All information contained herein is supplied by sources deemed reliable, but is not guaranteed by Sartain's Heritage Properties, its Brokers or Agents. Properties are subject to errors, omissions, correction, price change, prior sale or withdrawal without notice. All Buyer's agents are required be identified on the first contact with Broker/Agents of Sartain's Heritage Properties and must accompany the buyer on showings to receive full fee participation. Otherwise, the fee participation shall be at the sole discretion of the Broker and Sartain's Heritage Properties.



All information contained herein is supplied by sources deemed reliable, but is not guaranteed by Sartain's Heritage Properties, its Brokers or Agents. Properties are subject to errors, omissions, correction, price change, prior sale or withdrawal without notice. All Buyer's agents are required be identified on the first contact with Broker/Agents of Sartain's Heritage Properties and must accompany the buyer on showings to receive full fee participation. Otherwise, the fee participation shall be at the sole discretion of the Broker and Sartain's Heritage Properties.