



**0.25 acres in peaceful Arkansas!**  
\$100 down payment \$120/month

# Property Highlights

- Peaceful and Quiet
- Good road access
- Lake nearby
- -Private, secluded location

# Nearby Attractions



**Crown Lake Pier**

**3.2 miles away from property**

**Horseshoe Bend Garden Club Park  
2.1 miles away from property**

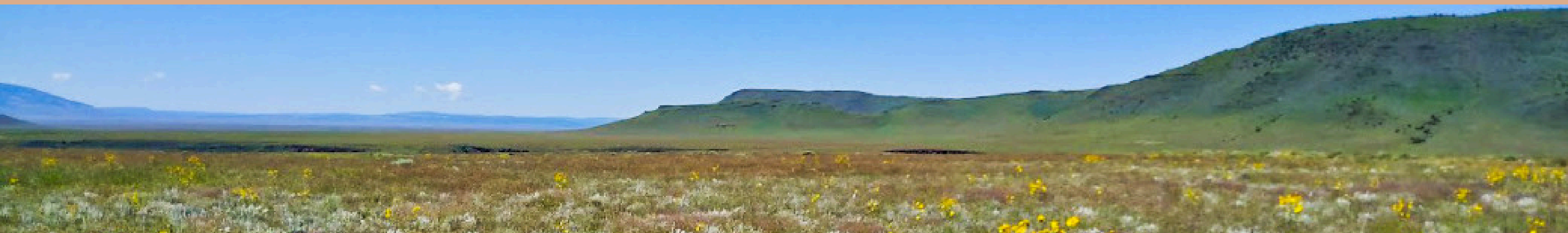


**Diamond Lake**

**6 miles away from property**

# Interested or have questions?

*Contact us today!*



**682-382-9719**



**[sales@lifetimelandusa.com](mailto:sales@lifetimelandusa.com)**

