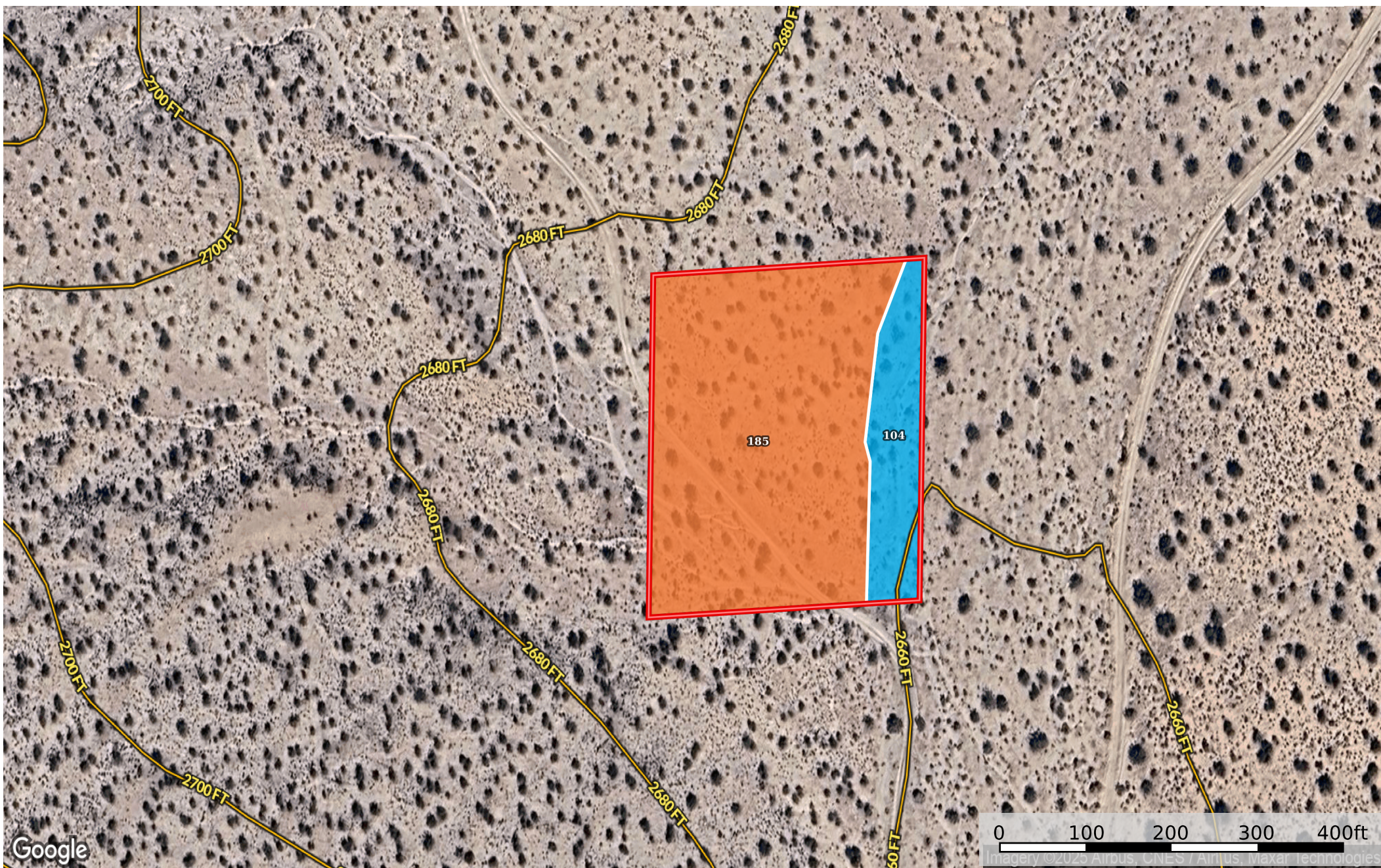


2.50 Acres Boron, Kern County, CA 228-312-20-00-2  
Kern County, California, 2.5 AC +/-



 Boundary



Boundary 2.43 ac

| SOIL CODE | SOIL DESCRIPTION                                 | ACRES   | %     | CPI | NCCPI | CAP |
|-----------|--|---------|-------|-----|-------|-----|
| 185       | Torriorthents-Rock outcrop complex, very steep   | 2       | 82.64 | 0   | -     | 7e  |
| 104       | Arizo gravelly loamy sand, 2 to 9 percent slopes | 0.43    | 17.77 | 0   | 5     | 7w  |
| TOTALS    |  | 2.43(*) | 100%  | -   | 0.89  | 7.0 |

(\*) Total acres may differ in the second decimal compared to the sum of each acreage soil. This is due to a round error because we only show the acres of each soil with two decimal.

