

USDA, USGS The National Map: Orthomagery. Data refreshed June, 2024.

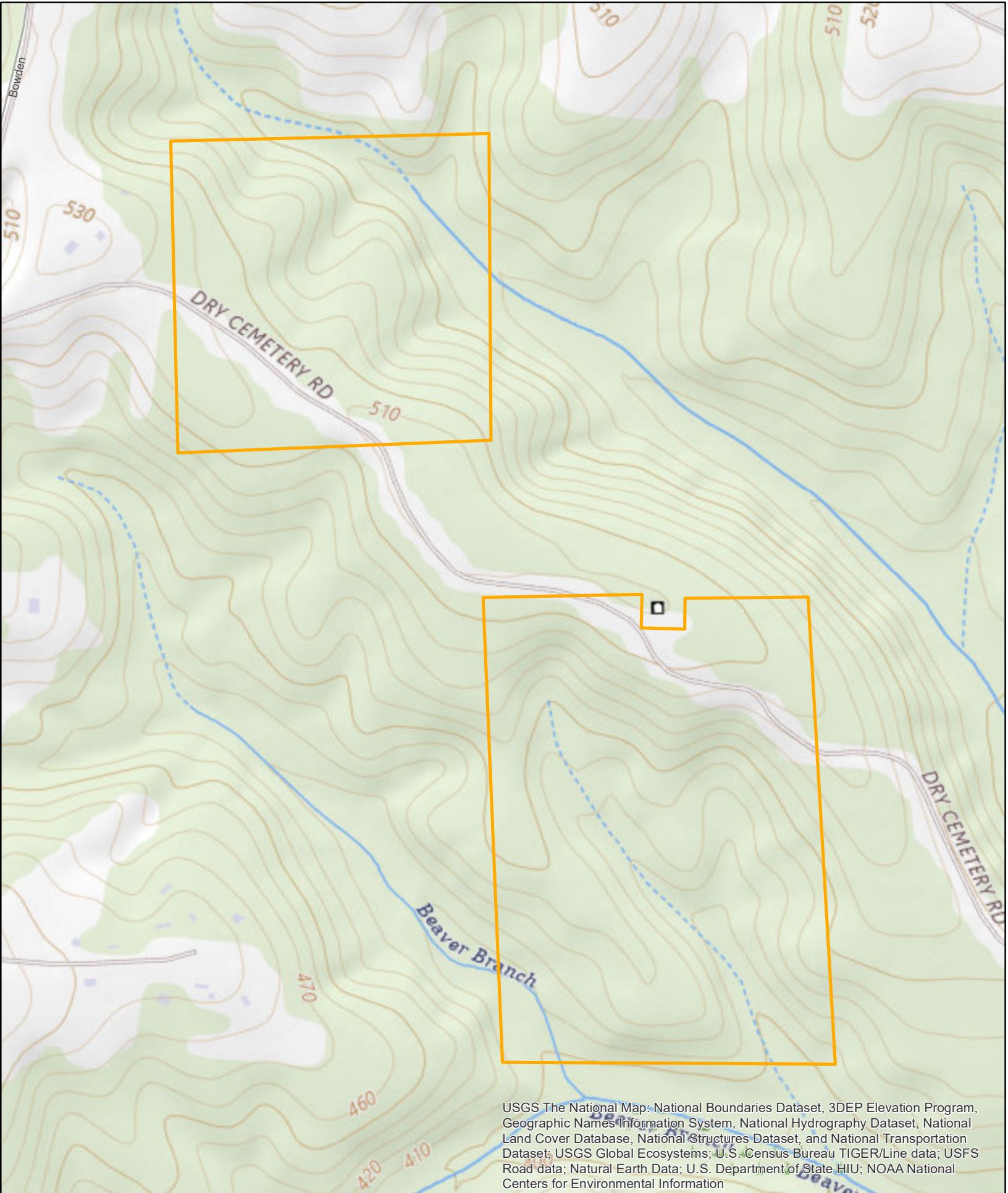


0 330 660  
Feet

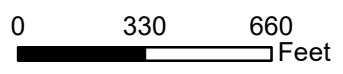
**Mason Place**  
**100+- Acres**  
**Crenshaw County, AL**

**Larson & McGowin**  
PROPERTIES

Map is for illustrative purposes. Accuracy is neither warranted nor guaranteed.



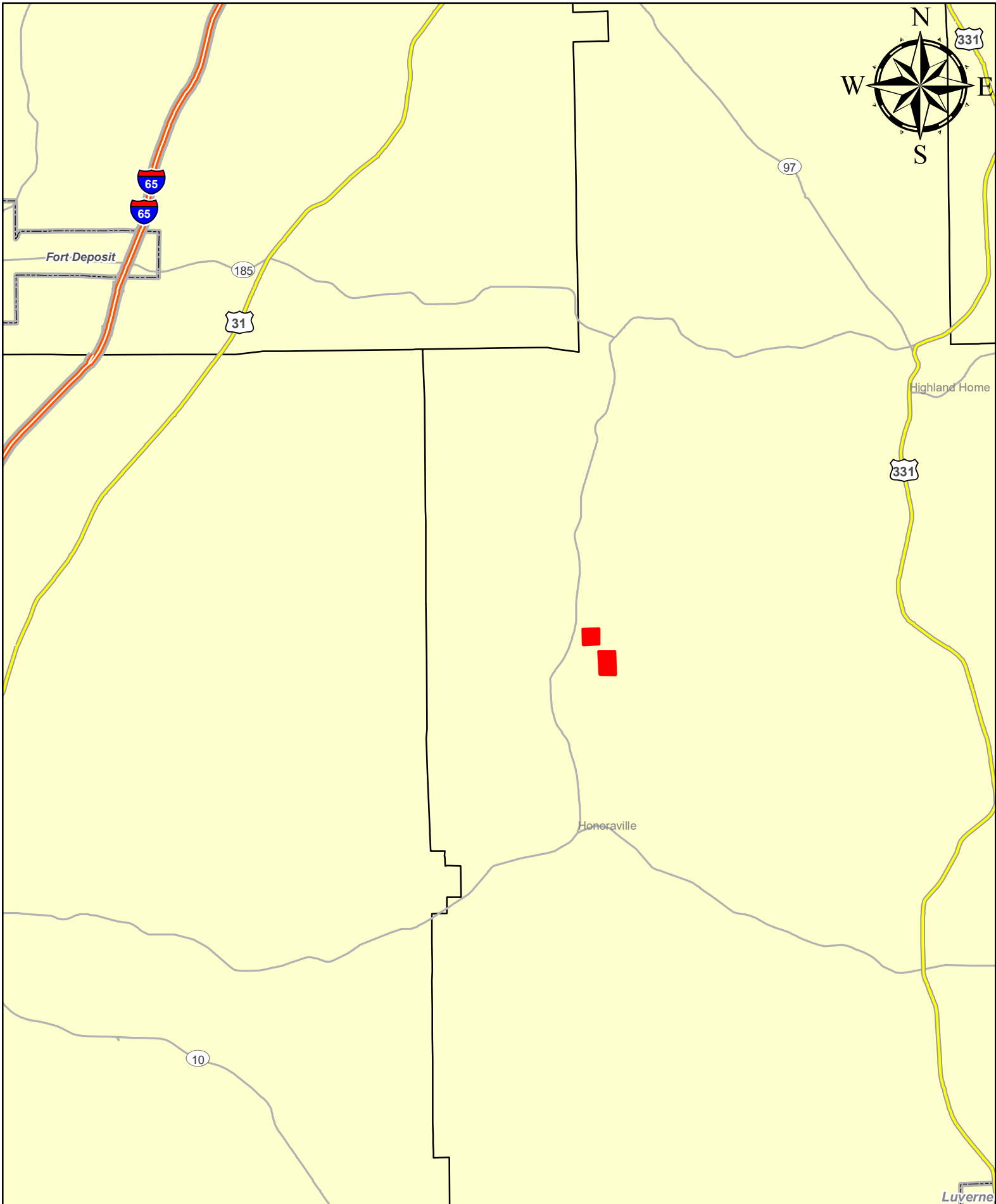
USGS The National Map: National Boundaries Dataset, 3DEP Elevation Program, Geographic Names Information System, National Hydrography Dataset, National Land Cover Database, National Structures Dataset, and National Transportation Dataset; USGS Global Ecosystems; U.S. Census Bureau TIGER/Line data; USFS Road data; Natural Earth Data; U.S. Department of State HIU; NOAA National Centers for Environmental Information



**Mason Place**  
**100+- Acres**  
**Crenshaw County, AL**



Map is for illustrative purposes. Accuracy is neither warranted nor guaranteed.



0 1 2 Miles

**The Mason Place**  
101+- Acres  
Crenshaw County, AL

Map is for illustrative purposes. Accuracy is neither warranted nor guaranteed.

**Larson & McGowin**  
PROPERTIES