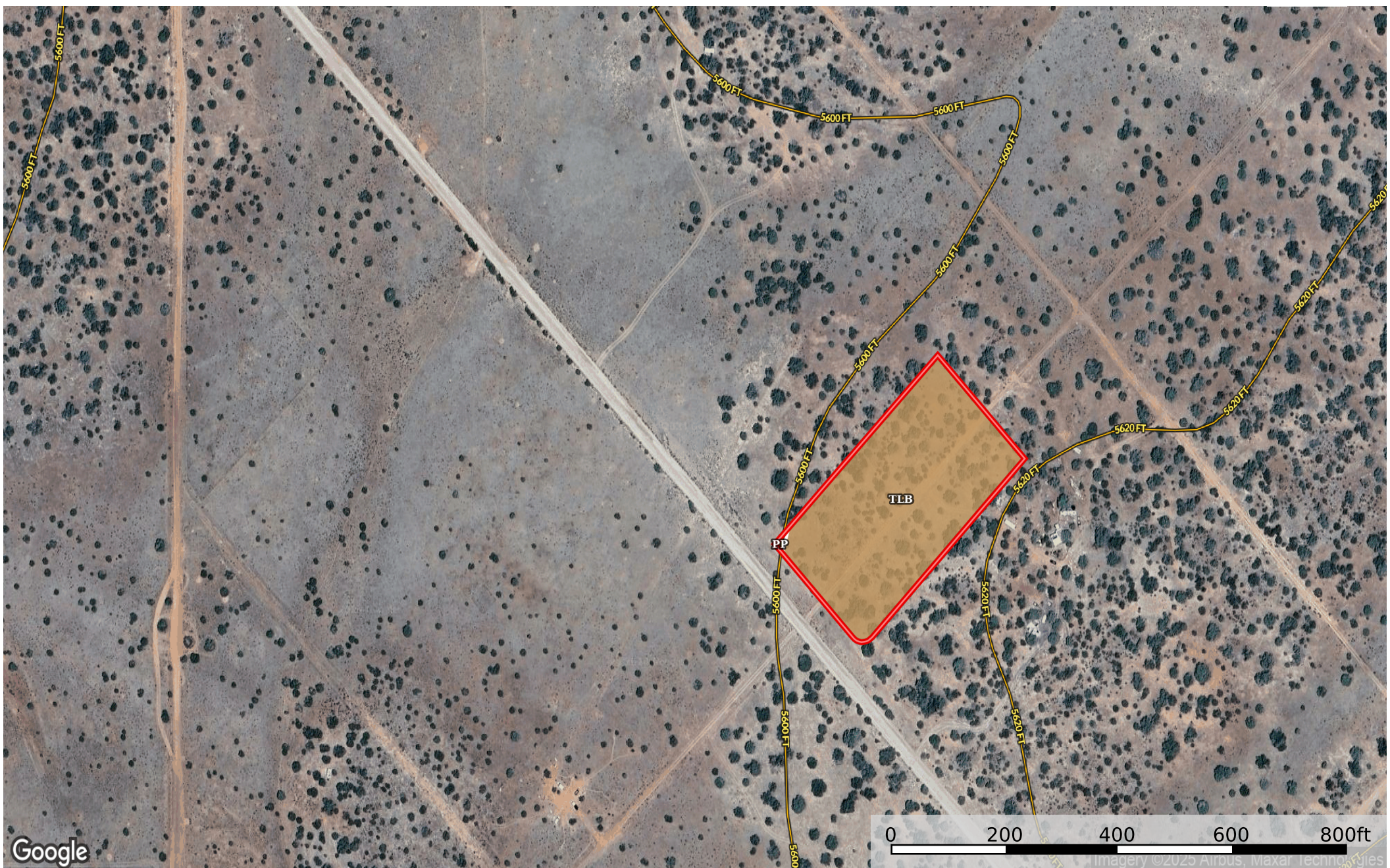


2.02 Acres Camp Verde, Yavapai County, AZ 301-19-309  
Yavapai County, Arizona, 2.02 AC +/-



 Boundary



|  Boundary 2.01 ac

| SOIL CODE | SOIL DESCRIPTION                              | ACRES   | %    | CPI | NCCPI | CAP |
|-----------|---|---------|------|-----|-------|-----|
| TIB       | Tortugas gravelly loam, 2 to 8 percent slopes | 2       | 100  | 0   | 8     | 6s  |
| Pp        | Poley-Partri loams                            | 0.01    | 0.5  | 0   | 19    | 6s  |
| TOTALS    |   | 2.01(*) | 100% | -   | 8.1   | 6.0 |

(\*) Total acres may differ in the second decimal compared to the sum of each acreage soil. This is due to a round error because we only show the acres of each soil with two decimal.

