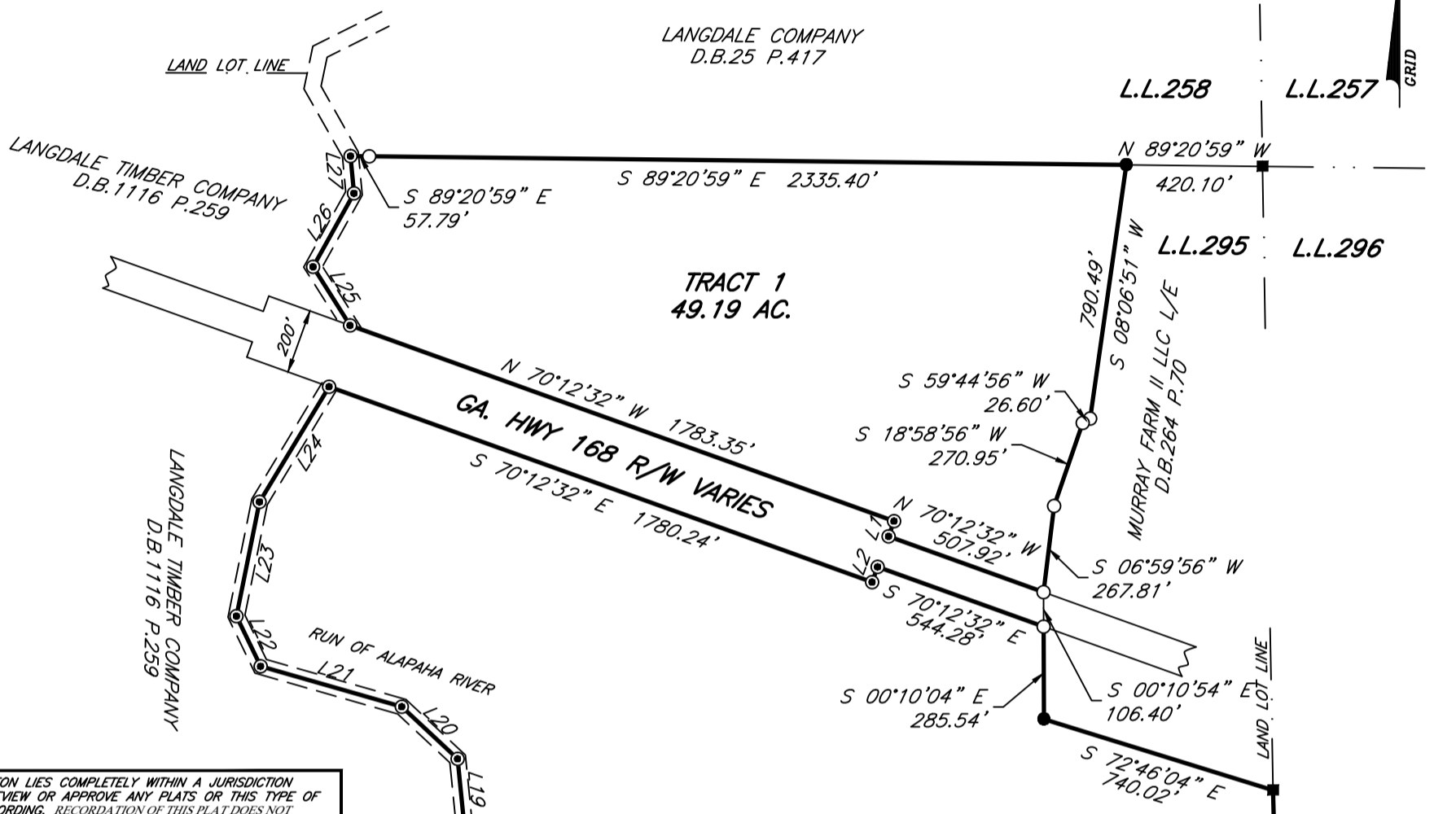
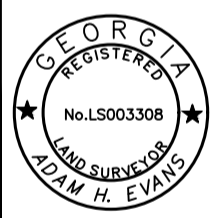


**RETRACEMENT SURVEY FOR:**  
**MONROE GOSS**  
 LOCATED IN LAND LOT 295, 10TH LAND DISTRICT  
 LANIER COUNTY, GEORGIA  
 SCALE: 1"=500'  
 DATE: 07/17/24



THE PROPERTY HEREON LIES COMPLETELY WITHIN A JURISDICTION WHICH DOES NOT REVIEW OR APPROVE ANY PLATS OR THIS TYPE OF PLAT PRIOR TO RECORDING. RECORDATION OF THIS PLAT DOES NOT IMPLY APPROVAL OF ANY LOCAL JURISDICTION, AVAILABILITY OF PERMITS, COMPLIANCE WITH LOCAL REGULATIONS OR REQUIREMENTS, OR SUITABILITY FOR ANY USE OR PURPOSE OF THE LAND. FURTHERMORE, THE UNDERSIGNED SURVEYOR CERTIFIES THAT THIS PLAT COMPLIES WITH THE MINIMUM TECHNICAL STANDARDS FOR PROPERTY SURVEYS IN GEORGIA AS SET FORTH IN THE RULES AND REGULATIONS OF THE GEORGIA BOARD OF REGISTRATION FOR PROFESSIONAL ENGINEERS AND LAND SURVEYORS AND AS SET FORTH IN O.G.G.A. SECTION 15-6-67.



*Adam H. Evans*  
 GA. RLS 3308 07/17/24  
 DATE

LINE	BEARING	DISTANCE
L1	S 19°47'52" W	50.00'
L2	N 19°47'52" E	50.00'
L3	N 05°31'32" W	130.36'
L4	N 24°04'37" W	161.37'
L5	N 23°32'42" W	331.95'
L6	N 12°40'42" W	263.67'
L7	N 32°06'40" W	335.88'
L8	N 03°57'08" W	265.16'
L9	N 54°13'53" E	212.10'
L10	S 89°46'47" E	642.03'
L11	N 24°52'08" E	184.95'
L12	N 08°11'53" W	320.37'
L13	N 55°40'02" W	207.83'
L14	S 83°52'00" W	115.48'
L15	S 50°46'12" W	243.87'
L16	N 86°09'25" W	147.26'
L17	N 19°59'46" W	129.99'
L18	N 20°51'28" E	343.30'
L19	N 05°42'54" W	198.40'
L20	N 46°58'01" W	235.59'
L21	N 74°00'39" W	452.88'
L22	N 25°45'24" W	171.72'
L23	N 11°24'33" E	359.72'
L24	N 31°08'34" E	414.95'
L25	N 32°18'15" W	213.75'
L26	N 29°05'47" E	259.54'
L27	N 05°19'25" W	115.36'

ERROR OF CLOSURE: GREATER THAN 1' IN 10,000  
 ANGULAR ERROR: LESS THAN 6" PER ANGLE  
 ADJUSTED CLOSURE: 1' = 100,000'  
 COMPASS RULE ADJUSTMENT  
 FIELD SURVEYOR: LARRY EVANS  
 EQUIP. USED: TOPCON GTS 3B TOTAL STATION-TRIMBLE GPS  
 PLAT BY: LARRY EVANS  
 COMP. FILE: MGOSS-071724

- LEGEND:
- 1/2 PIPE SET
  - IRON PIN FOUND
  - CONCRETE MARKER FOUND
  - ⊙ CALCULATED POSITION (NO CORNER SET)
  - △ FENCE CORNER-TURN
  - x- FENCE ON OR NEAR LINE

STATEWIDE SURVEYING COMPANY  
 521 ETHEL STREET  
 DOUGLAS, GEORGIA 31533  
 912-384-7723