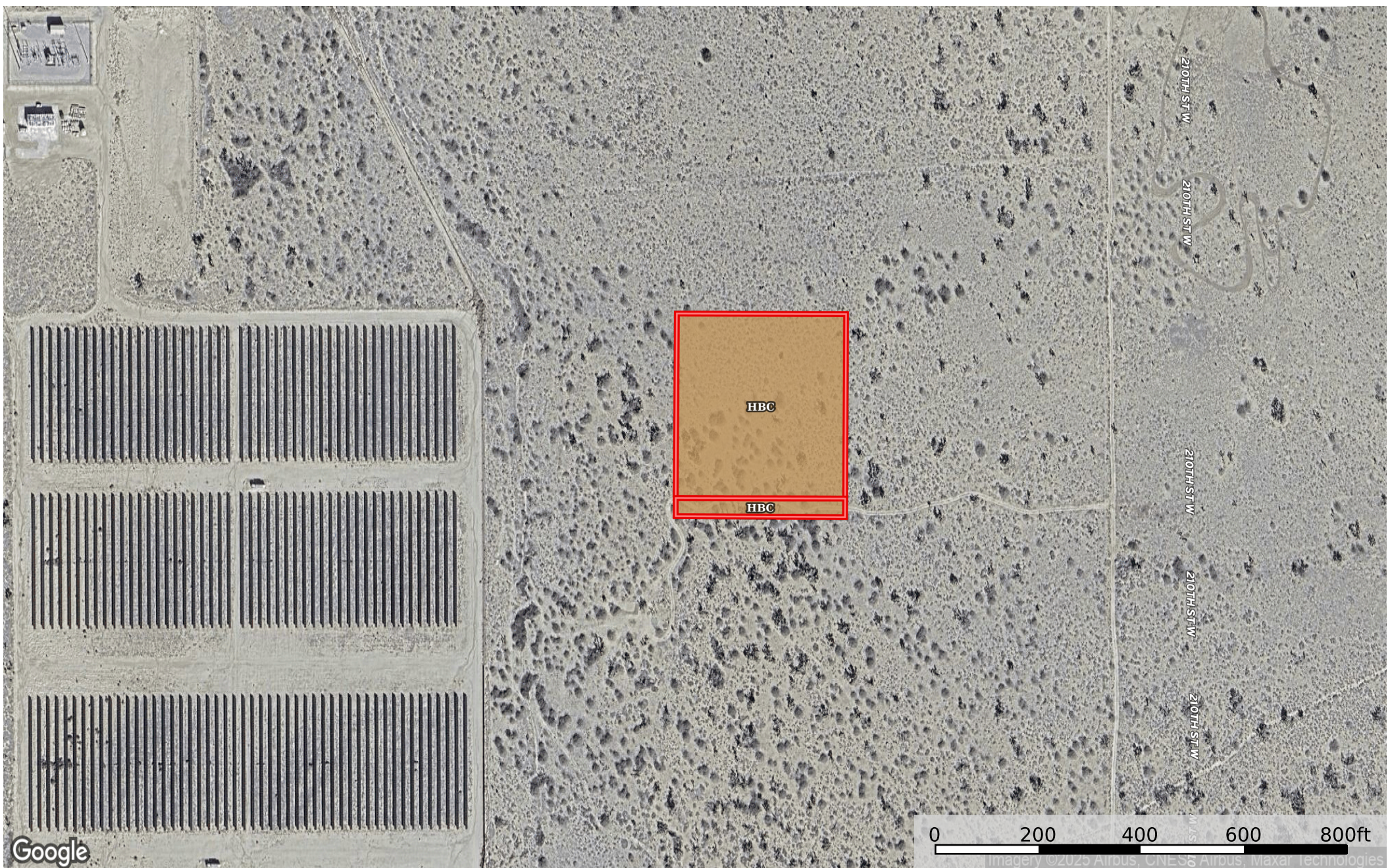


2.50 Acres Rosamond, Kern County, CA 261-431-38-00-6
Kern County, California, 2.5 AC +/-



 Boundary

|  All Polygons 2.51 ac

| SOIL CODE | SOIL DESCRIPTION | ACRES | % | CPI | NCCPI | CAP |
|-----------|--|---------|-------|-----|-------|-----|
| HbC | Hanford coarse sandy loam, 2 to 9 percent slopes | 2.51 | 100.0 | 0 | 18 | 4e |
| TOTALS | | 2.51(*) | 100% | - | 18.0 | 4.0 |

(*) Total acres may differ in the second decimal compared to the sum of each acreage soil. This is due to a round error because we only show the acres of each soil with two decimal.

|  Boundary 2.28 ac

| SOIL CODE | SOIL DESCRIPTION | ACRES | % | CPI | NCCPI | CAP |
|-----------|--|---------|------|-----|-------|-----|
| HbC | Hanford coarse sandy loam, 2 to 9 percent slopes | 2.28 | 100 | 0 | 18 | 4e |
| TOTALS | | 2.28(*) | 100% | - | 18.0 | 4 |

(*) Total acres may differ in the second decimal compared to the sum of each acreage soil. This is due to a round error because we only show the acres of each soil with two decimal.

|  Boundary 0.23 ac

| SOIL CODE | SOIL DESCRIPTION | ACRES | % | CPI | NCCPI | CAP |
|-----------|--|---------|------|-----|-------|-----|
| HbC | Hanford coarse sandy loam, 2 to 9 percent slopes | 0.23 | 100 | 0 | 18 | 4e |
| TOTALS | | 0.23(*) | 100% | - | 18.0 | 4 |









(*) Total acres may differ in the second decimal compared to the sum of each acreage soil. This is due to a round error because we only show the acres of each soil with two decimal.

Capability Legend

Increased Limitations and Hazards

Decreased Adaptability and Freedom of Choice Users

Land, Capability

| |  |  |  |  |  |  |  |  |
|--------------|---|---|---|---|--|---|---|---|
| | 1 | 2 | 3 | 4 | 5 | 6 | 7 | 8 |
| 'Wild Life' | • | • | • | • | • | • | • | • |
| Forestry | • | • | • | • | • | • | • | |
| Limited | • | • | • | • | • | • | • | |
| Moderate | • | • | • | • | • | • | | |
| Intense | • | • | • | • | • | | | |
| Limited | • | • | • | • | | | | |
| Moderate | • | • | • | | | | | |
| Intense | • | • | | | | | | |
| Very Intense | • | | | | | | | |

Grazing Cultivation

(c) climatic limitations (e) susceptibility to erosion

(s) soil limitations within the rooting zone (w) excess of water