



SNYDER 9.6 HOMESITE

SEBRING, FL 33870

Daniel Lanier
863.698.2971
daniel.lanier@svn.com

Property Overview



Sale Price

\$199,900

PROPERTY OVERVIEW

This 9.6 acre property is located near the intersection of Snyder Road and Kenilworth Boulevard, less than 5 miles from all that Downtown Sebring has to offer. With 125 feet of frontage on Kenilworth Boulevard, this secluded property is set back on a high and dry hill, giving you the private homesite setting, just minutes from everything you may need.

OFFERING SUMMARY

Acreage:	9.6 Acres
Price / Acre:	\$20,823
City:	Sebring
County:	Highlands
Property Type:	Farms & Nurseries Properties, Land Other

Specifications & Features



SPECIFICATIONS & FEATURES

Land Types:	<ul style="list-style-type: none">• Farms & Nurseries Properties• Land Other
Uplands / Wetlands:	100% Uplands
Soil Types:	Astatula Sand
Zoning / FLU:	AG
Water Source & Utilities:	City water along Kenilworth Blvd
Road Frontage:	125' on Kenilworth Blvd
Nearest Point of Interest:	Less than 5 miles to downtown Sebring 2.7 miles to Sebring International Raceway Less than 3 miles to Sebring Regional Airport



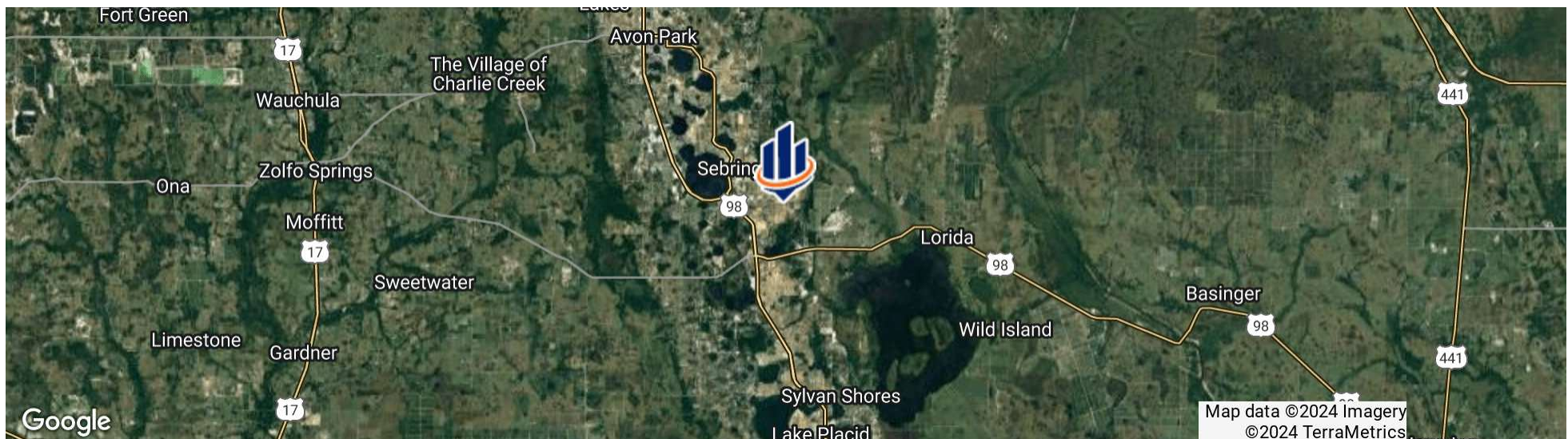
LOCATION & DRIVING DIRECTIONS

Parcel:

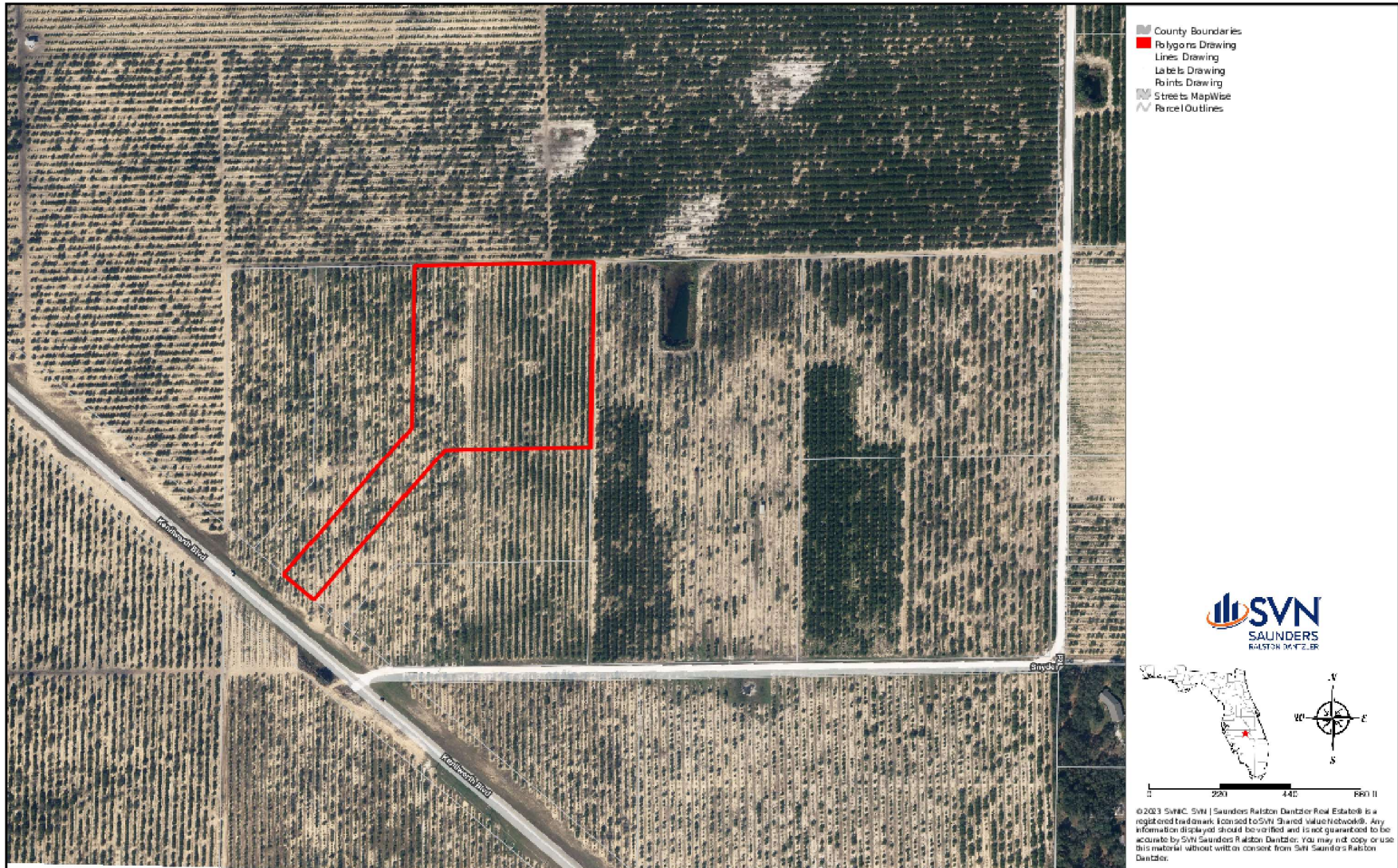
GPS: 27.4650145, -81.3919298

Driving Directions:

- From the Sebring Parkway in downtown Sebring, travel 3.1 miles east on Kenilworth Blvd
- The property is on the northeast side of Kenilworth Blvd north of the intersection at Snyder Road.

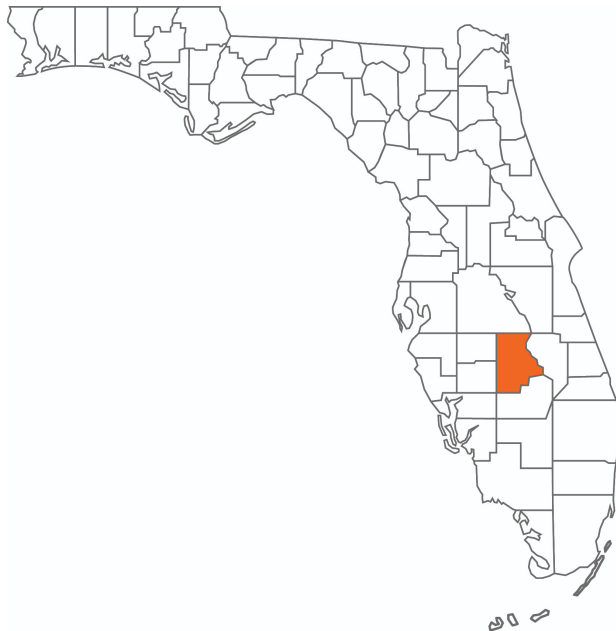


Boundary Map



Soil Map





HIGHLANDS COUNTY

FLORIDA

Founded	1921	Density	103.3 [2019]
County Seat	Sebring	Population	103,502 [2023]
Area	1,028 sq mi	Website	highlandsfl.gov

Highlands County comprises the Sebring-Avon Park Metropolitan Statistical Area, and its county seat is the city of Sebring. Equidistant to Tampa, Orlando, and South Florida, Highlands County is located within two hours of more than 86% of Florida's population. This location positions the county as a great bedroom community for workers who commute throughout the state. Highlands County is also near three interstates connecting to several commercial airports, an intermodal logistics center, and various deepwater ports. The county is about 1.5 hours from Orlando, Tampa, Fort Myers, and West Palm Beach.

According to DataUSA, the local county economy employs 34,300 people as of 2020. The largest industries are Health Care & Social Assistance [6,071 people], Retail Trade [5,595 people], and Construction [3,356 people]. The highest-paying industries are Information [\$82,176], Wholesale Trade [\$53,542], and Public Administration (\$41,000).



ONE OF AMERICA'S BEST BROKERAGES



One of America's
Best Brokerages



APEX 2022 Top
National Producer



Most Influential
Business Leaders



Largest Commercial
Real Estate Brokers
in Tampa Bay



Ranked 210 on Inc.
5000 Regional List



For more information visit www.SVNsaunders.com

HEADQUARTERS

1723 Bartow Rd
Lakeland, FL 33801
863.648.1528

ORLANDO

605 E Robinson Street, Suite 410
Orlando, Florida 32801
386.438.5896

NORTH FLORIDA

356 NW Lake City Avenue
Lake City, Florida 32055
352.364.0070

GEORGIA

203 E Monroe Street
Thomasville, Georgia 31792
229.299.8600

ARKANSAS

112 W Center St, Suite 501
Fayetteville, Arkansas 72701
479.582.4113

©2024 Saunders Ralston Dantzler Real Estate. All SVN® Offices Independently Owned and Operated SVN | Saunders Ralston Dantzler Real Estate is a full-service land and commercial real estate brokerage representing buyers, sellers, investors, institutions, and landowners since 1996. We are recognized nationally as an authority on all types of land, including agriculture, ranch, recreation, and residential development. Our commercial real estate services include property management, leasing and tenant representation, valuation, business brokerage, and advisory and counseling services for office, retail, industrial, and multifamily properties. Our firm also features an auction company, a forestry division, international partnerships, and extensive expertise in conservation easements. Located in Florida, Georgia, and Alabama, we provide proven leadership and collaborative expertise backed by the strength of the SVN® global platform.

