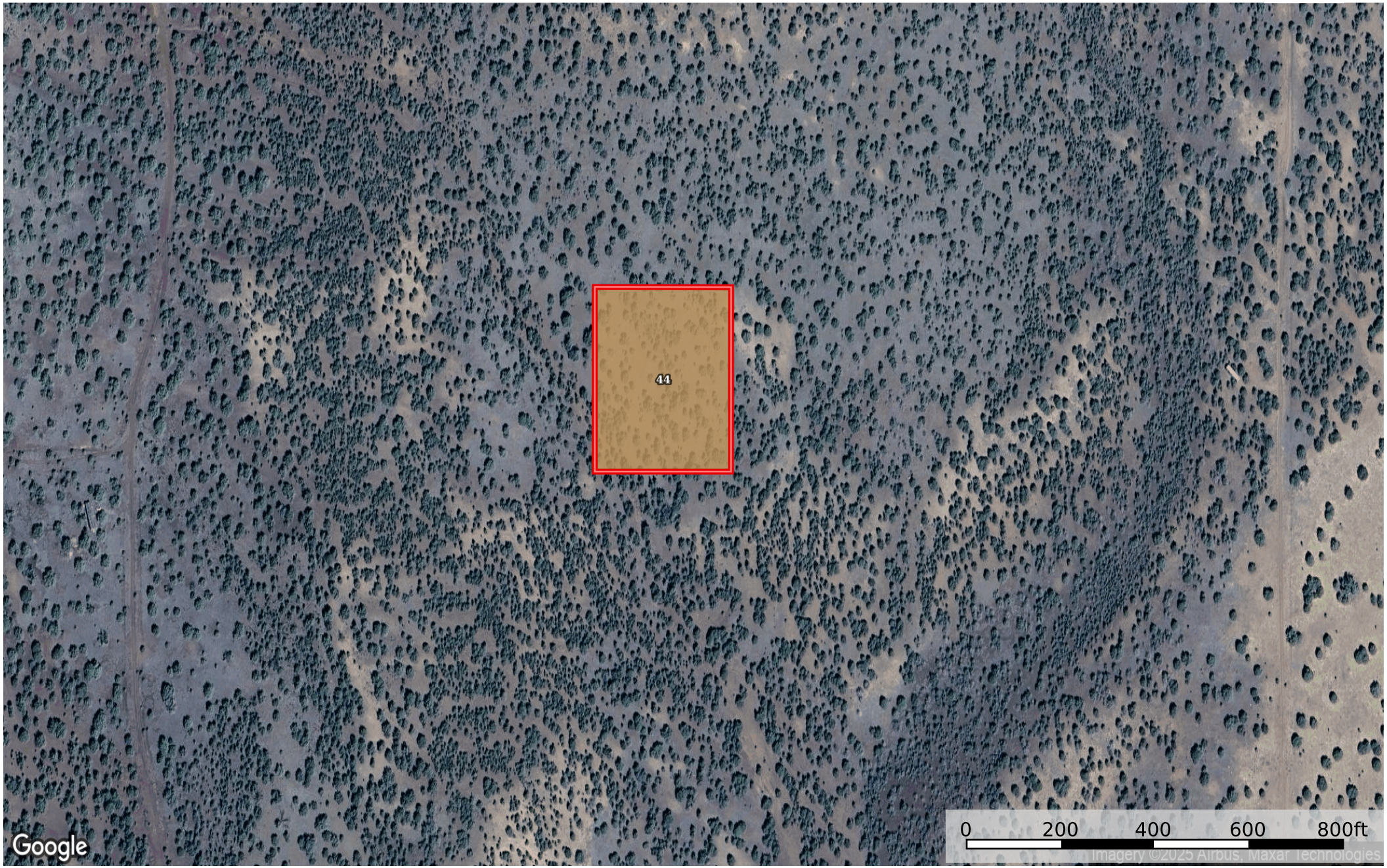


2.20 Acres Williams, Coconino County, AZ 206-53-014
Coconino County, Arizona, 2.2 AC +/-



 Boundary

|  Boundary 2.2 ac

SOIL CODE	SOIL DESCRIPTION	ACRES	%	CPI	NCCPI	CAP
44	Springerville very stony clay, 0 to 8 percent slopes	2.2	100	0	17	6s
TOTALS		2.2(*)	100%	-	17.0	6

(*) Total acres may differ in the second decimal compared to the sum of each acreage soil. This is due to a round error because we only show the acres of each soil with two decimal.

