

TOWNSHIP 26N.
SECTION 31 SE

RANGE 19W.

LAKE MOHAVE RANCHOS

BOOK 319

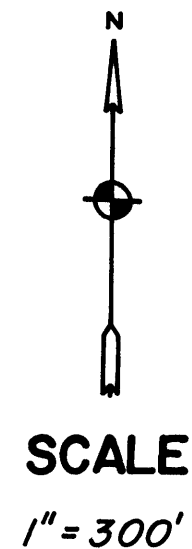
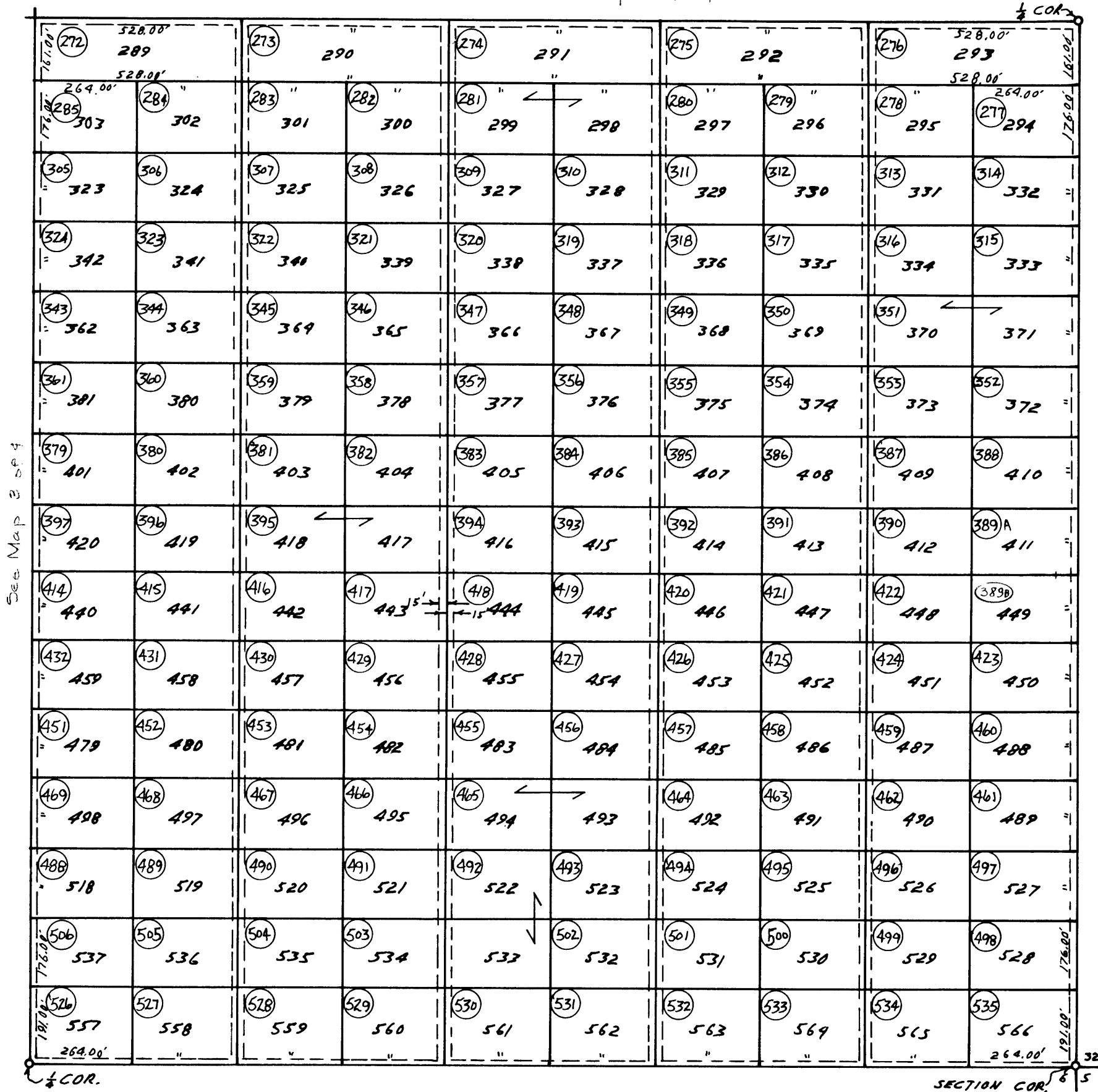
UNIT 5-A
FIRST AMENDED

MAP 17

4 of 4

CODE 1110

See Map 1 of 4



26N.-19W.-31 SE
SEPT. 30, 1980

MOHAVE COUNTY ASSESSOR
1965