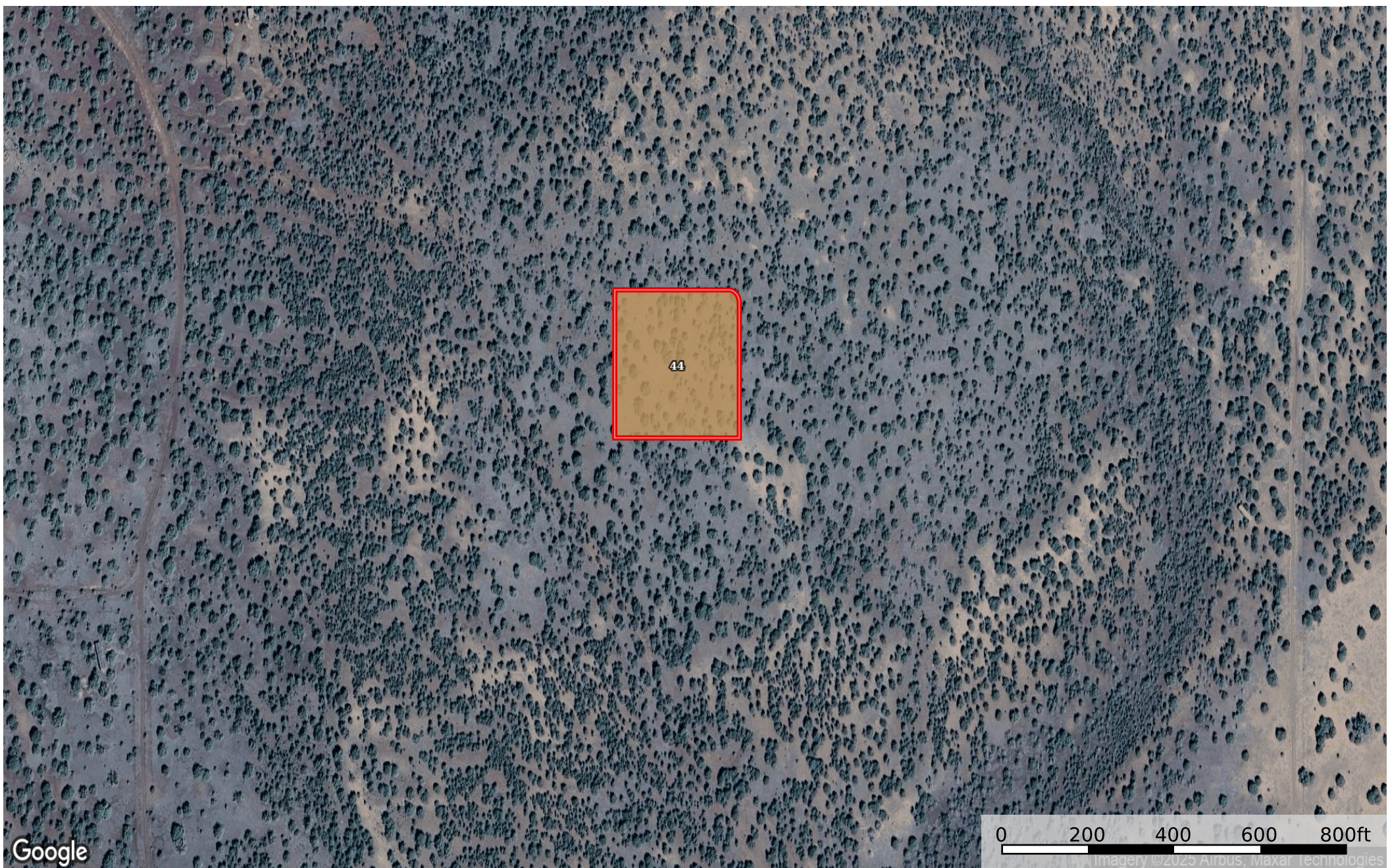


1.93 Acres Williams, Coconino County, AZ 206-53-013
Coconino County, Arizona, 1.93 AC +/-



Google

0 200 400 600 800ft
Imagery ©2025 Airbus, Maxar Technologies

 Boundary

id. The information contained herein was obtained from sources deemed to be reliable. Land id™ Services makes no warranties or guarantees as to the completeness or accuracy thereof.

Boundary 1.93 ac

SOIL CODE	SOIL DESCRIPTION	ACRES	%	CPI	NCCPI	CAP
44	Springerville very stony clay, 0 to 8 percent slopes	1.93	100	0	17	6s
TOTALS		1.93(*)	100%	-	17.0	6

(*) Total acres may differ in the second decimal compared to the sum of each acreage soil. This is due to a round error because we only show the acres of each soil with two decimal.

