



# LAKE PIERCE ISLAND

JENNINGS FISH CAMP ROAD  
LAKE WALES, FL 33898

---

**Bo Jahna**

863.557.0320

[bojahna@svn.com](mailto:bojahna@svn.com)

**Clayton Taylor**

863.255.7406

[clayton.taylor@svn.com](mailto:clayton.taylor@svn.com)

# Property Overview



**Sale Price** **\$969,500**

## PROPERTY OVERVIEW

Your Private Island Getaway on Lake Pierce – Lake Wales, FL

## OFFERING SUMMARY

**Lot Size:** **1.58 Acres**  
Price / Acre: \$613,608  
City: Lake Wales  
County: Polk  
Property Type: Land Other, Waterfront  
Video: [View Here](#)

Escape to your own private paradise with this exclusive 1.58-acre island on beautiful Lake Pierce in Lake Wales, Florida. Nestled in the heart of Polk County, this island offers the ultimate retreat for fishing, boating, or a family getaway.

### Key features include:

- 1179 sq. ft. Cabin – A cozy, well-equipped space perfect for relaxing after a day of adventure.
- Floating Dock – Conveniently tie up your boat and enjoy seamless access to the lake.
- Pontoon Boat – Included with the property, this pontoon boat makes exploring the lake and enjoying the water even easier.
- Utilities On-Site – Equipped with well, septic, and electricity, making this island both functional and ready for your enjoyment.
- Located just minutes from shopping, retail, and a variety of restaurants—many of which are accessible by boat—this private island is both a serene escape and a convenient hub for entertainment and leisure.

# Specifications & Features



## SPECIFICATIONS & FEATURES

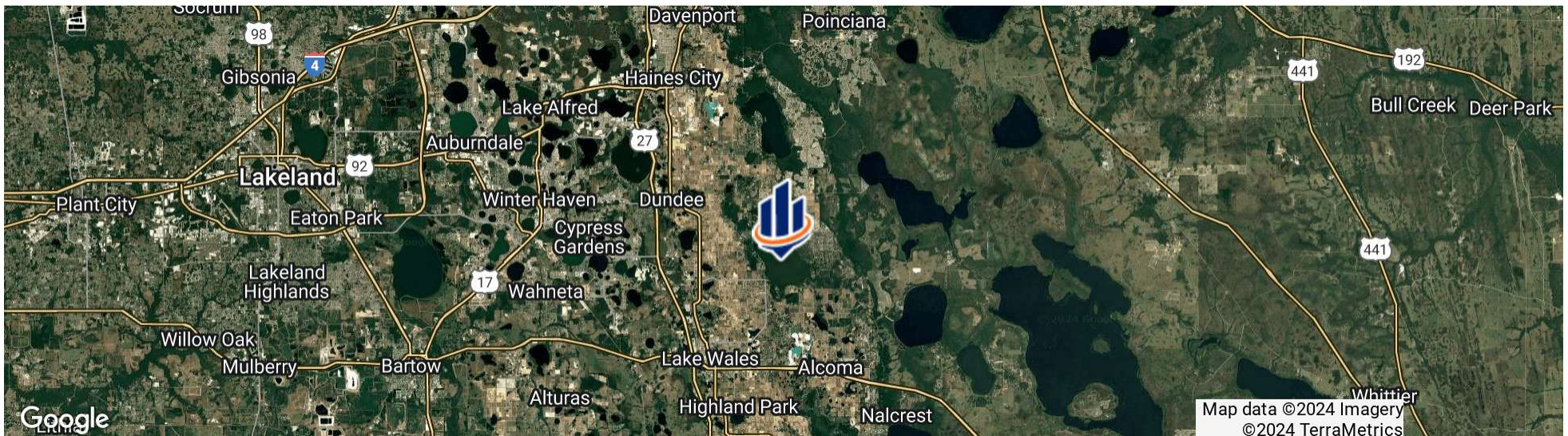
Land Types:	<ul style="list-style-type: none"><li>• Land Other</li><li>• Waterfront</li></ul>
Zoning / FLU:	FLU: A/RR
Lake Frontage / Water Features:	1000 ft +/-
Water Source & Utilities:	Well, Septic, and Electricity
Nearest Point of Interest:	About 3 miles to Dundee About 5 miles to Haines City About 5 miles to Lake Wales
Current Use:	Recreational
Potential Recreational / Alt Uses:	This property can be used for recreational fishing, boating, excursions
Land Cover:	Palm and Cypress Trees grass and natural vegetation. <ul style="list-style-type: none"><li>• Cabin built in 1964. Total Sq ft 1179 Living Sq ft 515 Includes bedroom</li></ul>
Structures & Year Built:	<ul style="list-style-type: none"><li>• kitchen</li><li>• bathroom</li><li>• large porch. Utility shed</li><li>• floating dock.</li></ul>

# Location



## LOCATION & DRIVING DIRECTIONS

- Parcel: 28-28-33-000000-014010
- GPS: 28.004463, -81.5233499
- Driving Directions:
- From Lake Wales take Highway 17 N 1.8 miles
  - Turn right on Timberland R and follow for 3 miles
  - Turn right on Canal Rd and go 2 miles then take a right on Jennings Fish Camp Rd

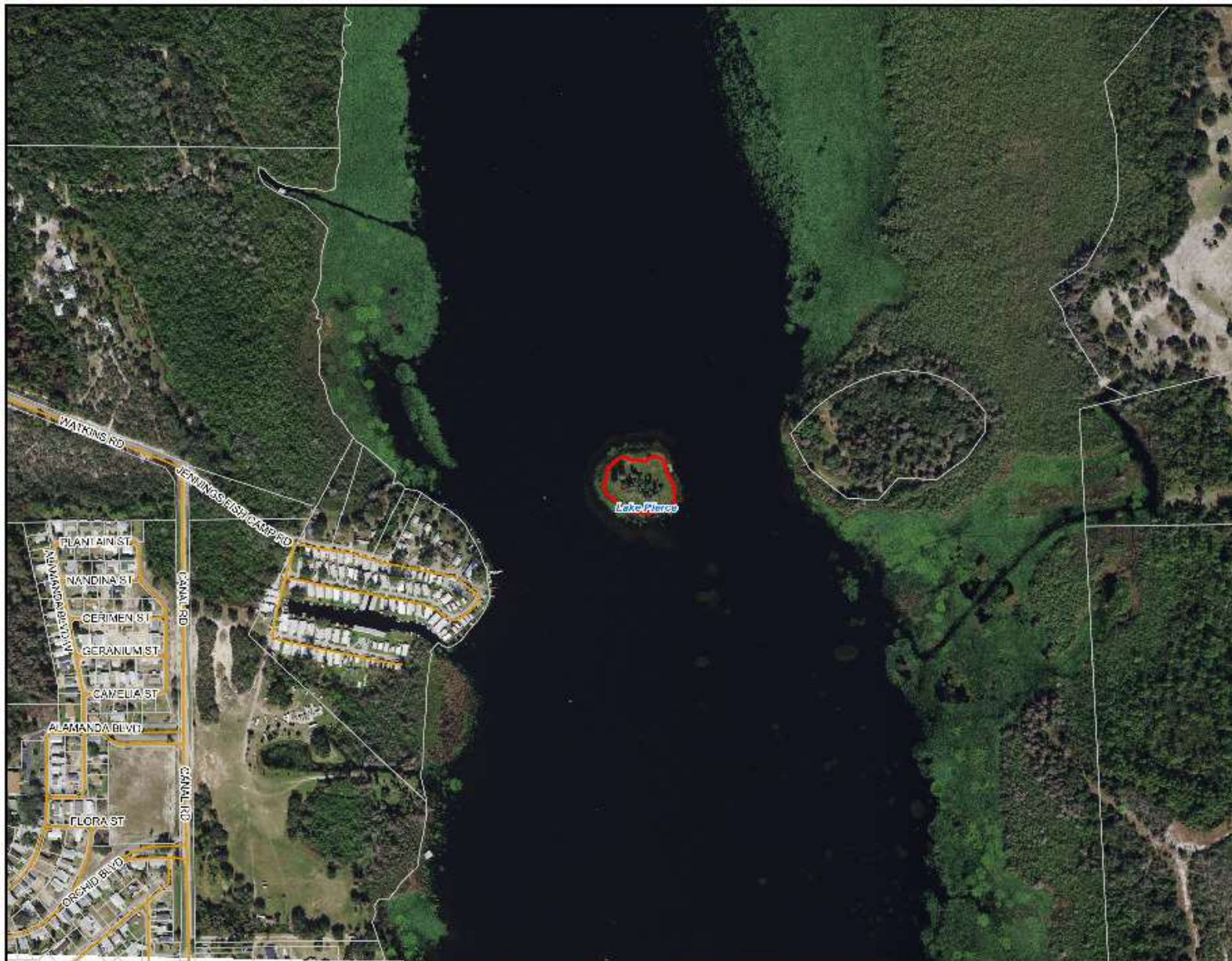




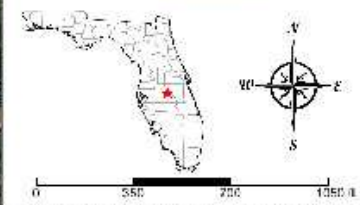
- County Boundaries
- Polygons Drawing
- Lines Drawing
- Labels Drawing
- Points Drawing
- Parcel Outlines



© 2023 SVN. SVN | Saunders Ralston Dentler Real Estate is a registered trademark. Licensed to SVN Shared Value Network. Any information displayed should be verified and is not guaranteed to be accurate by SVN Saunders Ralston Dentler. You may not copy or use this material without written consent from SVN Saunders Ralston Dentler.



- County Boundaries
- Polygons Drawing
- Lines Drawing
- Labels Drawing
- Points Drawing
- Streets MapWise
- Parcel Outlines
- Water Labels
- Water Labels
- Water Labels



© 2023 SVN. SVN | Saunders Ralston Dentler Real Estate is a registered trademark. Owned to SVN Shared Value Networks. Any information displayed should be verified and is not guaranteed to be accurate by SVN Saunders Ralston Dentler. You may not copy or use this material without written consent from SVN Saunders Ralston Dentler.

# Cabin Photos



# Additional Photos







## LAKE WALES

### POLK COUNTY

Founded	1917
Population	16,774 [2023]
Area	14
Website	<a href="http://lakewalesfl.gov">lakewalesfl.gov</a>
Major Employers	NuCor Steel AdventHealth Florida's Natural Growers Peterson Industries

The city of Lake Wales, Florida was officially incorporated in April 1917. The city developed quickly when in 1925, the Atlantic Coast Line Railroad constructed a new railway connecting Haines City to Everglades City. With the development of this line, a new depot was opened in Lake Wales.

Located west of Lake Kissimmee and east of Tampa, the city of Lake Wales is part of the Lakeland–Winter Haven Metropolitan Statistical Area of Central Florida. The city is geographically located near the center of Florida's peninsula, right on the Lake Wales Ridge upland area. Currently, 9 million people live within 100 miles of the city.

The city of Lake Wales serves as an excellent location for commercial real estate. Featuring tenants like Kegel, Merlin Entertainment, TruGreen, and AT&T, the Lake Wales Commerce and Technology Park is on the busy U.S. Route 27 just south of the city. Bok Tower Gardens is a nearby national historic landmark featuring a 205 foot carillon tower atop one of Florida's highest points.



# ONE OF AMERICA'S BEST BROKERAGES



One of America's  
Best Brokerages



APEX 2022 Top  
National Producer



Most Influential  
Business Leaders



Largest Commercial  
Real Estate Brokers  
in Tampa Bay



Ranked 210 on Inc.  
5000 Regional List



For more information visit [www.SVNsaunders.com](http://www.SVNsaunders.com)

**HEADQUARTERS**

1723 Bartow Rd  
Lakeland, FL 33801  
863.648.1528

**ORLANDO**

605 E Robinson Street, Suite 410  
Orlando, Florida 32801  
386.438.5896

**NORTH FLORIDA**

356 NW Lake City Avenue  
Lake City, Florida 32055  
352.364.0070

**GEORGIA**

203 E Monroe Street  
Thomasville, Georgia 31792  
229.299.8600

**ARKANSAS**

112 W Center St, Suite 501  
Fayetteville, Arkansas 72701  
479.582.4113

©2024 Saunders Ralston Dantzler Real Estate. All SVN® Offices Independently Owned and Operated SVN | Saunders Ralston Dantzler Real Estate is a full-service land and commercial real estate brokerage representing buyers, sellers, investors, institutions, and landowners since 1996. We are recognized nationally as an authority on all types of land, including agriculture, ranch, recreation, and residential development. Our commercial real estate services include property management, leasing and tenant representation, valuation, business brokerage, and advisory and counseling services for office, retail, industrial, and multifamily properties. Our firm also features an auction company, a forestry division, international partnerships, and extensive expertise in conservation easements. Located in Florida, Georgia, and Alabama, we provide proven leadership and collaborative expertise backed by the strength of the SVN® global platform.

