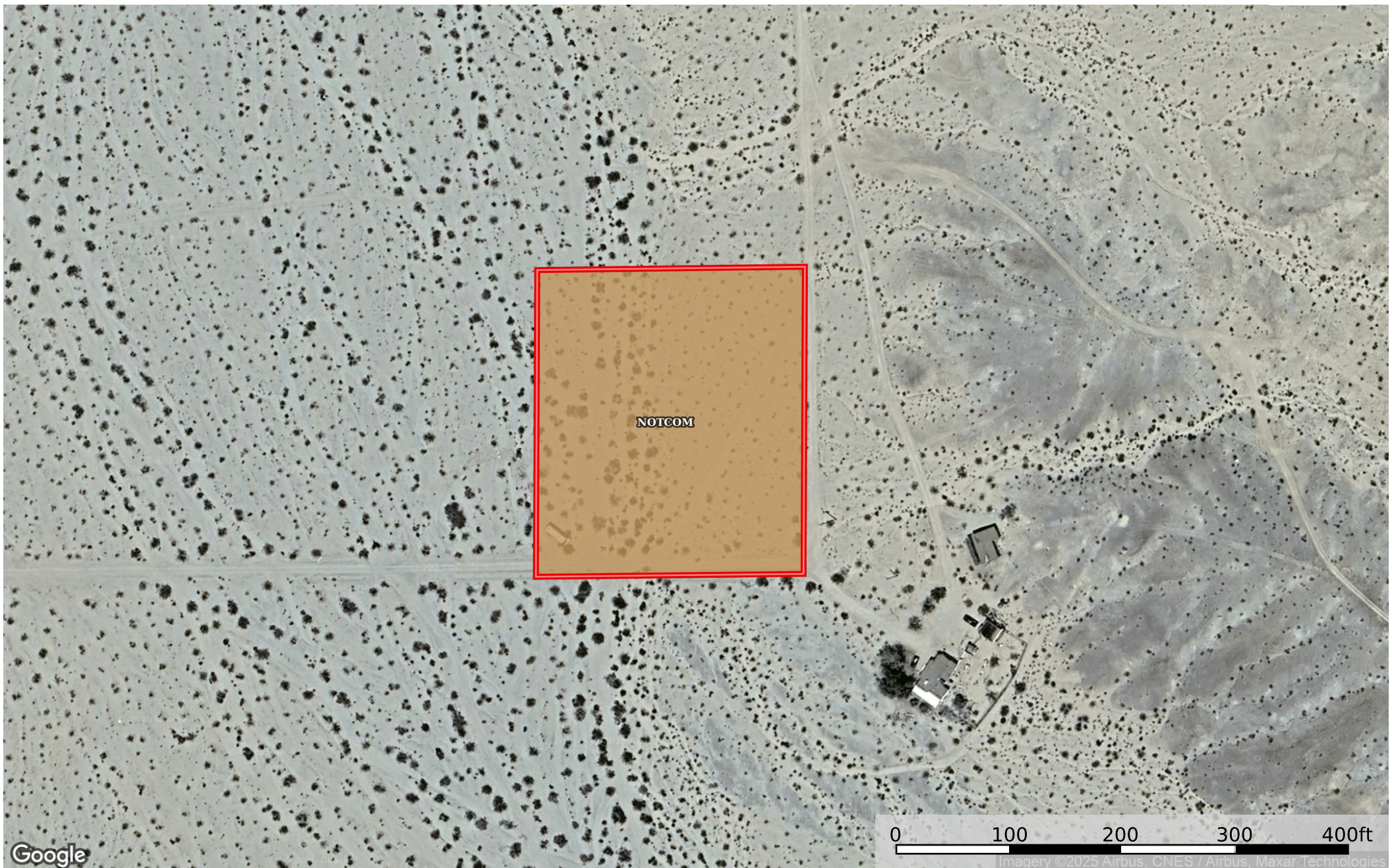


1.43 Acres Twentynine Palms, San Bernardino County, CA
San Bernardino County, California, 1.43 AC +/-



 Boundary

Boundary 1.47 ac

SOIL CODE	SOIL DESCRIPTION	ACRES	%	CPI	NCCPI	CAP
NOTCOM	No Digital Data Available	1.47	100	0	-	-
TOTALS		1.47(*)	100%	-	-	-

(*) Total acres may differ in the second decimal compared to the sum of each acreage soil. This is due to a round error because we only show the acres of each soil with two decimal.

