

UNIT E-1, SUBDIVISION

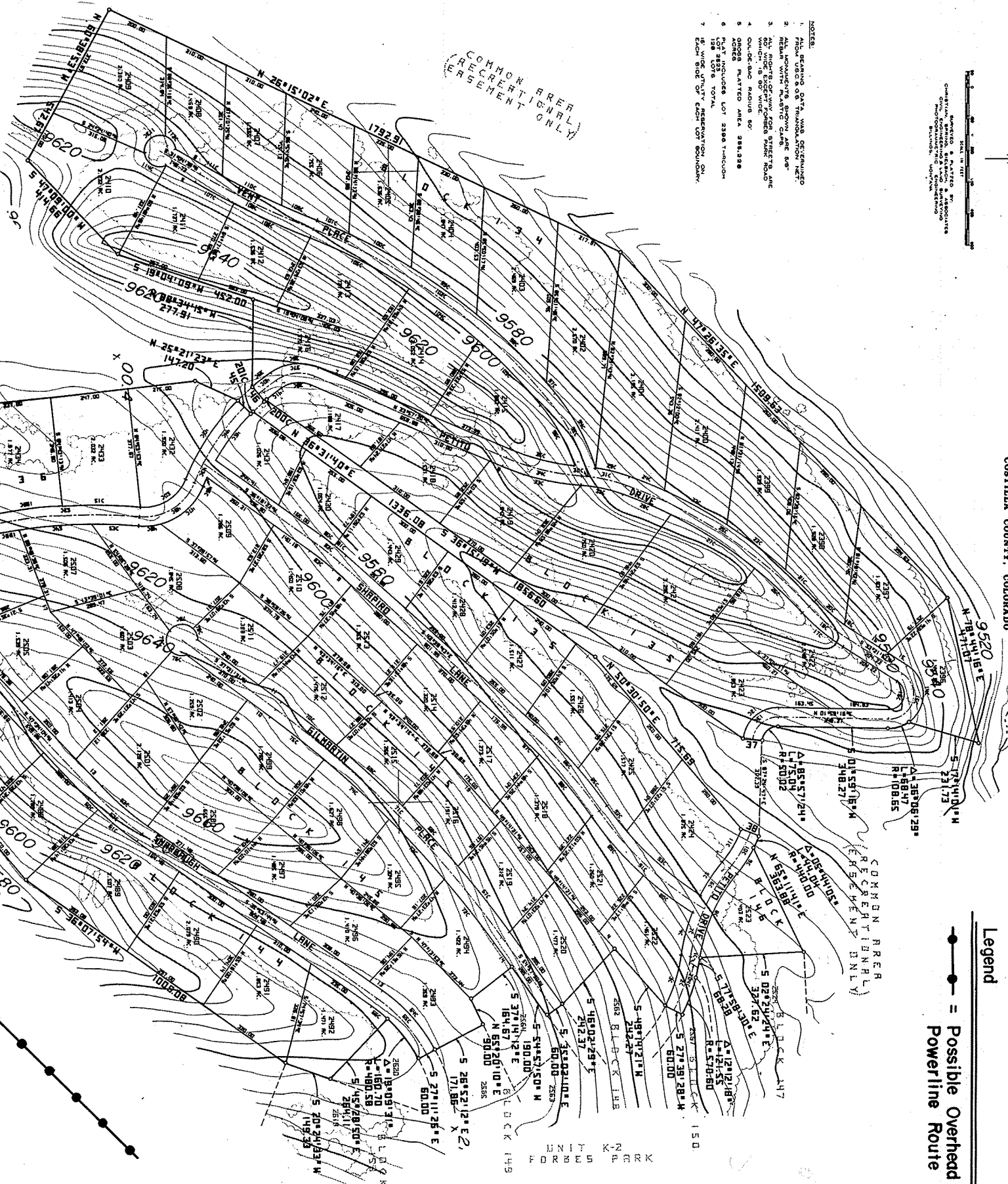
FORBES PARK

SITUATED IN A PORTION OF THE SANGRE DE CRISTO GRANT IN T.30 S., R.68 W., 6th P.M., COSTILLA COUNTY, COLORADO



Scale bar showing 0 to 100 feet.

- NOTES:
1. THIS MAP IS A PART OF THE SANGRE DE CRISTO GRANT, T.30 S., R.68 W., 6th P.M., COSTILLA COUNTY, COLORADO.
 2. ALL LOTS ARE 1/4 SECTION SIZES.
 3. ALL LOTS ARE 1/4 SECTION SIZES.
 4. ALL LOTS ARE 1/4 SECTION SIZES.
 5. ALL LOTS ARE 1/4 SECTION SIZES.
 6. ALL LOTS ARE 1/4 SECTION SIZES.
 7. ALL LOTS ARE 1/4 SECTION SIZES.



Legend

—●— = Possible Overhead Powerline Route

DEFENDERS: *Paul R. Campbell*

STATE OF COLORADO, *Paul R. Campbell*

COUNTY OF COSTILLA, *Paul R. Campbell*

COMMISSIONER OF LANDS, *Paul R. Campbell*

STATE OF COLORADO, *Paul R. Campbell*

COUNTY OF COSTILLA, *Paul R. Campbell*

STATE OF COLORADO, *Paul R. Campbell*

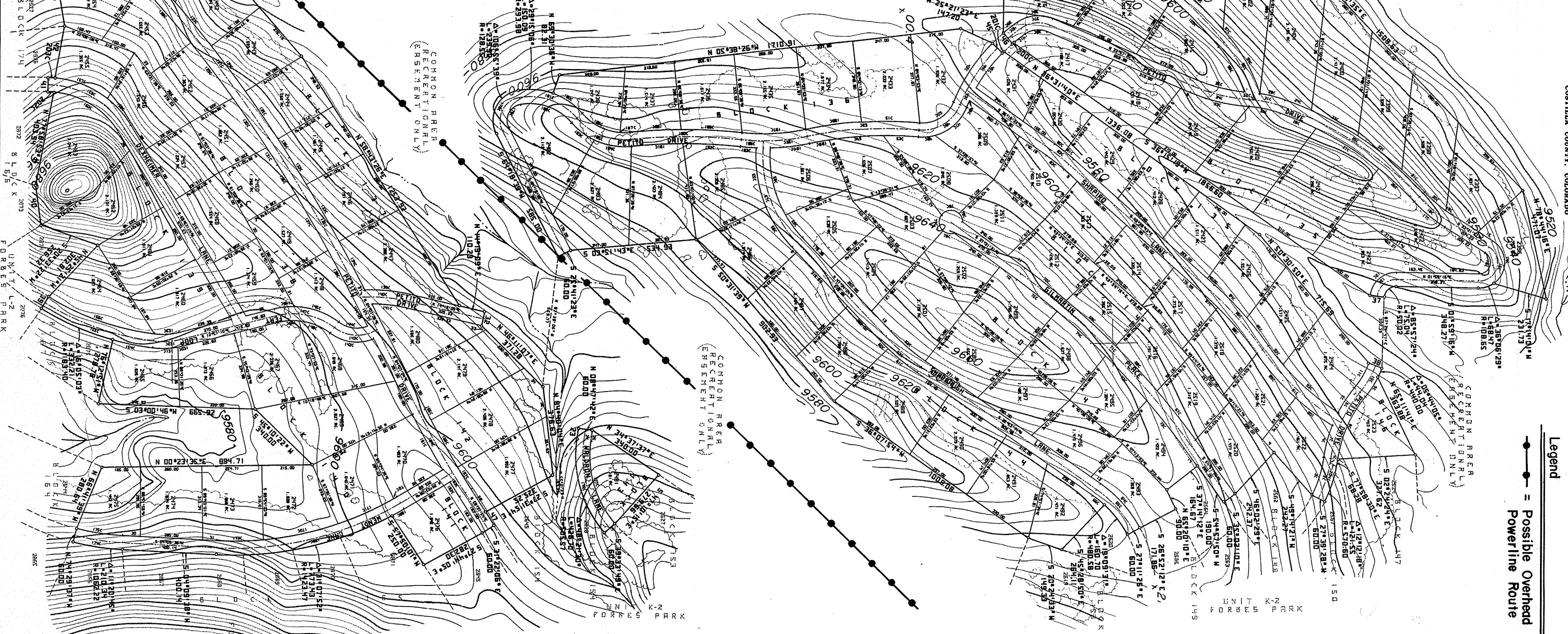
COUNTY OF COSTILLA, *Paul R. Campbell*

STATE OF COLORADO, *Paul R. Campbell*

COUNTY OF COSTILLA, *Paul R. Campbell*

STATE OF COLORADO, *Paul R. Campbell*

COUNTY OF COSTILLA, *Paul R. Campbell*



Lot No.	Area (Acres)	Owner
1	0.25	Paul R. Campbell
2	0.25	Paul R. Campbell
3	0.25	Paul R. Campbell
4	0.25	Paul R. Campbell
5	0.25	Paul R. Campbell
6	0.25	Paul R. Campbell
7	0.25	Paul R. Campbell
8	0.25	Paul R. Campbell
9	0.25	Paul R. Campbell
10	0.25	Paul R. Campbell
11	0.25	Paul R. Campbell
12	0.25	Paul R. Campbell
13	0.25	Paul R. Campbell
14	0.25	Paul R. Campbell
15	0.25	Paul R. Campbell
16	0.25	Paul R. Campbell
17	0.25	Paul R. Campbell
18	0.25	Paul R. Campbell
19	0.25	Paul R. Campbell
20	0.25	Paul R. Campbell
21	0.25	Paul R. Campbell
22	0.25	Paul R. Campbell
23	0.25	Paul R. Campbell
24	0.25	Paul R. Campbell
25	0.25	Paul R. Campbell
26	0.25	Paul R. Campbell
27	0.25	Paul R. Campbell
28	0.25	Paul R. Campbell
29	0.25	Paul R. Campbell
30	0.25	Paul R. Campbell
31	0.25	Paul R. Campbell
32	0.25	Paul R. Campbell
33	0.25	Paul R. Campbell
34	0.25	Paul R. Campbell
35	0.25	Paul R. Campbell
36	0.25	Paul R. Campbell
37	0.25	Paul R. Campbell
38	0.25	Paul R. Campbell
39	0.25	Paul R. Campbell
40	0.25	Paul R. Campbell
41	0.25	Paul R. Campbell
42	0.25	Paul R. Campbell
43	0.25	Paul R. Campbell
44	0.25	Paul R. Campbell
45	0.25	Paul R. Campbell
46	0.25	Paul R. Campbell
47	0.25	Paul R. Campbell
48	0.25	Paul R. Campbell
49	0.25	Paul R. Campbell
50	0.25	Paul R. Campbell
51	0.25	Paul R. Campbell
52	0.25	Paul R. Campbell
53	0.25	Paul R. Campbell
54	0.25	Paul R. Campbell
55	0.25	Paul R. Campbell
56	0.25	Paul R. Campbell
57	0.25	Paul R. Campbell
58	0.25	Paul R. Campbell
59	0.25	Paul R. Campbell
60	0.25	Paul R. Campbell
61	0.25	Paul R. Campbell
62	0.25	Paul R. Campbell
63	0.25	Paul R. Campbell
64	0.25	Paul R. Campbell
65	0.25	Paul R. Campbell
66	0.25	Paul R. Campbell
67	0.25	Paul R. Campbell
68	0.25	Paul R. Campbell
69	0.25	Paul R. Campbell
70	0.25	Paul R. Campbell
71	0.25	Paul R. Campbell
72	0.25	Paul R. Campbell
73	0.25	Paul R. Campbell
74	0.25	Paul R. Campbell
75	0.25	Paul R. Campbell
76	0.25	Paul R. Campbell
77	0.25	Paul R. Campbell
78	0.25	Paul R. Campbell
79	0.25	Paul R. Campbell
80	0.25	Paul R. Campbell
81	0.25	Paul R. Campbell
82	0.25	Paul R. Campbell
83	0.25	Paul R. Campbell
84	0.25	Paul R. Campbell
85	0.25	Paul R. Campbell
86	0.25	Paul R. Campbell
87	0.25	Paul R. Campbell
88	0.25	Paul R. Campbell
89	0.25	Paul R. Campbell
90	0.25	Paul R. Campbell
91	0.25	Paul R. Campbell
92	0.25	Paul R. Campbell
93	0.25	Paul R. Campbell
94	0.25	Paul R. Campbell
95	0.25	Paul R. Campbell
96	0.25	Paul R. Campbell
97	0.25	Paul R. Campbell
98	0.25	Paul R. Campbell
99	0.25	Paul R. Campbell
100	0.25	Paul R. Campbell