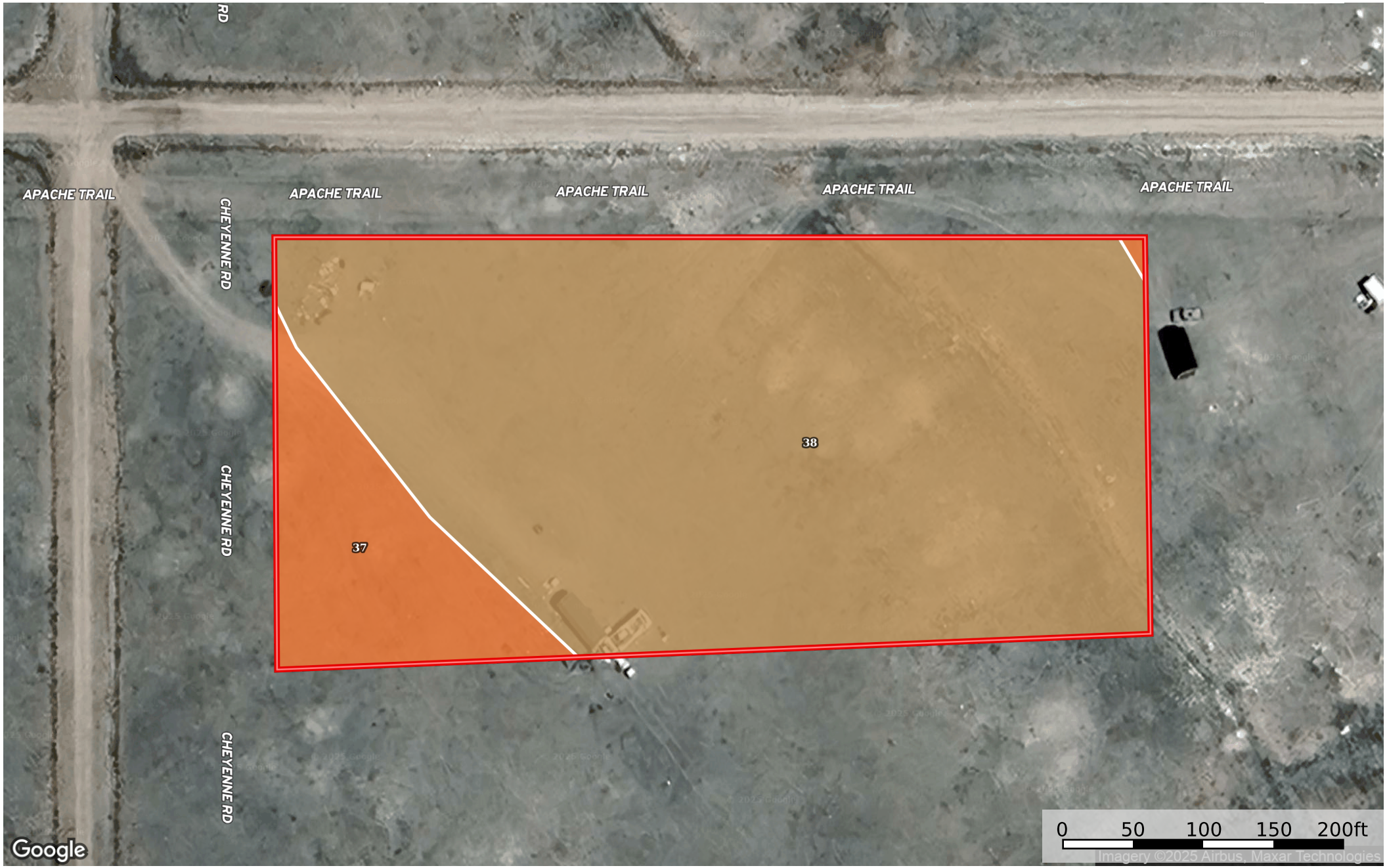




4.22 Acres Hartsel, Park County, CO 6622
Park County, Colorado, 4.22 AC +/-



 Boundary

0 50 100 150 200ft
Imagery ©2025 Airbus, Maxar Technologies

 The information contained herein was obtained from sources deemed to be reliable. Land id™ Services makes no warranties or guarantees as to the completeness or accuracy thereof.

|  Boundary 4.22 ac

| SOIL CODE | SOIL DESCRIPTION | ACRES | % | CPI | NCCPI | CAP |
|-----------|---|---------|-------|-----|-------|-----|
| 38 | Gebson very gravelly loam, 5 to 25 percent slopes | 3.64 | 86.26 | 0 | 5 | 6e |
| 37 | Gebson sandy loam, 2 to 10 percent slopes | 0.58 | 13.74 | 0 | 6 | 6e |
| TOTALS | | 4.22(*) | 100% | - | 5.14 | 6.0 |

(*) Total acres may differ in the second decimal compared to the sum of each acreage soil. This is due to a round error because we only show the acres of each soil with two decimal.

