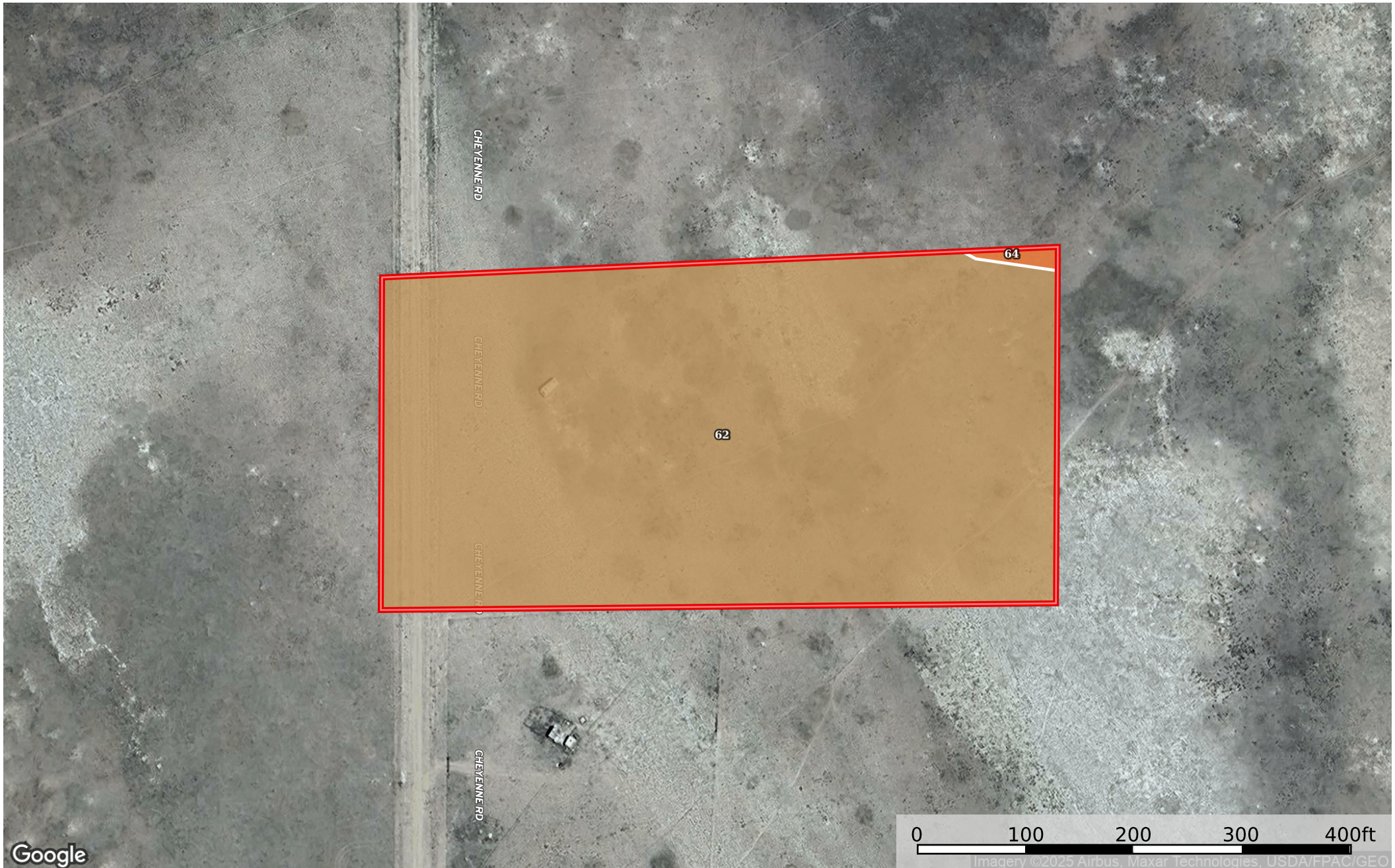
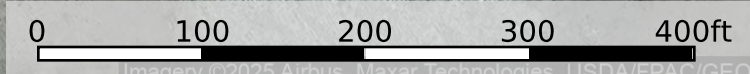


5 Acres Hartsel, Park County, CO 6538
Park County, Colorado, 5 AC +/-



Google



 Boundary

 Boundary 4.53 ac

SOIL CODE	SOIL DESCRIPTION	ACRES	%	CPI	NCCPI	CAP
62	Kenosha-Newett loams, 1 to 10 percent slopes complex	4.5	99.34	0	4	6e
64	Lanswick loam, 1 to 5 percent slopes	0.03	0.66	0	9	6c
TOTALS		4.53(*)	100%	-	4.03	6.0

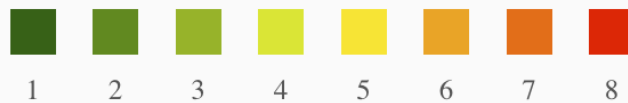
(*) Total acres may differ in the second decimal compared to the sum of each acreage soil. This is due to a round error because we only show the acres of each soil with two decimal.

Capability Legend

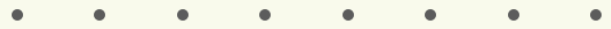
Increased Limitations and Hazards

Decreased Adaptability and Freedom of Choice Users

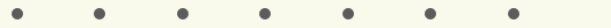
Land, Capability



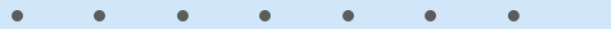
'Wild Life'



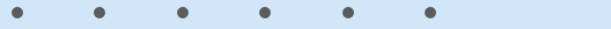
Forestry



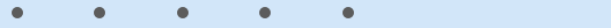
Limited



Moderate



Intense



Limited



Moderate



Intense



Very Intense



Grazing Cultivation

(c) climatic limitations (e) susceptibility to erosion

(s) soil limitations within the rooting zone (w) excess of water