

Scale: 1 in. = 300 ft.

Plot of 180.2 acres of land surveyed and shown on parcel A, B, C, and D, being the residue of the D.L. ARMISTEAD ESTATE (see D.B. 29, p. 34). Located in FARMVILLE DISTRICT, PRINCE EDWARD COUNTY, VIRGINIA.

NOV. 24, 1976

F.B. 130-2129  
RALPH P. HINES, C.L.S.



VIRGINIA:

In the Clerk's Office of the Circuit Court of Prince Edward County, February 16, 1977.

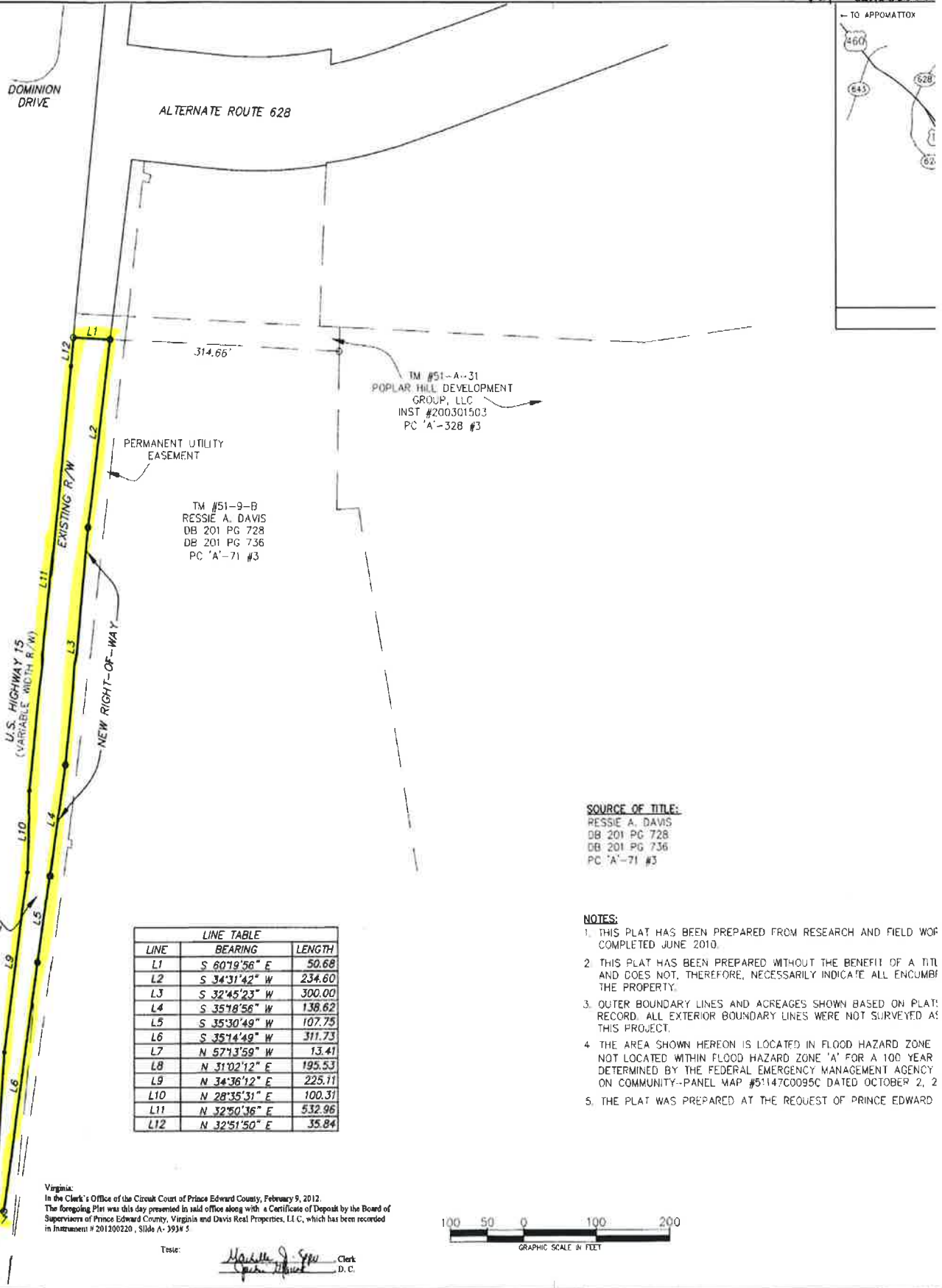
The foregoing plot was this day presented in said office along with and as a part of deed from Augusta W. Hunt et al to Floyd C. Davis et al, which said deed has been recorded in Deed Book 201 at page 745.

Testo:

*Theron A. Tomack*

W

Inst # 201200220



0.919 ACRES  
NEW VDOT R/W

LINE	BEARING	LENGTH
L1	S 80°19'56" E	50.68
L2	S 34°31'42" W	234.60
L3	S 32°45'23" W	300.00
L4	S 35°18'56" W	138.62
L5	S 35°30'49" W	107.75
L6	S 35°14'49" W	311.73
L7	N 57°13'59" W	13.41
L8	N 31°02'12" E	195.53
L9	N 34°36'12" E	225.11
L10	N 28°35'31" E	100.31
L11	N 32°50'36" E	532.96
L12	N 32°51'50" E	35.84

**SOURCE OF TITLE:**  
 RESSIE A. DAVIS  
 DB 201 PG 728  
 DB 201 PG 736  
 PC 'A'-71 #3

- NOTES:**
1. THIS PLAT HAS BEEN PREPARED FROM RESEARCH AND FIELD WORK COMPLETED JUNE 2010.
  2. THIS PLAT HAS BEEN PREPARED WITHOUT THE BENEFIT OF A TITLE AND DOES NOT, THEREFORE, NECESSARILY INDICATE ALL ENCUMBRANCES ON THE PROPERTY.
  3. OUTER BOUNDARY LINES AND ACRESAGES SHOWN BASED ON PLAT RECORD. ALL EXTERIOR BOUNDARY LINES WERE NOT SURVEYED AS THIS PROJECT.
  4. THE AREA SHOWN HEREON IS LOCATED IN FLOOD HAZARD ZONE 'A' FOR A 100 YEAR DETERMINED BY THE FEDERAL EMERGENCY MANAGEMENT AGENCY ON COMMUNITY-PANEL MAP #5147C0095C DATED OCTOBER 2, 2009.
  5. THE PLAT WAS PREPARED AT THE REQUEST OF PRINCE EDWARD COUNTY.

Virginia  
 In the Clerk's Office of the Circuit Court of Prince Edward County, February 9, 2012.  
 The foregoing Plat was this day presented in said office along with a Certificate of Deposit by the Board of Supervisors of Prince Edward County, Virginia and Davis Real Properties, L.L.C., which has been recorded in Instrument # 201200220, Slide A-393# 5.

Tessie: *[Signature]* Clerk  
 D. C.

