

Trace Chico Creek is 101 acres fronting the Natchez Trace Parkway in **Chickasaw County**, Section 22, Township 14 South, Range 3 East. The timber consists of 40 acres of 18 year pine plantation with the balance being 40 to 60 year hardwoods. Chico Creek traverses the northern portion of the property creating the possibility to construct water a impound for waterfowl. The southern end of the tract slopes to the northeast into the creek bottom with elevations from 310 to 270 feet. Access to the property is off County Road 93 with utilities along the roadway. Only four miles south of Tombigbee National Forest makes this a great location with merchantable timber and good wildlife habitat for a hunting property. Additional 188 +/- acres to the east may be available.

\$2350/acre / \$237,021.00

Contact: J Parker Sartain 601.506.2398

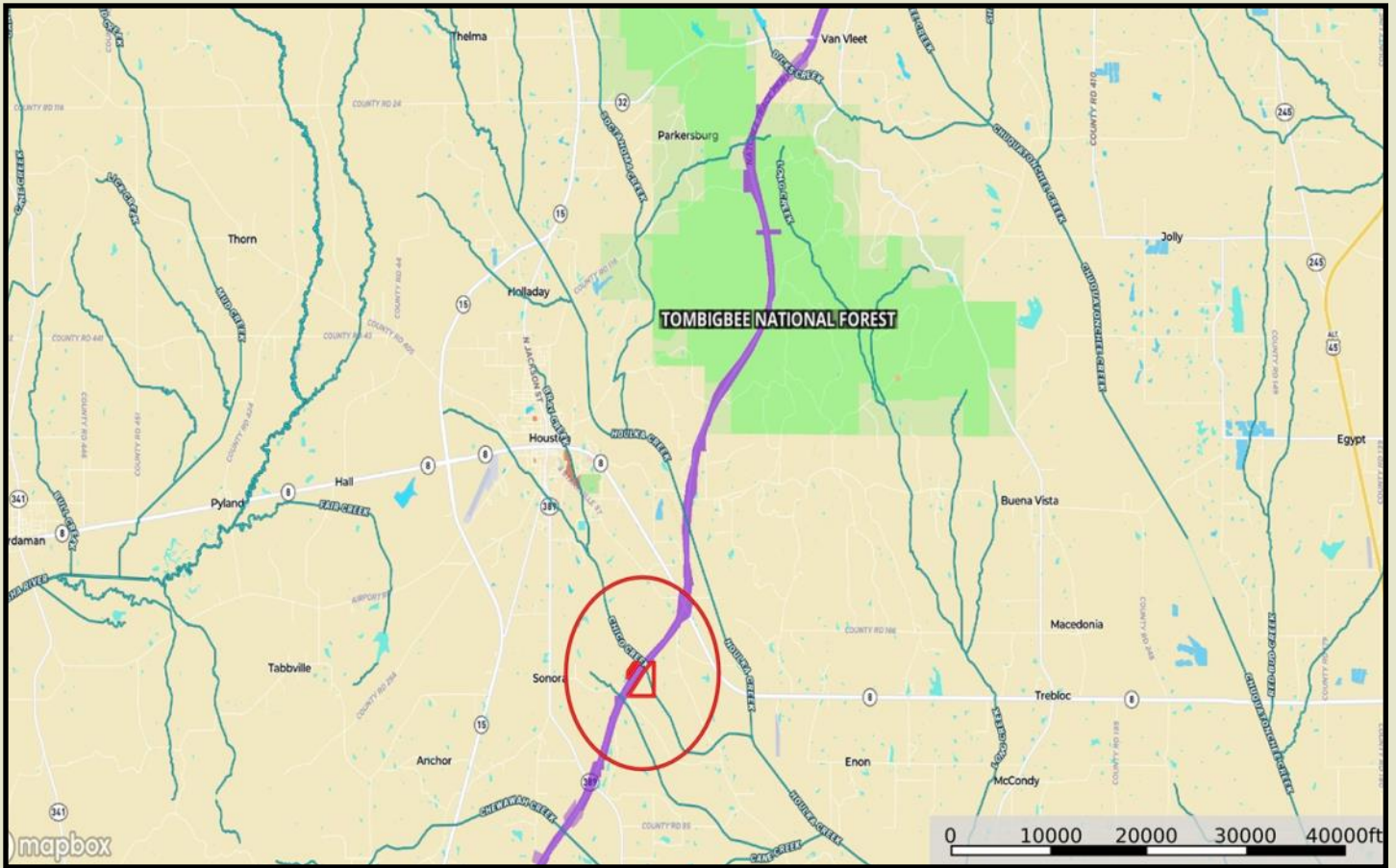
"Guiding Your Land Decisions for Over 60 Years"

FARM | TIMBER | HUNTING

Sartain's Heritage Properties, LLC

601-856-2720 • www.SartainsHeritage.com

All information contained herein is supplied by sources deemed reliable, but is not guaranteed by Sartain's Heritage Properties, its Brokers or Agents. Properties are subject to errors, omissions, correction, price change, prior sale or withdrawal without notice. All Buyer's agents are required be identified on the first contact with Broker/Agents of Sartain's Heritage Properties and must accompany the buyer on showings to receive full fee participation. Otherwise, the fee participation shall be at the sole discretion of the Broker and Sartain's Heritage Properties.



All information contained herein is supplied by sources deemed reliable, but is not guaranteed by Sartain's Heritage Properties, its Brokers or Agents. Properties are subject to errors, omissions, correction, price change, prior sale or withdrawal without notice. All Buyer's agents are required be identified on the first contact with Broker/Agents of Sartain's Heritage Properties and must accompany the buyer on showings to receive full fee participation. Otherwise, the fee participation shall be at the sole discretion of the Broker and Sartain's Heritage Properties.



All information contained herein is supplied by sources deemed reliable, but is not guaranteed by Sartain's Heritage Properties, its Brokers or Agents. Properties are subject to errors, omissions, correction, price change, prior sale or withdrawal without notice. All Buyer's agents are required be identified on the first contact with Broker/Agents of Sartain's Heritage Properties and must accompany the buyer on showings to receive full fee participation. Otherwise, the fee participation shall be at the sole discretion of the Broker and Sartain's Heritage Properties.