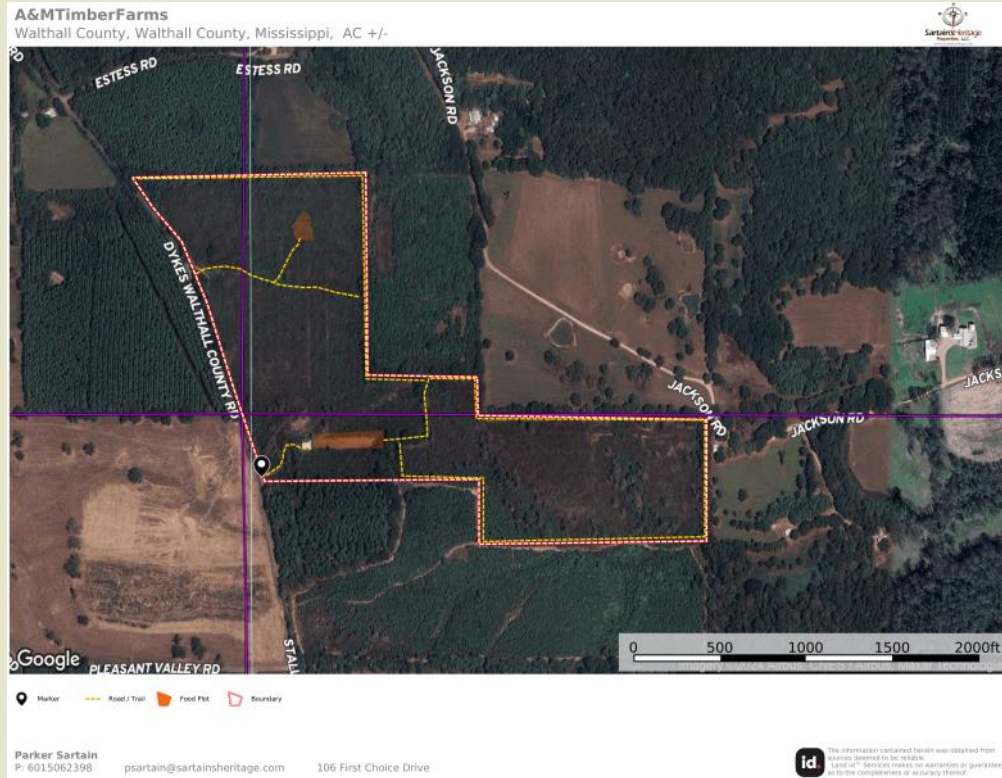




Sartain's Heritage
Properties, LLC.
www.SartainsHeritage.com

A & M Timber 63 Acres +/- Pike County, MS



CONTACT:

JOE MALLARD
601-927-8222
Jmallard@sartainsheritage.com

Sartain's Heritage Properties
106 First Choice Drive
Madison, MS 39110
Phone: 601-856-2720
Fax: 601-853-6765
www.SartainsHeritage.com

Property: A&M Timber farm consists of 63+/- acres located on the eastern side of Pike County on the county line with Walthall County. Approximately six miles southwest of Tylertown, MS on Stallings Bridge Road. The timber was cut two years ago and has not been replanted. Access is good along the paved county road and utilities are available. The 40x40 barn located on the property is in good condition. Fire lanes and interior roads have been cleared.

Priced at \$230,000



All information contained herein is supplied by sources deemed reliable, but is not guaranteed by Sartain's Heritage Properties, its Brokers or Agents. Properties are subject to errors, omissions, correction, price change, prior sale or withdrawal without notice.