

TOWNSHIP 23N  
SECTION 31NE.

RANGE 18W

GOLDEN MOHAVE ESTATES

BOOK 308

UNIT ONE

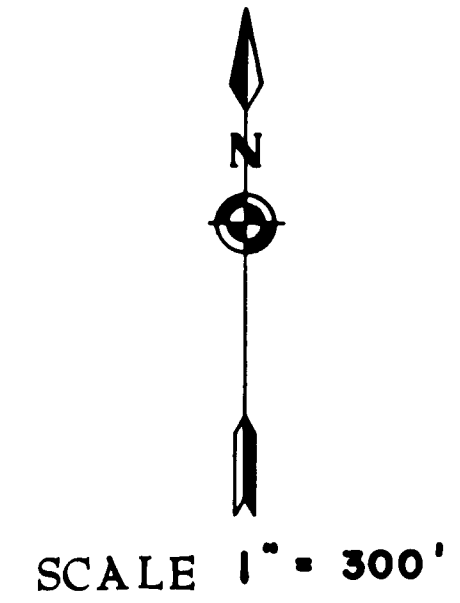
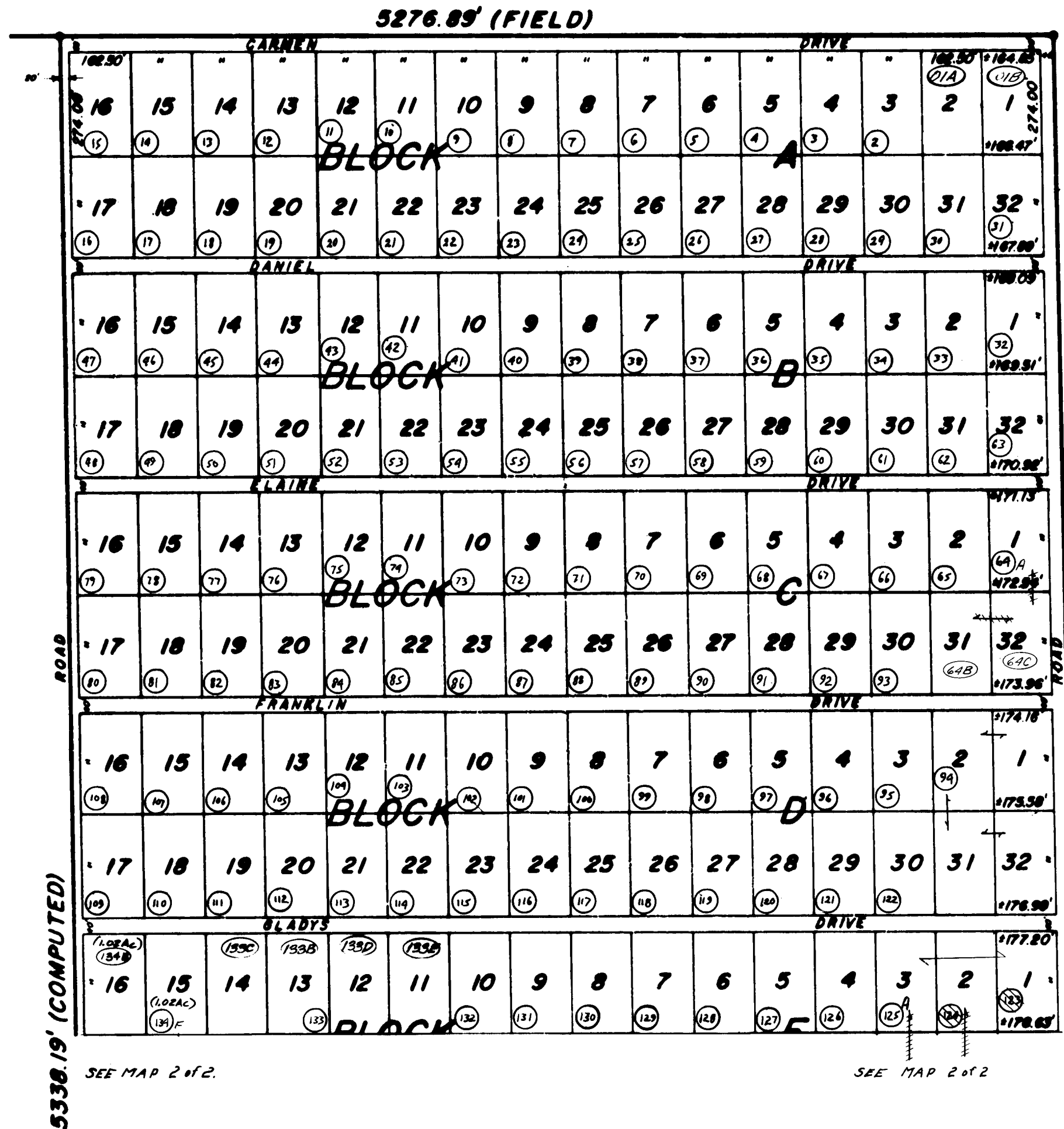
Rec. OCT. 2, 1961

Fee No. 107150

MAP 29

1 of 2

Code 1130



23N-18W-31NE.

Date Nov. 23, 2001

MOHAVE COUNTY ASSESSOR