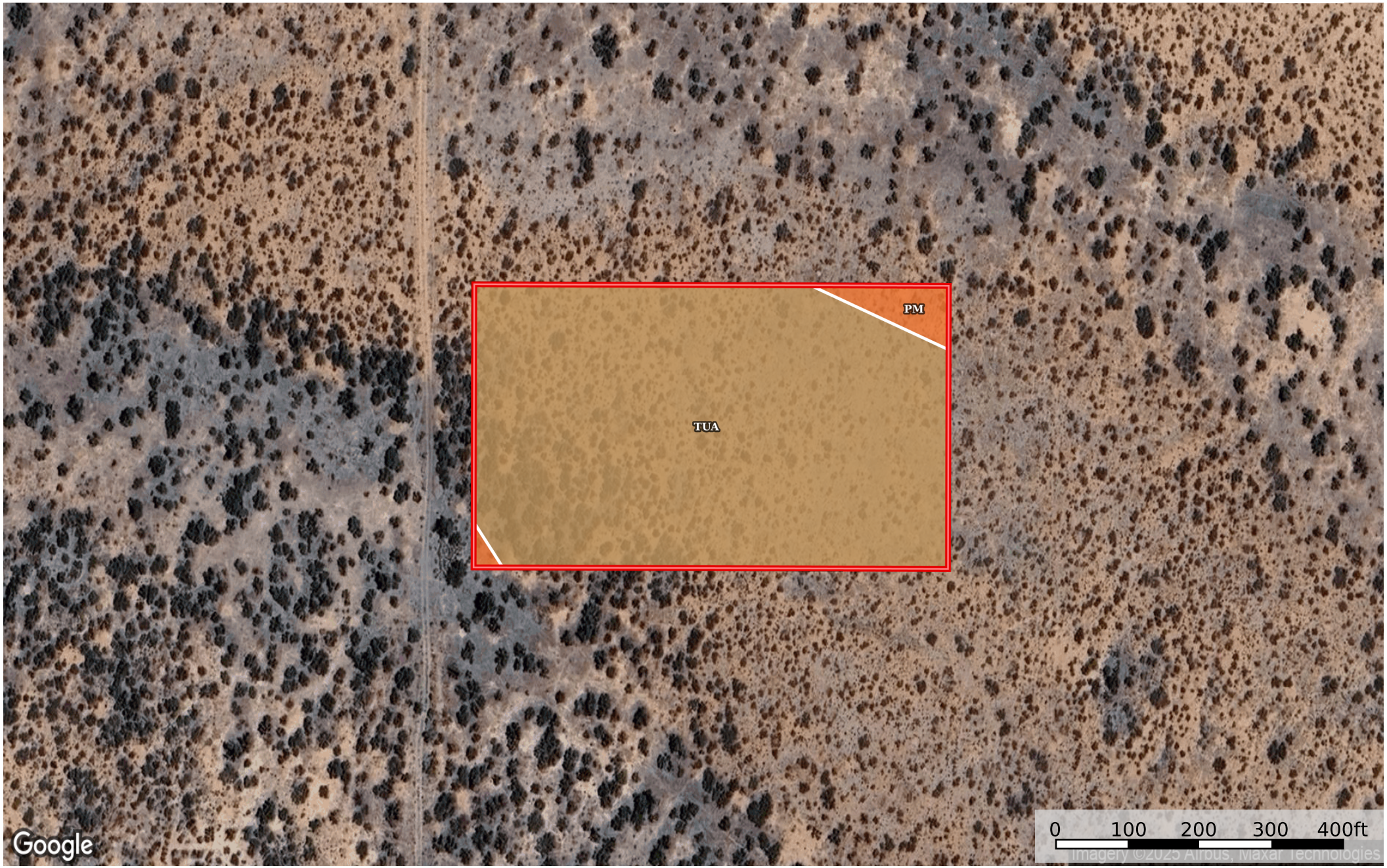
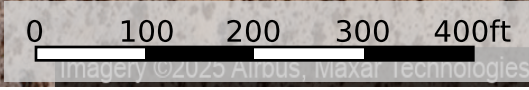


5.02 Acres Pearce, Cochise County, AZ 401-53-050  
Cochise County, Arizona, 5.02 AC +/-



Google



 Boundary



 Boundary 5.03 ac

SOIL CODE	SOIL DESCRIPTION	ACRES	%	CPI	NCCPI	CAP
TuA	Tubac sandy loam, 0 to 2 percent slopes	4.84	96.22	0	26	6s
Pm	Pima loam	0.19	3.78	0	34	6c
TOTALS		5.03(*)	100%	-	26.3	6.0

(\*) Total acres may differ in the second decimal compared to the sum of each acreage soil. This is due to a round error because we only show the acres of each soil with two decimal.

### Capability Legend

Increased Limitations and Hazards  
Decreased Adaptability and Freedom of Choice Users

Land, Capability

	1	2	3	4	5	6	7	8
'Wild Life'	•	•	•	•	•	•	•	•
Forestry	•	•	•	•	•	•	•	
Limited	•	•	•	•	•	•	•	
Moderate	•	•	•	•	•	•		
Intense	•	•	•	•	•			
Limited	•	•	•	•				
Moderate	•	•	•					
Intense	•	•						
Very Intense	•							

**Grazing Cultivation**

(c) climatic limitations (e) susceptibility to erosion  
(s) soil limitations within the rooting zone (w) excess of water