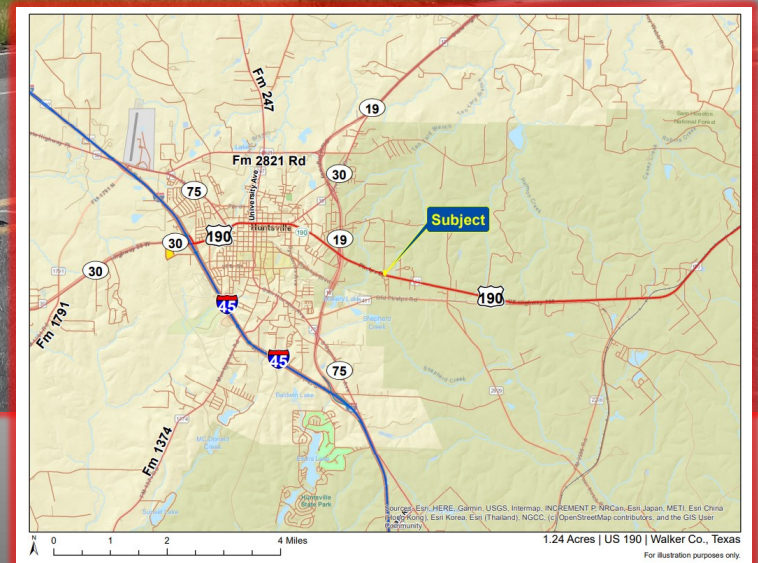




PROPERTY FEATURES

- Seller Financing! The seller's preference is owner financing
- Excellent location in the path of progress with good visibility on US 190 (11,729 AADT) at the entrance to Huntsville.
- This site's zoning makes it a prime candidate for Retail, Industrial, or Office development.
- This property's location has paved frontage on US 190 & Geneva Rd.
- 12" water line on Geneva Rd. & electricity onsite
- Do not miss this opportunity. Contact us today!



DISCLAIMER: The information contained herein has been obtained from sources that we deem reliable. Homeland Properties, Inc. makes no guarantees or representations to the completeness or accuracy of the data. Property information can be subject to change and/or omissions. The property owner reserves the right to sell/withdraw this listing or change the price at anytime without notice during the marketing period.

FOR MORE INFORMATION CONTACT:

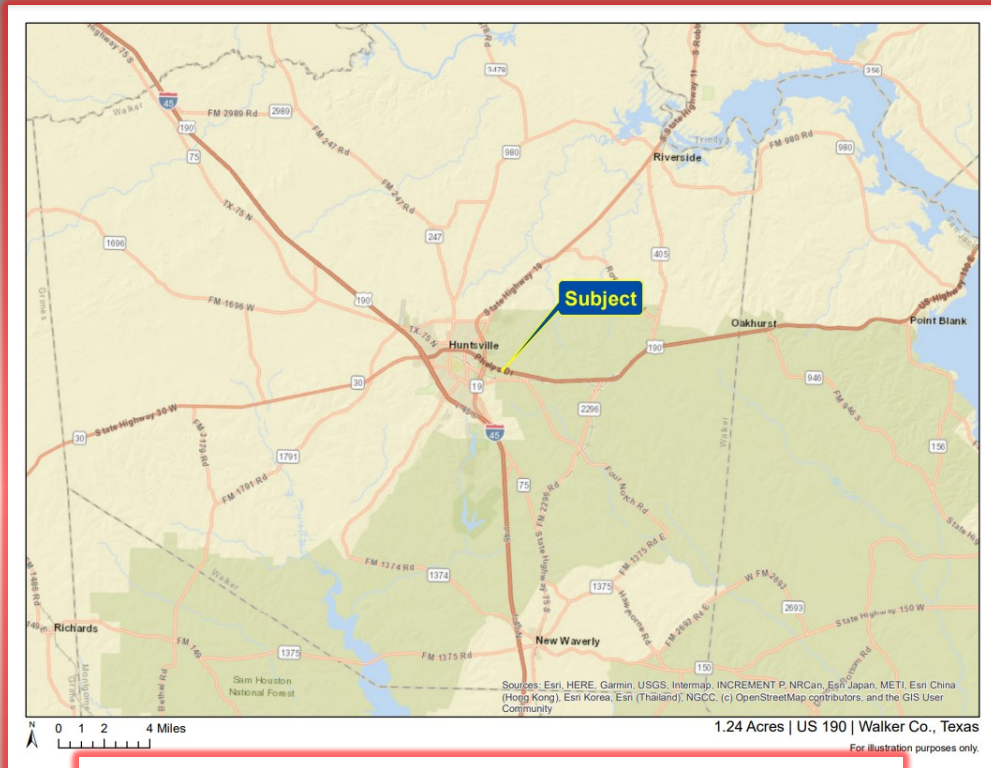
JC Hearn CCIM, ALC, RENE Homeland Properties
936-581-4049 / jchearn@homelandprop.com



DISCLAIMER: The information contained herein has been obtained from sources that we deem reliable. Homeland Properties, Inc. makes no guarantees or representations to the completeness or accuracy of the data. Property information can be subject to change and/or omissions. The property owner reserves the right to sell/withdraw this listing or change the price at anytime without notice during the marketing period.

FOR MORE INFORMATION CONTACT:
JC Hearn CCIM, ALC, RENE Homeland Properties
936-581-4049 / jchearn@homelandprop.com

11111



Level Topography and Ready to Build.

Water & Electricity in Proximity



**2 Minutes from Hwy 19, 6 Minutes from I45
provides fast and easy access.**

11111

DISCLAIMER: The information contained herein has been obtained from sources that we deem reliable. Homeland Properties, Inc. makes no guarantees or representations to the completeness or accuracy of the data. Property information can be subject to change and/or omissions. The property owner reserves the right to sell/withdraw this listing or change the price at anytime without notice during the marketing period.

FOR MORE INFORMATION CONTACT:

JC Hearn CCIM, ALC, RENE Homeland Properties
936-581-4049 / jchearn@homelandprop.com

MARKET HIGHLIGHTS

Huntsville, Tx offers an excellent quality of life and is home to Sam Houston State University (one of the fastest-growing universities in the state). It also has other major employers such as TDCJ, Region 6 Educational Service Center, Walmart, Weatherford, and many others, making it an increasingly valuable investment market.

Sam Houston State University has a growing population of 21,000+ students which continues to increase the demand and spending in this location.