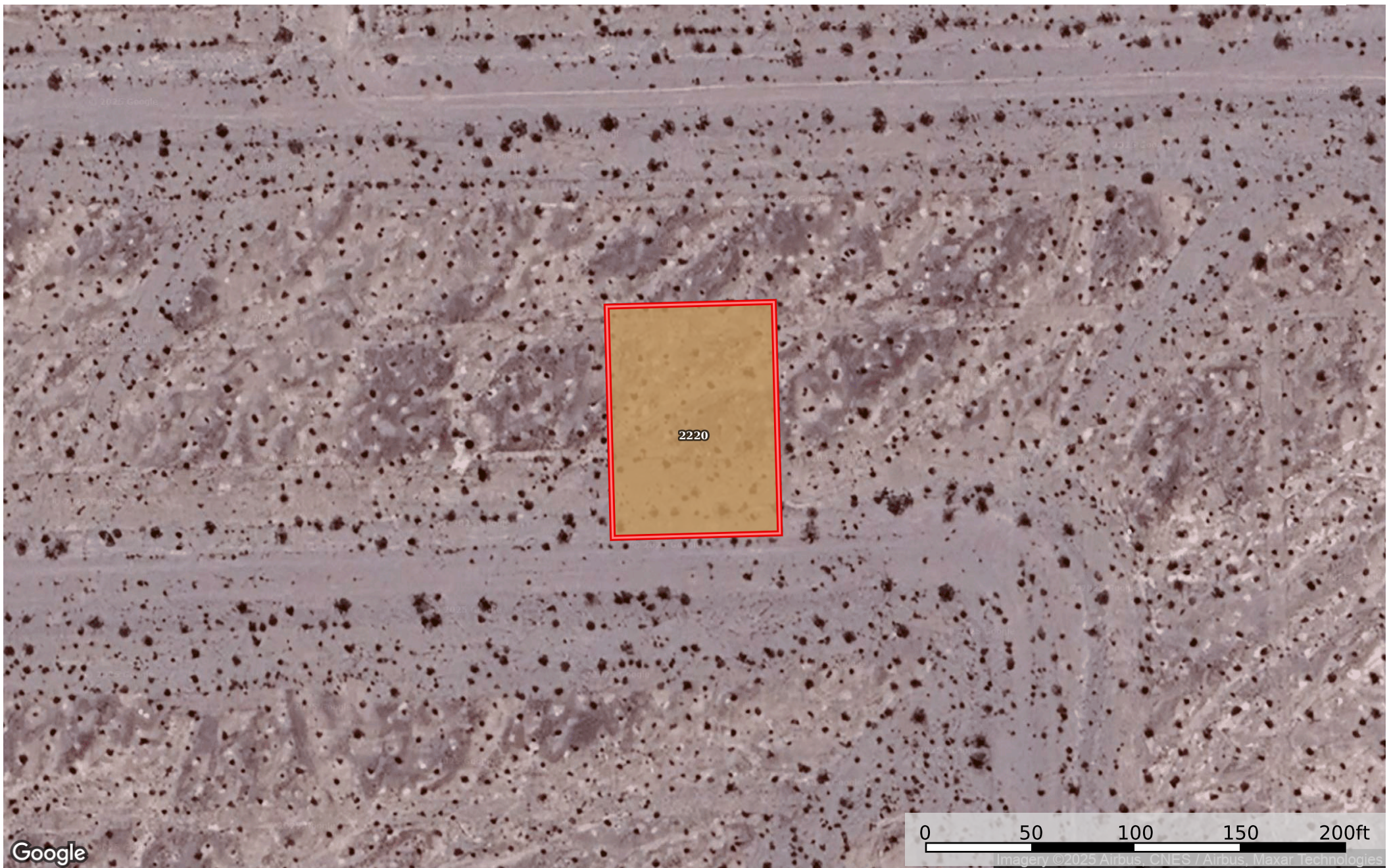


0.20 Acre Pahrump, Nye County, NV 030-063-27
Nye County, Nevada, 0.2 AC +/-





2220

0 50 100 150 200ft

Imagery ©2025 Airbus, CNES / Airbus, Maxar Technologies

Google

 Boundary

 The information contained herein was obtained from sources deemed to be reliable. Land id™ Services makes no warranties or guarantees as to the completeness or accuracy thereof.

Boundary 0.2 ac

SOIL CODE	SOIL DESCRIPTION	ACRES	%	CPI	NCCPI	CAP
2220	Canoto-Arizo complex, 2 to 4 percent slopes	0.2	100	0	3	7s
TOTALS		0.2(*)	100%	-	3.0	7

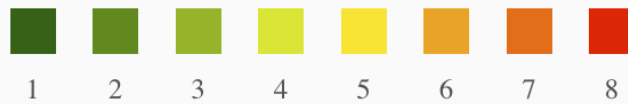
(*) Total acres may differ in the second decimal compared to the sum of each acreage soil. This is due to a round error because we only show the acres of each soil with two decimal.

Capability Legend

Increased Limitations and Hazards

Decreased Adaptability and Freedom of Choice Users

Land, Capability



'Wild Life'	•	•	•	•	•	•	•	•
Forestry	•	•	•	•	•	•	•	
Limited	•	•	•	•	•	•	•	
Moderate	•	•	•	•	•	•		
Intense	•	•	•	•	•			
Limited	•	•	•	•				
Moderate	•	•	•					
Intense	•	•						
Very Intense	•							

Grazing Cultivation

(c) climatic limitations (e) susceptibility to erosion
 (s) soil limitations within the rooting zone (w) excess of water