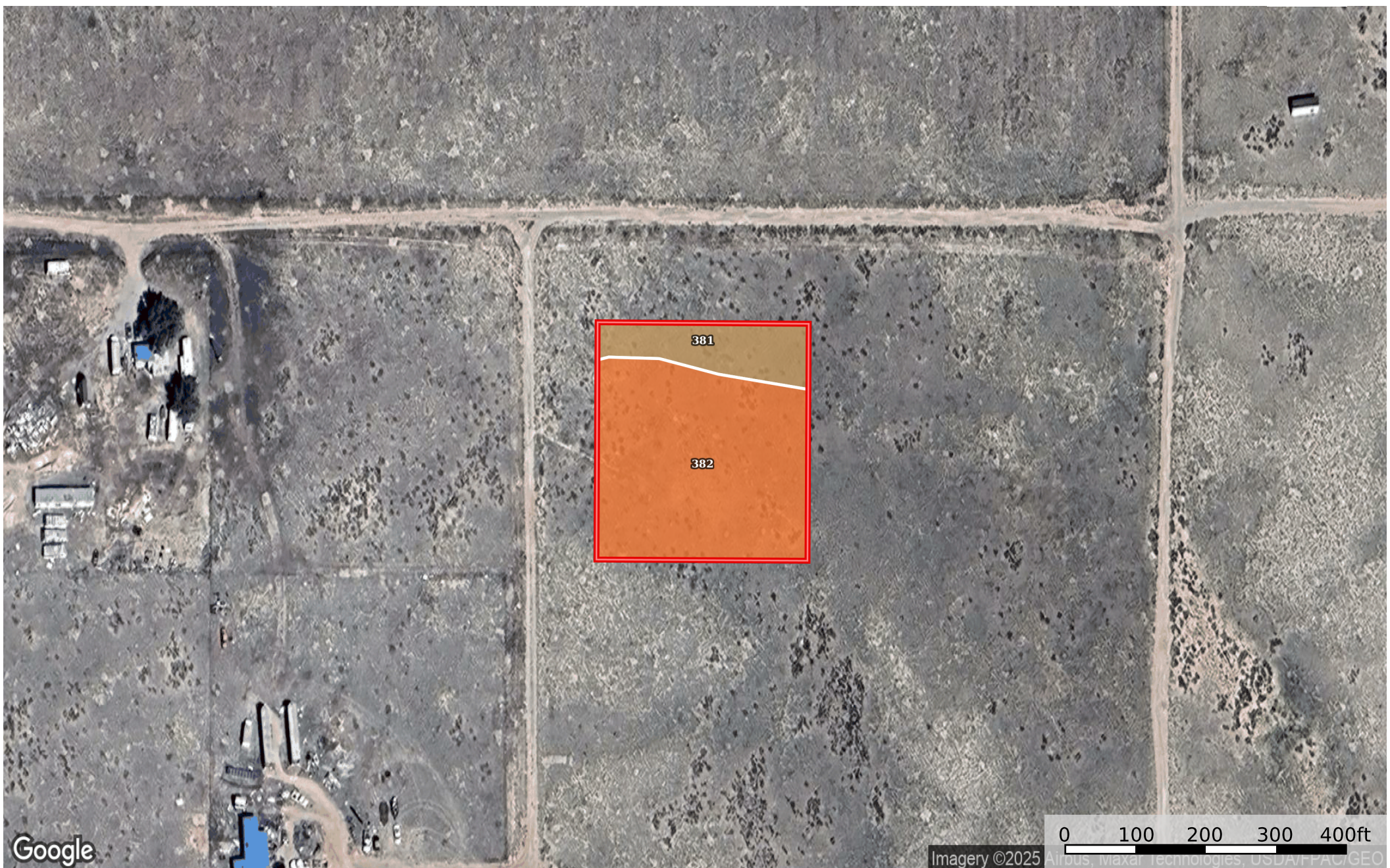



1.86 Acres Beryl, Iron County, UT E-1712-0009-0000  
Iron County, Utah, 1.86 AC +/-



Google

Imagery ©2025 Airbus, Maxar Technologies, USDA/FAC/GEO

 Boundary

 The information contained herein was obtained from sources deemed to be reliable. Land id™ Services makes no warranties or guarantees as to the completeness or accuracy thereof.

 Boundary 1.95 ac

SOIL CODE	SOIL DESCRIPTION	ACRES	%	CPI	NCCPI	CAP
382	Garbo-Biblesprings complex, 2 to 5 percent slopes	1.56	80	0	12	7e
381	Garbo gravelly sandy loam, 2 to 5 percent slopes	0.39	20	0	12	7e
TOTALS		1.95(*)	100%	-	12.0	6

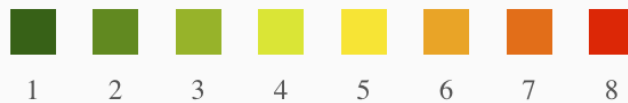
(\*) Total acres may differ in the second decimal compared to the sum of each acreage soil. This is due to a round error because we only show the acres of each soil with two decimal.

### Capability Legend

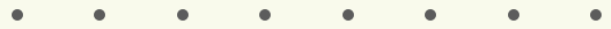
Increased Limitations and Hazards

Decreased Adaptability and Freedom of Choice Users

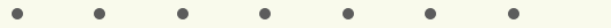
Land, Capability



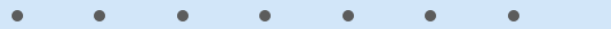
'Wild Life'



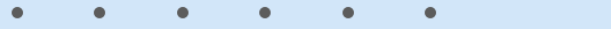
Forestry



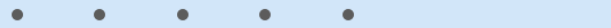
Limited



Moderate



Intense



Limited



Moderate



Intense



Very Intense



### Grazing Cultivation

(c) climatic limitations (e) susceptibility to erosion

(s) soil limitations within the rooting zone (w) excess of water