

GREATER KINGMAN INDUSTRIAL PARK

UNIT 3

BOOK 313  
MAP 20

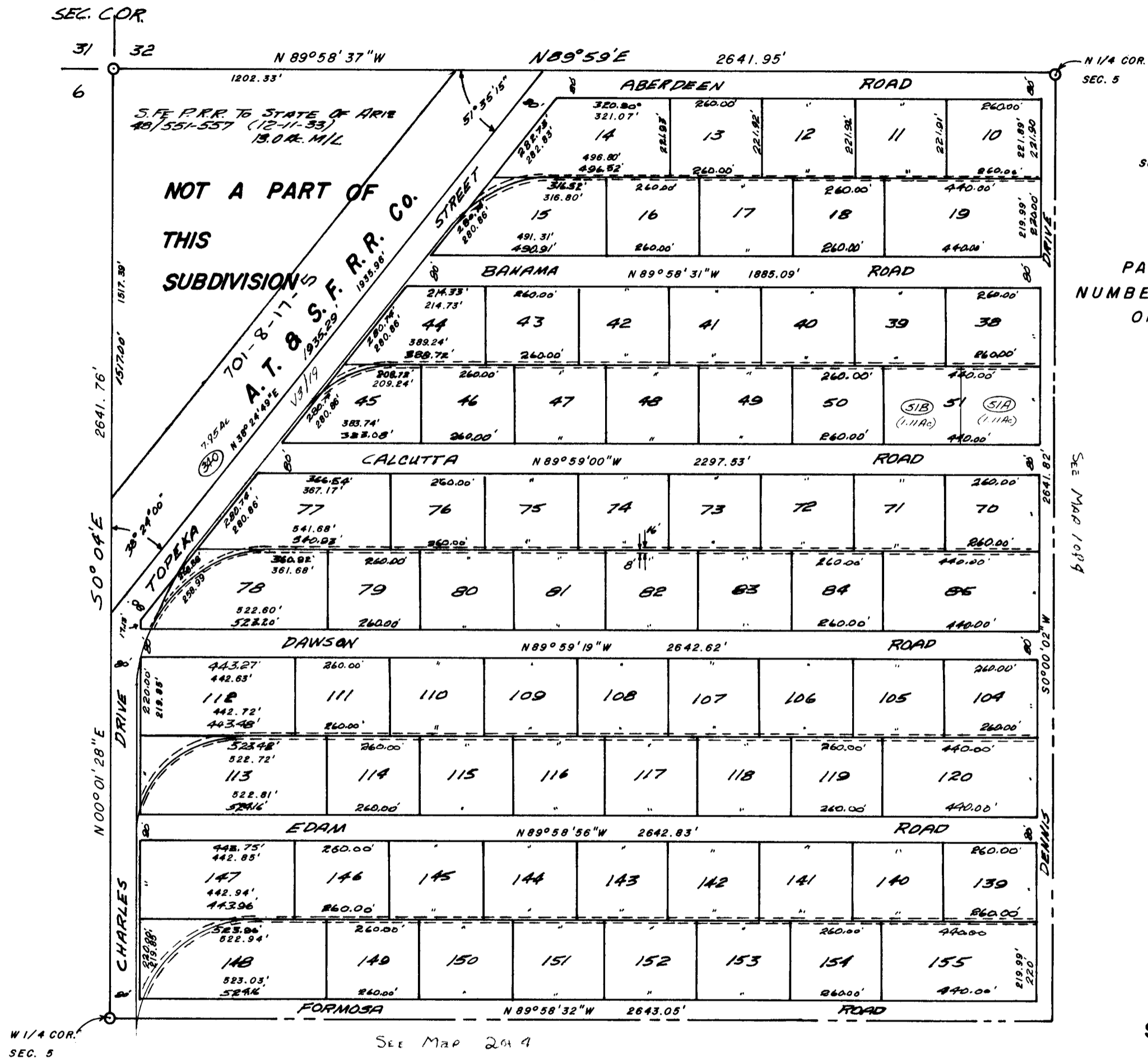
MAP 6

2 of 4  
CODE 0406

SURVEY ID NR 1732

NOTE  
PARCEL AND LOT  
NUMBERS ARE THE SAME  
ON THIS MAP

BOOK 313  
MAP 02



See Map 2049

22N-15W-5NW  
Date SEPT 14, 1994

MOHAVE  
COUNTY ASSESSOR'S MAP