

# Warehouse For Sale

Renaissance Park – Formerly Central State Hospital Campus  
205 Maintenance Road, Milledgeville, GA 31061



Summary

Area Info

Photos

Aerial

Site Map



## CONTACT

**Patty Burns, CCIM, ALC**  
478-746-9421 Office  
478-951-5100 Cell  
[patty@fickling.com](mailto:patty@fickling.com)

**Trip Wilhoit, CCIM, ALC**  
478-746-9421 Office  
478-960-4080 Cell  
[trip@fickling.com](mailto:trip@fickling.com)



577 Mulberry St, Suite 1100  
Macon, GA 31201  
478.746.9421 Office  
<https://commercial.fickling.com>

**PROPERTY INFORMATION**

**BUILDING**

**Property Address:** 205 Maintenance Road  
Milledgeville, GA 31061

**County:** Baldwin

**City Taxes:** \$2,260.37 (2024 est.)

**Year Built:** 1960

**Frontage:** Bostick Road - 990'  
Laboratory Road - 450'

**Total Size:** Building 1 - 10,000 SF  
Building 2 - 3,600 SF  
Building 3 - 3,000 SF

**Utilities:** All available

**Parking:** Ample, paved

**SITE**

**Site Size:** 8.91± Acres

**Parcel ID:** 072 001K

**Zoning:** Institutional

**SALE PRICE: \$135,000**

Demographics 2024	1 Mile	3 Miles	5 Miles
Population	6,842	42,120	79,073
Avg HH Income	\$51,957	\$70,232	\$84,280
Median Age	32.0	33.5	35.2

**CONTACT**

**Patty Burns, CCIM, ALC**  
 478-746-9421 Office  
 478-951-5100 Cell  
 patty@fickling.com

**Trip Wilhoit, CCIM, ALC**  
 478-746-9421 Office  
 478-960-4080 Cell  
 trip@fickling.com



577 Mulberry St, Suite 1100  
 Macon, GA 31201  
 478.746.9421 Office  
<https://commercial.fickling.com>

# Warehouse For Sale

## Renaissance Park – Formerly Central State Hospital Campus

205 Maintenance Road, Milledgeville, GA 31061



Summary

Area Info

Photos

Aerial

Site Map

## PROPERTY INFORMATION

### NOTES

Property is an 8.91 Acre lot with 3 buildings on site - 10,000 SF, 3,600 SF, and 3,000 SF. Ideal location for warehouse, storage, and service contractors such as electrical, HVAC, mechanical, or plumbing.



### LOCATION

Located in Renaissance Park, which is formerly known as Central State Park Hospital Campus. Central State was once the state's largest facility for treatment or mental illness and development disabilities. In the 1960s the facility was acknowledged as the biggest in the world, encompassing 8,000 acres. Currently Central State complex encompasses closer to 1,750 acres.

Surrounding neighbors on the campus include The Depot Museum, Georgia Military College Auditorium, Lawrence Building Warehouses, and The Dorms and Apartments (currently under renovation). Subject property is convenient to Downtown Milledgeville, I-75, I-16, I-20, and the Fall Line Freeway. Other surrounding neighbors include Georgia College & State University, Veterans Medical Facility, and War Veterans Home.

### CONTACT

**Patty Burns, CCIM, ALC**  
478-746-9421 Office  
478-951-5100 Cell  
patty@fickling.com

**Trip Wilhoit, CCIM, ALC**  
478-746-9421 Office  
478-960-4080 Cell  
trip@fickling.com



577 Mulberry St, Suite 1100  
Macon, GA 31201  
478.746.9421 Office  
<https://commercial.fickling.com>

# Warehouse For Sale

## Renaissance Park – Formerly Central State Hospital Campus

205 Maintenance Road, Milledgeville, GA 31061



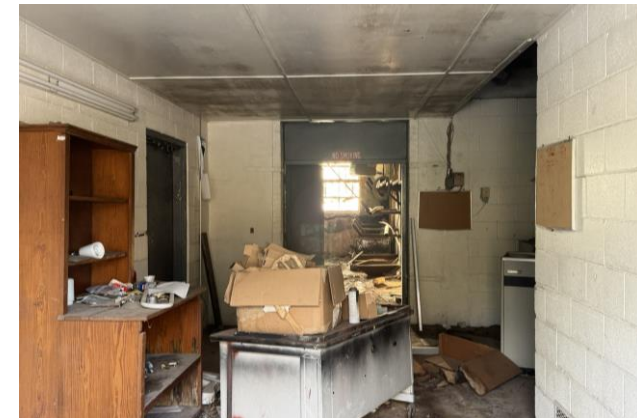
Summary

Area Info

Photos

Aerial

Site Map



### CONTACT

**Patty Burns, CCIM, ALC**  
478-746-9421 Office  
478-951-5100 Cell  
[patty@fickling.com](mailto:patty@fickling.com)

**Trip Wilhoit, CCIM, ALC**  
478-746-9421 Office  
478-960-4080 Cell  
[trip@fickling.com](mailto:trip@fickling.com)

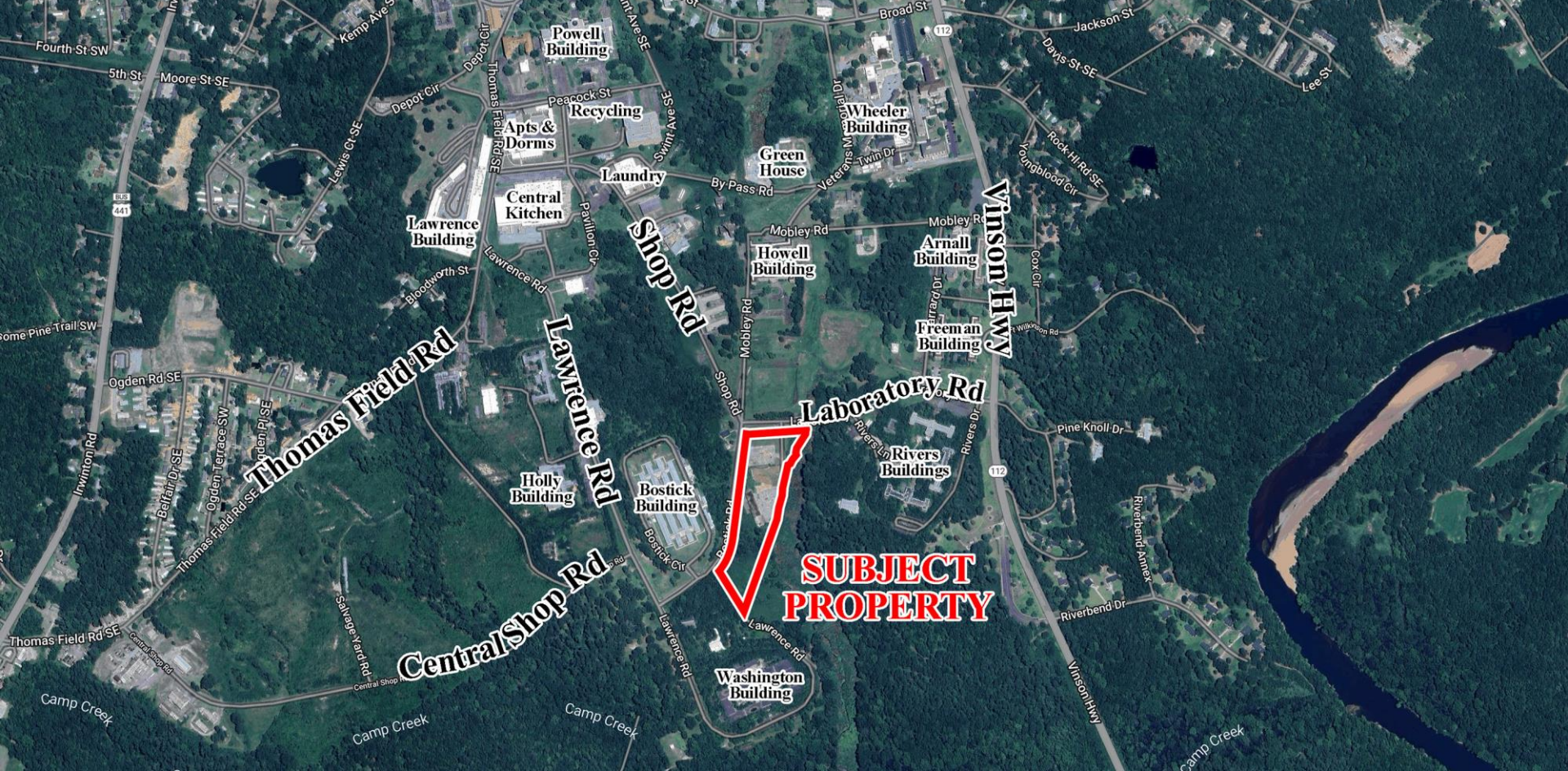


577 Mulberry St, Suite 1100  
Macon, GA 31201  
478.746.9421 Office  
<https://commercial.fickling.com>

**Warehouse For Sale**  
**Renaissance Park – Formerly Central State Hospital Campus**  
**205 Maintenance Road, Milledgeville, GA 31061**



- Summary
- Area Info
- Photos
- Aerial
- Site Map



**CONTACT**

**Patty Burns, CCIM, ALC**  
 478-746-9421 Office  
 478-951-5100 Cell  
 patty@fickling.com

**Trip Wilhoit, CCIM, ALC**  
 478-746-9421 Office  
 478-960-4080 Cell  
 trip@fickling.com



577 Mulberry St, Suite 1100  
 Macon, GA 31201  
 478.746.9421 Office  
<https://commercial.fickling.com>

This information is from resources deemed to be reliable and is subject to change without notice. No warranties or guarantees for accuracy are made by Fickling and Company.

# Warehouse For Sale

## Renaissance Park – Formerly Central State Hospital Campus

205 Maintenance Road, Milledgeville, GA 31061



Summary

Area Info

Photos

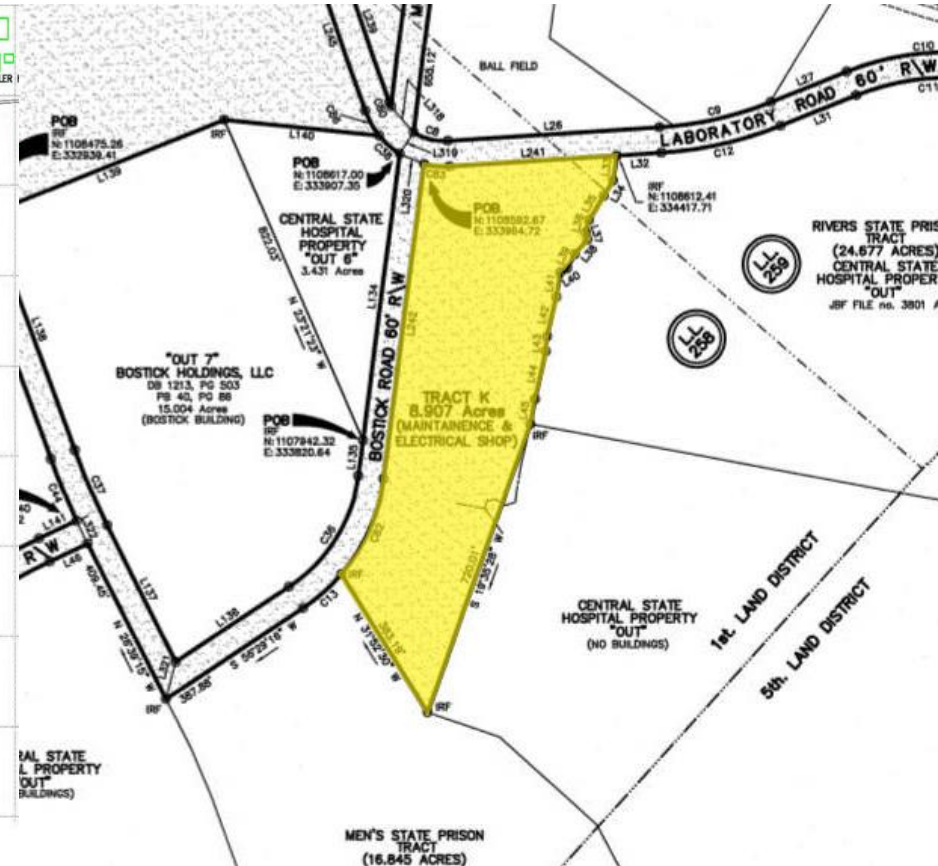
Aerial

Site Map

### RENAISSANCE PARK SITE MAP



### PLAT MAP



#### CONTACT

**Patty Burns, CCIM, ALC**  
 478-746-9421 Office  
 478-951-5100 Cell  
 patty@fickling.com

**Trip Wilhoit, CCIM, ALC**  
 478-746-9421 Office  
 478-960-4080 Cell  
 trip@fickling.com



577 Mulberry St, Suite 1100  
 Macon, GA 31201  
 478.746.9421 Office  
<https://commercial.fickling.com>