



Fischbach
LAND COMPANY

**LITHIA
ACREAGE
HOMESITES**

1.27± - 7± ACRES

Property Overview

LITHIA ACREAGE HOMESITES! Available as a whole or individually, this rare offering is perfect if you're looking for the ideal setting for your custom home or a small family compound to accommodate 3 homes! These homesites offer wide open views and are framed nicely by a few scattered oaks. Choose your perfect homesite with ample space for your ideal country retreat. Tucked away off CR672 on a small, newly paved road you'll enjoy the serenity of country living while being only 15 minutes from town. Only 3 miles from Alafia River State Park there are ample opportunities for hiking, horseback riding and biking. Sitting at an elevation of 120' you'll have clear views and no fear of flooding! Don't miss your chance to own a piece of peaceful countryside!



www.FischbachLandCompany.com/LithiaAcreageHomesites

Property Highlights



No Flood Zone



Private and Secluded Homesites



Close to State Parks



Property Address	17744 Bledsoe Loop, Lithia, FL 33547	Future Land Use	AR
Property Type	Acreage Homesites	Price	\$725,000
Size	1.27± - 7± Acres	County	Hillsborough
Zoning	AR	STR	25-31-21

Photos



LOT 1

Acreage:

1.38± Acres

Property Improvements:

Well and Electric

Price:

\$210,000



LOT 2

Acreage: 1.27± Acres

Price: \$200,000

Photos



LOT 3

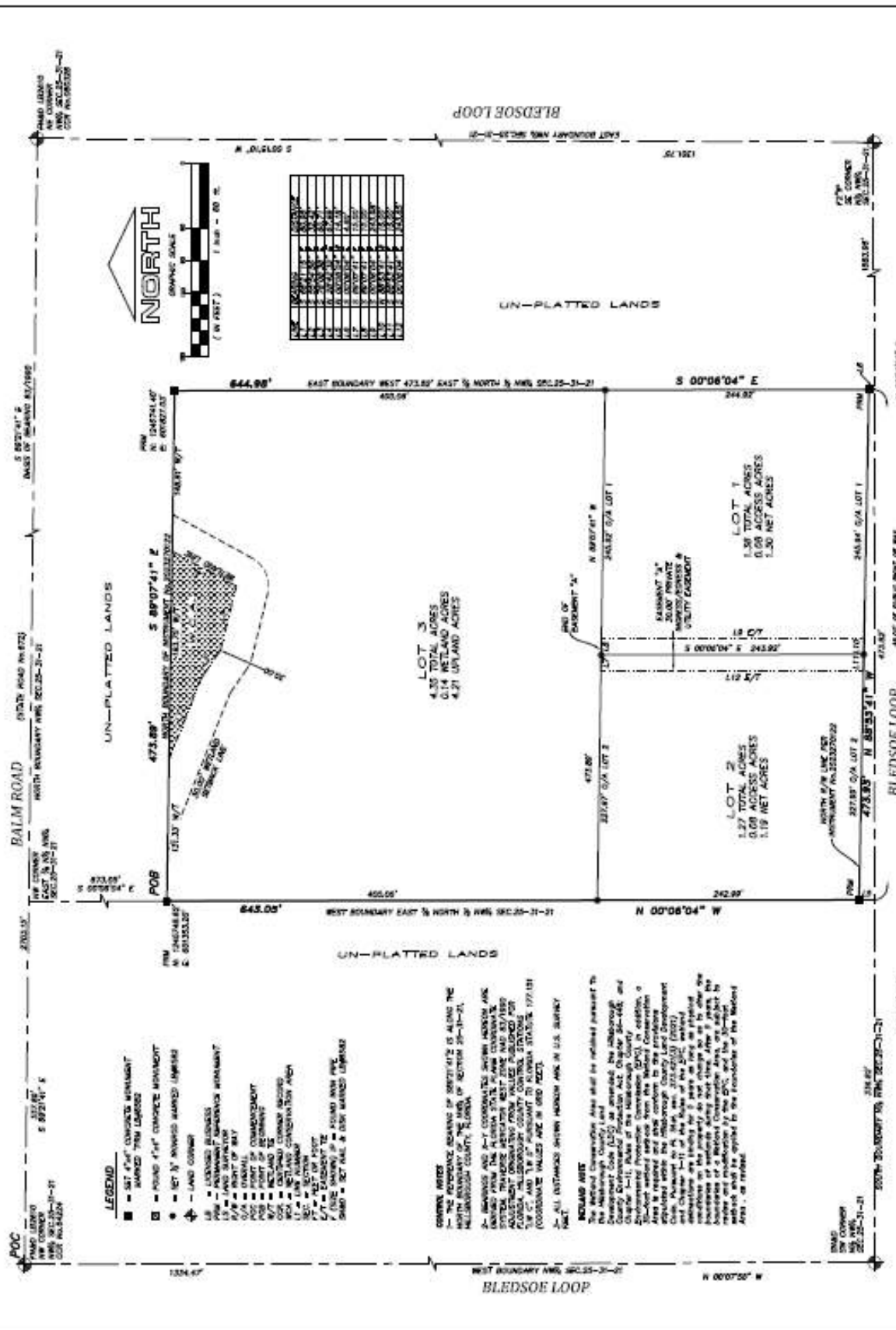
Acreage: 4.35± Acres

Price: \$325,000

BLEDSOE FAMILY ESTATES

PLAY BOOK PAGE

MINOR SUBDIVISION
IN THE NW 1/4 OF SECTION 25, TOWNSHIP 31 SOUTH, RANGE 31 EAST
HILLSBOROUGH COUNTY, FLORIDA



HILLSBOROUGH SURVEYING INC.
 Licensed Business No. 6500
 10000 Hillsborough Blvd., Suite 100
 Hillsborough, Florida 33617
 Phone (813) 752-8888 (FAX) 813 713-8017

Fischbach **LAND COMPANY**

FISCHBACH LAND COMPANY

917 S PARSONS AVENUE, BRANDON, FL 33511

PHONE: 813-540-1000



REED FISCHBACH | Broker
reed@fischbachlandcompany.com



MELISSA RABURN | Agent
melissa@fischbachlandcompany.com